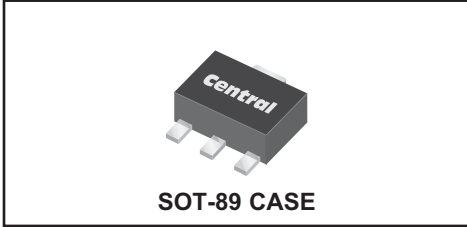


CXSH-4
SURFACE MOUNT
SILICON SCHOTTKY RECTIFIER



www.centrasemi.com

DESCRIPTION:

The CENTRAL SEMICONDUCTOR CXSH-4 type is a Schottky barrier rectifier mounted in an epoxy molded case using a metal to silicon junction to yield low forward voltage drop. This device utilizes a single chip with anode connections made to PIN 1 and PIN 3.

MARKING: FULL PART NUMBER

MAXIMUM RATINGS: ($T_A=25^\circ\text{C}$)

Peak Repetitive Reverse Voltage	V_{RRM}	40	V
DC Blocking Voltage	V_R	40	V
RMS Reverse Voltage	$V_R(\text{RMS})$	28	V
Average Forward Current	I_O	1.0	A
Peak Forward Surge Current, $t_p=8.3\text{ms}$	I_{FSM}	10	A
Operating and Storage Junction Temperature	T_J, T_{stg}	-65 to +150	$^\circ\text{C}$

SYMBOL

UNITS

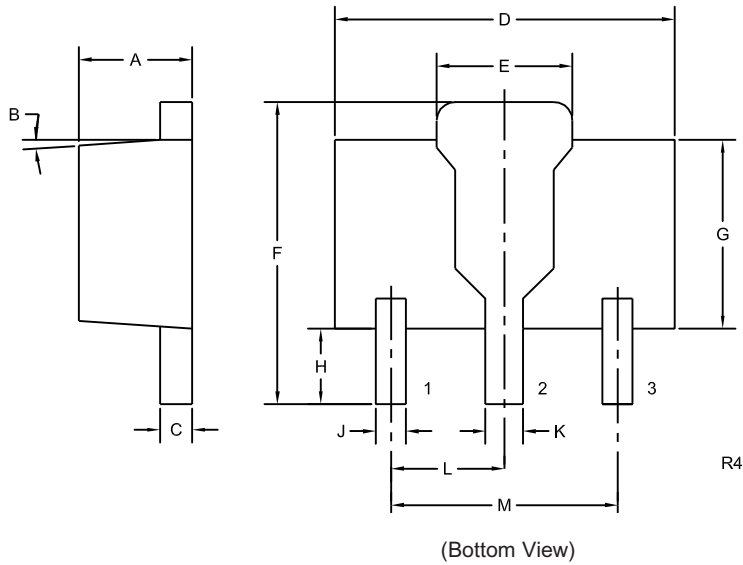
ELECTRICAL CHARACTERISTICS: ($T_A=25^\circ\text{C}$ unless otherwise noted)

SYMBOL	TEST CONDITIONS	MAX	UNITS
I_R	$V_R=40\text{V}$	1.0	mA
I_R	$V_R=40\text{V}, T_A=100^\circ\text{C}$	10	mA
V_F	$I_F=1.0\text{A}$	0.55	V

CXSH-4
SURFACE MOUNT
SILICON SCHOTTKY RECTIFIER



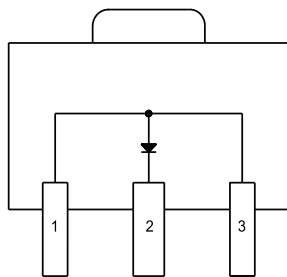
SOT-89 CASE - MECHANICAL OUTLINE



LEAD CODE:

- 1) Anode
- 2) Cathode
- 3) Anode

MARKING:
FULL PART NUMBER



Bottom View
(Tab not shown)

SYMBOL	INCHES		MILLIMETERS	
	MIN	MAX	MIN	MAX
A	0.055	0.067	1.40	1.70
B	4°		4°	
C	0.014	0.018	0.35	0.46
D	0.173	0.185	4.40	4.70
E	0.064	0.074	1.62	1.87
F	0.146	0.177	3.70	4.50
G	0.090	0.106	2.29	2.70
H	0.028	0.051	0.70	1.30
J	0.014	0.019	0.36	0.48
K	0.017	0.023	0.44	0.58
L	0.059		1.50	
M	0.118		3.00	

SOT-89 (REV: R4)

R7 (19-February 2010)