

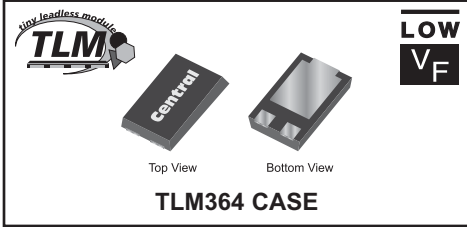
**CTLSH5-100M364**  
**SURFACE MOUNT**  
**LOW  $V_F$**   
**SILICON SCHOTTKY RECTIFIER**



[www.centrasemi.com](http://www.centrasemi.com)

**DESCRIPTION:**

The CENTRAL SEMICONDUCTOR CTLSH5-100M364 is a high performance 5 amp silicon Schottky rectifier designed for applications requiring high power capability and a low profile package.



**MARKING CODE: CTLSH510**

**APPLICATIONS:**

- DC - DC converters
- Reverse polarity protection
- By-pass diode

**FEATURES:**

- Low forward voltage,  $V_F=0.8V$  MAX @ 5.0A
- Low reverse leakage current,  $I_R=15\mu A$  MAX @ 100V
- Low profile 1.2mm MAX package height

**MAXIMUM RATINGS:** ( $T_A=25^\circ C$ )

Peak Repetitive Reverse Voltage  
DC Blocking Voltage  
RMS Reverse Voltage  
Average Forward Current ( $T_L=125^\circ C$ )  
Peak Forward Surge Current,  $t_p=8.3ms$   
Operating and Storage Junction Temperature  
Thermal Resistance  
Thermal Resistance

**SYMBOL**

SYMBOL		UNITS
$V_{RRM}$	100	V
$V_R$	100	V
$V_{R(RMS)}$	70	V
$I_O$	5.0	A
$I_{FSM}$	150	A
$T_J, T_{stg}$	-55 to +150	$^\circ C$
$\theta_{JA}$	80	$^\circ C/W$
$\theta_{JL}$	15	$^\circ C/W$

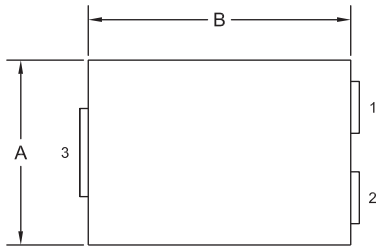
**ELECTRICAL CHARACTERISTICS:** ( $T_A=25^\circ C$  unless otherwise noted)

SYMBOL	TEST CONDITIONS	MIN	TYP	MAX	UNITS
$I_R$	$V_R=100V$		1.0	15	$\mu A$
$I_R$	$V_R=100V, T_A=100^\circ C$		0.15	10	mA
$BV_R$	$I_R=1.0mA$	100	112		V
$V_F$	$I_F=5.0A$		0.76	0.8	V
$C_J$	$V_R=0, f=1.0MHz$		475		pF

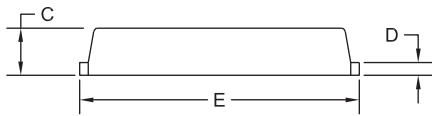
**CTLSH5-100M364**  
**SURFACE MOUNT**  
**LOW V<sub>F</sub>**  
**SILICON SCHOTTKY RECTIFIER**



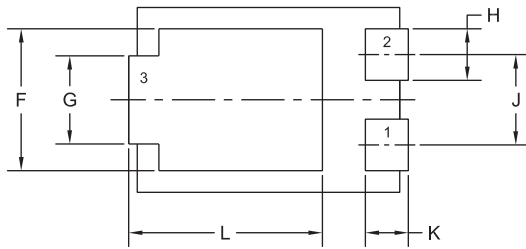
**TLM364 CASE - MECHANICAL OUTLINE**



TOP VIEW



SIDE VIEW

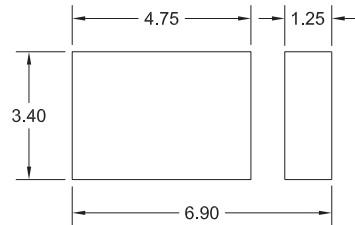


BOTTOM VIEW R0

SYMBOL	INCHES		MILLIMETERS	
	MIN	MAX	MIN	MAX
A	0.167	0.172	4.25	4.35
B	0.238	0.243	6.05	6.15
C	0.039	0.048	1.00	1.20
D	0.009	0.014	0.25	0.35
E	0.250	0.262	6.35	6.65
F	0.128	0.136	3.25	3.45
G	0.076	0.085	1.95	2.15
H	0.044	0.052	1.10	1.30
J	0.083		2.10	
K	0.035	0.044	0.90	1.10
L	0.171	0.183	4.35	4.65

TLM364 (REV:R0)

**SUGGESTED MOUNTING PADS**  
(Dimensions in mm)



R0

**LEAD CODE:**

- 1) Anode
- 2) Anode
- 3) Cathode

**MARKING CODE: CTLSH510**

R3 (16-January 2012)