

CTLSH15-30M364

SURFACE MOUNT SILICON  
LOW  $V_F$   
SCHOTTKY RECTIFIER

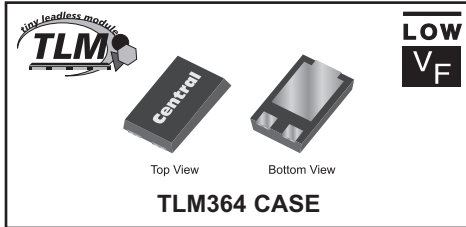


www.centrasemi.com

**DESCRIPTION:**

The CENTRAL SEMICONDUCTOR CTLSH15-30M364 is a high performance 15 Amp silicon Schottky rectifier designed for applications requiring high power capability and a low profile package.

**MARKING CODE: CTSH1530**



**APPLICATIONS:**

- DC-DC converters
- Reverse polarity protection
- By-pass diode

**FEATURES:**

- Low forward voltage,  $V_F=0.51V$  TYP @ 15A
- Low profile 1.2mm MAX package height

**MAXIMUM RATINGS:** ( $T_A=25^\circ C$ )

Peak Repetitive Reverse Voltage  
DC Blocking Voltage  
RMS Reverse Voltage  
Average Forward Current ( $T_L=120^\circ C$ )  
Peak Forward Surge Current,  $t_p=8.3ms$   
Operating and Storage Junction Temperature  
Thermal Resistance  
Thermal Resistance

| SYMBOL         |             | UNITS        |
|----------------|-------------|--------------|
| $V_{RRM}$      | 30          | V            |
| $V_R$          | 30          | V            |
| $V_{R(RMS)}$   | 21          | V            |
| $I_O$          | 15          | A            |
| $I_{FSM}$      | 275         | A            |
| $T_J, T_{stg}$ | -55 to +150 | $^\circ C$   |
| $\theta_{JA}$  | 110         | $^\circ C/W$ |
| $\theta_{JL}$  | 4.5         | $^\circ C/W$ |

**ELECTRICAL CHARACTERISTICS:** ( $T_A=25^\circ C$  unless otherwise noted)

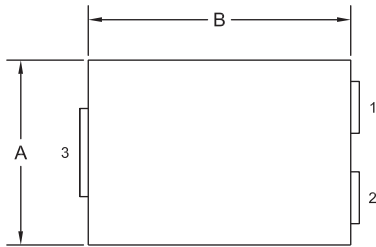
| SYMBOL | TEST CONDITIONS            | MIN | TYP  | MAX  | UNITS   |
|--------|----------------------------|-----|------|------|---------|
| $I_R$  | $V_R=30V$                  |     | 25   | 100  | $\mu A$ |
| $I_R$  | $V_R=30V, T_A=125^\circ C$ |     | 20   | 50   | mA      |
| $BV_R$ | $I_R=0.5mA$                | 30  |      |      | V       |
| $V_F$  | $I_F=15A$                  |     | 0.51 | 0.56 | V       |
| $C_J$  | $V_R=4.0V, f=1.0MHz$       |     | 920  |      | pF      |

R1 (25-March 2013)

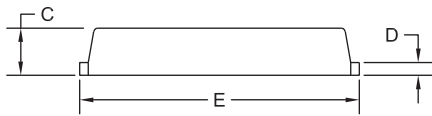
**CTLSH15-30M364**  
**SURFACE MOUNT SILICON**  
**LOW  $V_F$**   
**SCHOTTKY RECTIFIER**



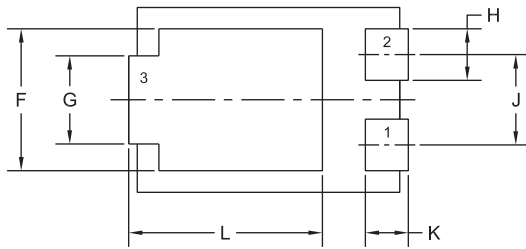
**TLM364 CASE - MECHANICAL OUTLINE**



TOP VIEW



SIDE VIEW

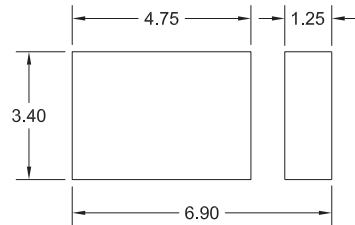


BOTTOM VIEW R0

| SYMBOL | INCHES |       | MILLIMETERS |      |
|--------|--------|-------|-------------|------|
|        | MIN    | MAX   | MIN         | MAX  |
| A      | 0.167  | 0.172 | 4.25        | 4.35 |
| B      | 0.238  | 0.243 | 6.05        | 6.15 |
| C      | 0.039  | 0.048 | 1.00        | 1.20 |
| D      | 0.009  | 0.014 | 0.25        | 0.35 |
| E      | 0.250  | 0.262 | 6.35        | 6.65 |
| F      | 0.128  | 0.136 | 3.25        | 3.45 |
| G      | 0.076  | 0.085 | 1.95        | 2.15 |
| H      | 0.044  | 0.052 | 1.10        | 1.30 |
| J      | 0.083  |       | 2.10        |      |
| K      | 0.035  | 0.044 | 0.90        | 1.10 |
| L      | 0.171  | 0.183 | 4.35        | 4.65 |

TLM364 (REV:R0)

**SUGGESTED MOUNTING PADS**  
(Dimensions in mm)



R0

**LEAD CODE:**

- 1) Anode
- 2) Anode
- 3) Cathode

**MARKING CODE: CTSH1530**

R1 (25-March 2013)

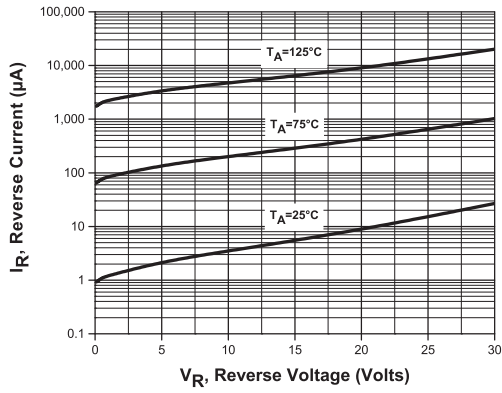
CTLSH15-30M364

SURFACE MOUNT SILICON  
LOW  $V_F$   
SCHOTTKY RECTIFIER

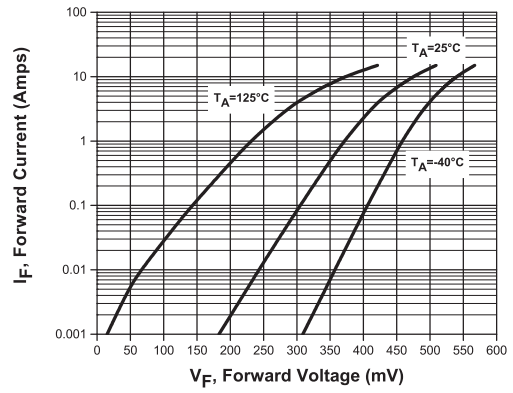


TYPICAL ELECTRICAL CHARACTERISTICS

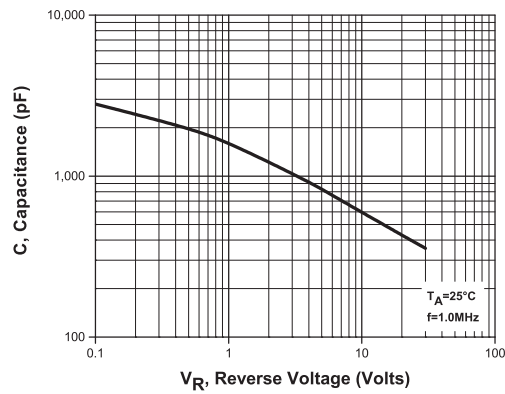
Leakage Current



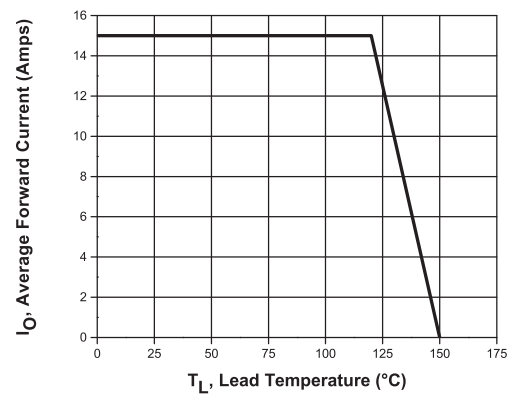
Forward Voltage



Capacitance



Current Derating



R1 (25-March 2013)