

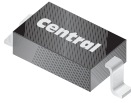
CMDSH2-4L

SURFACE MOUNT  
HIGH CURRENT, LOW  $V_F$   
SILICON SCHOTTKY DIODE



www.centrasemi.com

**SUPER**mini™



SOD-323 CASE

**DESCRIPTION:**

The CENTRAL SEMICONDUCTOR CMDSH2-4L is a HIGH CURRENT, LOW  $V_F$  40 volt Schottky diode packaged in a space saving SOD-323 surface mount case. This **SUPER**mini™ device has been designed for small signal general purpose applications when small size and operational efficiency are prime requirements.

**MARKING CODE: S2L**

**MAXIMUM RATINGS:** ( $T_A=25^\circ\text{C}$ )

Peak Repetitive Reverse Voltage  
Continuous Forward Current  
Peak Forward Surge Current,  $t_p=1.0\text{ms}$   
Power Dissipation  
Operating and Storage Junction Temperature  
Thermal Resistance

**SYMBOL**

$V_{RRM}$  40  
 $I_F$  200  
 $I_{FSM}$  1.0  
 $P_D$  250  
 $T_J, T_{stg}$  -65 to +150  
 $\theta_{JA}$  500

**UNITS**

V  
mA  
A  
mW  
 $^\circ\text{C}$   
 $^\circ\text{C/W}$

**ELECTRICAL CHARACTERISTICS:** ( $T_A=25^\circ\text{C}$  unless otherwise noted)

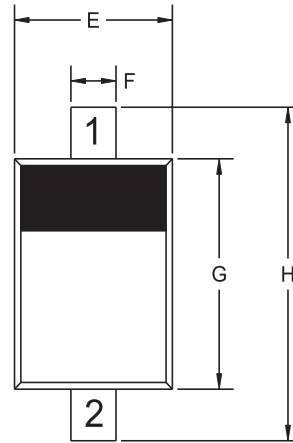
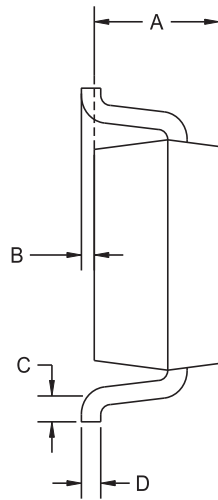
SYMBOL	TEST CONDITIONS	MIN	TYP	MAX	UNITS
$I_R$	$V_R=20\text{V}$		11	50	$\mu\text{A}$
$BV_R$	$I_R=100\mu\text{A}$	40	53		V
$V_F$	$I_F=10\text{mA}$		0.24	0.325	V
$V_F$	$I_F=100\text{mA}$		0.35	0.4	V
$V_F$	$I_F=200\text{mA}$		0.42	0.5	V
$C_T$	$V_R=4.0\text{V}, f=1.0\text{MHz}$		8.5	10	pF
$t_{rr}$	$I_F=I_R=10\text{mA}, I_{rr}=1.0\text{mA}, R_L=100\Omega$		4.0	5.0	ns

CMDSH2-4L

SURFACE MOUNT  
HIGH CURRENT, LOW  $V_F$   
SILICON SCHOTTKY DIODE



SOD-323 CASE - MECHANICAL OUTLINE



R4

LEAD CODE:

- 1) CATHODE
- 2) ANODE

MARKING CODE: S2L

SYMBOL	INCHES		MILLIMETERS	
	MIN	MAX	MIN	MAX
A	0.031	0.039	0.80	1.00
B	0.000	0.004	0.00	0.10
C	0.008	-	0.20	-
D	0.004	0.007	0.11	0.19
E	0.045	0.053	1.15	1.35
F	-	0.014	-	0.35
G	0.063	0.071	1.60	1.80
H	0.094	0.102	2.40	2.60

SOD-323 (REV: R4)

R2 (8-January 2010)