

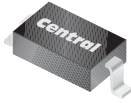
CMDD6263

**SURFACE MOUNT  
HIGH VOLTAGE SILICON  
SCHOTTKY DIODE**



[www.centrasemi.com](http://www.centrasemi.com)

**SUPERmini™**



**SOD-323 CASE**

**DESCRIPTION:**

The CENTRAL SEMICONDUCTOR CMDD6263 is a High Voltage, low  $V_F$ , Silicon Schottky diode in a **SUPERmini™** surface mount package, designed for fast switching applications requiring low forward voltage drop.

**FEATURES:**

- High Voltage (70V)
- Low Forward Voltage
- Part of Central's Space Saving **SUPERmini™** Surface Mount Package Family

**MARKING CODE: D63**

**MAXIMUM RATINGS: ( $T_A=25^\circ\text{C}$ )**

Peak Repetitive Reverse Voltage  
Continuous Forward Current  
Peak Forward Surge Current,  $t_p=1.0\text{s}$   
Power Dissipation  
Operating and Storage Junction Temperature  
Thermal Resistance

**SYMBOL**

$V_{RRM}$  70  
 $I_F$  15  
 $I_{FSM}$  50  
 $P_D$  250  
 $T_J, T_{stg}$  -65 to +150  
 $\theta_{JA}$  500

**UNITS**

V  
mA  
mA  
mW  
 $^\circ\text{C}$   
 $^\circ\text{C}/\text{W}$

**ELECTRICAL CHARACTERISTICS: ( $T_A=25^\circ\text{C}$ )**

SYMBOL	TEST CONDITIONS	MIN	TYP	MAX	UNITS
$I_R$	$V_R=50\text{V}$		98	200	nA
$BV_R$	$I_R=10\mu\text{A}$	70			V
$V_F$	$I_F=1.0\text{mA}$		395	410	mV
$C_T$	$V_R=0, f=1.0\text{MHz}$			2.0	pF
$t_{rr}$	$I_R=I_F=10\text{mA}, I_{rr}=1.0\text{mA}, R_L=100\Omega$			5.0	ns

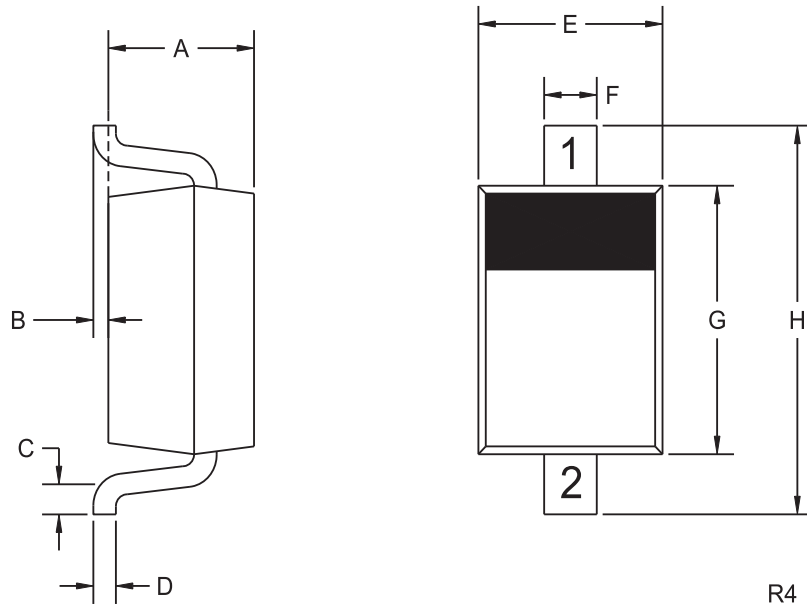
R3 (8-January 2010)

CMDD6263

SURFACE MOUNT  
HIGH VOLTAGE SILICON  
SCHOTTKY DIODE



SOD-323 CASE - MECHANICAL OUTLINE



LEAD CODE:

- 1) CATHODE
- 2) ANODE

MARKING CODE: D63

DIMENSIONS				
SYMBOL	INCHES		MILLIMETERS	
	MIN	MAX	MIN	MAX
A	0.031	0.039	0.80	1.00
B	0.000	0.004	0.00	0.10
C	0.008	-	0.20	-
D	0.004	0.007	0.11	0.19
E	0.045	0.053	1.15	1.35
F	-	0.014	-	0.35
G	0.063	0.071	1.60	1.80
H	0.094	0.102	2.40	2.60

SOD-323 (REV: R4)

R3 (8-January 2010)