

Ratings AND Characteristic Curves

FIG.1 – TYPICAL FORWARD CHARACTERISTIC

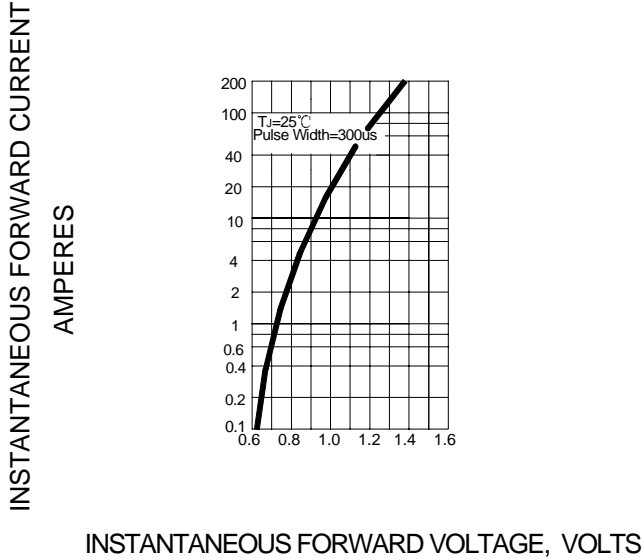


FIG.2- FORWARD DERATING CURVE

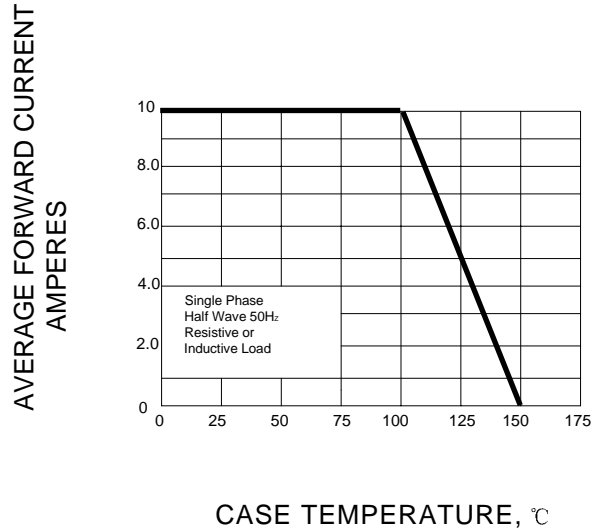


FIG.3- PEAK FORWARD SURGE CURRENT

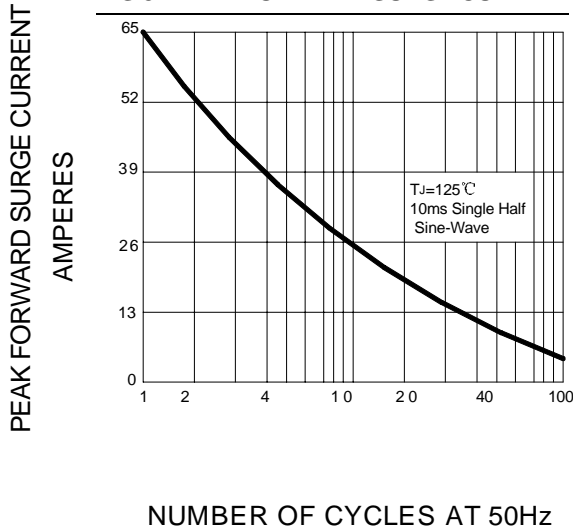


FIG.4 – TYPICAL REVERSE CHARACTERISTICS

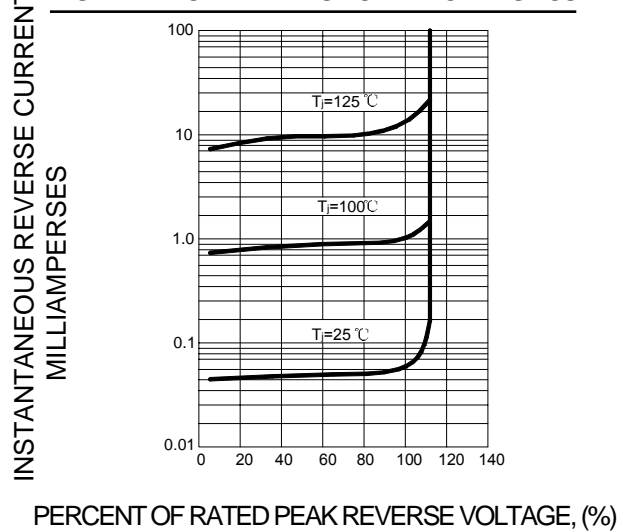
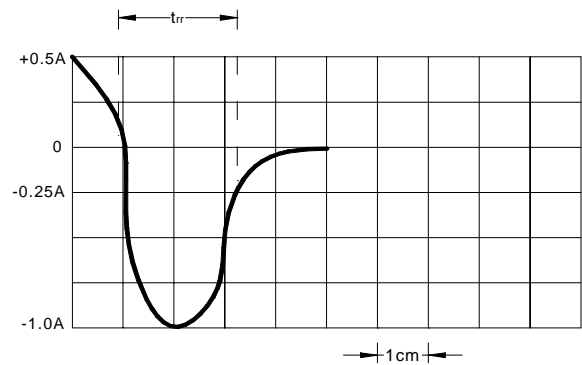
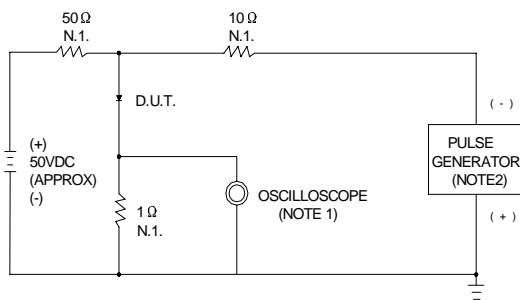


FIG.5 – REVERSE RECOVERY TIME CHARACTERISTIC AND TEST CIRCUIT DIAGRAM



NOTES: 1. RISE TIME=7ns MAX. INPUT IMPEDANCE=1MΩ, 22pF
2. RISE TIME=10ns MAX. SOURCE IMPEDANCE=50