

TVR2B-TVR2J

Fast Recovery Rectifiers

VOLTAGE RANGE: 100 --- 600 V

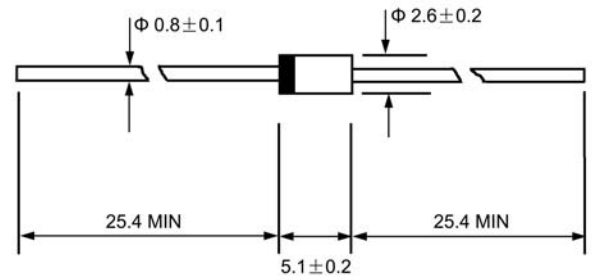
CURRENT: 0.5 A



Features

- ◇ Low cost
- ◇ Diffused junction
- ◇ Low leakage
- ◇ Low forward voltage drop
- ◇ High current capability
- ◇ Easily cleaned with Freon, Alcohol, Isopropanol and similar solvents
- ◇ The plastic material carries U/L recognition 94V-0

DO - 41



Dimensions in millimeters

Mechanical Data

- ◇ Case: JEDEC DO-41, molded plastic
- ◇ Polarity: Color band denotes cathode
- ◇ Weight: 0.012 ounces, 0.34 grams
- ◇ Mounting position: Any

MAXIMUM RATINGS AND ELECTRICAL CHARACTERISTICS

Ratings at 25°C ambient temperature unless otherwise specified.

Single phase, half wave, 60 Hz, resistive or inductive load. For capacitive load, derate by 20%.

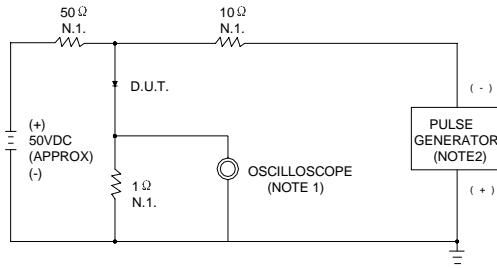
		TVR2B	TVR2D	TVR2G	TVR2J	UNITS
Maximum recurrent peak reverse voltage	V_{RRM}	100	200	400	600	V
Maximum RMS voltage	V_{RMS}	70	140	280	420	V
Maximum DC blocking voltage	V_{DC}	100	200	400	600	V
Maximum average forward rectified current 9.5mm lead length, @ $T_A=75^\circ\text{C}$	$I_{F(AV)}$	0.5				A
Peak forward surge current 8.3ms single half-sine-wave superimposed on rated load @ $T_J=125^\circ\text{C}$	I_{FSM}	30.0				A
Maximum instantaneous forward voltage @ 1.0 A	V_F	1.4				V
Maximum reverse current @ $T_A=25^\circ\text{C}$ at rated DC blocking voltage @ $T_A=100^\circ\text{C}$	I_R	5.0 100.0				μA
Maximum reverse recovery time (Note1)	t_{rr}	1000				ns
Typical junction capacitance (Note2)	C_J	15				pF
Typical thermal resistance (Note3)	$R_{\theta JA}$	50				$^\circ\text{C/W}$
Operating junction temperature range	T_J	- 55---- +150				$^\circ\text{C}$
Storage temperature range	T_{STG}	- 55---- + 150				$^\circ\text{C}$

NOTE: 1. Measured with $I_F=0.5\text{A}$, $I_R=1\text{A}$, $I_{rr}=0.25\text{A}$.

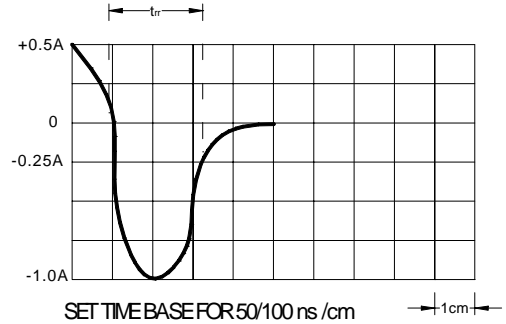
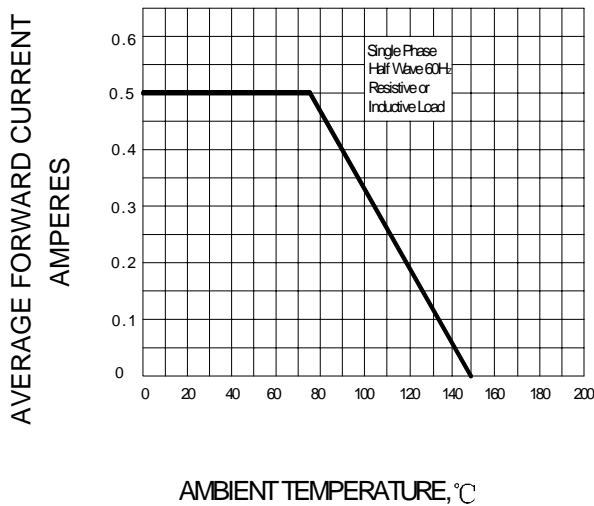
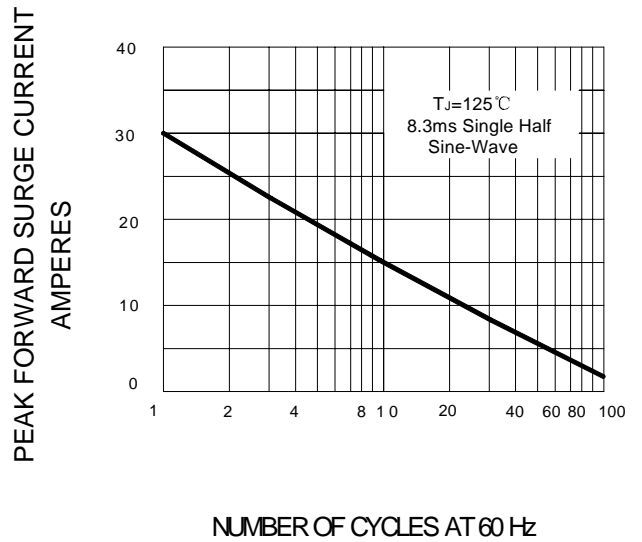
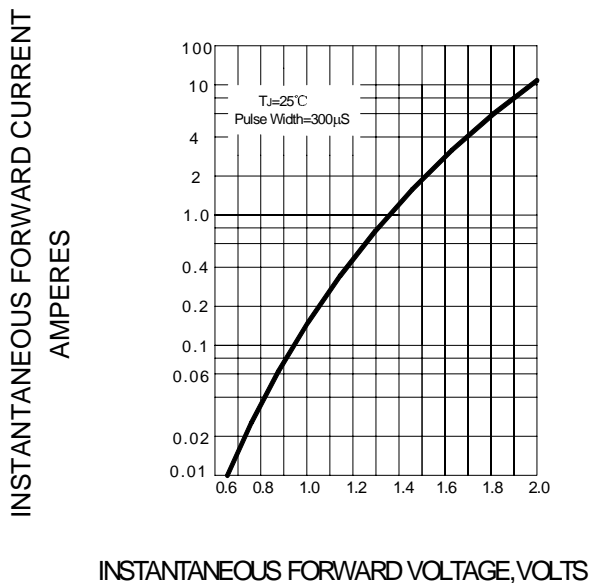
2. Measured at 1.0MHz and applied reverse voltage of 4.0V DC.

3. Thermal resistance from junction to ambient.

Ratings AND Characteristic Curves

FIG.1 – REVERSE RECOVERY TIME CHARACTERISTIC AND TEST CIRCUIT DIAGRAM


NOTES: 1. RISE TIME = 7ns MAX. INPUT IMPEDANCE = 1MΩ. 22pF
 2. RISE TIME = 10ns MAX. SOURCE IMPEDANCE = 50Ω


FIG.2 – FORWARD DERATING CURVE

FIG.3 – PEAK FORWARD SURGE CURRENT

FIG.4 – TYPICAL FORWARD CHARACTERISTIC

FIG.5 – TYPICAL JUNCTION CAPACITANCE
