



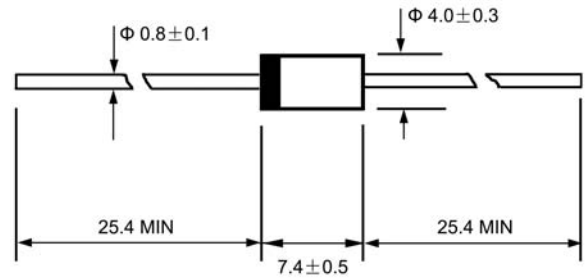
DO - 15L

Features

- ◇ Low cost
- ◇ Diffused junction
- ◇ Low leakage
- ◇ Low forward voltage drop
- ◇ Easily cleaned with freon, alcohol, Isopropanol
- ◇ The plastic material carries U/L recognition 94V-0

Mechanical Data

- ◇ Case: JEDEC DO-15L, molded plastic
- ◇ Polarity: Color band denotes cathode
- ◇ Weight: 0.017 ounces, 0.48 grams
- ◇ Mounting: Any



Dimensions in millimeters

MAXIMUM RATINGS AND ELECTRICAL CHARACTERISTICS

Ratings at 25°C ambient temperature unless otherwise specified.

Single phase, half wave, 60 Hz, resistive or inductive load. For capacitive load, derate by 20%.

		RU2YX	RU2Y	RU2	RU2B	RU2C	UNITS
Maximum peak repetitive reverse voltage	V_{RRM}	100	200	600	800	1000	V
Maximum RMS voltage	V_{RMS}	70	140	420	560	700	V
Maximum DC blocking voltage	V_{DC}	100	200	600	800	1000	V
Maximum average forward rectified current 9.5mm lead length, @ $T_A=75^\circ\text{C}$	$I_{F(AV)}$	1.5	1.0			0.8	A
Peak forward surge current 10ms single half-sine-wave superimposed on rated load @ $T_J=125^\circ\text{C}$	I_{FSM}	30.0	20.0				A
Maximum instantaneous forward voltage @ $I_F=I_{F(AV)}$	V_F	0.95	1.5				V
Maximum reverse current @ $T_A=25^\circ\text{C}$ at rated DC blocking voltage @ $T_A=100^\circ\text{C}$	I_R		10.0				μA
			300.0				
Maximum reverse recovery time (Note1)	t_{rr}	50	100				ns
Typical junction capacitance (Note2)	C_J	50		30			pF
Typical thermal resistance (Note3)	$R_{\theta JL}$	15					$^\circ\text{C/W}$
Operating junction temperature range	T_J	- 55 ----- + 150					$^\circ\text{C}$
Storage temperature range	T_{STG}	- 55 ----- + 150					$^\circ\text{C}$

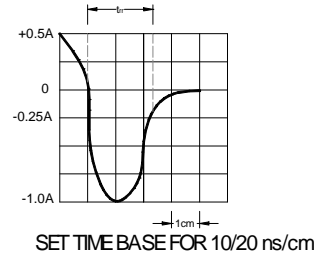
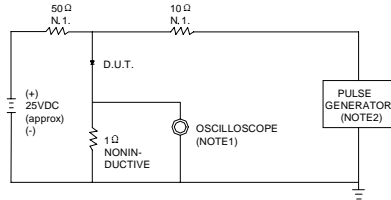
NOTE: 1. Measured with $I_F=0.5\text{A}$, $I_R=1\text{A}$, $t_{rr}=0.25\text{A}$.

2. Measured at 1.0MHz and applied reverse voltage of 4.0V DC.

3. Thermal resistance junction ambient

Ratings AND Characteristic Curves

FIG.1 – TEST CIRCUIT DIAGRAM AND REVERSE RECOVERY TIME CHARACTERISTIC



NOTES:1.RISE TIME = 7ns MAX.INPUT IMPEDANCE =1MΩ. 22pF.
2.RISE TIME =10ns MAX.SOURCE IMPEDANCE=50 Ω.

FIG.2 – TYPICAL FORWARD CHARACTERISTIC

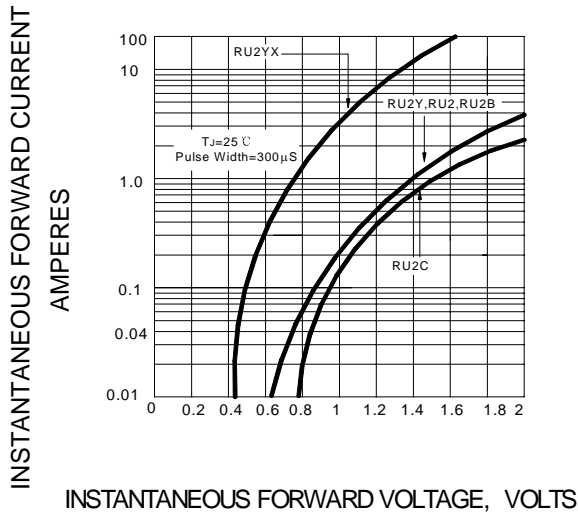


FIG.3 – FORWARD DERATING CURVE

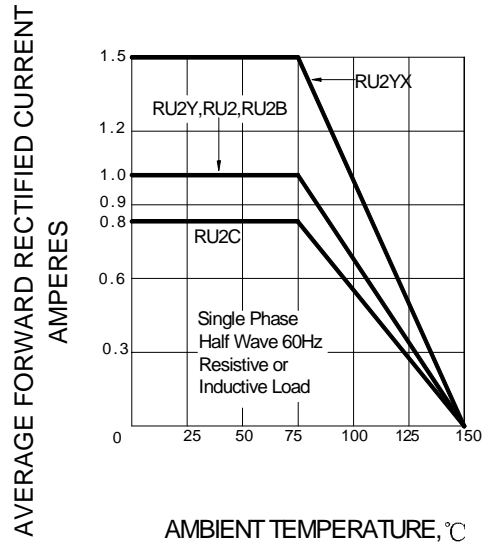


FIG.4 – PEAK FORWARD SURGE CURRENT

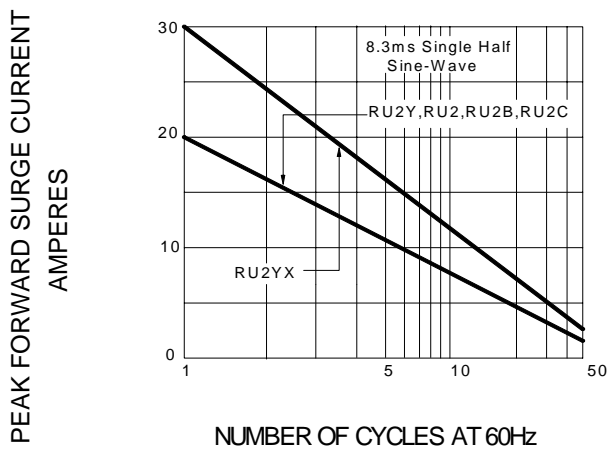


FIG.5 – TYPICAL JUNCTION CAPACITANCE

