

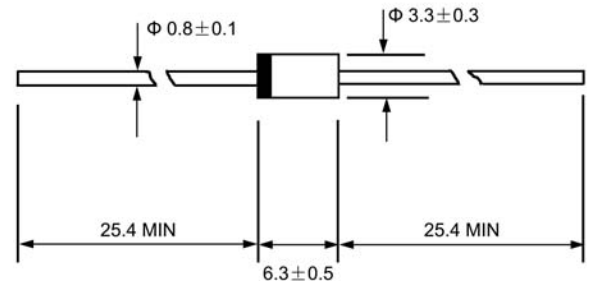


## Features

- ◇ Low cost
- ◇ Diffused junction
- ◇ Low leakage
- ◇ Low forward voltage drop
- ◇ High current capability
- ◇ Easily cleaned with freon, alcohol, Isopropand and similar solvents

## Mechanical Data

- ◇ Case: JEDEC DO-15, molded plastic
- ◇ Terminals: Axial leads, solderable per MIL-STD-202, Method 208
- ◇ Polarity: Color band denotes cathode
- ◇ Weight: 0.014 ounces, 0.39 grams
- ◇ Mounting: Any



Dimensions in millimeters

## MAXIMUM RATINGS AND ELECTRICAL CHARACTERISTICS

Ratings at 25°C ambient temperature unless otherwise specified.

Single phase, half wave, 60 Hz, resistive or inductive load. For capacitive load, derate by 20%.

		RG2Y	RG2Z	RG2	RG2A	UNITS
Maximum peak repetitive reverse voltage	$V_{RRM}$	70	200	400	600	V
Maximum RMS voltage	$V_{RMS}$	49	140	280	420	V
Maximum DC blocking voltage	$V_{DC}$	70	200	400	600	V
Maximum average forward rectified current 9.5mm lead length, @ $T_A=75^\circ\text{C}$	$I_{F(AV)}$	1.5	1.2		1.0	A
Peak forward surge current 8.3ms single half-sine-wave superimposed on rated load @ $T_J=125^\circ\text{C}$	$I_{FSM}$	60.0				A
Maximum instantaneous forward voltage @ $I_F=I_{F(AV)}$	$V_F$	1.1	1.5	1.8	2.0	V
Maximum reverse current @ $T_A=25^\circ\text{C}$ at rated DC blocking voltage @ $T_A=100^\circ\text{C}$	$I_R$	500 2500				$\mu\text{A}$
Maximum reverse recovery time (Note1)	$t_{rr}$	50				ns
Typical junction capacitance (Note2)	$C_J$	50			30	pF
Typical thermal resistance (Note3)	$R_{\theta JL}$	12				$^\circ\text{C/W}$
Operating junction temperature range	$T_J$	- 55 ----- + 150				$^\circ\text{C}$
Storage temperature range	$T_{STG}$	- 55 ----- + 150				$^\circ\text{C}$

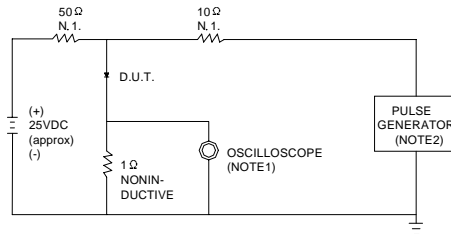
NOTE: 1. Measured with  $I_F=0.5\text{A}$ ,  $I_R=1\text{A}$ ,  $I_{rr}=0.25\text{A}$ .

2. Measured at 1.0MHz and applied reverse voltage of 4.0V DC.

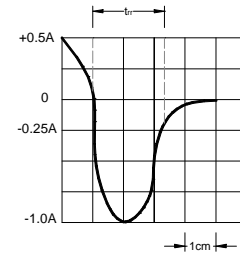
3. Thermal resistance junction to ambient.

## Ratings AND Characteristic Curves

**FIG.1 – TEST CIRCUIT DIAGRAM AND REVERSE RECOVERY TIME CHARACTERISTIC**

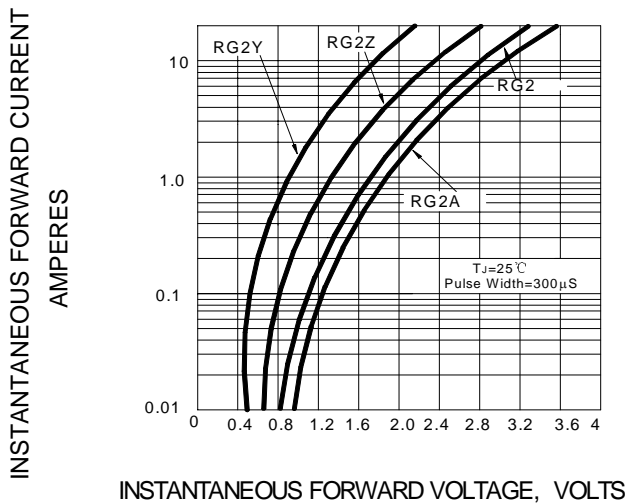


NOTES:1.RISE TIME = 7ns MAX.INPUT IMPEDANCE =1MΩ. 22pF.  
2.RISE TIME =10ns MAX.SOURCE IMPEDANCE=50 Ω.

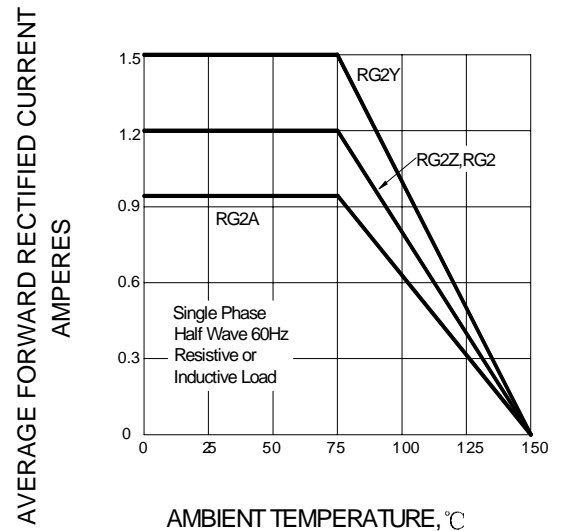


SET TIME BASE FOR 10/20 ns/cm

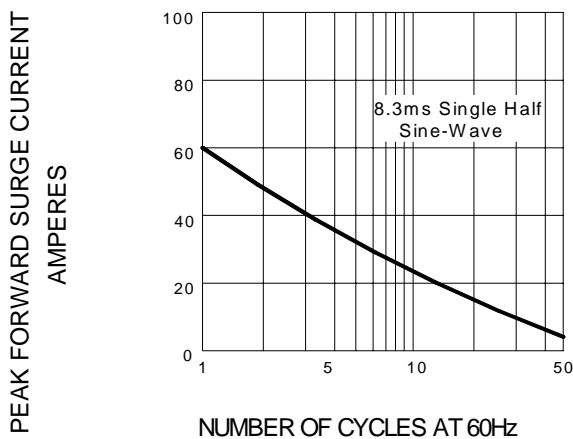
**FIG.2 – TYPICAL FORWARD CHARACTERISTIC**



**FIG.3 – FORWARD DERATING CURVE**



**FIG.4 – PEAK FORWARD SURGE CURRENT**



**FIG.5 – TYPICAL JUNCTION CAPACITANCE**

