

特征 FEATURES

- .35安培工作温度为125度,无热损耗下.
- 35 Ampere Operation At TL=125°C With No Thermal Runaway.
- .正向压降低.Low forward voltage drop
- .低漏电. Low leakage current
- .高浪涌承受能力.High surge current capability

机械数据 MECHANICAL DATA

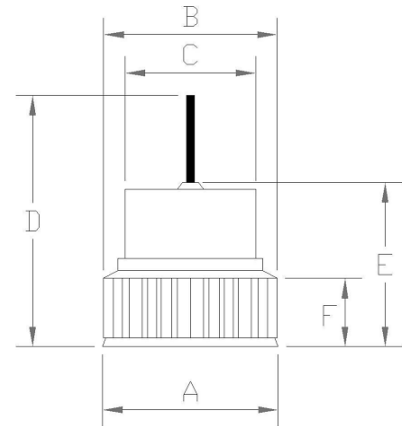
- .封装:铜材质 PF-5 封装. Case: Copper PF-5
- .端子:镀金端子,焊接按照 MIL-STD-202,方法 208.

Terminals: Plated terminals, solderable per MIL-STD-202, method 208.

- .极性: 灌注红色环氧树脂 (端子为正/P 型)
- 灌注黑色环氧树脂 (端子为负/N 型)
- Polarity : By RED Color Epoxy Potting. (Positive)
- By BLACK Color Epoxy Potting. (Negative)

- .重量 : 6.8克. Weight: 6.8grams

PF-5



A=∅13.0±0.2mm B=∅12.8±0.04mm
C=∅9.98±0.03mm D=30.0mm min
E=11.0mm max F=4.5±0.2mm

Dimension in millimeters

极限值和电参数 TA= 25°C除非另有规定. 单相,正半弦波,60HZ,阻抗或电感负载.为电容装载,减少电流的 20%

MAXIMUM RATINGS AND ELECTRICAL CHARACTERISTICS

Rating at 25°C Ambient temp. Unless otherwise specified.Single phase, half sine wave, 60HZ,resistive or inductive load.
For capacitive load, derate current by 20%

| | SYMBOL | DRG | | | | | | | UNITS |
|--|----------|-------------|---------|---------|---------|---------|---------|---------|-------|
| | | 1720/1A | 1720/1B | 1720/1C | 1720/1D | 1720/1E | 1720/1F | 1720/1G | |
| 最大峰值反向电压 Maximum Current Peak Reverse Voltage | VRRM | 50 | 100 | 200 | 300 | 400 | 500 | 600 | Volts |
| 最大反向有效电压 Maximum RMS Voltage | VRMS | 35 | 70 | 140 | 210 | 280 | 350 | 420 | Volts |
| 最大直流阻断电压 Maximum DC Blocking Voltage | VDC | 50 | 100 | 200 | 300 | 400 | 500 | 600 | Volts |
| 最大正向平均整流电流 TL=125°C Maximum Average Forward Rectified Current | I(AV) | 35 | | | | | | | Amps |
| 正向峰值浪涌电流 Peak Forward Surge Current 8.3ms Single Sine-wave on Rated Load (JEDEC Method) | IFSM | 400 | | | | | | | Amps |
| 35A 直流电时最大正向瞬间电压降 Maximum Instantaneous Forward Voltage Drop at 35A DC | VF | 1.0 | | | | | | | Volts |
| 最大反向漏电流 Maximum DC Reverse Current TA=25°C at Rated DC Blocking Voltage TA=100°C | IR | 5 500 | | | | | | | uA |
| 典型结电容 Typical Junction Capacitance (NOTE 1) | CJ | 100 | | | | | | | pF |
| 工作温度存储温度 Operating AND Storage Temperature Range | TSTG/ TJ | -55 to +150 | | | | | | | °C |

NOTE: 1.Measured at 1 MHz and Applied Reverse Voltage of 4.0 Volts D.C.

RATING AND CHARACTERISTIC CURVES DRG1720/1A THRU DRG1720/1G

FIG. 1 – 最大正向平均电流降额

FIG. 1 – MAXIMUM AVERAGE FORWARD CURRENT DERATING

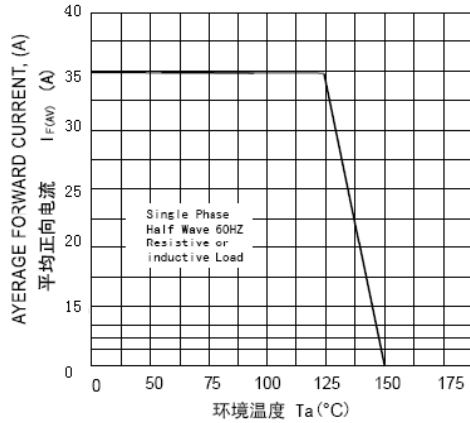


FIG. 2 – 最大非重复正向浪涌电流

FIG. 2 – MAXIMUM NON-REPETITIVE FORWARD

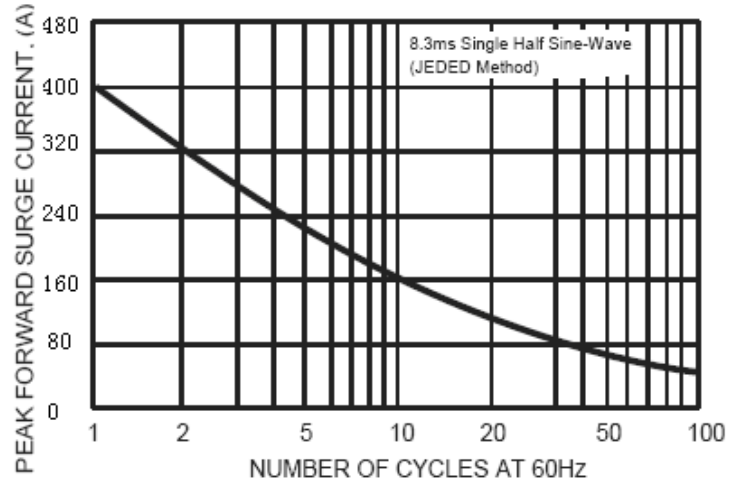


FIG. 3 – 反向特性曲线(典型)

FIG. 3 – TYPICAL REVERSE CHARACTERISTICS

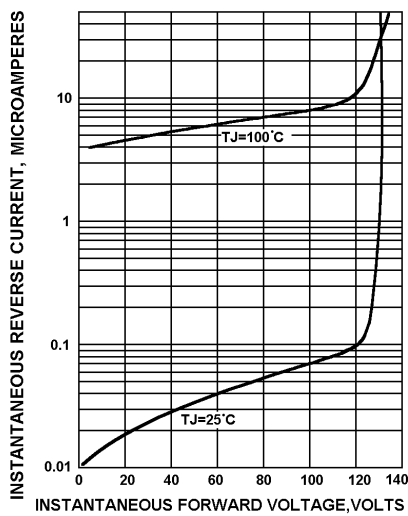


FIG. 4 – TYPICAL FORWARD CHARACTERISTICS

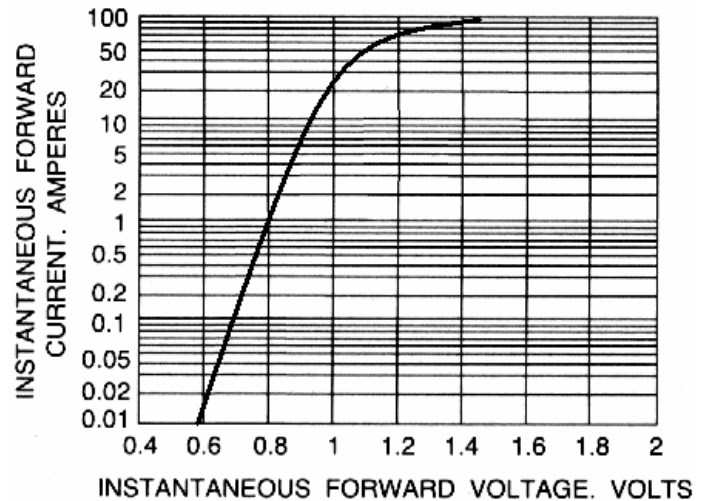


FIG. 5 – 结电容特性曲线

FIG. 5 – TYPICAL JUNCTION CAPACITANCE

