

**特征 FEATURES**

- .低成本. Low cost
- .正向压降低.Low forward voltage drop
- .低漏电. Low leakage current
- .高浪涌承受能力.High surge current capability
- .易拿易放.Easy pick and place

**机械数据 MECHANICAL DATA**

- .封装:铜材质 PF-1 封装. Case: Copper PF-1
- .端子:镀金端子,焊接按照 MIL-STD-202,方法 208.

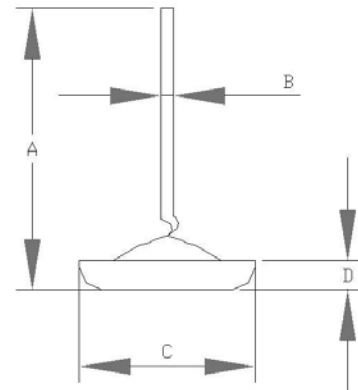
Terminals: Plated terminals, solderable per  
MIL-STD-202, method 208.

- .极性:红色代表阴极,黑色代表阳极引线.

Polarity :Red color denotes cathode

Black color denotes anode lead

- .重量 : 6.8 克. Weight: 6.8grams

**PF-1**


A=22.0-24.0mm    B=∅1.48-1.52mm  
C=∅9.3-9.7mm    D=2.20-2.40mm

Dimension in millimeters

**极限值和电参数** TA= 25℃除非另有规定. 单相,正半弦波,60HZ,阻抗或电感负载.为电容装载,减少电流的 20%

**MAXIMUM RATINGS AND ELECTRICAL CHARACTERISTICS**

Rating at 25℃ Ambient temp. Unless otherwise specified.Single phase, half sine wave, 60HZ,resistive or inductive load.

For capacitive load, derate current by 20%

|  | SYMBOL   | DPZ3524-1   | DPZ3528-1 | DPZ3540-1 | UNITS |
|--|----------|-------------|-----------|-----------|-------|
| 最大峰值反向电压<br>Maximum Current Peak Reverse Voltage   | VRRM     | 16          | 20        | 34        | Volts |
| 最大反向有效电压<br>Working Peak Reverse Voltage   | VRWM     | 16          | 20        | 34        | Volts |
| 最大直流阻断电压<br>Maximum DC Blocking Voltage  | VDC      | 16          | 20        | 34        | Volts |
| 崩溃电压最小值<br>Breakdown voltage Min@ IBR=100mA/TA=25℃   | VBRL     | 20          | 24        | 38        | Volts |
| 崩溃电压最大值<br>Breakdown voltage Max@ IBR=100mA/TA=25℃   | VBRH     | 24          | 32        | 42        | Volts |
| 最大正向平均整流电流 TL=125℃<br>Maximum Average Forward Rectified Current                            | I(AV)    | 35          |           |           | Amps  |
| 正向峰值浪涌电流<br>Peak Forward Surge Current 8.3ms Single Sine-wave on Rated Load (JEDEC Method) | IFSM     | 400         |           |           | Amps  |
| 35A 直流电时最大正向瞬间电压降<br>Maximum Instantaneous Forward Voltage Drop at 35A DC                  | VF       | 1.0         |           |           | Volts |
| 最大反向漏电流 TA=25℃<br>Maximum DC Reverse Current at Rated DC Blocking Voltage                  | IR       | 0.2         |           |           | uA    |
| 正向电压温度系数 IF=10mA<br>Forward Voltage Temperature Coefficient                                | VFTS     | 2           |           |           | mV/℃  |
| 工作温度存储温度<br>Operating AND Storage Temperature Range  | TSTG/ TJ | -55 to +150 |           |           | ℃     |

NOTE: 1.Measured at 1 MHz and Applied Reverse Voltage of 4.0 Volts D.C.

**RATING AND CHARACTERISTIC CURVES DPZ3524-1 THRU DPZ3540-1**

FIG. 1 –最大正向平均电流降额

FIG. 1 –MAXIMUM AVERAGE FORWARD CURRENT DERATING

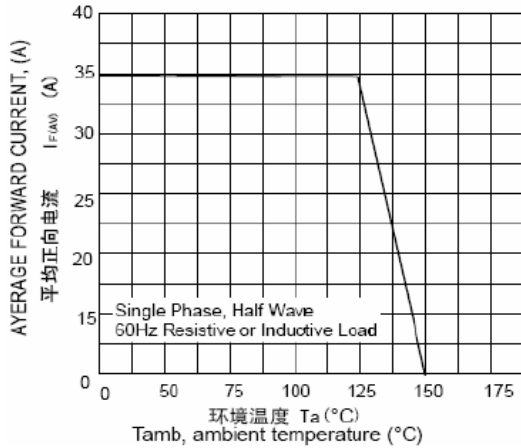


FIG. 3 –脉冲波形

FIG. 3 – PULSE WAVEFORM

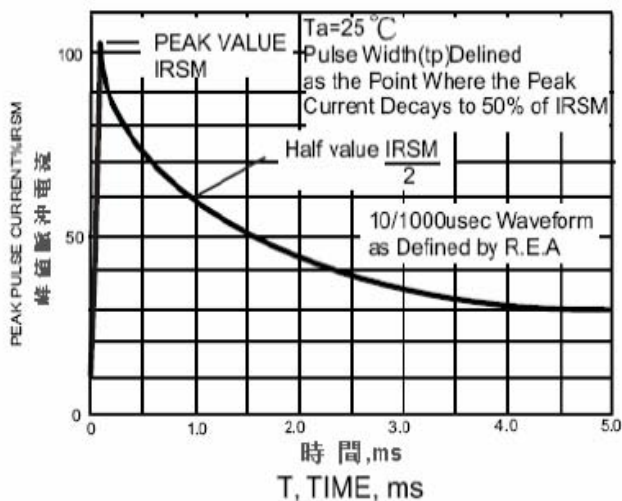


FIG.5–脉冲额定曲线

FIG.5–PULSE RATING CURVE

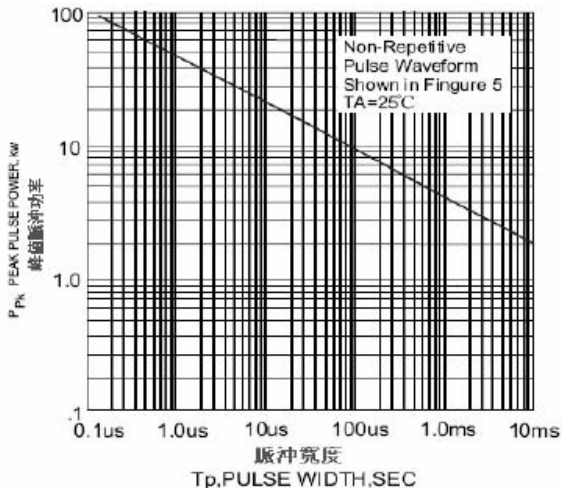


FIG. 2 –最大非重复正向浪涌电流

FIG. 2 –MAXIMUM NON-REPETITIVE FORWARD SURGE CURRENT

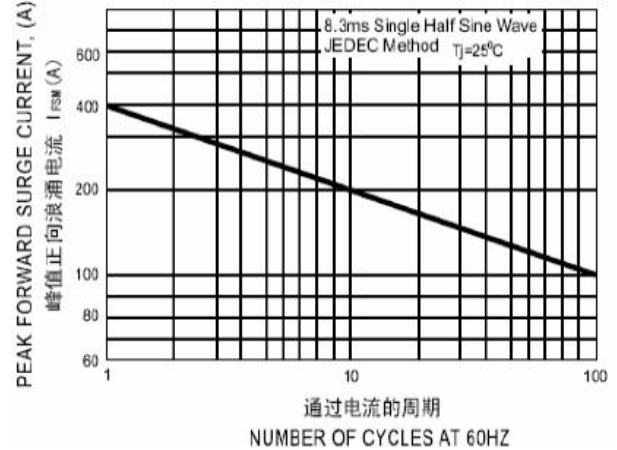


FIG. 4 –正向特性曲线(典型)

FIG.4 – TYPICAL FORWARD CHARACTERISTICS

