

DB35-005--DB25-16

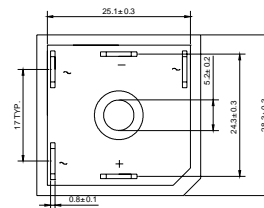
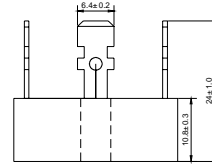
Three-Phase Silicon Bridges

VOLTAGE RANGE: 50 --- 1600 V

CURRENT: 35.0 A



SKBPC



Dimensions in millimeters

Features

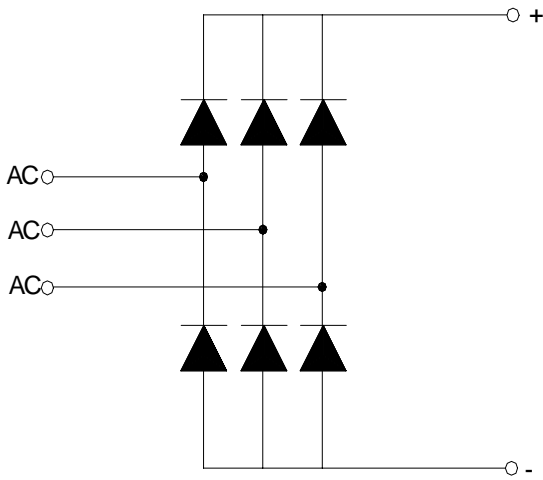
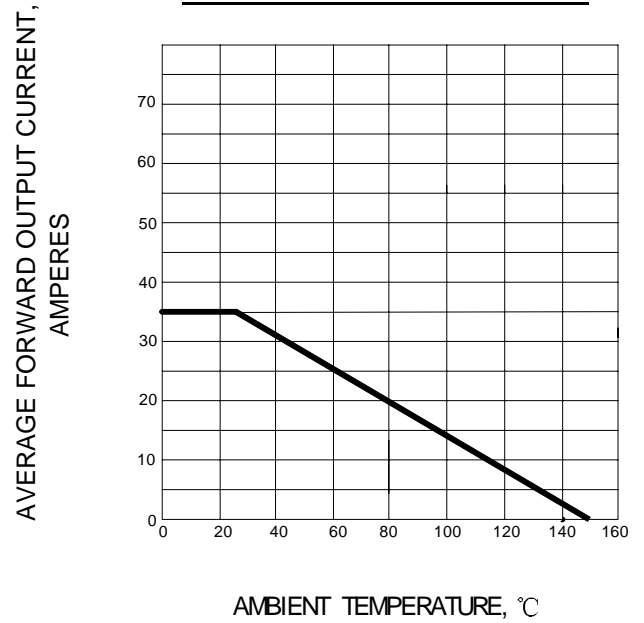
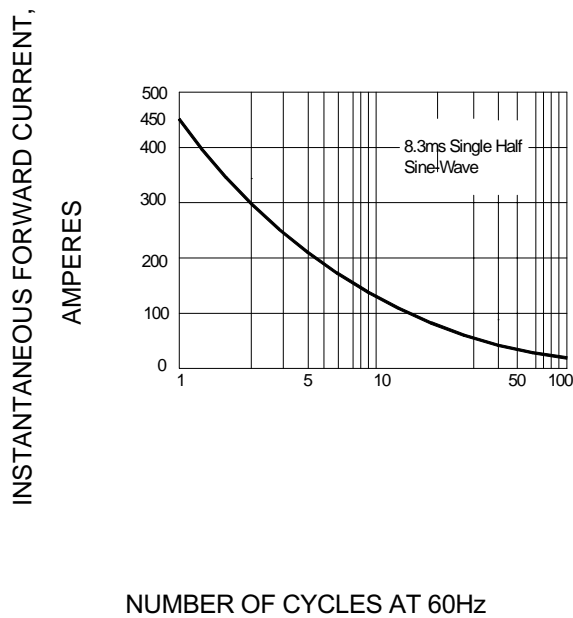
- ◇ Rating to 1600 V PRV
- ◇ Surge overload rating to 450 Amperes peak
- ◇ Ideal for printed circuit board
- ◇ Reliable low cost construction utilizing molded plastic technique results in inexpensive product
- ◇ Lead solderable per MIL-STD-202 method 208

MAXIMUM RATINGS AND ELECTRICAL CHARACTERISTICS

Ratings at 25°C ambient temperature unless otherwise specified.

		DB 35-005	DB 35-01	DB 35-02	DB 35-04	DB 35-06	DB 35-08	DB 35-10	DB 35-12	DB 35-14	DB 35-16	UNITS
Maximum recurrent peak reverse voltage	V_{RRM}	50	100	200	400	600	800	1000	1200	1400	1600	V
Maximum RMS voltage	V_{RMS}	35	70	140	280	420	560	700	840	980	1120	V
Maximum DC blocking voltage	V_{DC}	50	100	200	400	600	800	1000	1200	1400	1600	V
Maximum average forward Output current @ $T_A=25^\circ\text{C}$	$I_{F(AV)}$	35.0										A
Peak forward surge current 8.3ms single half-sine-wave superimposed on rated load	I_{FSM}	450										A
Maximum instantaneous forward voltage @ 12.0 A	V_F	1.05										V
Maximum reverse current @ $T_A=25^\circ\text{C}$ at rated DC blocking voltage @ $T_A=100^\circ\text{C}$	I_R	10.0 1.0										μA mA
Thermal resistance junction to case at DC Operation per bridge	R_{JC}	1.16										K/W
Thermal resistance case to heatsink mounting surface, smooth, flat and greed	R_{CS}	0.2										K/W
Operating junction temperature range	T_J	- 40 ---- + 150										$^\circ\text{C}$
Storage temperature range	T_{STG}	- 40 ---- + 150										$^\circ\text{C}$

Ratings AND Characteristic Curves


FIG.1 -- FORWARD DERATING CURVE

FIG.2 -- TYPICAL FORWARD CHARACTERISTIC

FIG.3-- TYPICAL FORWARD CHARACTERISTIC
