

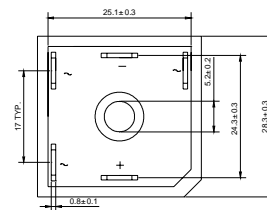
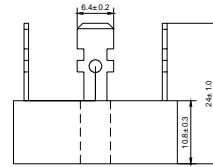
DB15-12--DB15-16

Three-Phase Silicon Bridges

VOLTAGE RANGE: 1200 -- 1600 V

CURRENT: 15.0 A

SKBPC



Dimensions in millimeters

Features

- ◇ Rating to 1600 V
- ◇ Low forward voltage drop
- ◇ Small size, simple installation
- ◇ Tinned copper leads
- ◇ Mounting: Thru hole for #6 screw

MAXIMUM RATINGS AND ELECTRICAL CHARACTERISTICS

Ratings at 25°C ambient temperature unless otherwise specified.

		DB15 - 12	DB15 - 14	DB15 - 16	UNITS
Maximum recurrent peak reverse voltage	V_{RRM}	1200	1400	1600	V
Maximum RMS voltage	V_{RMS}	840	980	1120	V
Maximum DC blocking voltage	V_{DC}	1200	1400	1600	V
Maximum average forward rectified output current @ $T_A=50^\circ\text{C}$	$I_{(AV)}$	15.0			A
Peak forward surge current 8.3ms single half-sine-wave	I_{FSM}	250			A
Maximum forward voltage drop per element at 5.0 A peak	V_F	1.05			V
Maximum reverse current @ $T_A=25^\circ\text{C}$ at rated DC blocking voltage per element @ $T_A=100^\circ\text{C}$	I_R	10			μA
		1.0			mA
Thermal resistance junction to case	$R_{\theta JC}$	3.3			K/W
Operating temperature range	T_j	- 55 --- + 125			°C
Storage temperature range	T_{STG}	- 55 --- + 150			°C