

HER101-HER108

1.0AMP. High Efficient Rectifiers

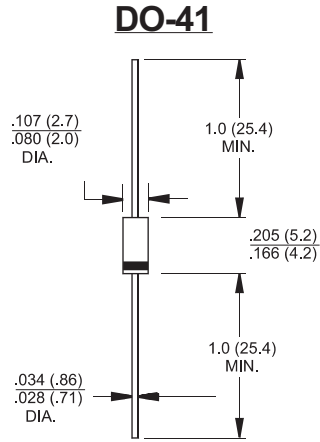


Features

- ◇ High efficiency, Low VF
- ◇ High current capability
- ◇ High reliability
- ◇ High surge current capability
- ◇ For use in low voltage, high frequency inverter, free wheeling, and polarity protection application.

Mechanical Data

- ◇ Cases: Molded plastic DO-41
- ◇ Epoxy: UL 94V0 rate flame retardant
- ◇ Polarity: Color band denotes cathode
- ◇ High temperature soldering guaranteed:
260°C/10 seconds/.375"(.95mm) lead lengths at 5 lbs., (2.3kg) tension
- ◇ Weight: 0.35 gram



Dimensions in inches and (millimeters)

Maximum Ratings and Electrical Characteristics

Rating at 25 °C ambient temperature unless otherwise specified.

Single phase, half wave, 60 Hz, resistive or inductive load.

For capacitive load, derate current by 20%

Type Number	Symbol	HER	HER	HER	HER	HER	HER	HER	HER	Units	
		101	102	103	104	105	106	107	108		
Maximum Recurrent Peak Reverse Voltage	V_{RRM}	50	100	200	300	400	600	800	1000	V	
Maximum RMS Voltage	V_{RMS}	35	70	140	210	280	420	560	700	V	
Maximum DC Blocking Voltage	V_{DC}	50	100	200	300	400	600	800	1000	V	
Maximum Average Forward Rectified Current .375 (9.5mm) Lead Length @ $T_A = 55^\circ C$	$I_{(AV)}$	1.0								A	
Peak Forward Surge Current, 8.3 ms Single Half Sine-wave Superimposed on Rated Load (JEDEC method)	I_{FSM}	30								A	
Maximum Instantaneous Forward Voltage @ 1.0A	V_F	1.0			1.3		1.7			V	
Maximum DC Reverse Current $T_A=25^\circ C$ at Rated DC Blocking Voltage $T_A=125^\circ C$	I_R	5.0					150				μA
Maximum Reverse Recovery Time (Note 1)	T_{rr}	50					75				nS
Typical Junction Capacitance (Note 2)	C_j	25					20				pF
Typical Thermal Resistance	$R_{\theta JA}$	70								$^\circ C/W$	
Operating Temperature Range	T_J	-65 to +150								$^\circ C$	
Storage Temperature Range	T_{STG}	-65 to +150								$^\circ C$	

- Notes:
1. Reverse Recovery Test Conditions: $I_F=0.5A$, $I_R=1.0A$, $I_{RR}=0.25A$
 2. Measured at 1 MHz and Applied Reverse Voltage of 4.0 V D.C.
 3. Mount on Cu-Pad Size 5mm x 5mm on PCB.

RATINGS AND CHARACTERISTIC CURVES (HER101 THRU HER108)

FIG.1- MAXIMUM FORWARD CURRENT DERATING CURVE

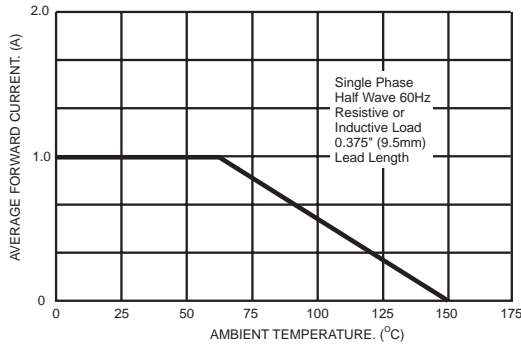


FIG.2- TYPICAL REVERSE CHARACTERISTICS

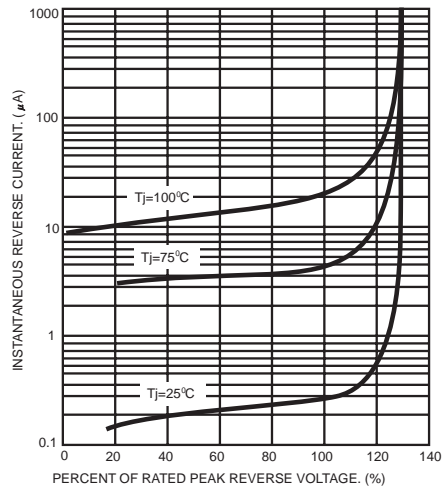


FIG.3- MAXIMUM NON-REPETITIVE FORWARD SURGE CURRENT

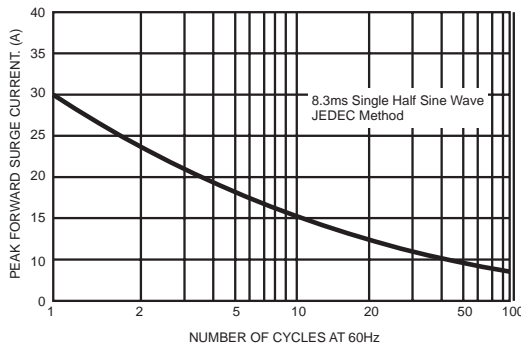


FIG.5- TYPICAL INSTANTANEOUS FORWARD CHARACTERISTICS

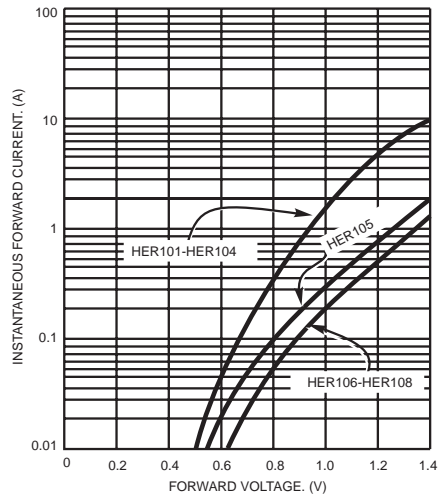


FIG.4- TYPICAL JUNCTION CAPACITANCE

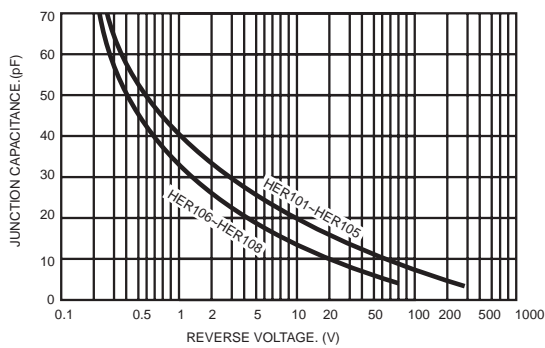
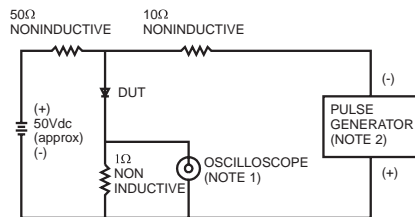
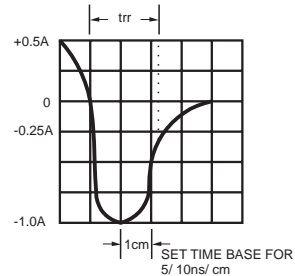


FIG.6- REVERSE RECOVERY TIME CHARACTERISTIC AND TEST CIRCUIT DIAGRAM



NOTES: 1. Rise Time=7ns max. Input Impedance= 1 megohm 22pf
2. Rise Time=10ns max. Source Impedance= 50 ohms

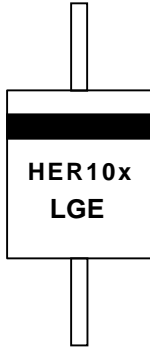




HER101-HER108

1.0AMP. High Efficient Rectifiers

MARKING INFORMATION



Cathode = Polarity Band
HER10xG = Device Number
x = 1, 2, 3, 4, 5, 6, 7 or 8
LGE = Manufacturer's Logo

TAPING SPECIFICATIONS

