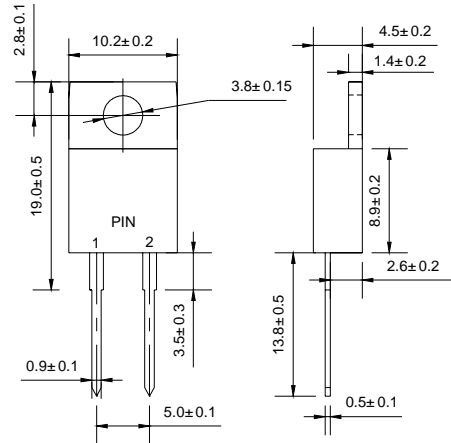




TO-220AC



Dimensions in millimeters

Features

- ◇ Low cost
- ◇ Low leakage
- ◇ Low forward voltage drop
- ◇ High current capability
- ◇ Easily cleaned with alcohol, Isopropanol and similar solvents
- ◇ The plastic material carries U/L recognition 94V-0

Mechanical Data

- ◇ Case: JEDEC TO-220AC, molded plastic
- ◇ Polarity: As marked
- ◇ Weight: 0.064 ounces, 1.96 gram
- ◇ Mounting position: Any

MAXIMUM RATINGS AND ELECTRICAL CHARACTERISTICS

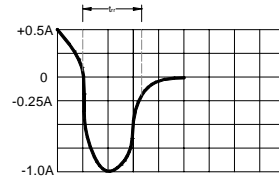
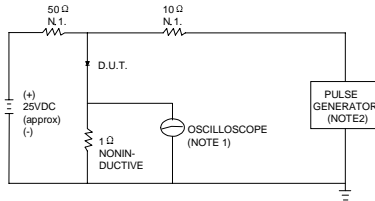
Ratings at 25 °C ambient temperature unless otherwise specified.

Single phase, half wave, 60 Hz, resistive or inductive load. For capacitive load, derate by 20%.

		GF 505	GF 510	GF 520	GF 530	GF 540	GF 560	UNITS
Maximum recurrent peak reverse voltage	V_{RRM}	50	100	200	300	400	600	V
Maximum RMS voltage	V_{RMS}	35	70	140	210	280	420	V
Maximum DC blocking voltage	V_{DC}	50	100	200	300	400	600	V
Maximum average forward rectified current @ $T_C=100^\circ C$	$I_{F(AV)}$	5.0						A
Peak forward surge current 8.3ms single half-sine-wave superimposed on rated load @ $T_J=125^\circ C$	I_{FSM}	60						A
Maximum instantaneous forward voltage @ 5.0A	V_F	0.98			1.3		1.7	V
Maximum reverse current @ $T_A=25^\circ C$ at rated DC blocking voltage @ $T_A=150^\circ C$	I_R	5.0			10.0			μA
		250			500			
Maximum reverse recovery time (Note1)	t_{rr}	30						ns
Operating junction temperature range	T_J	- 55 ----- + 150						$^\circ C$
Storage temperature range	T_{STG}	- 55 ----- + 150						$^\circ C$

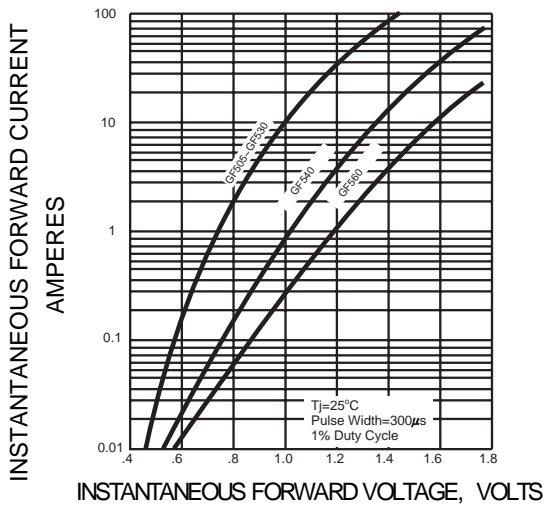
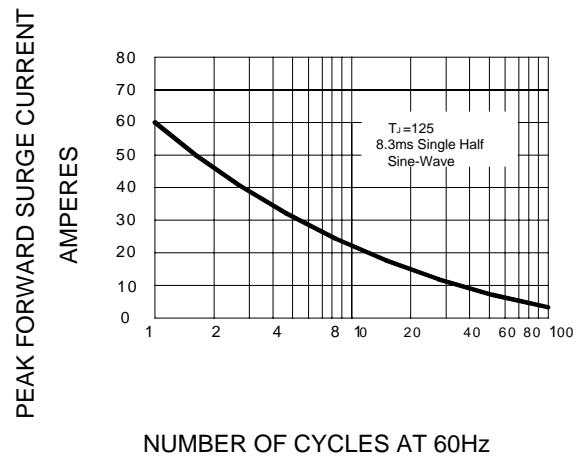
NOTE: 1. Measured with $I_F=0.5A$, $I_R=1A$, $I_{rr}=0.25A$.

Ratings AND Characteristic Curves

FIG.1 – TEST CIRCUIT DIAGRAM AND REVERSE RECOVERY TIME CHARACTERISTIC


SET TIME BASE FOR 15ns/cm

NOTES:1.RISE TIME = 7ns MAX.INPUT IMPEDANCE = 1MΩ. 22pF.
 2.RISE TIME = 10ns MAX.SOURCE IMPEDANCE=50 Ω.

FIG.2 – TYPICAL FORWARD CHARACTERISTIC

FIG.3 – PEAK FORWARD SURGE CURRENT

FIG.4-FORWARD DERATING CURVE
