

FR101GL-FR107GL

Glass Passivated Rectifiers

VOLTAGE RANGE: 50 --- 1000 V

CURRENT: 1.0 A



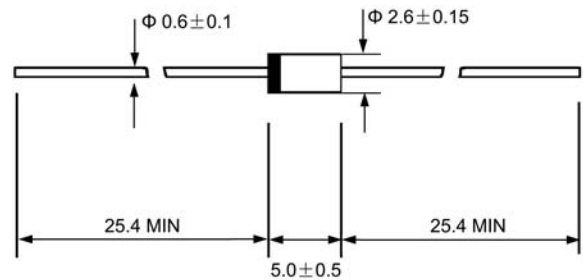
A - 405

Features

- ◇ Low cost
- ◇ Glass passivated junction
- ◇ Low leakage
- ◇ Low forward voltage drop
- ◇ High current capability
- ◇ Easily cleaned with alcohol, Isopropanol and similar solvents
- ◇ The plastic material carries U/L recognition 94V-0

Mechanical Data

- ◇ Case: JEDEC A-405, molded plastic
- ◇ Terminals: Axial lead, solderable per MIL-STD-202, Method 208
- ◇ Polarity: Color band denotes cathode
- ◇ Weight: 0.008 ounces, 0.23 grams
- ◇ Mounting position: Any



Dimensions in millimeters

MAXIMUM RATINGS AND ELECTRICAL CHARACTERISTICS

Ratings at 25°C ambient temperature unless otherwise specified.

Single phase, half wave, 60 Hz, resistive or inductive load. For capacitive load, derate by 20%.

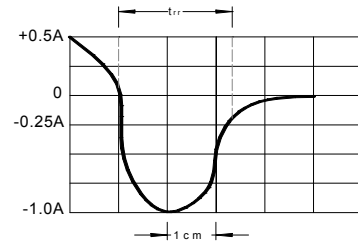
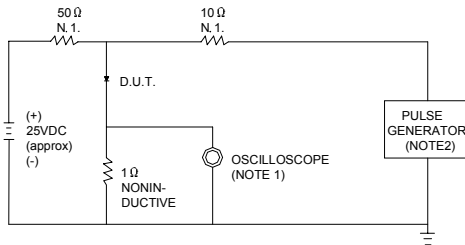
		FR101GL	FR102GL	FR103GL	FR104GL	FR105GL	FR106GL	FR107GL	UNITS
Maximum recurrent peak reverse voltage	V_{RRM}	50	100	200	400	600	800	1000	V
Maximum RMS voltage	V_{RMS}	35	70	140	280	420	560	700	V
Maximum DC blocking voltage	V_{DC}	50	100	200	400	600	800	1000	V
Maximum average forward rectified current 9.5mm lead length, @ $T_A=75^\circ C$	$I_{F(AV)}$	1.0							A
Peak forward surge current 8.3ms single half-sine-wave superimposed on rated load @ $T_J=125^\circ C$	I_{FSM}	30.0							A
Maximum instantaneous forward voltage at 1.0A	V_F	1.3							V
Maximum reverse current @ $T_A=25^\circ C$ at rated DC blocking voltage @ $T_A=100^\circ C$	I_R	5.0 100.0							μA
Maximum reverse recovery time (Note1)	t_{rr}	150			250		500		ns
Typical junction capacitance (Note2)	C_J	12.0							pF
Typical thermal resistance (Note3)	$R_{\theta JA}$	55.0							$^\circ C/W$
Operating junction temperature range	T_J	- 55 ---- + 175							$^\circ C$
Storage temperature range	T_{STG}	- 55 ---- +175							$^\circ C$

NOTE: 1. Measured with $I_F=0.5A$, $I_R=1A$, $I_r=0.25A$.

2. Measured at 1.0MHZ and applied reverse voltage of 4.0V DC.

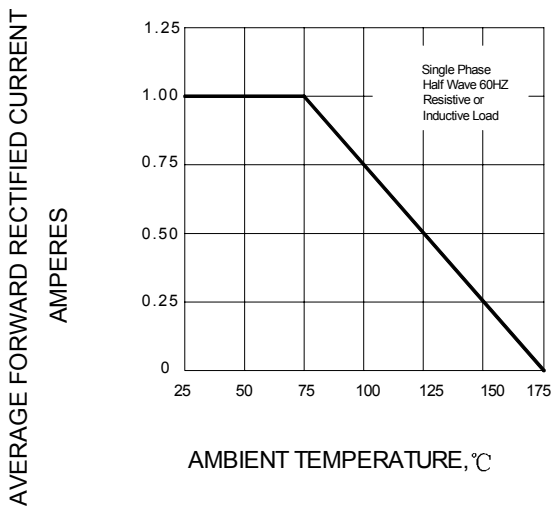
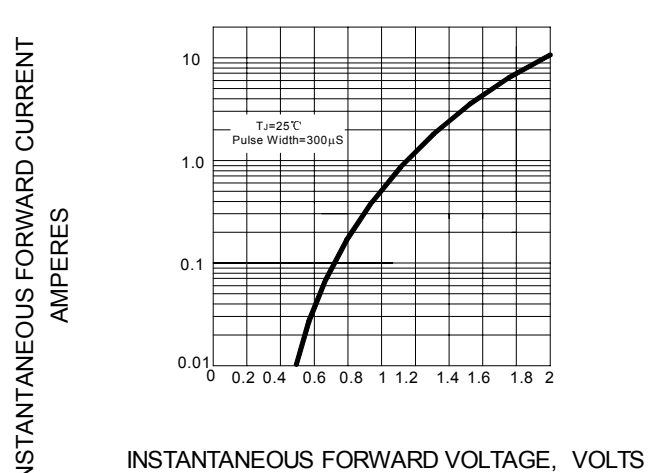
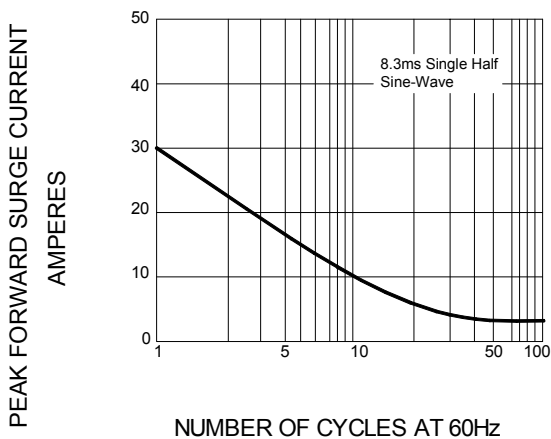
3. Thermal resistance junction to ambient

Ratings AND Characteristic Curves

FIG.1 – TEST CIRCUIT DIAGRAM AND REVERSE RECOVERY TIME CHARACTERISTIC


NOTES: 1. RISE TIME = 7ns MAX.INPUT IMPEDANCE = $1M\Omega$. 22pF.
 2. RISE TIME = 10ns MAX.SOURCE IMPEDANCE = 50 Ω .

SET TIME BASE FOR 50/100 ns/cm

FIG.2 – TYPICAL FORWARD CURRENT DERATING CURVE

FIG.3 – TYPICAL INSTANTANEOUS FORWARD CHARACTERISTICS

FIG.4 – PEAK FORWARD SURGE CURRENT

FIG.5 – TYPICAL JUNCTION CAPACITANCE
