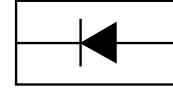


Feature

The PSD213D4007G is a switching diode
 Pb-Free Packages are available



Maximum Ratings and Electrical characteristics

Ratings at 25°C ambient temperature unless otherwise specified. Single phase, half wave,60Hz,resistive or inductive load.
 For capacitive load, derate current by 20%.

Parameter	Symbol	Max.	Unit
Maximum Recurrent Peak Reverse Voltage	V_{RRM}	1000	V
Maximum RMS Voltage	V_{RMS}	700	V
Maximum DC Blocking Voltage	V_{DC}	1000	V
Maximum Average Forward Rectified Current at $T_A=75^\circ\text{C}$	$I_{F(AV)}$	1	A
Peak Forward Surge Current 8.3 ms Single Half Sine Wave Superimposed on Rated Load(JEDEC Method)	I_{FSM}	25	A
Maximum Forward Voltage at 1A	V_F	1.1	V
Maximum Reverse Current at Rated DC Blocking Voltage	I_R	5 50	μA
Typical Junction Capacitance ¹⁾	C_J	15	pF
Typical Thermal Resistance ²⁾	$R_{\theta JA}$	75	$^\circ\text{C}/\text{W}$
Typical Thermal Resistance ³⁾	$R_{\theta JL}$	30	$^\circ\text{C}/\text{W}$
Operating and Storage Temperature Range	T_J, T_{STG}	-55 to +150	$^\circ\text{C}$

- ¹⁾ Measured at 1MHz and applied reverse voltage of 4V
- ²⁾ Thermal resistance from junction to ambient 0.24*0.24(6*6mm) copper pads to each terminal
- ³⁾ Thermal resistance from junction to terminal 0.24*0.24(6*6mm) copper pads to each terminal

Typical Characteristics

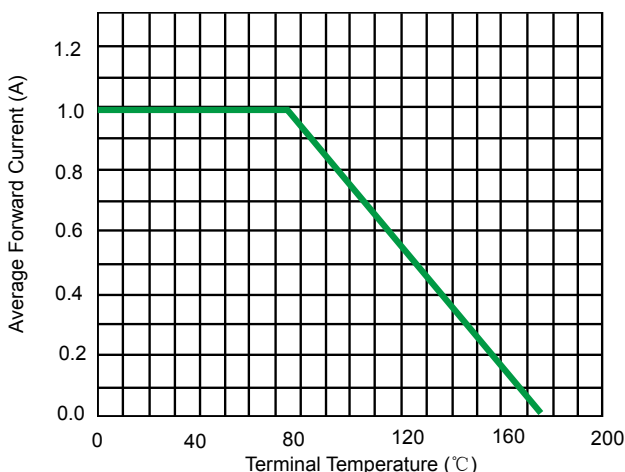


Fig 1. Typical forward current derating curve

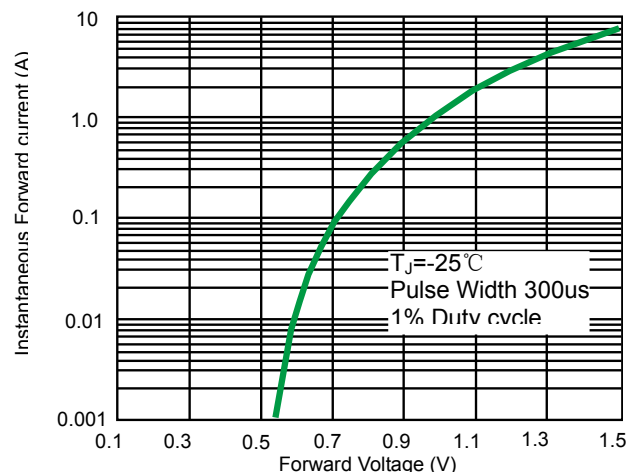


Fig 2. Typical forward characteristics

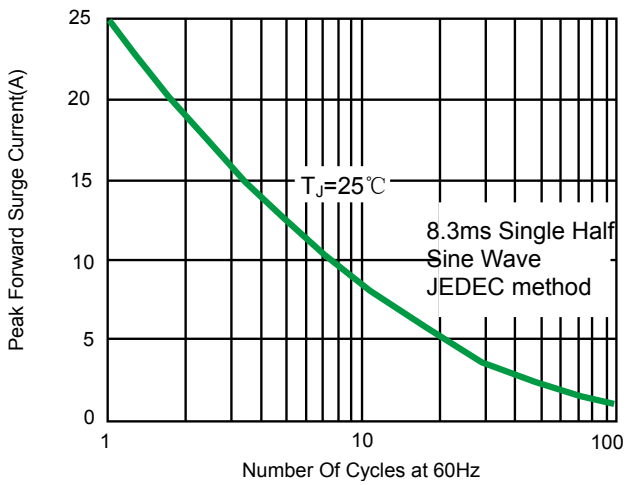


Fig 3. Maximum Non-repetitive forward surge current

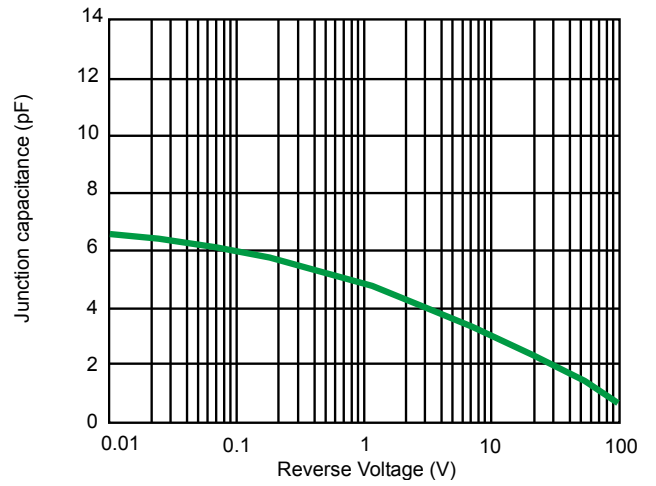


Fig 4. Typical junction capacitance

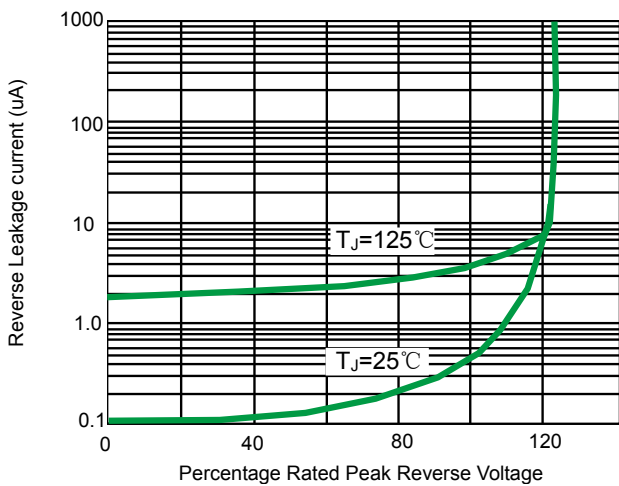
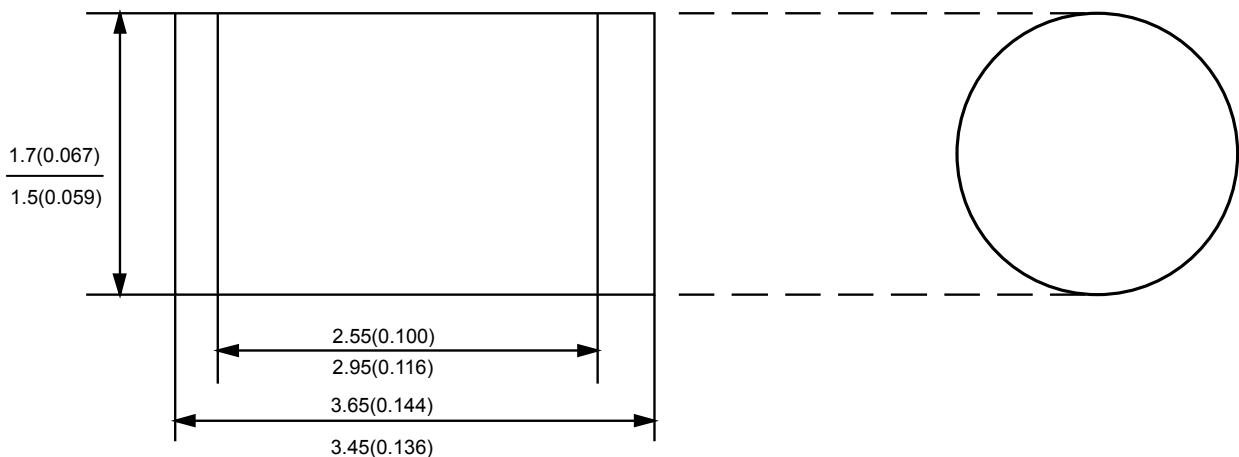



Fig 5. Typical reverse characteristics

Product dimension (DO-213AA)




IMPORTANT NOTICE

 and **Prisemi**[®] are registered trademarks of **Prisemi Electronics Co., Ltd (Prisemi)** ,Prisemi reserves the right to make changes without further notice to any products herein. Prisemi makes no warranty, representation or guarantee regarding the suitability of its products for any particular purpose, nor does Prisemi assume any liability arising out of the application or use of any product or circuit, and specifically disclaims any and all liability, including without limitation special, consequential or incidental damages. “Typical” parameters which may be provided in Prisemi data sheets and/or specifications can and do vary in different applications and actual performance may vary over time. All operating parameters, including “Typicals” must be validated for each customer application by customer’s technical experts. Prisemi does not convey any license under its patent rights nor the rights of others. The products listed in this document are designed to be used with ordinary electronic equipment or devices, Should you intend to use these products with equipment or devices which require an extremely high level of reliability and the malfunction of with would directly endanger human life (such as medical instruments, aerospace machinery, nuclear-reactor controllers, fuel controllers and other safety devices), please be sure to consult with our sales representative in advance.

Website: <http://www.prisemi.com>

For additional information, please contact your local Sales Representative.

©Copyright 2009, Prisemi Electronics

 **Prisemi**[®] is a registered trademark of Prisemi Electronics.

All rights are reserved.