

#### Absolute maximum ratings

( $T_a=25^\circ\text{C}$ )

Symbol	Ratings	Unit
$V_{CB0}$	-100	V
$V_{CEO}$	-100	V
$V_{EBO}$	-6	V
$I_c$	-5	A
$I_{CP}$	-8 (PW $\leq$ 1ms, $D_u\leq$ 50%)	A
$I_B$	-0.5	A
$I_F$	-5 (PW $\leq$ 0.5ms, $D_u\leq$ 25%)	A
$I_{FSM}$	-8 (PW $\leq$ 10ms, single)	A
$V_R$	120	V
$P_T$	5 ( $T_a=25^\circ\text{C}$ )	W
	25 ( $T_c=25^\circ$ )	
$V_{ISO}$	1000 (Between fin and lead pin, AC)	$V_{rms}$
$T_j$	150	$^\circ\text{C}$
$T_{stg}$	-40 to +150	$^\circ\text{C}$
$\theta_{j-c}$	5	$^\circ\text{C/W}$

#### Electrical characteristics

( $T_a=25^\circ\text{C}$ )

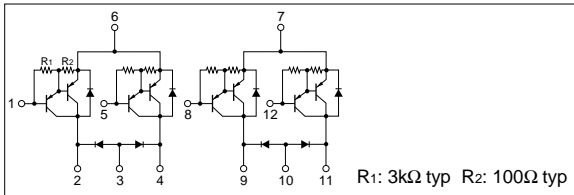
Symbol	Specification			Unit	Conditions
	min	typ	max		
$I_{CB0}$			-10	$\mu\text{A}$	$V_{CB}=-100\text{V}$
$I_{EBO}$			-10	mA	$V_{EB}=-6\text{V}$
$V_{CEO}$	-100			V	$I_c=-10\text{mA}$
$h_{FE}$	2000	5000	15000		$V_{CE}=-2\text{V}$ , $I_c=-3\text{A}$
$V_{CE(sat)}$		-1.0	-1.5	V	$I_c=-3\text{A}$ , $I_B=-6\text{mA}$
$V_{BE(sat)}$		-1.6	-2.0	V	

#### Diode for flyback voltage absorption

( $T_a=25^\circ\text{C}$ )

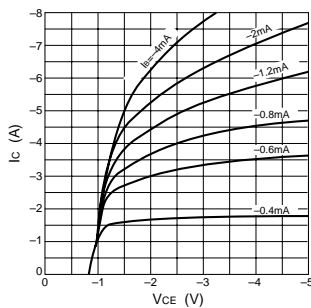
Symbol	Specification			Unit	Conditions
	min	typ	max		
$V_R$	120			V	$I_R=10\mu\text{A}$
$V_F$			1.2	V	$I_F=1\text{A}$
$I_R$			10	$\mu\text{A}$	$V_R=120\text{V}$
$t_{rr}$		100		ns	$I_F=\pm 100\text{mA}$

#### Equivalent circuit diagram

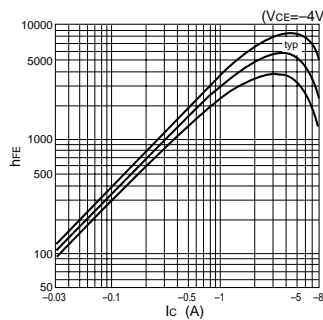


#### Characteristic curves

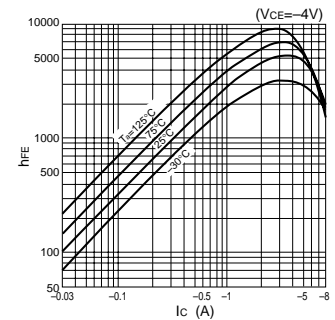
$I_c$ - $V_{CE}$  Characteristics (Typical)



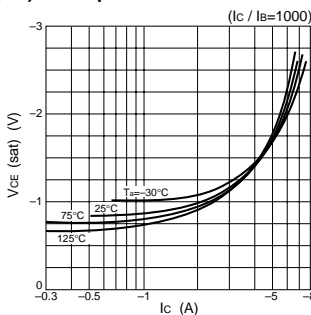
$h_{FE}$ - $I_c$  Characteristics (Typical)



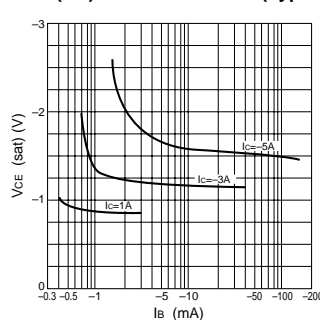
$h_{FE}$ - $I_c$  Temperature Characteristics (Typical)



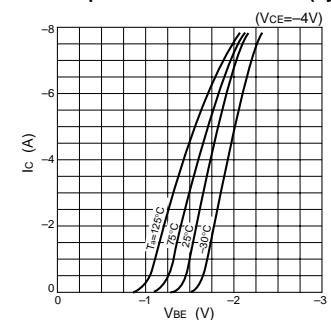
$V_{CE(sat)}$ - $I_c$  Temperature Characteristics (Typical)



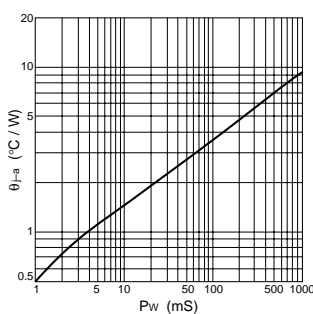
$V_{CE(sat)}$ - $I_B$  Characteristics (Typical)



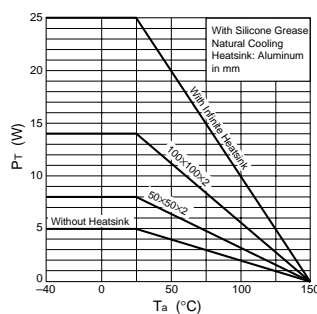
$I_c$ - $V_{BE}$  Temperature Characteristics (Typical)



$\theta_{j-a}$ -PW Characteristics



$P_T$ - $T_a$  Characteristics



Safe Operating Area (SOA)

