

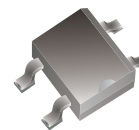
## MMB1G-HF Thru. MMB10G-HF

Reverse Voltage: 100 to 1000 Volts

Forward Current: 0.5 Amp

RoHS Device

Halogen Free

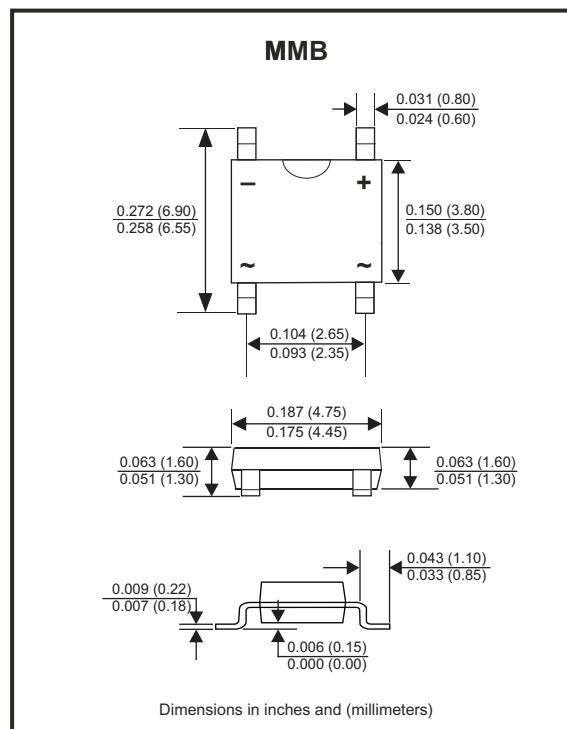


### Features

- Glass passivated chip junctions.
- High surge overload rating: 30A peak.
- Saves space on printed circuit boards.
- High temperature soldering guaranteed:  
260°C/10 seconds at 5 lbs. (2.3kg) tension
- UL recognized file # E464656 Range: MMB6G thru. MMB10G

### Mechanical data

- Case: Molded plastic body over passivated junctions.
- Terminals: Plated leads solderable per MIL-STD-750, Method 2026.
- Polarity: Polarity symbols marked on body.



### Maximum Rating And Electrical Characteristics

Rating at TA=25°C, unless otherwise noted.  
Single phase, half wave, 60Hz, resistive or inductive load.  
For capacitive load, derate current by 20%.

Parameter	Symbol	MMB 1G-HF	MMB 2G-HF	MMB 4G-HF	MMB 6G-HF	MMB 8G-HF	MMB 10G-HF	Unit
Maximum Peak Repetitive Reverse Voltage	V <sub>RRM</sub>	100	200	400	600	800	1000	V
Maximum RMS Reverse Voltage	V <sub>RMS</sub>	70	140	280	420	560	700	V
Maximum DC Blocking Voltage	V <sub>DC</sub>	100	200	400	600	800	1000	V
Maximum Average Forward Output Current @TA=25°C	I <sub>F(AV)</sub>	0.5 <sup>1)</sup> 0.8 <sup>2)</sup>						A
Peak Forward Surge Current, 8.3ms Single Half Sine-wave, Superimposed On Rated Load	I <sub>FSM</sub>	30						A
Maximum Instantaneous Forward Voltage @0.8A	V <sub>F</sub>	1.1						V
Maximum Reverse Current @Rated DC Blocking Voltage	@TA=25°C	5.0						µA
	@TA=100°C	0.5						mA
Typical Thermal Resistance per leg	R <sub>θJA</sub>	85						°C/W
	R <sub>θJL</sub>	20						
Current squared time t<8.3ms, TA=25°C	I <sup>2</sup> t	3.74						A <sup>2</sup> s
Typical junction capacitance per leg	C <sub>J</sub>	13						pF
Operating Junction and Storage Temperature Range	T <sub>J</sub> , T <sub>STG</sub>	-55 to +150						°C

Note: 1. On glass-epoxy P.C.B.  
2. On alumina substrate.

Company reserves the right to improve product design , functions and reliability without notice.

REV: A

## Rating and Characteristic Curves (MMB1G-HF Thru. MMB10G-HF)

Fig.1 - Derating Curve For Output Rectified Current

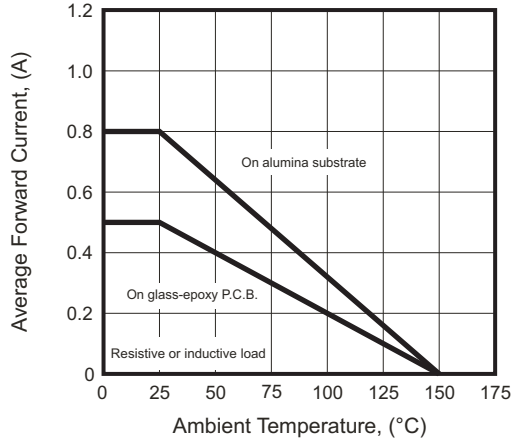


Fig.2 - Maximum Non-repetitive Peak Forward Surge Current Per Leg

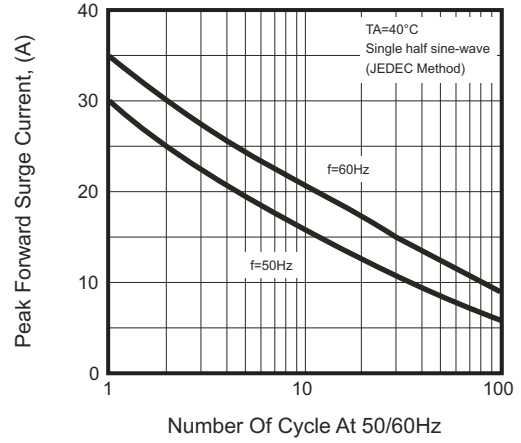


Fig.3 - Typical Forward Voltage Characteristics Per Leg

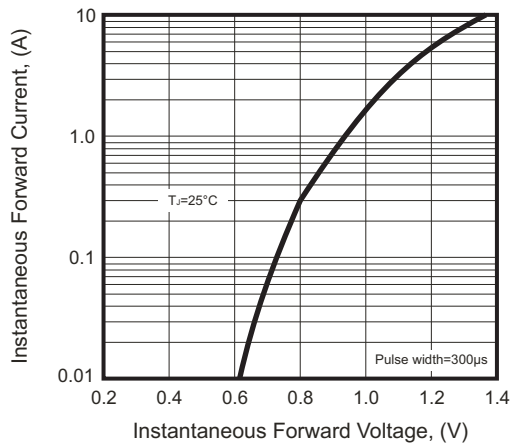


Fig.4 - Typical Reverse Characteristics

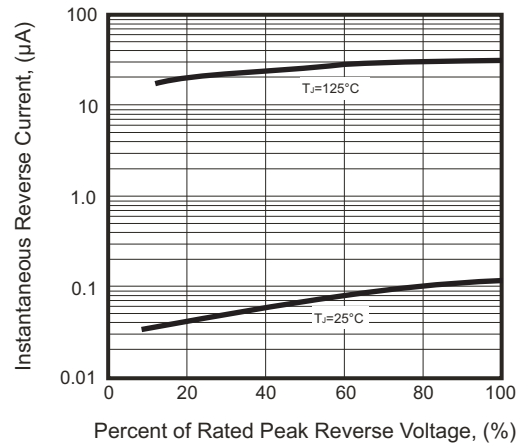
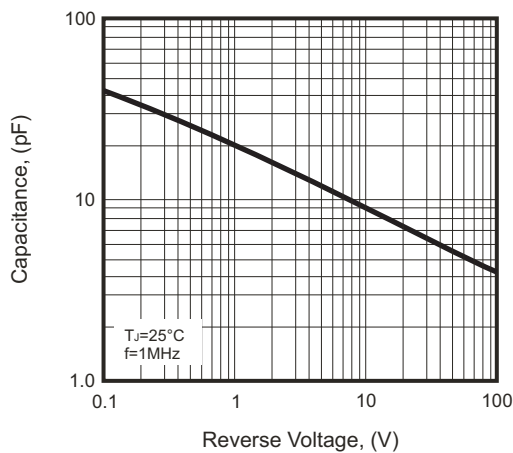
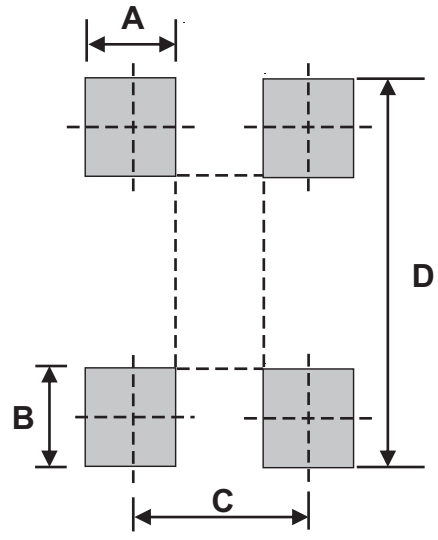


Fig.5 - Typical Junction Capacitance Per Element



## Suggested PAD Layout

SIZE	MMB	
	(mm)	(inch)
A	0.70	0.028
B	1.00	0.039
C	2.60	0.102
D	7.01	0.276



## Standard Packaging

Case Type	REEL PACK	
	REEL ( pcs )	Reel Size (inch)
MMB	5,000	13