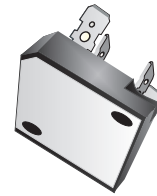


SC35VB80-G Thru. SC35VB160-G

Reverse Voltage: 800V and 1600V

Forward Current: 35A

RoHS Device

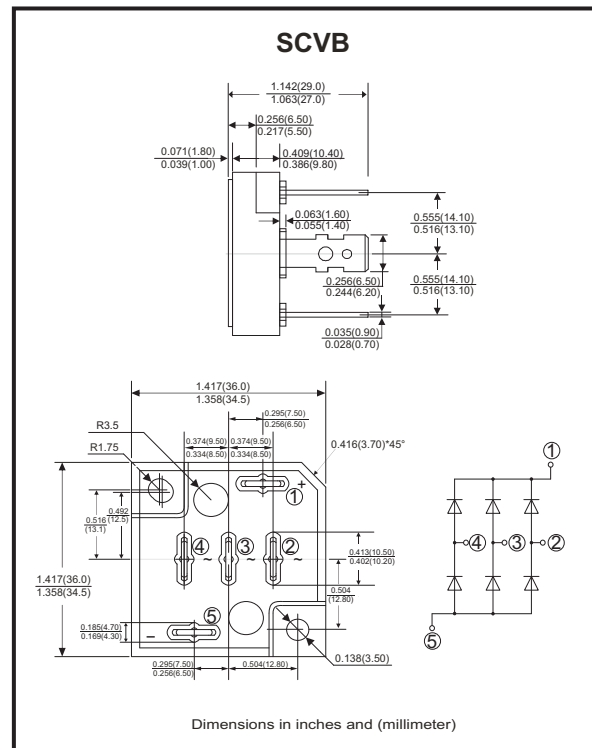


Features

- 3 phase bridge rectifiers
- Surge overload -350 Amperes peak
- Low forward voltage drop
- Materials used carries U/L recognition

Mechanical Data

- Polarit:As marked on Body
- Mounting position:Any
- Weight: 45 grams



Maximum ratings and electrical characteristics

Rating at 25 °C ambient temperature unless otherwise specified.
 Single phase, half wave ,60Hz, resistive or inductive load.
 For capacitive load, derate current by 20%

Parameter	Symbol	SC35VB80-G	SC35VB160-G	Unit
Maximum Recurrent Peak Reverse Voltage	V_{RRM}	800	1600	V
Maximum RMS Bridge Input Voltage	V_{RMS}	560	1120	V
Maximum Average Forward Rectified Output Current @ $T_c=55^{\circ}C$	$I_{(AV)}$	35		A
Peak Forward Surge Current , 8.3ms Single Half Sine-Wave Super Imposed On Rated Load (JEDEC Method)	I_{FSM}	350		A
Current Squared time (1ms<t<10ms)	I^2t	300		A^2s
Dielectric Strength	V_{dis}	2000		V
Mounting Torque	TOR	0.8		N.m
Maximum Forward Voltage Drop Per Element At 12.5A Peak	V_F	1.05	1.1	V
Maximum Reverse Current At Rated DC Blocking Voltage Per Element @ $T_A=25^{\circ}C$	I_R	10	100	μA
Typical Thermal Resistance (Note 1)	$R_{\theta JA}$	Max: 0.7		$^{\circ}C/W$
Operating Temperature Range	T_J	-55 to +150		$^{\circ}C$
Storage Temperature Range	T_{STG}	-55 to +150		$^{\circ}C$

Notes: 1.Thermal Resistance Junction to case.
 2.Company reserves the right to improve product design , functions and reliability without notice.

Rating and Characteristics Curves (SC35VB80-G Thru. SC35VB160-G)

Fig.1 - De-rating Current Output Rectified Current

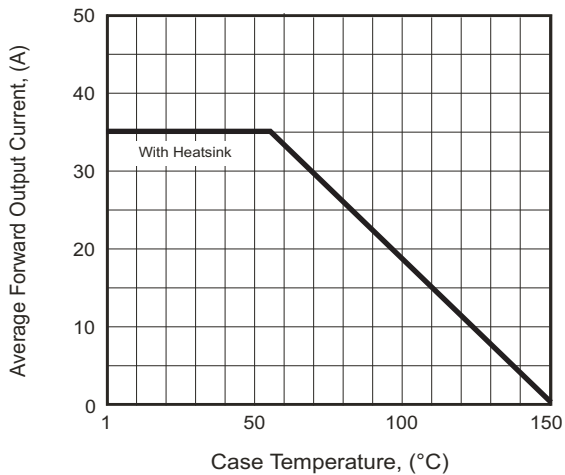


Fig.2 - Typical Forward Characteristics

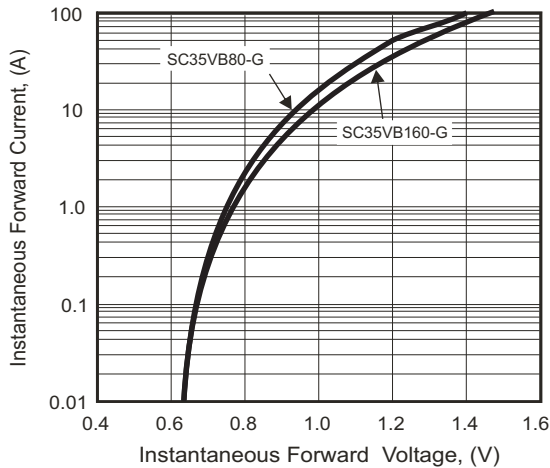


Fig.3 - Maximum Forward Surge Current

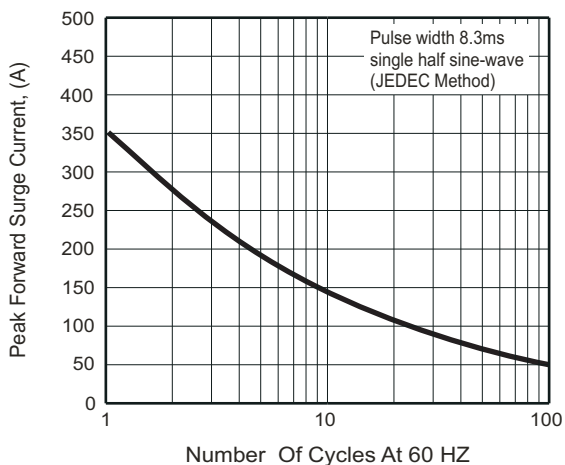
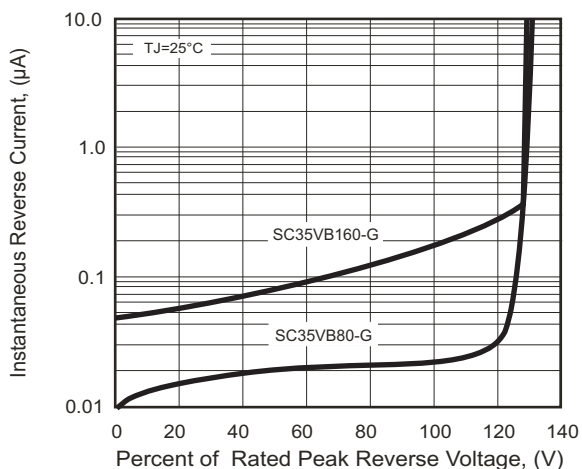
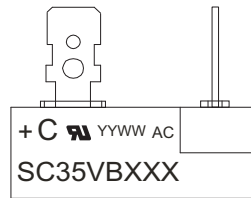


Fig.4 - Typical Reverse Characteristics



Marking Code

Part Number	Marking code
SC35VB80-G	SC35VB80
SC35VB160-G	SC35VB160



C = Compchip Logo

YY WW

↓ ↘ **Weeks of the year**
A.D. year latter two figures

XXX = Product type marking code

Standard Packaging

Case Type	BULK PACK	
	BOX (pcs)	CARTON (pcs)
SCVB	25	100