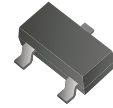


CDSH3-221-G

Voltage: 20 Volts

Current: 100 mA

RoHS Device



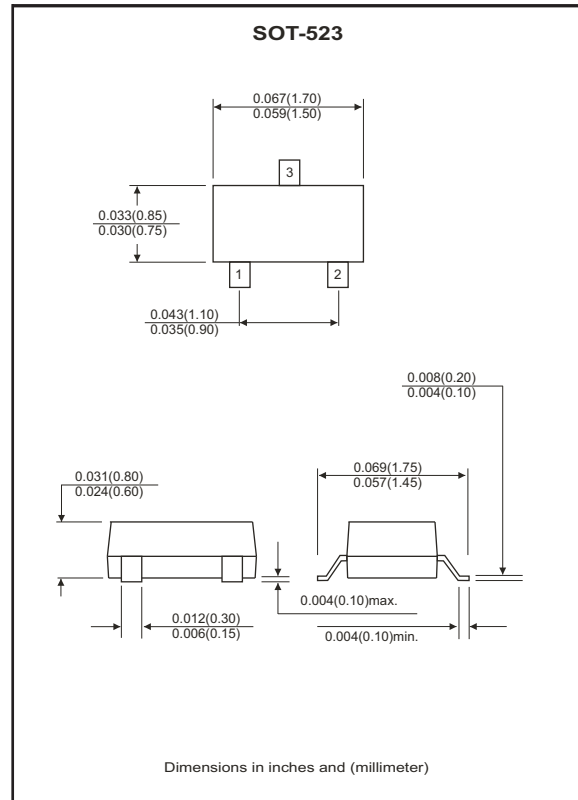
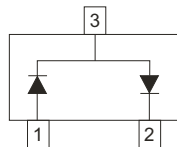
Features

- Design for mounting on small surface.
- High speed switching.
- High mounting capability, strong surge withstand, high reliability.

Mechanical data

- Case: SOT-523, molded plastic.
- Terminals: Solder plated, solderable per MIL-STD-202E, method 208C.
- Weight: 0.002 grams approx.

Circuit Diagram



Maximum Ratings and Electrical Characteristics

(at Ta=25°C unless otherwise noted)

Parameter	Symbol	Conditions	Value	Unit
Peak repetitive reverse voltage	V_{RRM}		20	V
Reverse voltage	V_R		20	V
Average forward current	I_o		100	mA
Peak forward surge current	I_{FSM}	$T_P=1.0\mu S$	300	mA
Power dissipation	P_D		150	mW
Maximum forward voltage	V_F	@ $I_F=10mA$	1.0	V
Maximum reverse current	I_R	@ $V_R=15V$	0.1	μA
Maximum operating junction temperature	T_J		150	°C
Storage temperature	T_{STG}		-55 to +150	°C

Rating and Characteristic Curves (CDSH3-221-G)

Fig.1 - Forward Characteristics

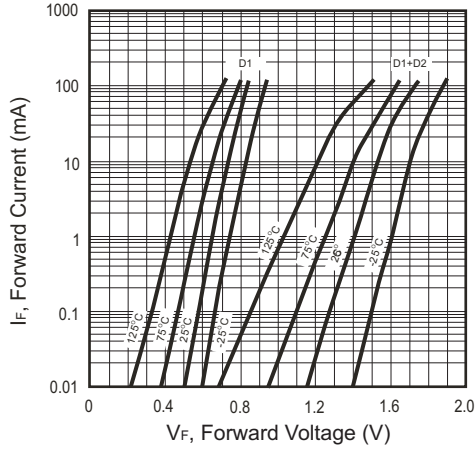


Fig.2 - Forward Characteristics

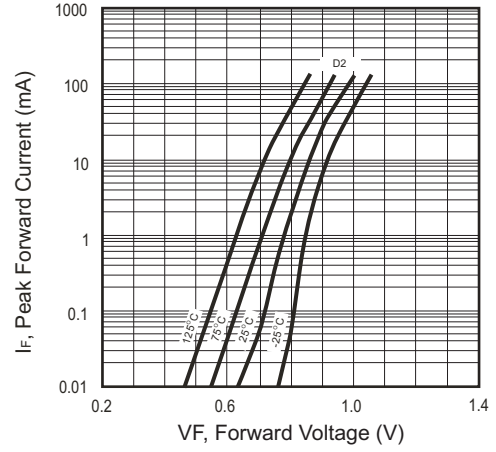


Fig.3 - Capacitance Between Terminals Characteristics

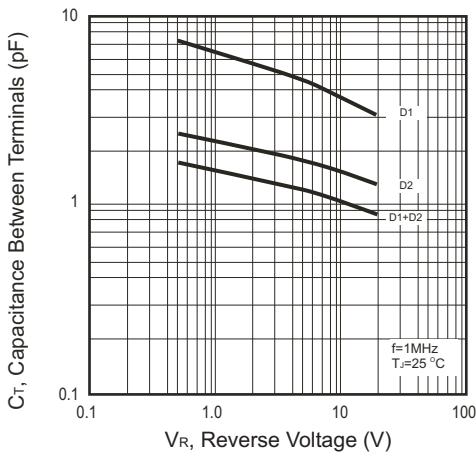


Fig.4 - Reverse Characteristics

