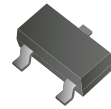


CZRV3-55C2V4-G Thru CZRV3-55C39-G

Voltage: 2.4 to 39 Volts

Power: 200 mWatts

RoHS Device



Features

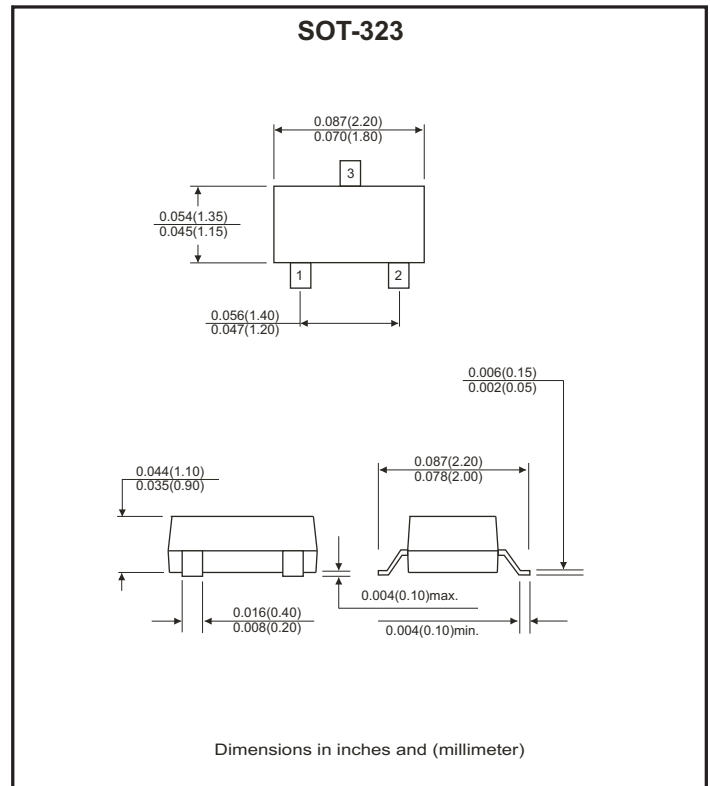
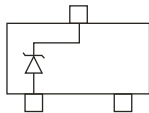
- Planar die construction.
- 200mW power dissipation.
- Ideally suited for automated assembly process.
- Ultra small surface mount package.

Mechanical data

- Case: SOT-323, Molded plastic
- Terminals: Solderable per MIL-STD-202G, method 208
- Polarity: See diagram below
- Mounting position: Any

Marking: see table on page2

Single



Maximum Ratings (TA=25°C, unless otherwise specified)

| Parameter | Symbol | Value | Unit |
|--|-----------------------------------|-------------|------|
| Forward voltage drop at IF=10mA (Note 2) | V _F | 0.9 | V |
| Power dissipation (Note 1) | P _D | 200 | mW |
| Thermal resistance, junction to ambient air | R _{θJA} | 625 | °C/W |
| Operating junction and storage temperature range | T _J , T _{STG} | -65 to +150 | °C |

Note:

1. Valid provided that device terminals are kept at ambient temperature .
2. Tested with pulses, 300µS pulse width, 2% duty cycle.

Electrical Characteristics(Ta = 25°C)

| Part No. | Nominal Zener Voltage | | | Max. Zener Impedence | | | | Max. Reverse Leakage Current | | Temperature Coefficient of Zener Voltage @IZT=5mA (mV/°C) | | Marking Code |
|--------------|-----------------------|-------|-------|----------------------|-----|-----------|------|------------------------------|------|---|------|--------------|
| | VZ @ IZT | | | ZZT @ IZT | | ZZK @ IZK | | IR @ VR | | Min. | Max. | |
| | Nom. | Min. | Max. | ohm | mA | ohm | mA | uA | V | | | |
| CZRV3-55C2V4 | 2.4 | 2.20 | 2.60 | 100 | 5.0 | 600 | 1.00 | 50.0 | 1.0 | -3.5 | 0.0 | KRB |
| CZRV3-55C2V7 | 2.7 | 2.50 | 2.90 | 100 | 5.0 | 600 | 1.00 | 20.0 | 1.0 | -3.5 | 0.0 | KRC |
| CZRV3-55C3V0 | 3.0 | 2.80 | 3.20 | 95 | 5.0 | 600 | 1.00 | 20.0 | 1.0 | -3.5 | 0.0 | KRD |
| CZRV3-55C3V3 | 3.3 | 3.10 | 3.50 | 95 | 5.0 | 600 | 1.00 | 5.0 | 1.0 | -3.5 | 0.0 | KRE |
| CZRV3-55C3V6 | 3.6 | 3.40 | 3.80 | 90 | 5.0 | 600 | 1.00 | 5.0 | 1.0 | -3.5 | 0.0 | KRF |
| CZRV3-55C3V9 | 3.9 | 3.70 | 4.10 | 90 | 5.0 | 600 | 1.00 | 3.0 | 1.0 | -3.5 | 0.0 | KRG |
| CZRV3-55C4V3 | 4.3 | 4.00 | 4.60 | 90 | 5.0 | 600 | 1.00 | 3.0 | 1.0 | -3.5 | 0.0 | KRH |
| CZRV3-55C4V7 | 4.7 | 4.40 | 5.00 | 80 | 5.0 | 600 | 1.00 | 3.0 | 2.0 | -3.5 | 0.2 | KR1 |
| CZRV3-55C5V1 | 5.1 | 4.80 | 5.40 | 60 | 5.0 | 500 | 1.00 | 2.0 | 2.0 | -2.7 | 1.2 | KR2 |
| CZRV3-55C5V6 | 5.6 | 5.20 | 6.00 | 40 | 5.0 | 480 | 1.00 | 1.0 | 2.0 | -2.0 | 2.5 | KR3 |
| CZRV3-55C6V2 | 6.2 | 5.80 | 6.60 | 10 | 5.0 | 400 | 1.00 | 3.0 | 4.0 | 0.4 | 3.7 | KR4 |
| CZRV3-55C6V8 | 6.8 | 6.40 | 7.20 | 15 | 5.0 | 150 | 1.00 | 2.0 | 4.0 | 1.2 | 4.5 | KR5 |
| CZRV3-55C7V5 | 7.5 | 7.00 | 7.90 | 15 | 5.0 | 80 | 1.00 | 1.0 | 5.0 | 2.5 | 5.3 | KR6 |
| CZRV3-55C8v2 | 8.2 | 7.70 | 8.70 | 15 | 5.0 | 80 | 1.00 | 0.7 | 5.0 | 3.2 | 6.2 | KR7 |
| CZRV3-55C9v1 | 9.1 | 8.50 | 9.60 | 15 | 5.0 | 80 | 1.00 | 0.5 | 6.0 | 3.8 | 7.0 | KR8 |
| CZRV3-55C10 | 10.0 | 9.40 | 10.60 | 20 | 5.0 | 100 | 1.00 | 0.2 | 7.0 | 4.5 | 8.0 | KR9 |
| CZRV3-55C11 | 11.0 | 10.40 | 11.60 | 20 | 5.0 | 150 | 1.00 | 0.1 | 8.0 | 5.4 | 9.0 | KP1 |
| CZRV3-55C12 | 12.0 | 11.40 | 12.70 | 25 | 5.0 | 150 | 1.00 | 0.1 | 8.0 | 6.0 | 10.0 | KP2 |
| CZRV3-55C13 | 13.0 | 12.40 | 14.10 | 30 | 5.0 | 150 | 1.00 | 0.1 | 8.0 | 7.0 | 11.0 | KP3 |
| CZRV3-55C15 | 15.0 | 13.80 | 15.60 | 30 | 5.0 | 170 | 1.00 | 0.1 | 10.5 | 9.2 | 13.0 | KP4 |
| CZRV3-55C16 | 16.0 | 15.30 | 17.10 | 40 | 5.0 | 200 | 1.00 | 0.1 | 11.2 | 10.4 | 14.0 | KP5 |
| CZRV3-55C18 | 18.0 | 16.80 | 19.10 | 45 | 5.0 | 200 | 1.00 | 0.1 | 12.6 | 12.4 | 16.0 | KP6 |
| CZRV3-55C20 | 20.0 | 18.80 | 21.20 | 55 | 5.0 | 225 | 1.00 | 0.1 | 14.0 | 14.4 | 18.0 | KP7 |
| CZRV3-55C22 | 22.0 | 20.80 | 23.30 | 55 | 5.0 | 225 | 1.00 | 0.1 | 15.4 | 16.4 | 20.0 | KP8 |
| CZRV3-55C24 | 24.0 | 22.80 | 25.60 | 70 | 5.0 | 250 | 1.00 | 0.1 | 16.8 | 18.4 | 22.0 | KP9 |
| CZRV3-55C27 | 27.0 | 25.10 | 28.90 | 80 | 2.0 | 250 | 0.50 | 0.1 | 18.9 | 21.4 | 25.3 | KPA |
| CZRV3-55C30 | 30.0 | 28.00 | 32.00 | 80 | 2.0 | 300 | 0.50 | 0.1 | 21.0 | 24.4 | 29.4 | KPB |
| CZRV3-55C33 | 33.0 | 31.00 | 35.00 | 80 | 2.0 | 300 | 0.50 | 0.1 | 23.1 | 27.4 | 33.4 | KPC |
| CZRV3-55C36 | 36.0 | 34.00 | 38.00 | 90 | 2.0 | 325 | 0.50 | 0.1 | 25.2 | 30.4 | 37.4 | KPD |
| CZRV3-55C39 | 39.0 | 37.00 | 41.00 | 130 | 2.0 | 350 | 0.50 | 0.1 | 27.3 | 33.4 | 41.2 | KPE |

Ratings and Characteristic Curves(CZRV3-55C2V4-G Thru. CZRV3-55C39-G)

Fig.1 Power Dissipation Derating Curve

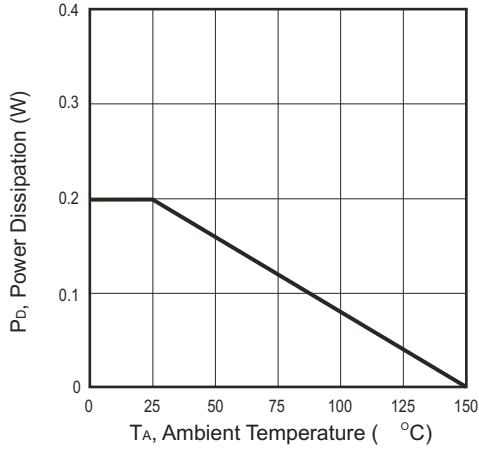


Fig.2 Zener Breakdown Characteristics

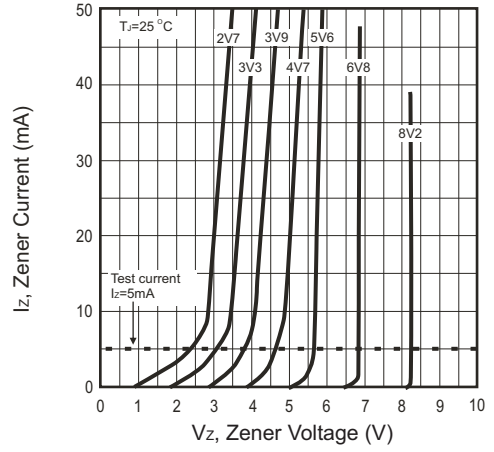


Fig.3 Zener Breakdown Characteristics

