

GSM8943

40V P-Channel Enhancement Mode MOSFET

Product Description

GSM8943, P-Channel enhancement mode MOSFET, uses Advanced Trench Technology to provide excellent $R_{DS(ON)}$, low gate charge.

These devices are particularly suited for low voltage power management, and low in-line power loss are needed in commercial industrial surface mount applications.

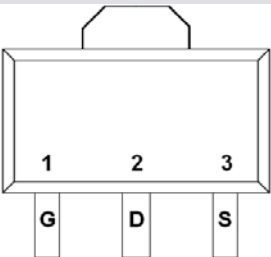
Features

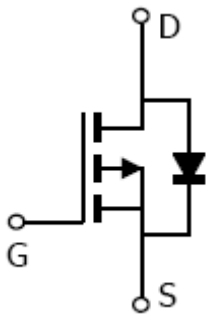
- -40V/-4.6A, $R_{DS(ON)}=43m\Omega@V_{GS}=-10V$
- -40V/-3.6A, $R_{DS(ON)}=58m\Omega@V_{GS}=-4.5V$
- Super high density cell design for extremely low $R_{DS(ON)}$
- SOT-89-3L package design

Applications

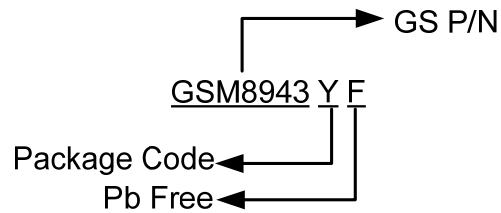
- Motor and Load Control
- LCD TV Inverter & AD/DC Inverter Systems.
- Backlight Inverter for LCD Display
- Load Switch
- CCFL Inverter

Packages & Pin Assignments

GSM8943YF(SOT-89-3L)	
	
Pin	Description
1	Gate
2	Drain
3	Source

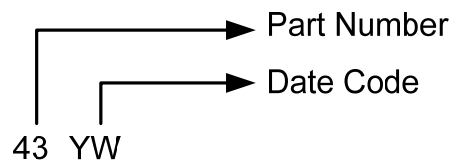


Ordering Information



Part Number	Package	Quantity Reel
GSM8943YF	SOT-89-3L	1000 PCS

Marking Information



Absolute Maximum Ratings

$T_A=25^\circ\text{C}$ Unless otherwise noted

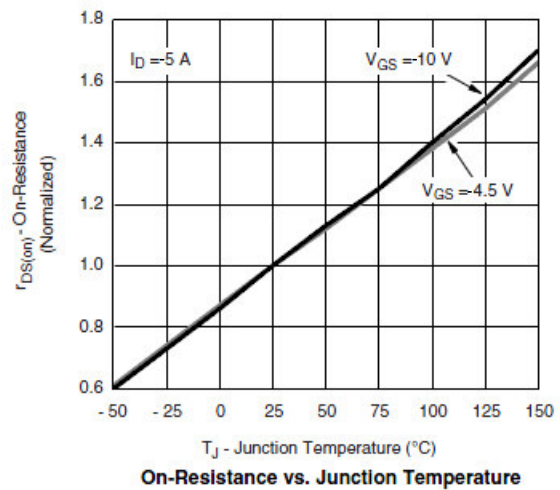
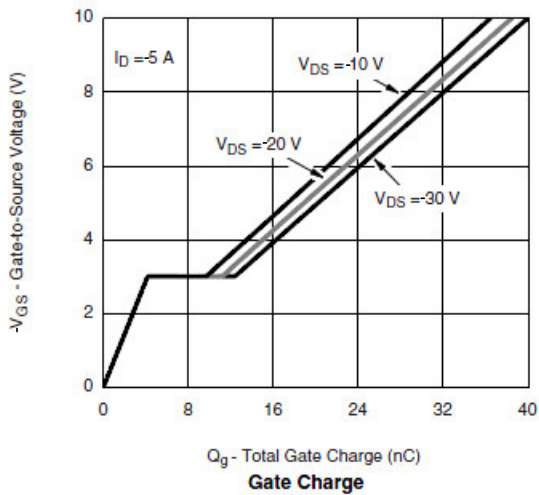
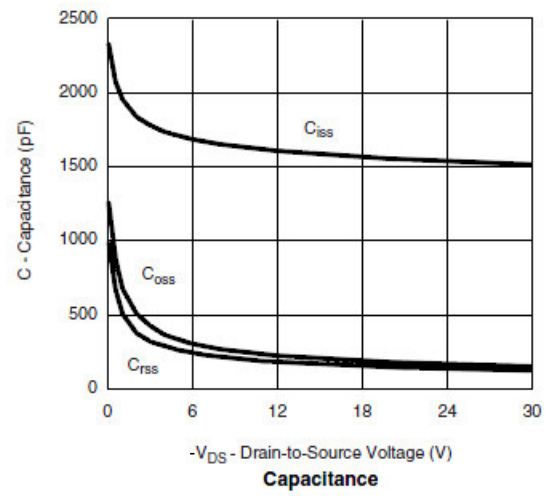
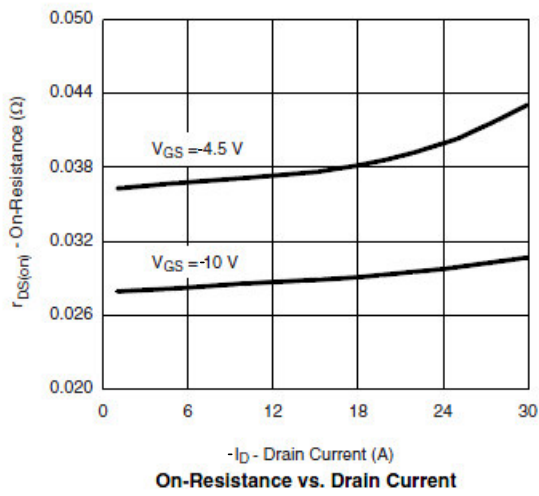
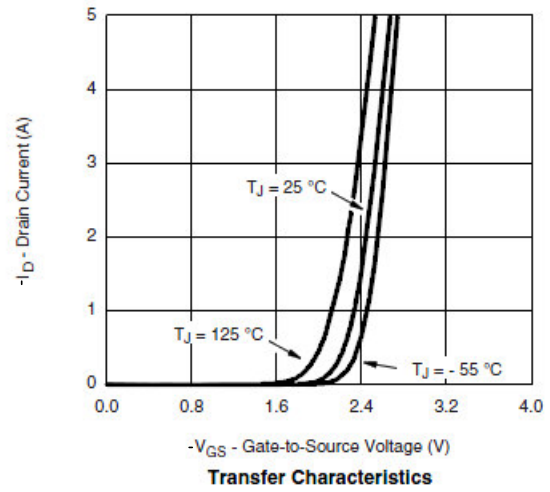
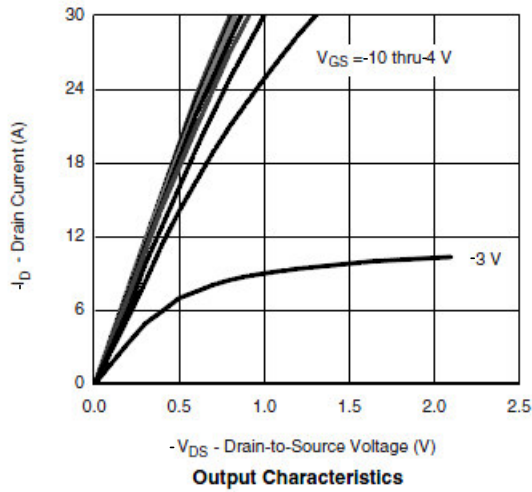
Symbol	Parameter	Typical	Unit	
V_{DSS}	Drain-Source Voltage	-40	V	
V_{GSS}	Gate -Source Voltage	± 20	V	
I_D	Continuous Drain Current($T_J=150^\circ\text{C}$)	$T_A = 25^\circ\text{C}$	-4.6	A
		$T_A = 70^\circ\text{C}$	-3.6	
I_{DM}	Pulsed Drain Current	-10	A	
I_S	Continuous Source Current(Diode Conduction)	-1.6	A	
P_D	Power Dissipation	$T_A = 25^\circ\text{C}$	1.45	W
		$T_A = 70^\circ\text{C}$	0.6	
T_J	Operating Junction Temperature	150	$^\circ\text{C}$	
T_{STG}	Storage Temperature Range	-55/150	$^\circ\text{C}$	
$R_{\theta JA}$	Thermal Resistance-Junction to Ambient	120	$^\circ\text{C/W}$	

Electrical Characteristics

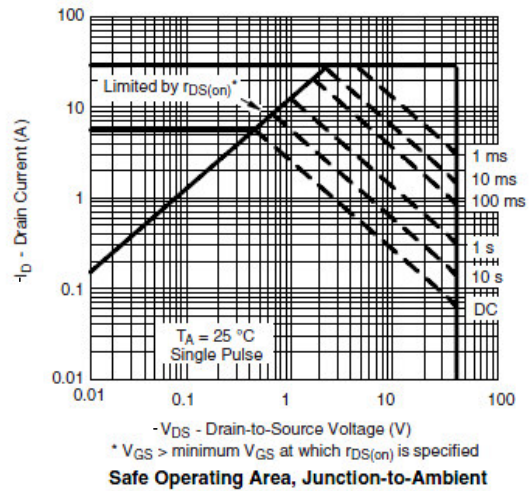
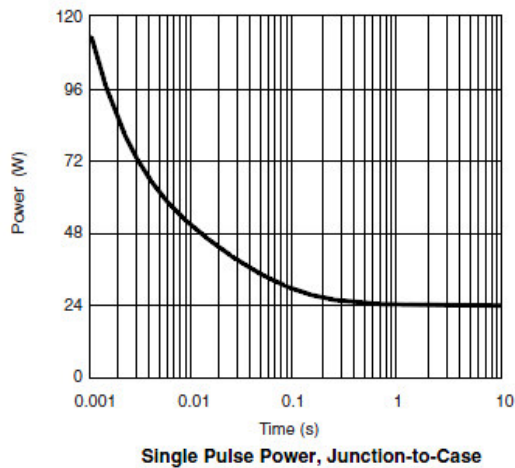
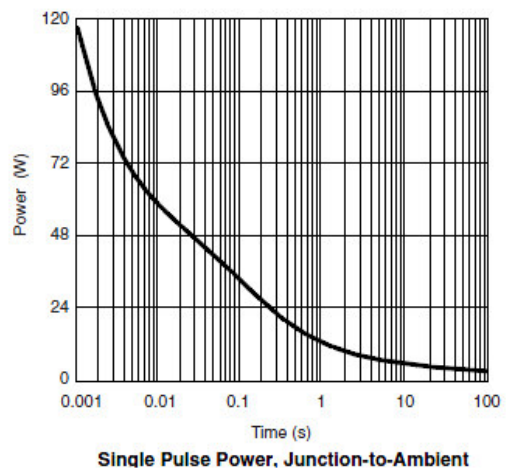
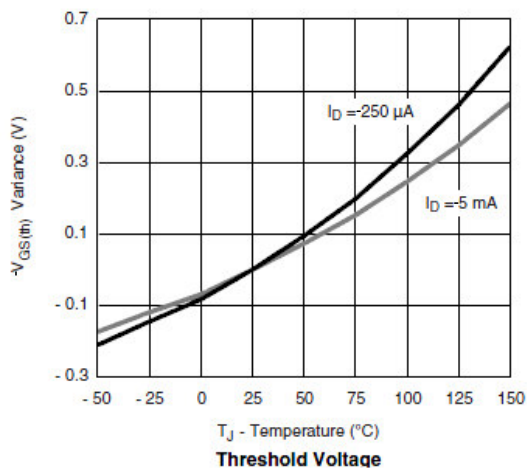
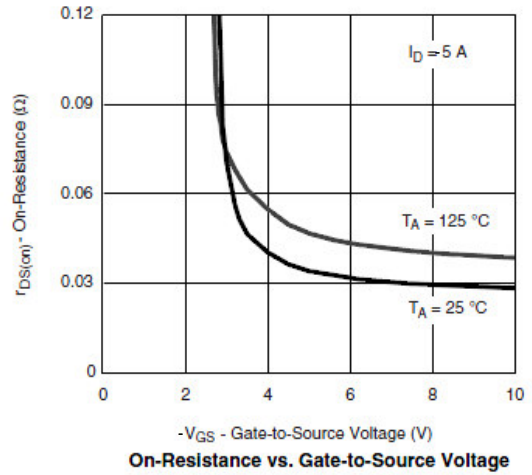
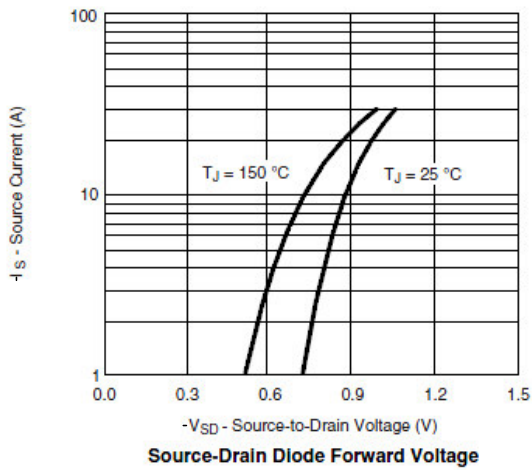
T_A=25°C Unless otherwise noted

Symbol	Parameter	Conditions	Min	Typ	Max	Unit
Static						
V _{(BR)DSS}	Drain-Source Breakdown Voltage	V _{GS} =0V, I _D = -250uA	-40			V
V _{GS(th)}	Gate Threshold Voltage	V _{DS} =V _{GS} , I _D = -250uA	-1.0		-3.0	
I _{GSS}	Gate Leakage Current	V _{DS} =0V, V _{GS} = ±20V			±100	nA
I _{DSS}	Zero Gate Voltage Drain Current	V _{DS} = -40V, V _{GS} =0V			-1	uA
		V _{DS} =-40V, V _{GS} =0V, T _J =85°C			-20	
I _{D(on)}	On-State Drain Current	V _{DS} ≤ -5V, V _{GS} = -10V	-20			A
R _{DS(on)}	Drain-Source On-Resistance	V _{GS} = -10V, I _D = -4.6A		36	43	mΩ
		V _{GS} = -4.5V, I _D = -3.6A		48	58	
g _{FS}	Forward Transconductance	V _{DS} = -15V, I _D = -5A		20		S
V _{SD}	Diode Forward Voltage	I _S = -2A, V _{GS} =0V		-0.8	-1.2	V
Dynamic						
Q _q	Total Gate Charge	V _{DS} =-20V, V _{GS} =-4.5V, I _D =-3.0A		13	20	nC
Q _{gs}	Gate-Source Charge			4.5		
Q _{gd}	Gate-Drain Charge			6.5		
C _{iss}	Input Capacitance	V _{DS} =-20V, V _{GS} =0V, f=1MHz		1100		pF
C _{oss}	Output Capacitance			145		
C _{rss}	Reverse Transfer Capacitance			115		
t _{d(on)}	Turn-On Time	V _{DD} =-20V, R _L =4Ω, I _D =-3.0A, V _{GEN} =-4.5V, R _G =1Ω		40	80	ns
t _r				55	100	
t _{d(off)}	Turn-Off Time			30	60	
t _f				12	20	

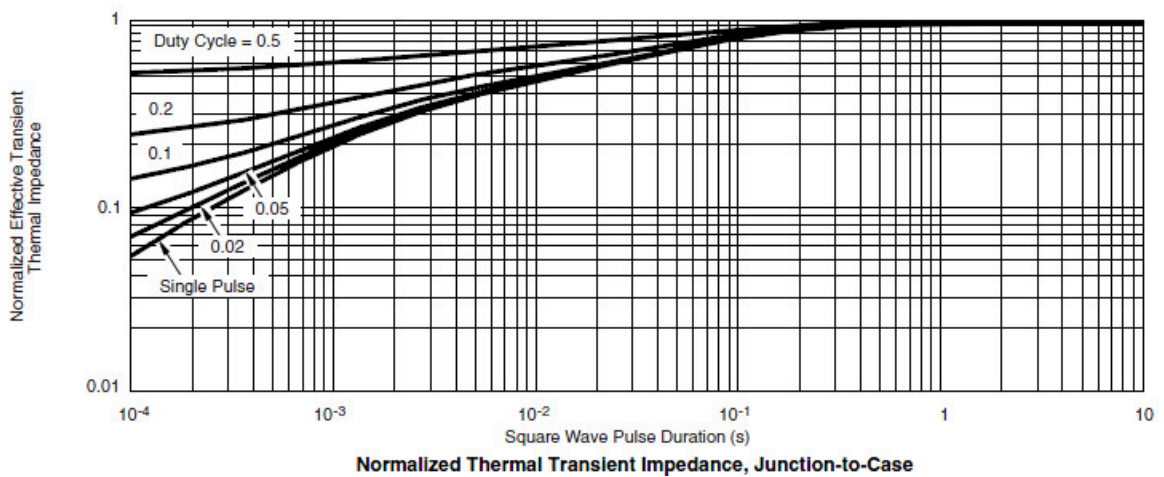
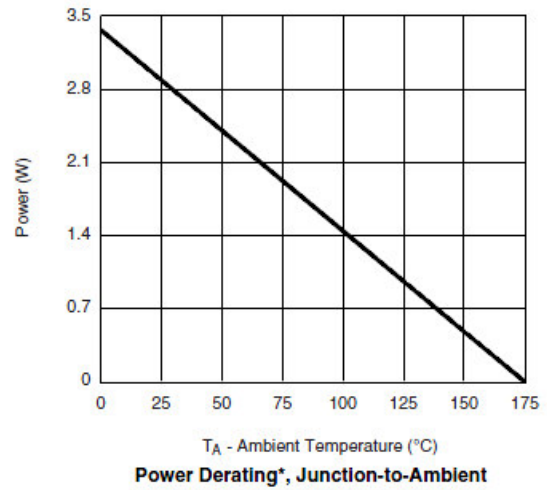
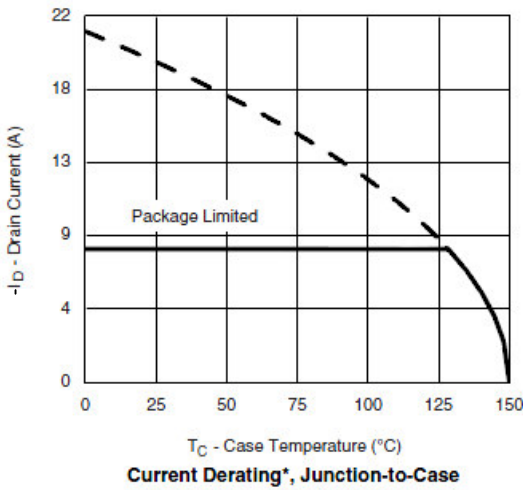
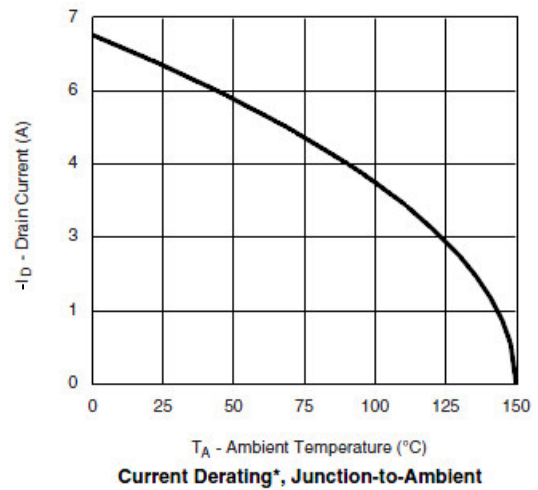
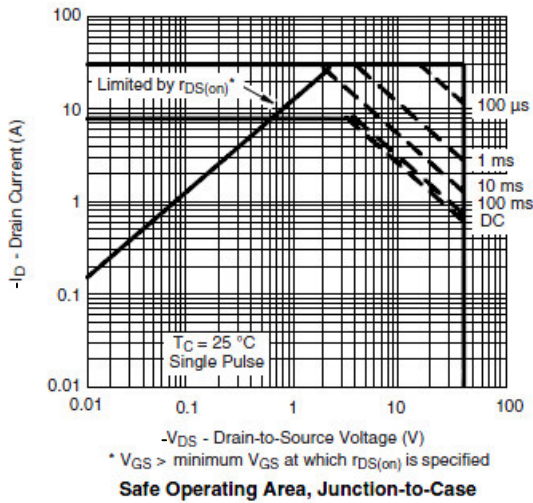
Typical Performance Characteristics



Typical Performance Characteristics (continue)

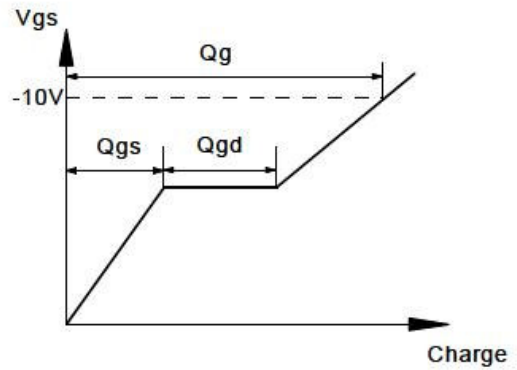
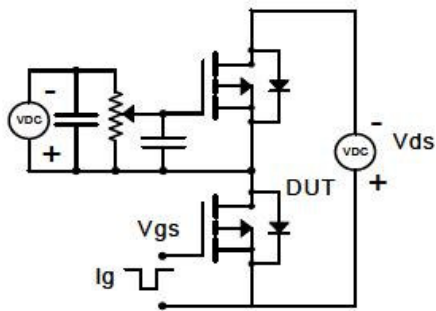


Typical Performance Characteristics (continue)

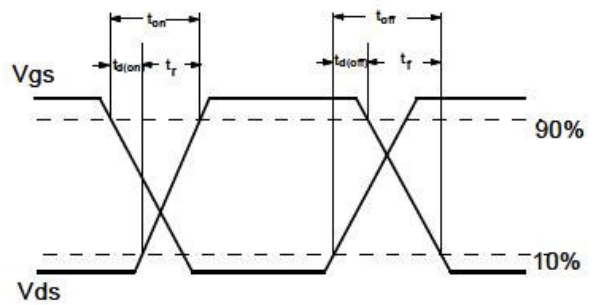
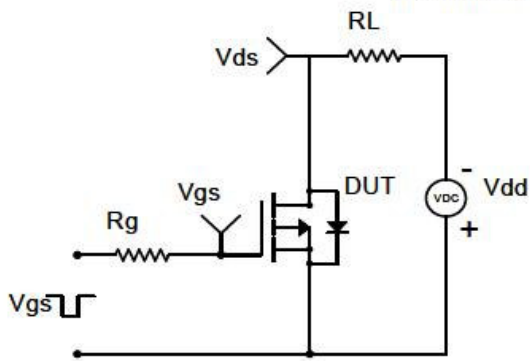


Typical Characteristics

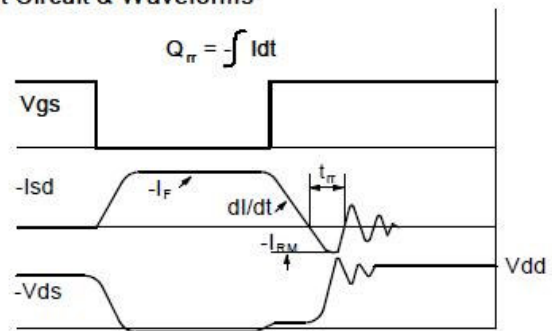
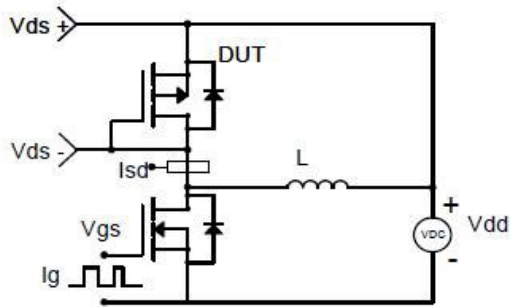
Gate Charge Test Circuit & Waveform



Resistive Switching Test Circuit & Waveforms

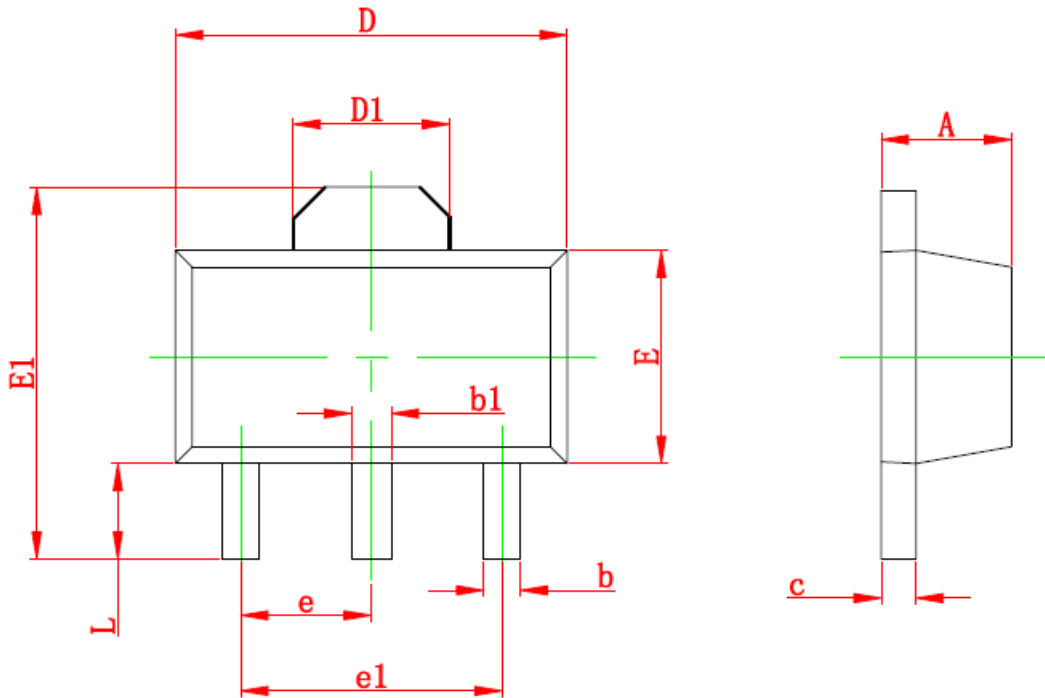


Diode Recovery Test Circuit & Waveforms



Package Dimension

SOT-89-3L







Dimensions				
Symbol	Millimeters		Inches	
	Min	Max	Min	Max
A	1.400	1.600	0.055	0.063
b	0.320	0.520	0.013	0.197
b1	0.400	0.580	0.016	0.023
c	0.350	0.440	0.014	0.017
D	4.400	4.600	0.173	0.181
D1	1.550 (REF)		0.061 (REF)	
E	2.30	2.600	0.091	0.102
E1	3.940	4.250	0.155	0.167
e	1.50 (TYP)		0.060 (TYP)	
e1	3.00 (TYP)		0.118 (TYP)	
L	0.900 (TYP)	1.200	0.035	0.047



NOTICE

Information furnished is believed to be accurate and reliable. However Globaltech Semiconductor assumes no responsibility for the consequences of use of such information nor for any infringement of patents or other rights of third parties, which may result from its use. No license is granted by implication or otherwise under any patent or patent rights of Globaltech Semiconductor. Specifications mentioned in this publication are subject to change without notice. This publication supersedes and replaces all information without express written approval of Globaltech Semiconductor.

CONTACT US

GS Headquarter	
	4F.,No.43-1,Lane11,Sec.6,Minquan E.Rd NeiHu District Taipei City 114, Taiwan (R.O.C)
	886-2-2657-9980
	886-2-2657-3630
	sales_twn@gs-power.com

Wu-Xi Branch	
	No.21 Changjiang Rd., WND, Wuxi, Jiangsu, China (INFO. & TECH. Science Park Building A 210 Room)
	86-510-85217051
	86-510-85211238
	sales_cn@gs-power.com

RD Division	
	824 Bolton Drive Milpitas. CA. 95035
	1-408-457-0587