

C1Z100B THRU C1Z330B

SILICON ZENER DIODE
1 WATT, 100 THRU 330 VOLTS

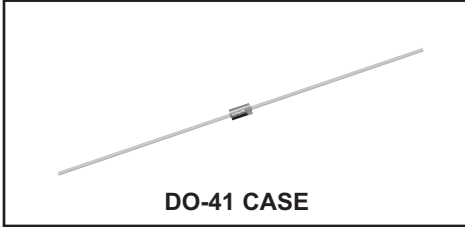


www.centrasemi.com

DESCRIPTION:

The CENTRAL SEMICONDUCTOR C1Z100B series silicon Zener diode is a high quality, epoxy molded voltage regulator designed for use in industrial, commercial, entertainment, and computer applications.

MARKING: FULL PART NUMBER



DO-41 CASE

MAXIMUM RATINGS:

Power Dissipation ($T_A=50^\circ\text{C}$)
Operating and Storage Junction Temperature
 V_Z Tolerance: Part number with "B" suffix
 V_Z Tolerance: Part number with "C" suffix
 V_Z Tolerance: Part number with "D" suffix

SYMBOL

P_D
 T_J, T_{stg}
 ± 5
 ± 2
 ± 1

UNITS

W
 $^\circ\text{C}$
%
%
%

ELECTRICAL CHARACTERISTICS: ($T_A=25^\circ\text{C}$) $V_F=1.0\text{V MAX @ } I_F=500\text{mA}$ (for all types)

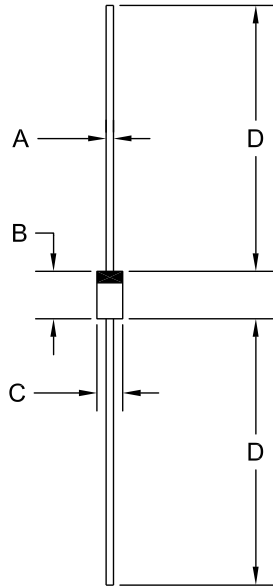
TYPE	ZENER VOLTAGE $V_Z @ I_{ZT}$			TEST CURRENT	MAXIMUM ZENER IMPEDANCE			MAXIMUM REVERSE CURRENT		MAXIMUM DC CURRENT
	MIN	NOM	MAX	I_{ZT}	$Z_{ZT} @ I_{ZT}$	$Z_{ZK} @ I_{ZK}$	$I_R @ V_R$	$I_R @ V_R$	I_{ZM}	
	V	V	V	mA	k Ω	k Ω	μA	V	mA	
C1Z100B	95.0	100	105.0	2.5	0.35	3.0	0.25	5.0	76.0	10
C1Z110B	104.5	110	115.5	2.3	0.45	4.0	0.25	5.0	83.6	9.1
C1Z120B	114.0	120	126.0	2.0	0.55	4.5	0.25	5.0	91.2	8.3
C1Z130B	123.5	130	136.5	1.9	0.70	5.0	0.25	5.0	98.8	7.7
C1Z150B	142.5	150	157.5	1.7	1.0	6.0	0.25	5.0	114.0	6.7
C1Z160B	152.0	160	168.0	1.6	1.1	6.5	0.25	5.0	121.6	6.3
C1Z180B	171.0	180	189.0	1.4	1.2	7.0	0.25	5.0	136.8	5.6
C1Z200B	190.0	200	210.0	1.2	1.5	8.0	0.25	5.0	152.0	5.0
C1Z300B	285.0	300	315.0	0.85	5.0	9.0	0.25	5.0	240.0	3.3
C1Z330B	313.5	330	346.5	0.75	5.0	9.0	0.25	5.0	260.0	3.0

R2 (21-June 2012)

C1Z100B THRU C1Z330B
 SILICON ZENER DIODE
 1 WATT, 100 THRU 330 VOLTS



DO-41 CASE - MECHANICAL OUTLINE



SYMBOL	INCHES		MILLIMETERS	
	MIN	MAX	MIN	MAX
A	0.028	0.034	0.71	0.86
B	0.160	0.205	4.06	5.21
C	0.080	0.107	2.03	2.72
D	1.000	-	25.40	-

DO-41 (REV: R1)

R1

R2 (21-June 2012)