

## Anode Shorted Gate Turn-Off Thyristor Type G4000EC450

### Absolute Maximum Ratings

|               | VOLTAGE RATINGS                                 | MAXIMUM LIMITS | UNITS |
|---------------|---|----------------|-------|
| $V_{DRM}$     | Repetitive peak off-state voltage, (note 1)     | 4500           | V     |
| $V_{DSM}$     | Non-repetitive peak off-state voltage, (note 1) | 4500           | V     |
| $V_{RRM}$     | Repetitive peak reverse voltage                 | 18             | V     |
| $V_{DC-link}$ | Maximum continuous DC-link voltage              | 2800           | V     |

|              | RATINGS   | MAXIMUM LIMITS     | UNITS       |
|--------------|---|--------------------|-------------|
| $I_{TGQM}$   | Maximum peak turn-off current, (note 2)                 | 4000               | A           |
| $L_s$        | Snubber loop inductance, $I_{TM}=I_{TGQM}$ , (note 2)   | 300                | nH          |
| $I_{T(AV)M}$ | Mean on-state current, $T_{sink}=55^{\circ}C$ (note 3)  | 1270               | A           |
| $I_{T(RMS)}$ | Nominal RMS on-state current, $25^{\circ}C$ (note 3)    | 2540               | A           |
| $I_{TSM}$    | Peak non-repetitive surge current $t_p=10ms$ , (Note 4) | 25                 | kA          |
| $I_{TSM2}$   | Peak non-repetitive surge current $t_p=2ms$ , (Note 4)  | 32                 | kA          |
| $I^2t$       | $I^2t$ capacity for fusing $t_p=10ms$                   | $3.13 \times 10^6$ | $A^2s$      |
| $di/dt_{cr}$ | Critical rate of rise of on-state current, (note 5)     | 500                | $A/\mu s$   |
| $V_{RGM}$    | Peak reverse gate voltage (note 6).                     | 18                 | V           |
| $T_{j op}$   | Operating temperature range                             | -40 to +125        | $^{\circ}C$ |
| $T_{stg}$    | Storage temperature range                               | -40 to +125        | $^{\circ}C$ |

Notes: -

1)  $V_{GK} \leq -2V$ olts.

2)  $T_j = 125^{\circ}C$ ,  $V_D = 67\%V_{DM}$ ,  $V_{DM} < V_{DRM}$ ,  $di_{GQ}/dt = 40A/\mu s$ ,  $C_S = 6\mu F$ .

3) Double-side cooled, single phase; 50Hz,  $180^{\circ}$  half-sinewave.

4)  $T_{j(initial)} = 125^{\circ}C$ , single phase,  $180^{\circ}$  sinewave, re-applied voltage  $V_D = V_R \leq 10V$ .

5)  $I_T = 4000A$  repetitive,  $I_{GM} = 50A$ ,  $di_{GM}/dt = 40A/\mu s$ , for higher  $di/dt$  please consult the factory.

6) May exceed this value during turn-off avalanche period.

**Characteristics**

|              | Parameter                                  | MIN  | TYP | MAX   | TEST CONDITIONS   | UNITS      |
|--------------|--|------|-----|-------|---|------------|
| $V_{TM}$     | Maximum peak on-state voltage              | -    | -   | 4.40  | $I_T=4000A$   | V          |
| $I_L$        | Latching current                           | -    | -   | 100   | $T_j=25^\circ C$  | A          |
| $I_H$        | Holding current.                           | -    | -   | 100   | $T_j=25^\circ C$  | A          |
| $dv/dt_{cr}$ | Critical rate of rise of off-state voltage | 1000 | -   | -     | $V_D=3000V, V_G=0V/R_G=0\Omega$   | V/ $\mu s$ |
| $I_{DRM}$    | Peak off state current                     | -    | -   | 100   | Rated $V_{DRM}, V_{GR}\leq -2V$   | mA         |
| $I_{RRM}$    | Peak reverse current                       | -    | -   | 50    | Rated $V_{RRM}, R_{GK}=\infty$  | mA         |
| $I_{GKM}$    | Peak negative gate leakage current         | -    | -   | 50    | $V_{GR}=-16V$   | mA         |
| $V_{GT}$     | Gate trigger voltage                       | -    | -   | 1.2   | $T_j=25^\circ C, V_D=24V, R_A=0.1\Omega$  | V          |
| $I_{GT}$     | Gate trigger current                       | -    | -   | 4.0   | $T_j=25^\circ C, V_D=24V, R_A=0.1\Omega$  | A          |
| $t_d$        | Delay time                                 | -    | 2.5 | -     |   | $\mu s$    |
| $t_r$        | Rise time                                  | -    | 5.0 | -     | $V_D=50\%V_{DRM}, I_{TQG}=4000A, di_T/dt=300A/\mu s,$<br>$I_{GM}=50A, di_G/dt=40A/\mu s, C_S=6\mu F$  | $\mu s$    |
| $t_{gt}$     | Turn-on time                               | -    | 7.5 | -     |   | $\mu s$    |
| $E_{ON}$     | Turn-on energy per pulse                   | -    | 3.3 | -     |   | J          |
| $t_s$        | Storage time                               | -    | 25  | -     |   | $\mu s$    |
| $t_f$        | Fall time                                  | -    | 3.0 | -     |   | $\mu s$    |
| $t_{gq}$     | Turn-off time                              | -    | 28  | -     | $V_D=50\%V_{DRM}, V_{DM}=V_{DRM}, I_{TQG}=I_{TGQM},$<br>$di_{GQ}/dt=40A/\mu s, C_S=6\mu F, L_S=300nH$ | $\mu s$    |
| $E_{OFF}$    | Turn-off energy per pulse                  | -    | 10  | -     |   | J          |
| $I_{GQM}$    | Peak turn-off gate current                 | -    | -   | 1000  |   | A          |
| $Q_{GQ}$     | Turn-off gate charge                       | -    | 18  | -     |   | $\mu C$    |
| $R_{thJK}$   | Thermal resistance junction to sink        | -    | -   | 0.015 | Double side cooled  | K/W        |
|              |  | -    | -   | 0.026 | Anode side cooled   | K/W        |
|              |  | -    | -   | 0.031 | Cathode side cooled   | K/W        |
| F            | Mounting force                             | 36   | -   | 44    | (see note 2)  | kN         |
| $W_t$        | Weight                                     | -    | 1.5 | -     |   | kg         |

Notes: -

- 1) Unless otherwise indicated  $T_j=125^\circ C$ .
- 2) For other clamping forces, consult factory.

**Notes on ratings and characteristics.**

1. Maximum Ratings.

1.1 Off-state voltage ratings.

Unless otherwise indicated, all off-state voltage ratings are given for gate conditions as diagram 1. For other gate conditions see the curves of figure 5. It should be noted that  $V_{DRM}$  is the repeatable peak voltage which may be applied to the device and does not relate to a DC operating condition. While not given in the ratings,  $V_{DC}$  should ideally be limited to 55%  $V_{DRM}$  in this product.

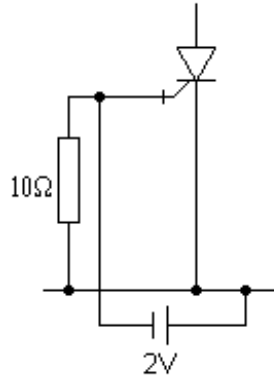


Diagram 1.

1.2 Reverse voltage rating.

All devices in this series have a minimum  $V_{RRM}$  of 18 Volts.

1.3 Peak turn-off current.

The figure given in maximum ratings is the highest value for normal operation of the device under conditions given in note 2 of ratings. For other combinations of  $I_{TGQ}$  and  $C_s$  see the curve in figure 10. The curves are effective over the normal operating range of the device and assume a snubber circuit equivalent to that given in diagram 2. If a more complex snubber, such as an Underland circuit, is employed then the equivalent  $C_s$  should be used and  $L_s < 0.2\mu H$  must be ensured for the curves to be applied.

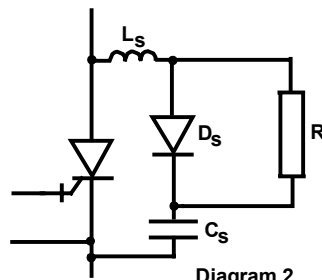


Diagram 2.

1.4 R.M.S and average current.

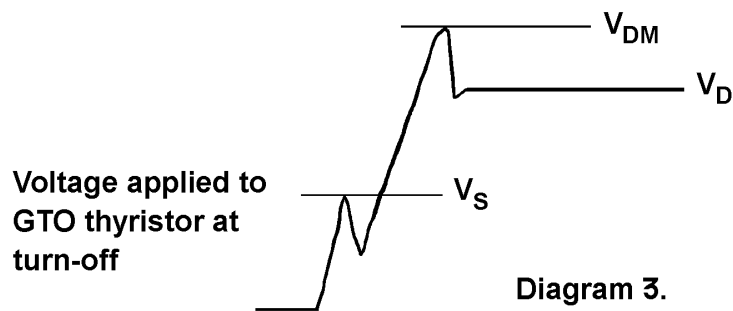
Measured as for standard thyristor conditions, double side cooled, single phase, 50Hz, 180° half-sinewave. These are included as a guide to compare the alternative types of GTO thyristors available, values can not be applied to practical applications, as they do not include switching losses.

1.5 Surge rating and  $I^2t$ .

Ratings are for half-sinewave, peak value against duration is given in the curve of figure 2.

1.6 Snubber loop inductance.

Use of GTO thyristors with snubber loop inductance,  $L_s < 0.2\mu H$  implies no dangerous  $V_s$  voltages (see diagrams 2 & 3) can be applied, provided the other conditions given in note 1.3 are enforced. Alternatively  $V_s$  should be limited to 800 Volts to avoid possible device failure.



#### 1.7 Critical rate of rise of on-state current

The value given is the maximum repetitive rating, but does not imply any specific operating condition. The high turn-on losses associated with limit  $di/dt$  would not allow for practical duty cycle at this maximum condition. For special pulse applications, such as crowbars and pulse power supplies, a much higher  $di/dt$  is possible. Where the device is required to operate with infrequent high current pulses, with natural commutation (i.e. not gate turn-off), then  $di/dt > 10\text{kA}/\mu\text{s}$  is possible. For this type of operation individual specific evaluation is required.

#### 1.8 Gate ratings

The absolute conditions above which the gate may be damaged. It is permitted to allow  $V_{GK(AV)}$  during turn-off to exceed  $V_{RGM}$  which is the implied DC condition.

#### 1.9 Minimum permissible off time.

This time relates specifically to re-firing of device (see also note on gate-off time 2.7). The value given in the ratings applies only to operating conditions of ratings note 2.

#### 1.10 Minimum permissible on-time.

Figure is given for minimum time to allow complete conduction of all the GTO thyristor islands. Where a simple snubber, of the form given in diagram 1. (or any other non-energy recovery type which discharges through the GTO at turn-on) the actual minimum on-time will usually be fixed by the snubber circuit time constant, which must be allowed to fully discharge before the GTO thyristor is turned off. If the anode circuit has  $di/dt < 10\text{A}/\mu\text{s}$  then the minimum on-time should be increased, the actual value will depend upon the  $di/dt$  and operating conditions (each case needs to be assessed on an individual basis).

2 Characteristics

2.1 Instantaneous on-state voltage

Measured using a 500µs square pulse, see also the curves of figure 1 for other values of  $I_{TM}$ .

2.2 Latching and holding current

These are considered to be approximately equal and only the latching current is measured, type test only as outlined below. The test circuit and wave diagrams are given in diagram 4. The anode current is monitored on an oscilloscope while  $V_D$  is increased, until the current is seen to flow during the un-gated period between the end of  $I_G$  and the application of reverse gate voltage. Test frequency is 100Hz with  $I_{GM}$  &  $I_G$  as for  $t_d$  of characteristic data.

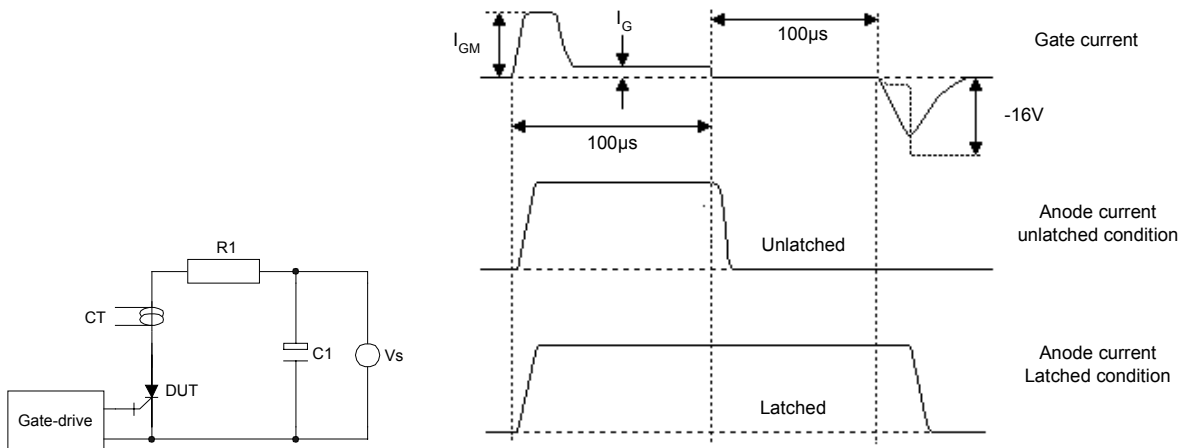


Diagram 4, Latching test circuit and waveforms.

2.3 Critical dv/dt

The gate conditions are the same as for 1.1, this characteristic is for off-state only and does not relate to dv/dt at turn-off. The measurement, type test only, is conducted using the exponential ramp method as shown in diagram 5. It should be noted that GTO thyristors have a poor static dv/dt capability if the gate is open circuit or  $R_{GK}$  is high impedance. Typical values:  $-dv/dt < 100V/\mu s$  for  $R_{GK} > 10\Omega$ .

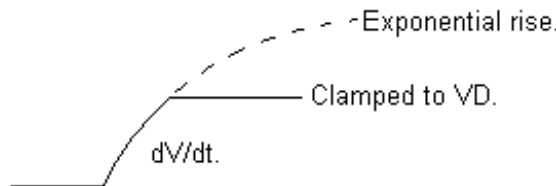


Diagram 5, Definition of dv/dt.

2.4 Off-state leakage.

For  $I_{DRM}$  &  $I_{RRM}$  see notes 1.1 & 1.2 for gate leakage  $I_{GK}$ , the off-state gate circuit is required to sink this leakage and still maintain minimum of -2 Volts. See diagram 6.

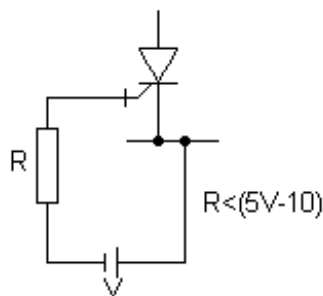


Diagram 6.

2.5 Gate trigger characteristics.

These are measured by slowly ramping up the gate current and monitoring the transition of anode current and voltage (see diagram 7). Maximum and typical data of gate trigger current, for the full junction temperature range, is given in the curves of figure 6. Only typical figures are given for gate trigger voltage, however, the curves of figure 1 give the range of gate forward characteristics, for the full allowable junction temperature range. The curves of figures 1 & 6 should be used in conjunction, when considering forward gate drive circuit requirement. The gate drive requirements should always be calculated for lowest junction temperature start-up condition.

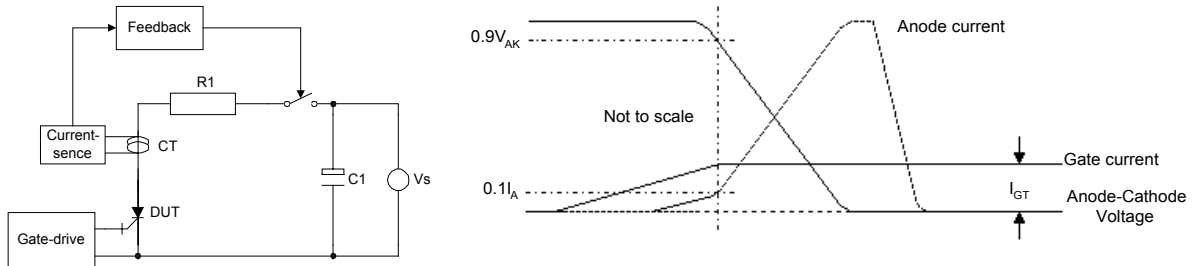


Diagram 7, Gate trigger circuit and waveforms.

2.6 Turn-on characteristics

The basic circuit used for turn-on tests is given in diagram 8. The test is initiated by establishing a circulating current in  $T_x$ , resulting in  $V_D$  appearing across  $C_c/L_c$ . When the test device is fired  $C_c/L_c$  discharges through DUT and commutates  $T_x$  off, as pulse from  $C_c/L_c$  decays the constant current source continues to supply a fixed current to DUT. Changing value of  $C_c$  &  $L_c$  allows adjustment of  $I_{TM}$  and  $di/dt$  respectively,  $V_D$  and  $i$  are also adjustable.

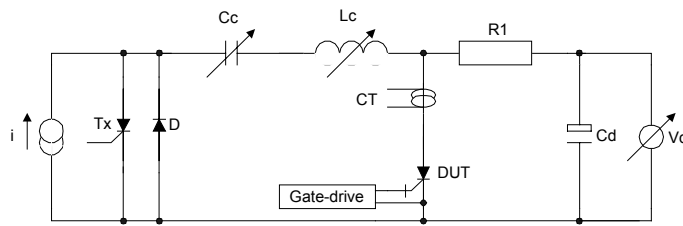


Diagram 8, Turn-on test circuit of FT40.

The definitions of turn-on parameters used in the characteristic data are given in diagram 9. The gate circuit conditions  $I_{GM}$  &  $I_G$  are fully adjustable,  $I_{GM}$  duration 30µs.

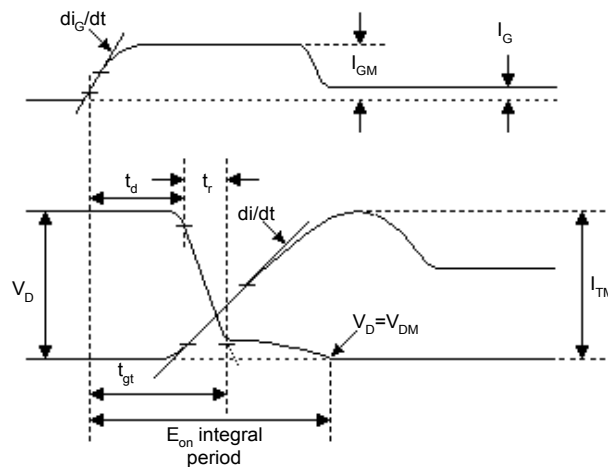


Diagram 9, Turn-on wave-diagrams.

In addition to the turn-on time figures given in the characteristics data, the curves of figure 9 give the relationship of  $t_{gt}$  to  $di/dt$  and  $I_{GM}$ . The data in the curves of figure 7 gives the turn-on losses both with and without snubber discharge, a snubber of the form given in diagram 2 is assumed. Only typical losses are given due to the large number of variables which effect  $E_{on}$ . It is unlikely that all negative aspects would appear in any one application, so typical figures can be considered as worst case. Where the turn-on loss is higher than the figure given it will in most cases be compensated by reduced turn-off losses, as variations in processing inversely effect many parameters. For a worst case device, which would also have the lowest turn-off losses,  $E_{on}$  would be 1.5x values given in the curves of figures. Turn-on losses are measured over the integral period specified below:-

$$E_{on} = \int_0^{10\mu s} i v dt$$

The turn-on loss can be sub-divided into two component parts, firstly that associated with  $t_{gt}$  and secondly the contribution of the voltage tail. For this series of devices  $t_{gt}$  contributes 60% and the voltage tail 40% (These figures are approximate and are influenced by several second order effects). The loss during  $t_{gt}$  is greatly affected by gate current and as with turn-on time (figure 9), it can be reduced by increasing  $I_{GM}$ . The turn-on loss associated with the voltage tail is not effected by the gate conditions and can only be reduced by limiting  $di/dt$ , where appropriate a turn-on snubber should be used. In applications where the snubber is discharged through the GTO thyristor at turn-on, selection of discharge resistor will effect  $E_{on}$ . The curves of figure 8 are given for a snubber as shown in diagram 2, with  $R=5\Omega$ , this is the lowest recommended value giving the highest  $E_{on}$ , higher values will reduce  $E_{on}$ .

2.7 Turn-off characteristics

The basic circuit used for the turn-off test is given in diagram 10. Prior to the negative gate pulse being applied constant current, equivalent to  $I_{TGO}$ , is established in the DUT. The switch  $S_x$  is opened just before DUT is gated off with a reverse gate pulse as specified in the characteristic/data curves. After the period  $t_{gt}$  voltage rises across the DUT,  $dv/dt$  being limited by the snubber circuit. Voltage will continue to rise across DUT until  $D_c$  turns-on at a voltage set by the active clamp  $C_c$ , the voltage will be held at this value until energy stored in  $L_x$  is depleted, after which it will fall to  $V_{DC}$ . The value of  $L_x$  is selected to give required  $V_D$  Over the full tail time period. The overshoot voltage  $V_{DM}$  is derived from  $L_c$  and forward voltage characteristic of  $D_c$ , typically  $V_{DM}=120\%V_D$  to  $150\%V_D$  depending on test settings. The gate is held reverse biased through a low impedance circuit until the tail current is fully extinguished.

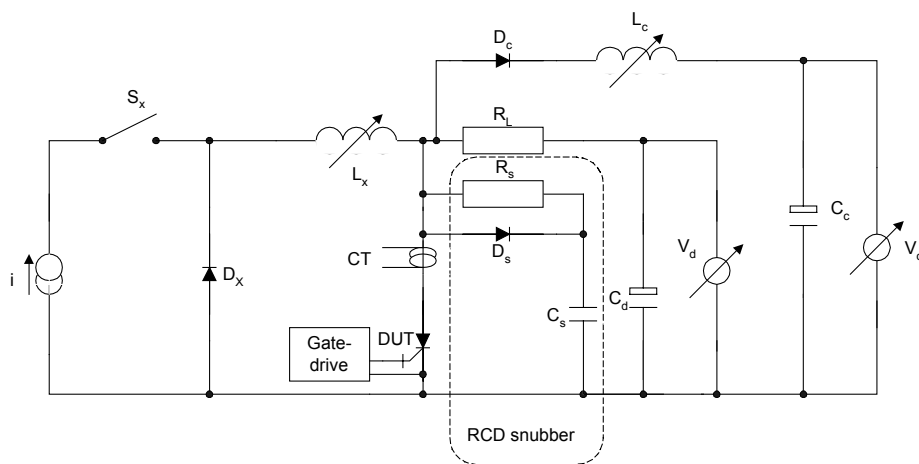


Diagram 10, Turn-off test circuit.

The definitions of turn-off parameters used in the characteristic data are given in diagram 11.

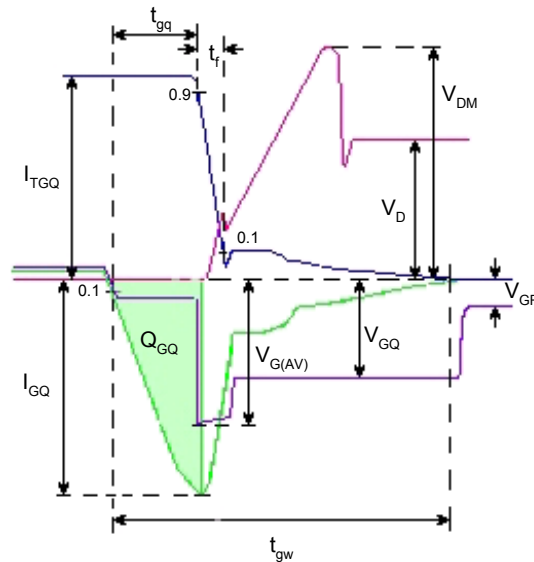
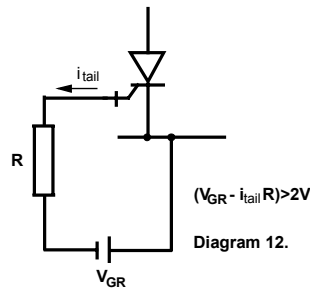


Diagram 11, Turn-off parameter definitions.

In addition to the turn-off figures given in characteristic data, the curves of figures 8, 9 & 10 give the relationship of  $I_{GQ}$ ,  $Q_{GQ}$  and  $t_{gq}$  to turn-off current ( $I_{TGQ}$ ) and  $di_{GQ}/dt$ . Only typical values of  $I_{GQ}$  are given due to a great dependence upon the gate circuit impedance, which is a function of gate drive design not the device. The  $t_{gq}$  is also, to a lesser extent, affected by circuit impedance and as such the maximum figures given in data assume a good low impedance circuit design. The minimum off time to re-fire the device is distinct from  $t_{gw}$ , the gate off time given in characteristics. The GTO thyristor may be safely re-triggered when a small amount of tail current is still flowing. In contrast, the gate circuit must remain low impedance until the tail current has fallen to zero or below a level which the higher impedance  $V_{GR}$  circuit can sink without being pulled down below  $-2$  Volts. If the gate circuit is to be switched to a higher impedance before the tail current has reached zero then the requirements of diagram 12 must be applied.

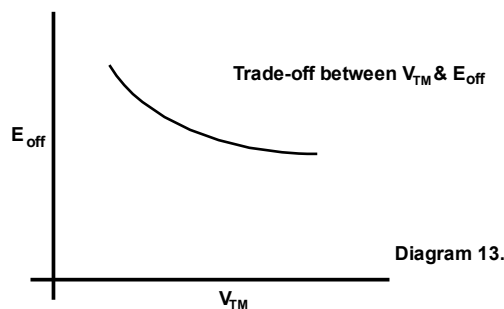


The figure  $t_{gw}$ , as given in the characteristic data, is the maximum time required for the tail current to decay to zero. The figure is applicable under all normal operating conditions for the device; provided suitable gate drive is employed. At lower turn-off current, or with special gate drive considerations, this time may be reduced (each case needs to be considered individually). Typical turn-off losses are given in the curves of figures 8, the integration period for the losses is nominally taken to the end of the tail time ( $i_{tail} < 2A$ ) i.e.: -

$$E_{off} = \int_0^{t_{gt} + t_{tail}} i v dt.$$



The curves of figure 8 give the turn-off energy with a fixed value of  $V_{DM}$  and  $V_D=50\%V_{DRM}$ . The curves are for energy against turn-off current/snubber capacitance with a correction for voltage inset as an additional graph (snubber equivalent to diagram 2 is assumed). From these curves a typical value of turn-off energy for any combination of  $I_{TGQ}/C_s$  and  $V_D$  or  $V_{DM}$  can be derived. Only typical data is included, to allow for the trade-off with on-state voltage ( $V_{TM}$ ) which is a feature of these devices, see diagram 13. When calculating losses in an application, the use of a maximum  $V_{TM}$  and typical  $E_{off}$  will (under normal operating frequencies) give a more realistic value. The lowest  $V_{TM}$  device of this type would have a maximum turn-off energy of 1.5x the figure given in the curves of figures 13 & 14.



### 2.8 Safe turn-off periphery

The necessity to control  $dv/dt$  at turn-off for the GTO thyristor implies a trade-off between  $I_{TGQ}/V_{DM}/C_s$ . This information is given in the curves of figure 10. The information in these curves should be considered as maximum limits and not implied operating conditions, some margin of 'safety' is advised with the conditions of the curves reserved for occasional excursions. It should be noted that these curves are derived at maximum junction temperature, however, they may be applied across the full operating temperature range of the device provided additional precautions are taken. At very low temperature, (below  $-10^{\circ}\text{C}$ ) the fall-time of device becomes very rapid and can give rise to very high turn-off voltage spikes, as such it is advisable to reduce snubber loop inductance to  $<0.15\mu\text{H}$  to minimise this effect.

**Curves**

Figure 1 - On-state characteristics of Limit device

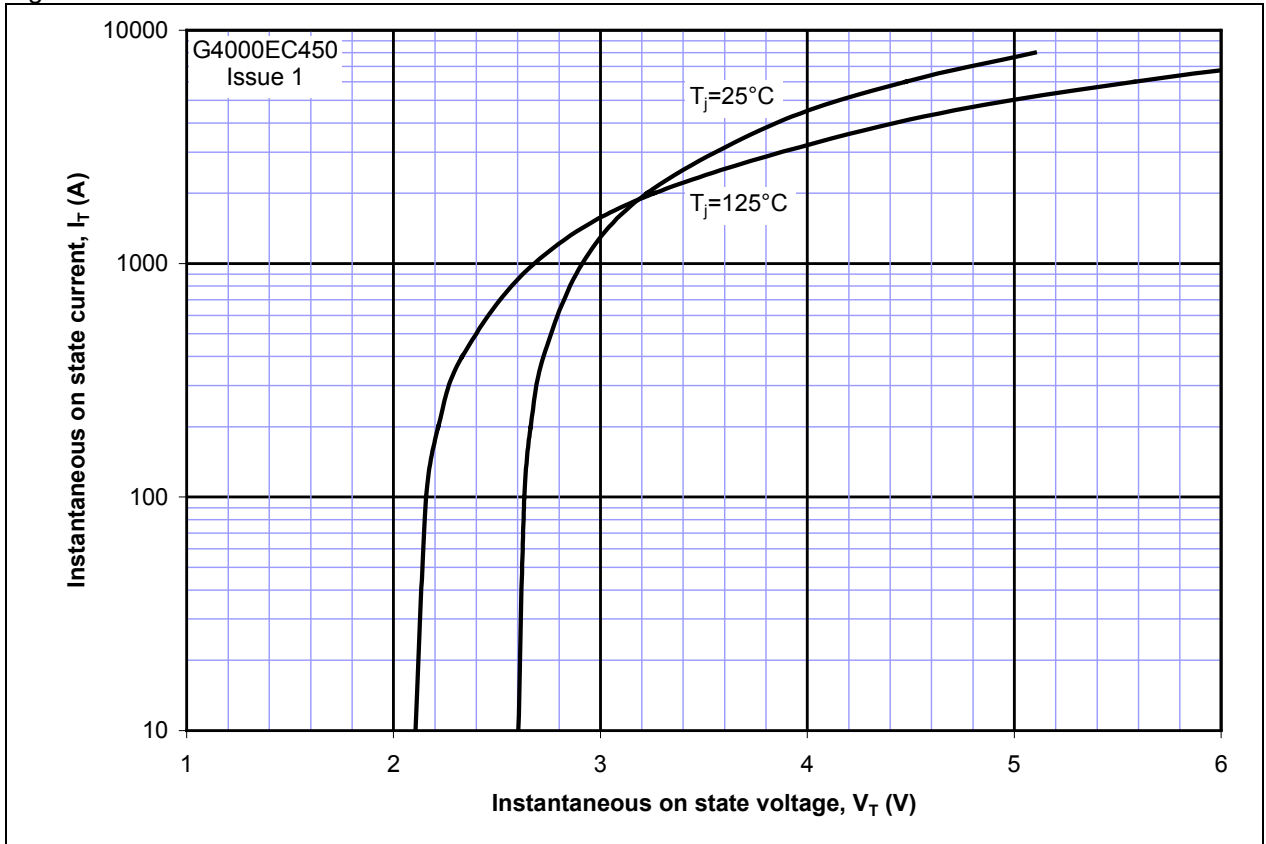


Figure 2 - Maximum surge and  $I^2t$  Ratings

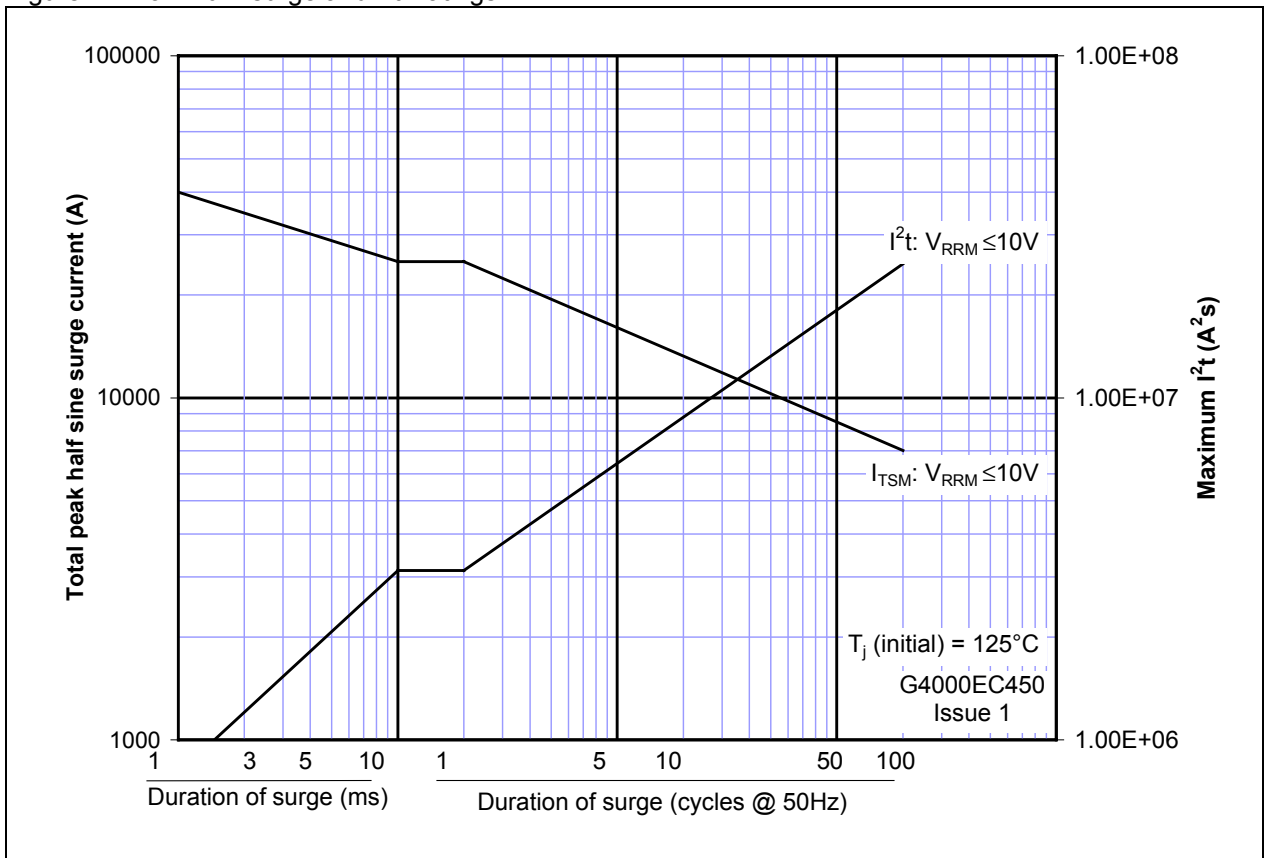


Figure 3 – Forward gate characteristics

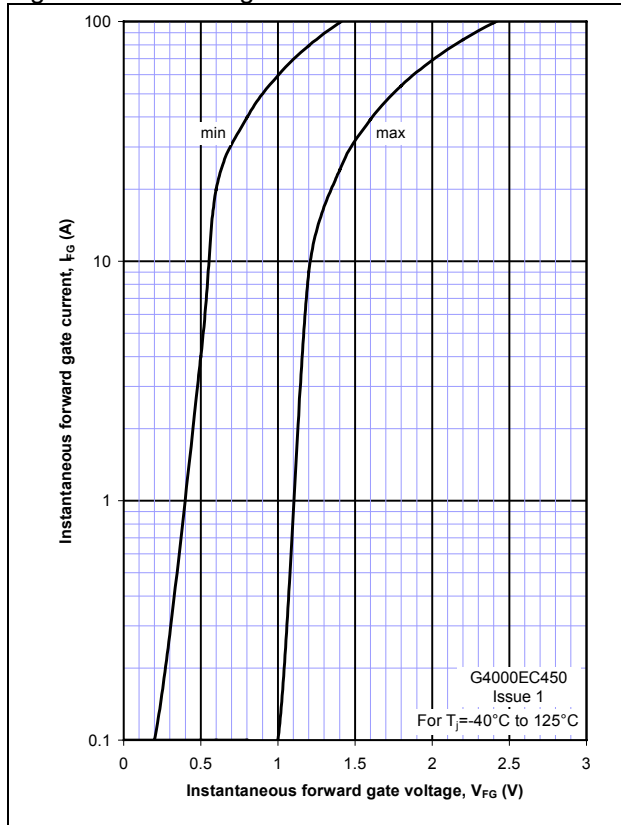


Figure 4 – Transient thermal impedance

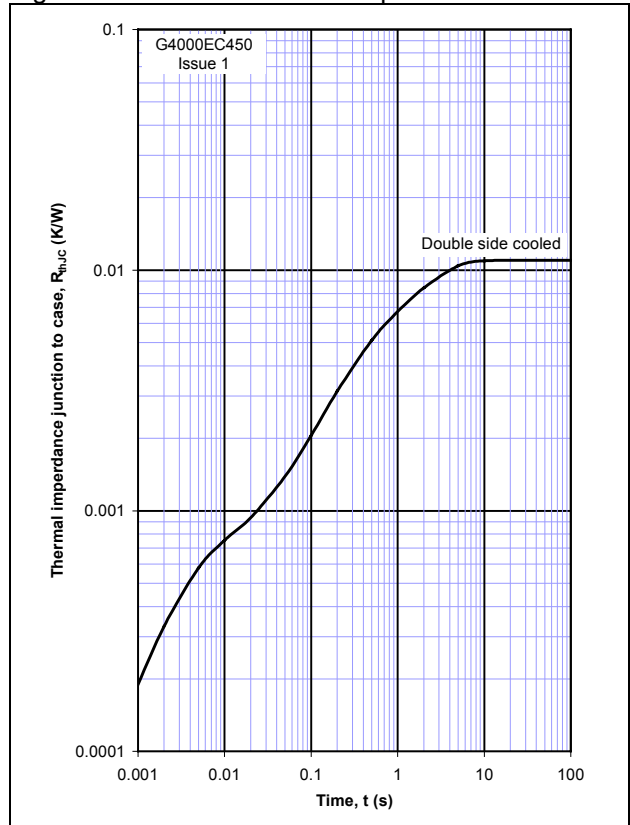


Figure 5 – Typical forward blocking voltage Vs. external gate-cathode resistance

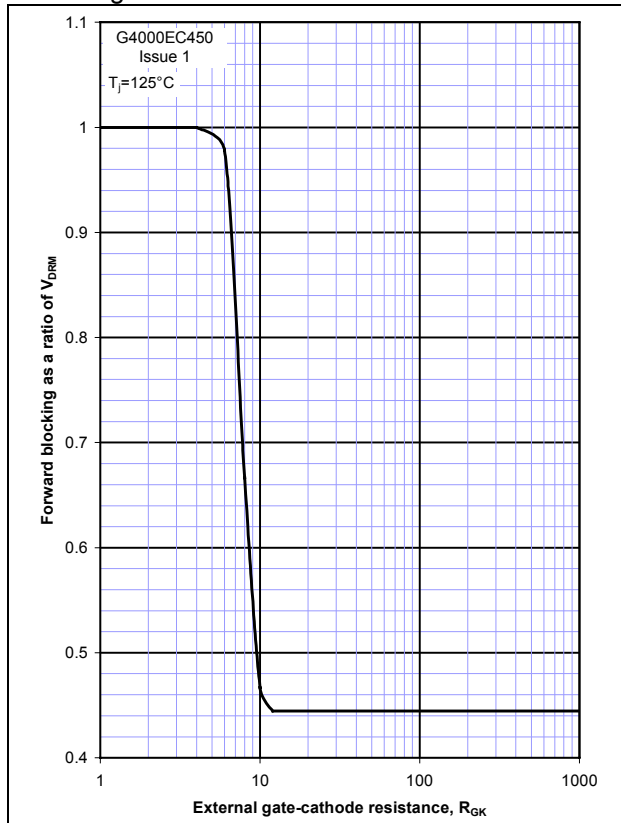


Figure 6 – Gate trigger current

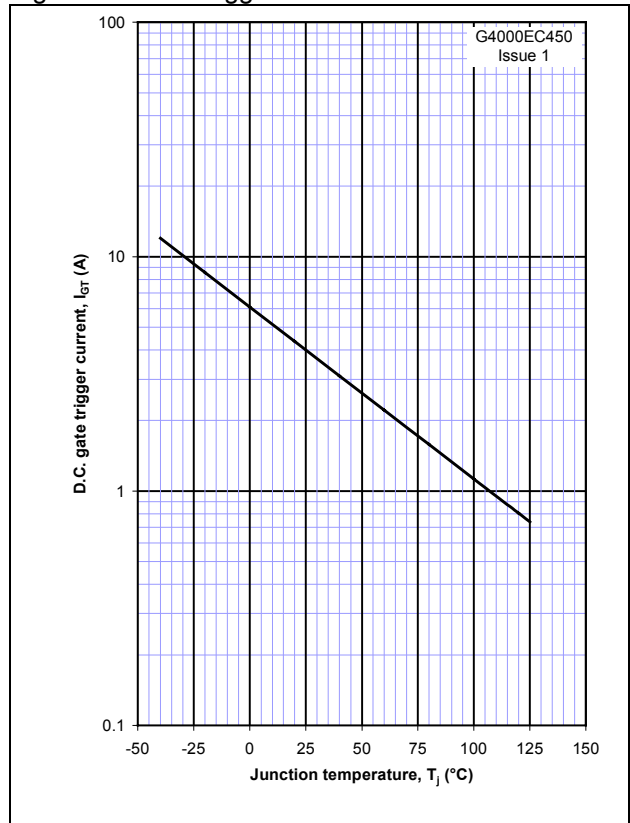


Figure 7 – Typical turn-on energy per pulse

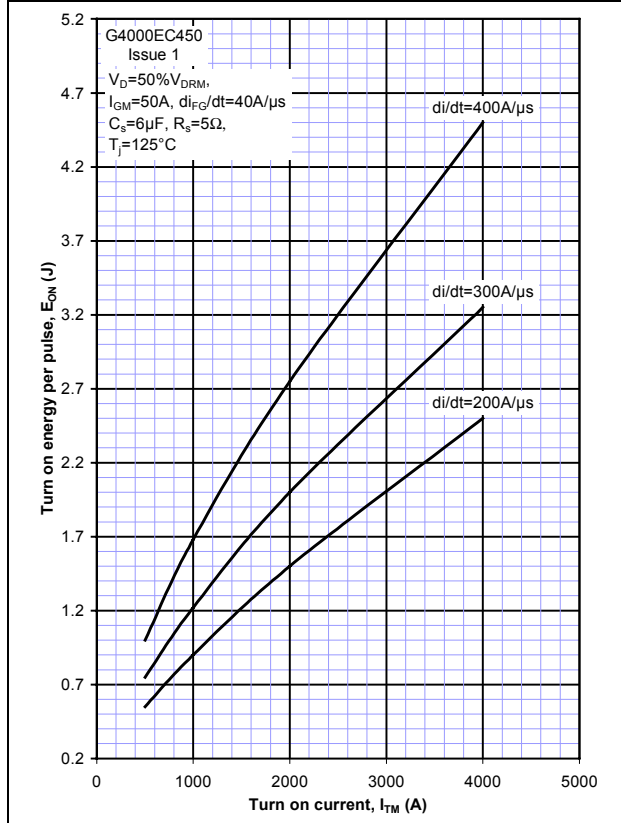


Figure 8 – Typical turn-off energy per pulse

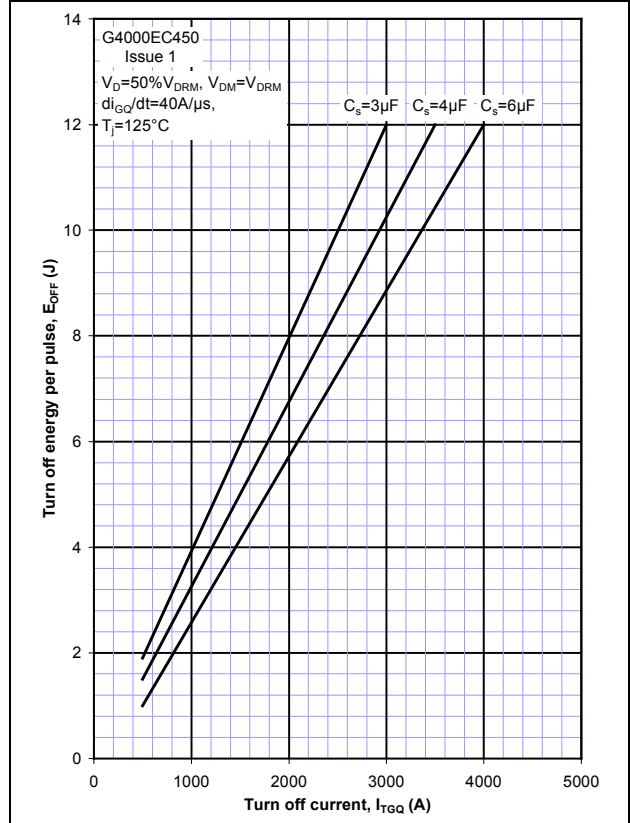


Figure 9 – Maximum gate turn-off charge

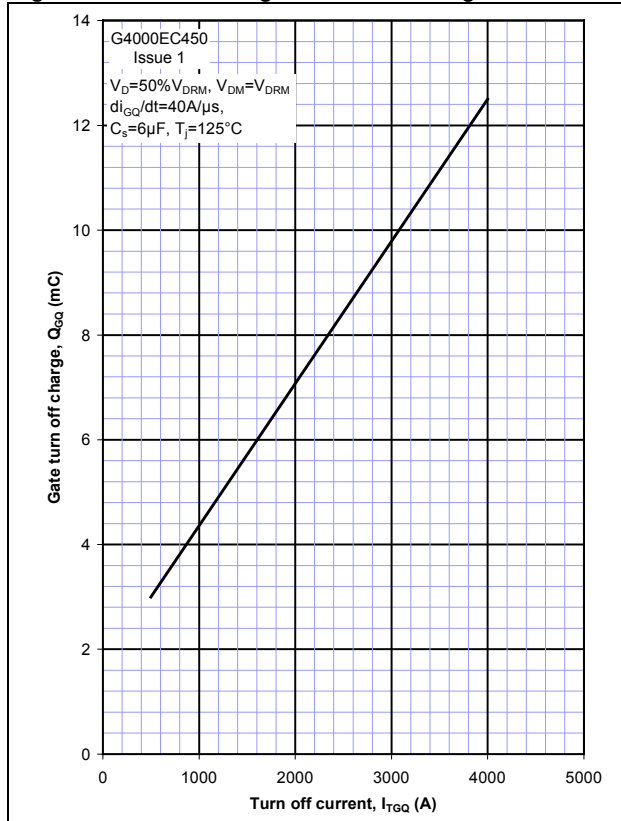
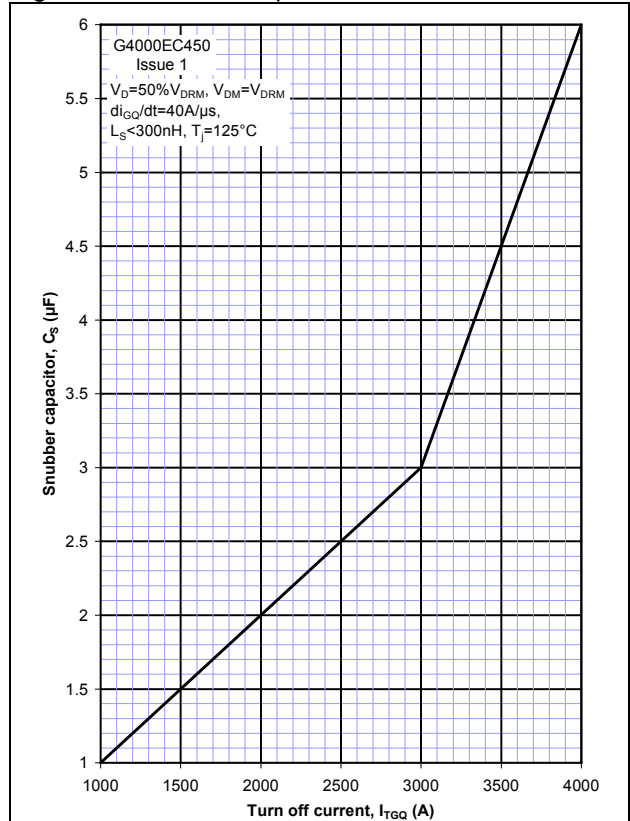
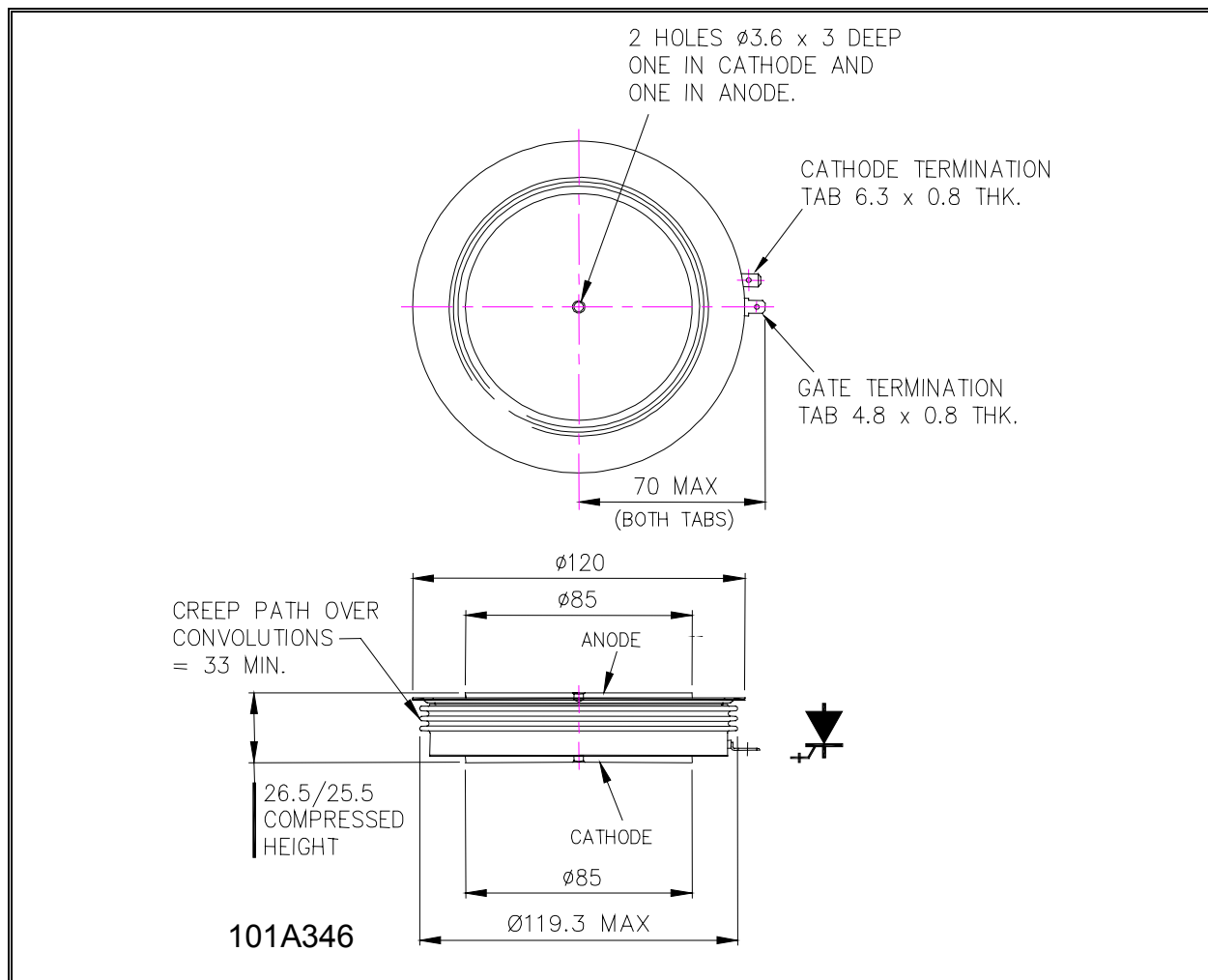


Figure 10 – Maximum permissible turn-off current



**Outline Drawing & Ordering Information**



| ORDERING INFORMATION                  |                       |   |            |
|---------------------------------------|-----------------------|---|------------|
| (Please quote 10 digit code as below) |                       |   |            |
| <b>G4000</b>                          | <b>EC</b>             | <b>45</b>                                 | <b>0</b>   |
| Fixed<br>Type Code                    | Fixed<br>Outline Code | Fixed Voltage Code<br>$V_{DRM}/100$<br>45 | Fixed Code |

Typical order code: G4000EC450 – 4500V  $V_{DRM}$ , 26mm clamp height capsule.

**IXYS Semiconductor GmbH**  
Edisonstraße 15  
D-68623 Lampertheim  
Tel: +49 6206 503-0  
Fax: +49 6206 503-627  
E-mail: [marcom@ixys.de](mailto:marcom@ixys.de)



**Westcode Semiconductors Ltd**  
Langley Park Way, Langley Park,  
Chippenham, Wiltshire, SN15 1GE.  
Tel: +44 (0)1249 444524  
Fax: +44 (0)1249 659448  
E-mail: [WSL.sales@westcode.com](mailto:WSL.sales@westcode.com)

**IXYS Corporation**  
3540 Bassett Street  
Santa Clara CA 95054 USA  
Tel: +1 (408) 982 0700  
Fax: +1 (408) 496 0670  
E-mail: [sales@ixys.net](mailto:sales@ixys.net)

[www.westcode.com](http://www.westcode.com)

[www.ixys.com](http://www.ixys.com)

**Westcode Semiconductors Inc**  
3270 Cherry Avenue  
Long Beach CA 90807 USA  
Tel: +1 (562) 595 6971  
Fax: +1 (562) 595 8182  
E-mail: [WSI.sales@westcode.com](mailto:WSI.sales@westcode.com)

The information contained herein is confidential and is protected by Copyright. The information may not be used or disclosed except with the written permission of and in the manner permitted by the proprietors Westcode Semiconductors Ltd.

© Westcode Semiconductors Ltd.

In the interest of product improvement, Westcode reserves the right to change specifications at any time without prior notice.

Devices with a suffix code (2-letter, 3-letter or letter/digit/letter combination) added to their generic code are not necessarily subject to the conditions and limits contained in this report.