

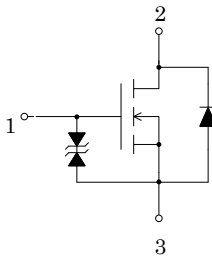
Features

- Low on-resistance
- Built-in gate protection diode

Applications

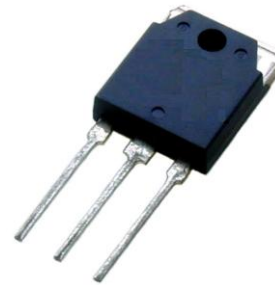
- Electric power steering
- High current switching

Internal Equivalent Circuit



Package

TO-3P



Key Specifications

- $V_{(BR)DSS} = 60V$ ($I_D=100\mu A$)
- $R_{DS(ON)} = 4.8m\Omega$ max. ($V_{GS}=10V, I_D=35A$)
- $R_{DS(ON)} = 6.0m\Omega$ max. ($V_{GS}=8V, I_D=35A$)

Absolute maximum ratings

($T_a=25^\circ C$)

Characteristic	Symbol	Rating	Unit
Drain to Source Voltage	V_{DSS}	60	V
Gate to Source Voltage	V_{GSS}	± 20	V
Continuous Drain Current	I_D	± 100	A
Pulsed Drain Current	$I_{D(pulse)}^{*1}$	± 200	A
Maximum Power Dissipation	P_D	132 ($T_c=25^\circ C$)	W
Single Pulse Avalanche Energy	E_{AS}^{*2}	400	mJ
Channel Temperature	T_{ch}	175	$^\circ C$
Storage Temperature	T_{stg}	-55 to +175	$^\circ C$

*1 $PW \leq 100\mu sec.$ duty cycle $\leq 1\%$

*2 $V_{DD}=20V, L=1mH, I_L=20A,$ unclamped, See Fig.1

The information included herein is believed to be accurate and reliable. However, SANKEN ELECTRIC CO., LTD assumes no responsibility for its use ; nor for any infringements of patents or other rights of third parties that may result from its use.

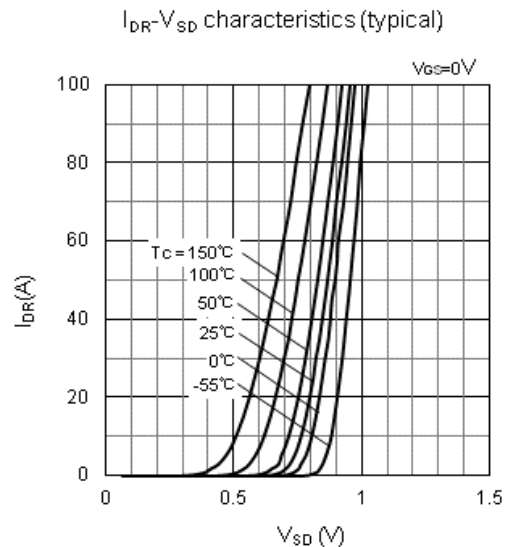
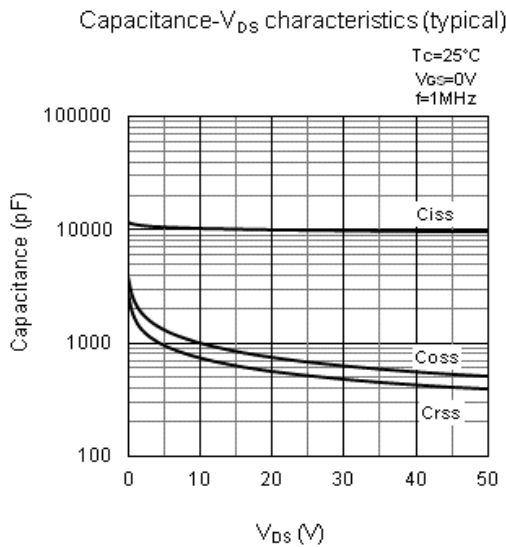
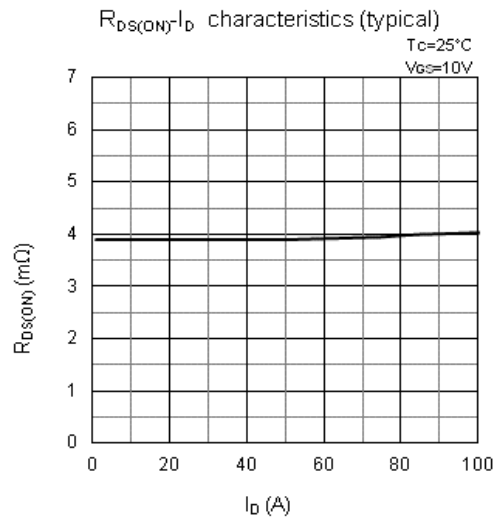
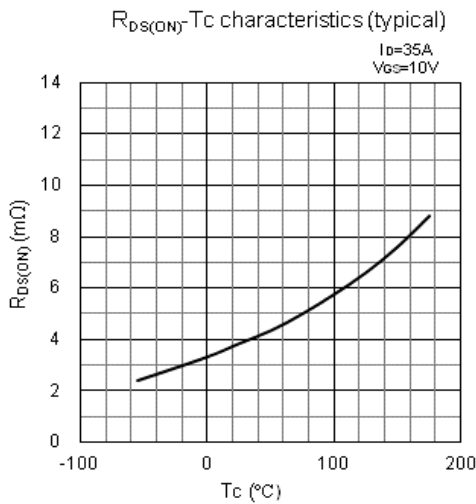
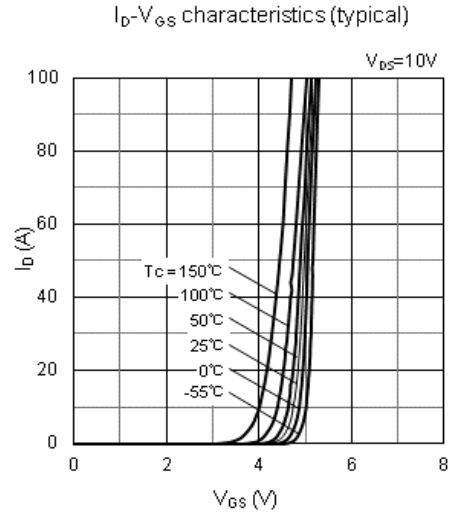
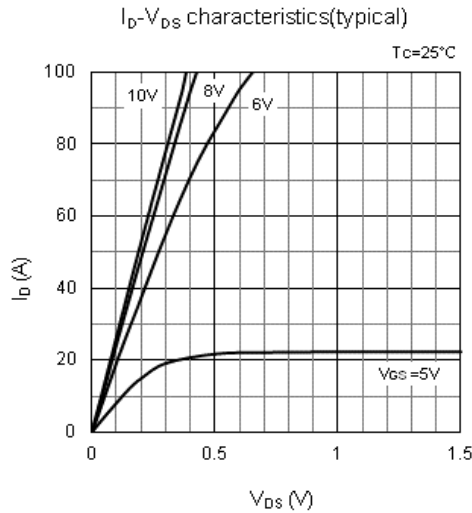
Electrical characteristics

(Ta=25°C)

Characteristic	Symbol	Test Conditions	Limits			Unit
			MIN	TYP	MAX	
Drain to Source breakdown Voltage	$V_{(BR)DSS}$	$I_D=100\mu A, V_{GS}=0V$	60			V
Gate to Source Leakage Current	I_{GSS}	$V_{GS}=\pm 15V$			± 10	μA
Drain to Source Leakage Current	I_{DSS}	$V_{DS}=60V, V_{GS}=0V$			100	μA
Gate Threshold Voltage	V_{TH}	$V_{DS}=10V, I_D=1mA$	3.25	3.6	3.95	V
Forward Transconductance	$Re(y_{fs})$	$V_{DS}=10V, I_D=35A$	30	80		S
Static Drain to Source On-Resistance	$R_{DS(ON)}$	$I_D=35A, V_{GS}=10V$		3.8	4.8	m Ω
Static Drain to Source On-Resistance	$R_{DS(ON)}$	$I_D=35A, V_{GS}=8V$		4.2	6.0	m Ω
Input Capacitance	C_{iss}	$V_{DS}=10V$ $V_{GS}=0V$ $f=1MHz$	(8250)	10000	(11250)	pF
Output Capacitance	C_{oss}		(800)	1000	(1200)	
Reverse Transfer Capacitance	C_{rss}		(585)	730	(875)	
Turn-On Delay Time	$t_{d(on)}$	$I_D=40A$ $V_{DD}=20V$ $R_G=30\Omega$ $R_L=0.5\Omega$ $V_{GS}=10V$ See Fig.2	(120)	160	(200)	ns
Rise Time	t_r		(290)	490	(690)	
Turn-Off Delay Time	$t_{d(off)}$		(240)	400	(500)	
Fall Time	t_f		(100)	200	(300)	
Source-Drain Diode Forward Voltage	V_{SD}	$I_{SD}=50A,$ $V_{GS}=0V$		0.9	1.2	V
Source-Drain Diode Reverse Recovery Time	t_{rr}	$I_{SD}=25A,$ $di/dt=50A/\mu s$		80		ns
Thermal Resistance Junction to Case	$R_{th(ch-c)}$				1.13	$^{\circ}C/W$
Thermal Resistance Junction to Ambient	$R_{th(ch-a)}$				35.71	$^{\circ}C/W$

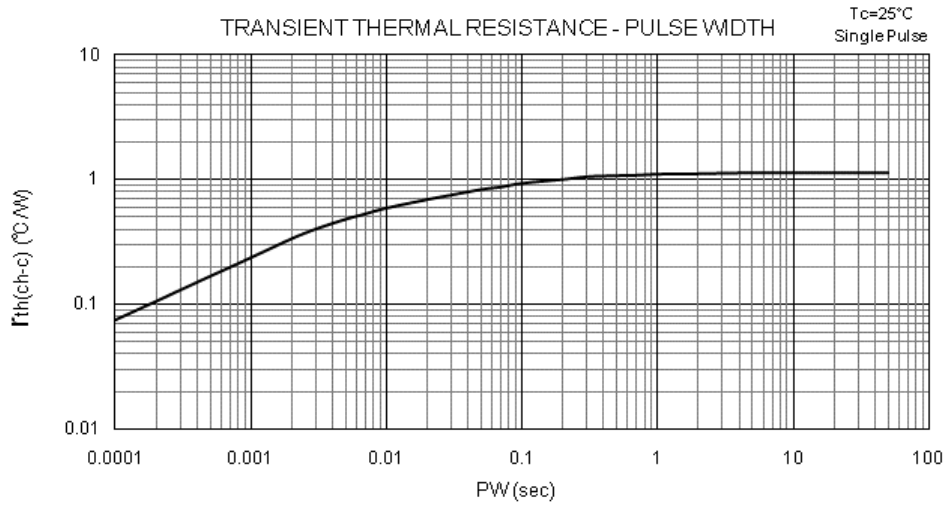
The information included herein is believed to be accurate and reliable. However, SANKEN ELECTRIC CO., LTD assumes no responsibility for its use ; nor for any infringements of patents or other rights of third parties that may result from its use.

Characteristic Curves

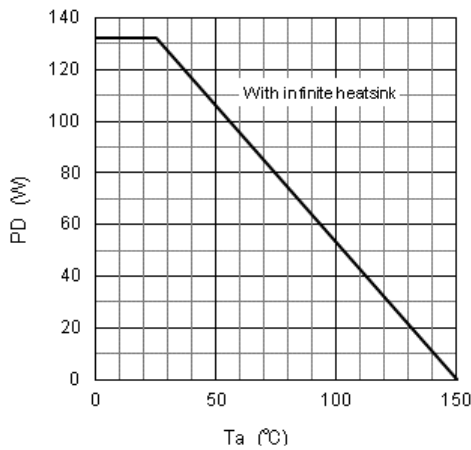


The information included herein is believed to be accurate and reliable. However, SANKEN ELECTRIC CO., LTD assumes no responsibility for its use ; nor for any infringements of patents or other rights of third parties that may result from its use.

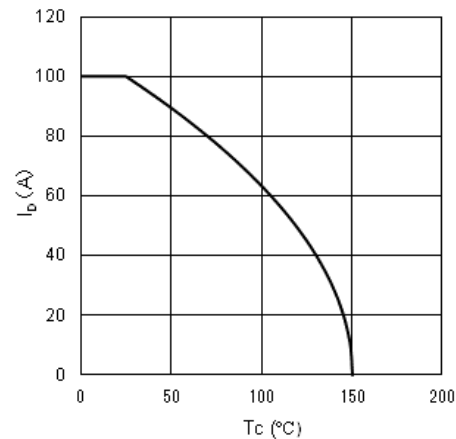
Characteristic Curves



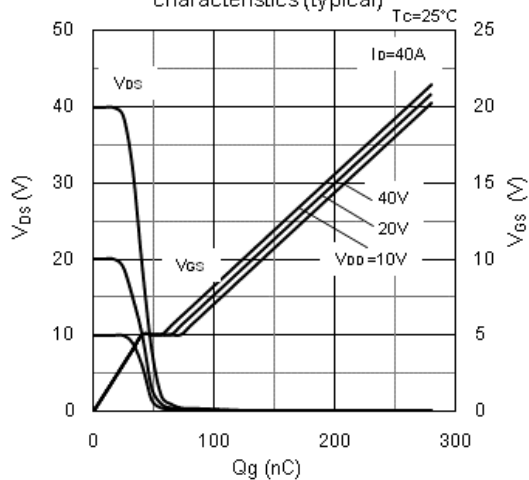
PD-Ta characteristics (typical)



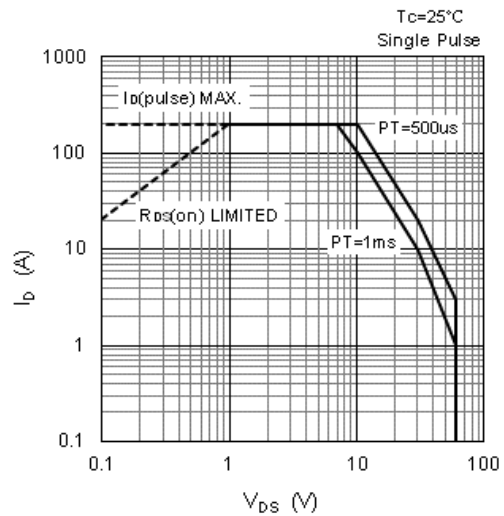
I_b-T_c characteristics



DYNAMIC INPUT/OUTPUT characteristics (typical)

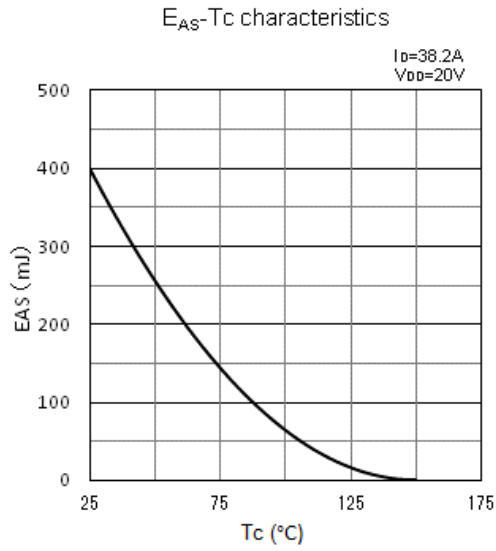


SAFE OPERATING AREA



The information included herein is believed to be accurate and reliable. However, SANKEN ELECTRIC CO., LTD assumes no responsibility for its use ; nor for any infringements of patents or other rights of third parties that may result from its use.

Characteristic Curves



The information included herein is believed to be accurate and reliable. However, SANKEN ELECTRIC CO., LTD assumes no responsibility for its use ; nor for any infringements of patents or other rights of third parties that may result from its use.

Fig.1 Unclamped Inductive Test Method

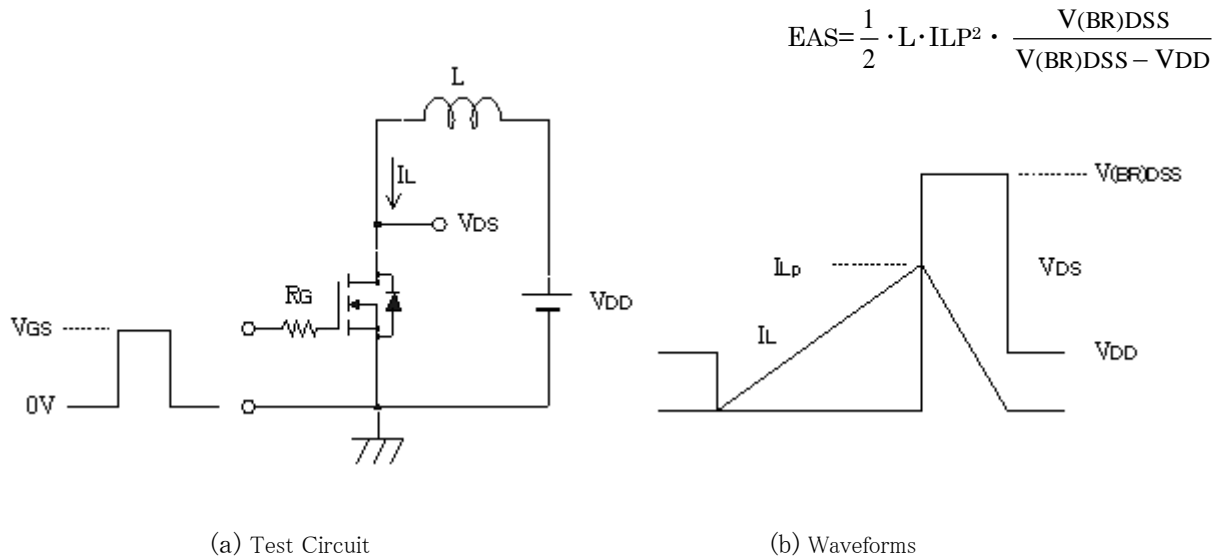
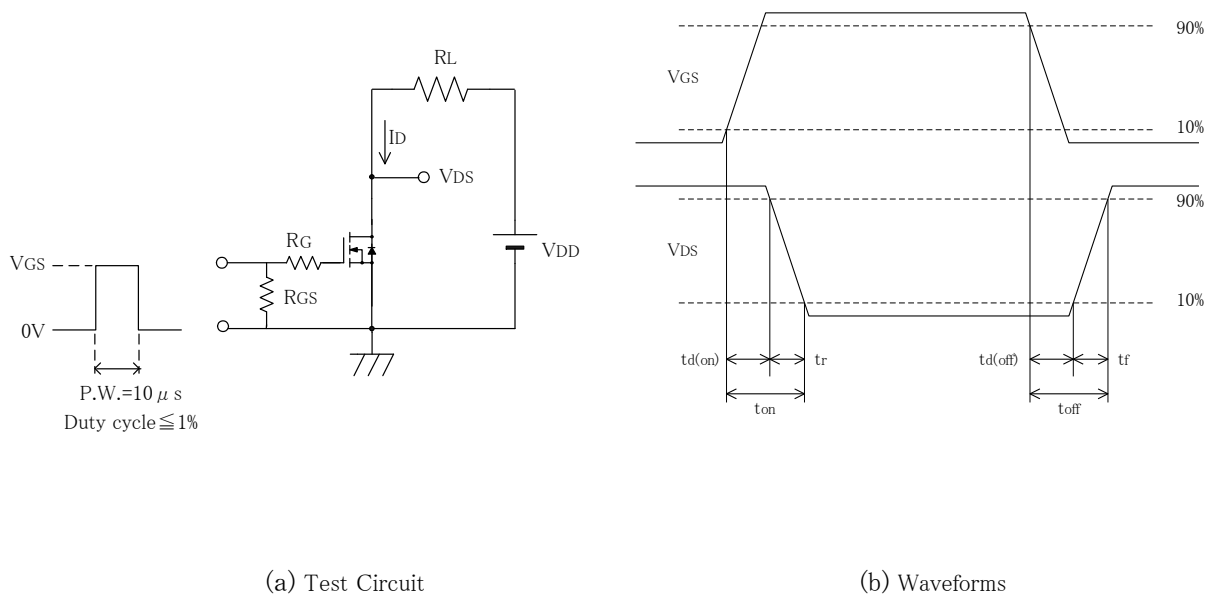


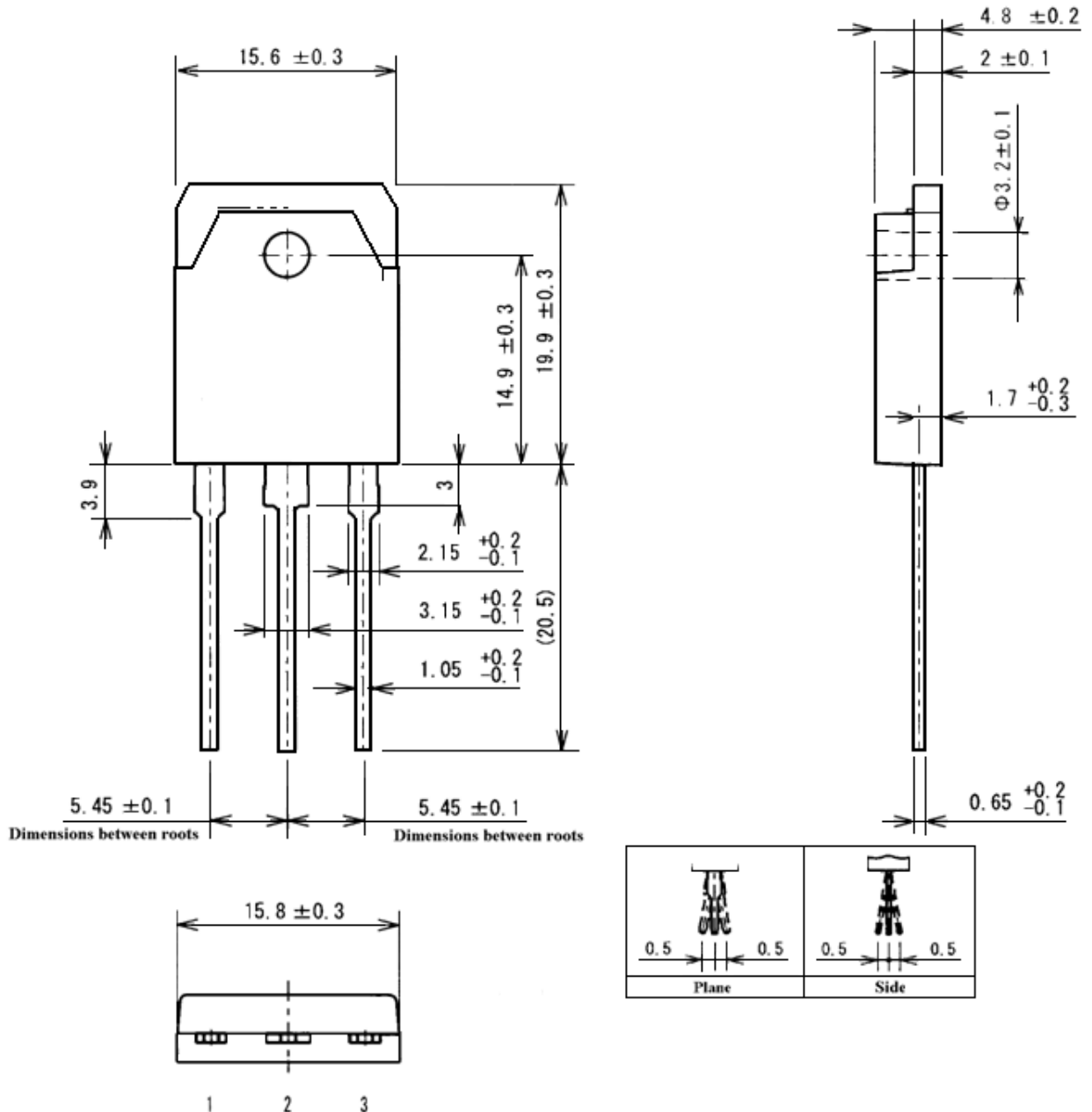
Fig.2 Switching Time Test Method



The information included herein is believed to be accurate and reliable. However, SANKEN ELECTRIC CO., LTD assumes no responsibility for its use ; nor for any infringements of patents or other rights of third parties that may result from its use.

Outline

TO3P



- (1) Gate
- (2) Drain (Back Side)
- (3) Source

Weight Approx. 6g

The information included herein is believed to be accurate and reliable. However, SANKEN ELECTRIC CO., LTD assumes no responsibility for its use ; nor for any infringements of patents or other rights of third parties that may result from its use.