



CHENMKO ENTERPRISE CO.,LTD

Halogens free devices

**SURFACE MOUNT
Dual Digital Silicon Transistor**

VOLTAGE 50 Volts CURRENT 100 mAmpere

CHEMG4GP

APPLICATION

* Switching circuit, Inverter, Interface circuit, Driver circuit.

FEATURE

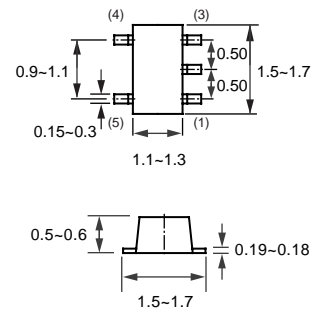
- * Small surface mounting type. (SOT-553)
- * High current gain.
- * Suitable for high packing density.
- * Low collector-emitter saturation.
- * High saturation current capability.
- * Both the CHDTC114T in one package.
- * Built in bias resistor(R1=10kΩ, Typ.)

MARKING

* G4



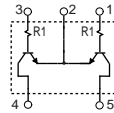
SOT553



Dimensions in millimeters

SOT553

CIRCUIT



LIMITING VALUES

In accordance with the Absolute Maximum Rating System (IEC 60134).

SYMBOL	PARAMETER	CONDITIONS	MIN.	MAX.	UNIT
V _{CC}	Supply voltage		-	50	V
V _{IN}	Input voltage			-5	V
I _o	DC Output current		-	100	mA
I _{C(Max.)}			-	100	
P _{TOT}	Total power dissipation	T _{amb} ≤ 25 °C, Note 1	-	200	mW
T _{STG}	Storage temperature		-55	+150	°C
T _J	Junction temperature		-	150	°C
R _{θJ-S}	Thermal resistance	junction - Ambient Air	-	625	°C/W

Note

2004-07

1. Transistor mounted on an FR4 printed-circuit board.

RATING CHARACTERISTIC (CHEMG4GP)

CHARACTERISTICS

$T_{amb} = 25\text{ }^{\circ}\text{C}$ unless otherwise specified.

SYMBOL	PARAMETER	CONDITIONS	MIN.	TYP.	MAX.	UNIT
BV _{CBO}	Collector-base breakdown voltage	I _C =50μA	50	–	–	V
BV _{CEO}	Collector-emitter breakdown voltage	I _C =1.0mA	50	–	–	V
BV _{EBO}	Emitter-base breakdown voltage	I _E =50μA	5.0	–	–	V
I _{CBO}	Collector cutoff current	V _{CB} =50V	–	–	0.5	μA
I _{EBO}	Emitter cutoff current	V _{EB} =4V	–	–	0.5	μA
V _{CE(sat)}	Collector-emitter saturation voltage	I _C /I _B =1mA/0.1mA	–	–	0.3	V
h _{FE}	DC current gain	I _C =1mA; V _{CE} =5.0V	100	250	600	
R ₁	Input resistor		7.0	10.0	13.0	KΩ
f _T	Transition frequency	I _E =-5mA, V _{CE} =10.0V f=100MHz	–	250	–	MHz

Note

1. Pulse test: t_p≤300μs; δ≤0.02.

RATING CHARACTERISTIC CURVES (CHEMG4GP)

Typical Electrical Characteristics

Fig.1 Input voltage vs. output current (ON characteristics)

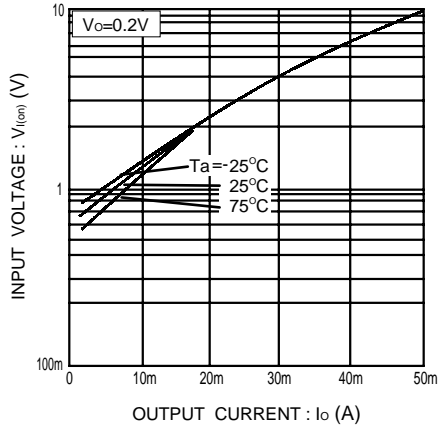


Fig.2 Output current vs. input voltage (OFF characteristics)

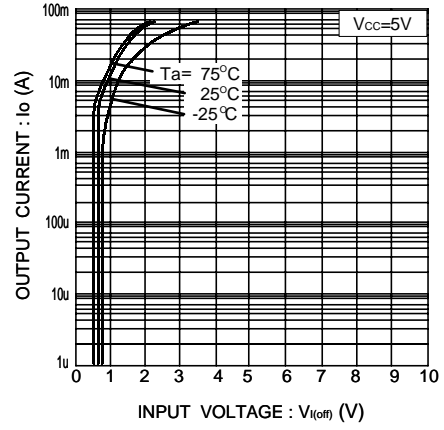


Fig.3 DC current gain vs. output current

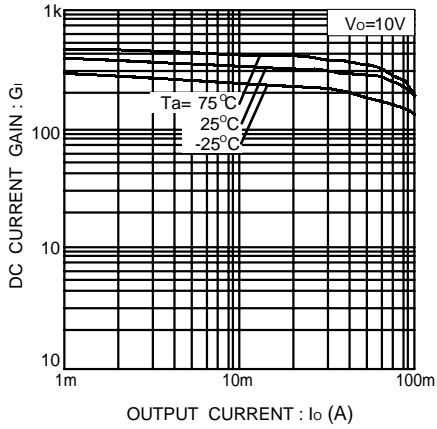


Fig.4 Output voltage vs. output current

