



Micro Commercial Components

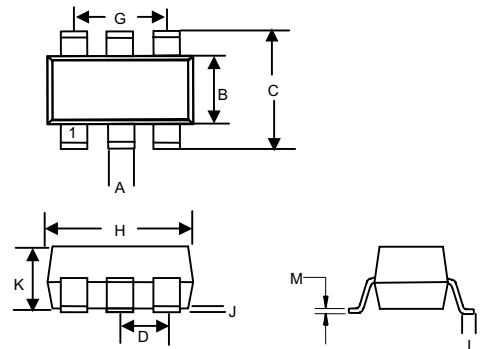


Micro Commercial Components
20736 Marilla Street Chatsworth
CA 91311
Phone: (818) 701-4933
Fax: (818) 701-4939

UMD10N

Digital Transistors

SOT-363



DIM	INCHES		MM		NOTE
	MIN	MAX	MIN	MAX	
A	.006	.014	0.15	0.35	
B	.045	.053	1.15	1.35	
C	.085	.096	2.15	2.45	
D	.026		0.65Nominal		
G	.047	.055	1.20	1.40	
H	.071	.087	1.80	2.20	
J	---	.004	---	0.10	
K	.035	.043	0.90	1.10	
L	.010	.018	0.26	0.46	
M	.003	.006	0.08	0.15	

Features

- Both the DTC123J chip and DTA123J chip in a package
- Mounting possible with SOT-363 automatic mounting machines.
- Transistor elements are independent, eliminating interference.
- Halogen free available upon request by adding suffix "-HF"
- Lead Free Finish/RoHS Compliant ("P" Suffix designates RoHS Compliant. See ordering information)
- Epoxy meets UL 94 V-0 flammability rating
- Moisture Sensitivity Level 1

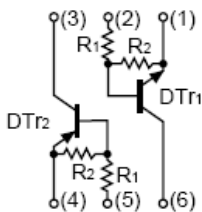
T_{R1} Absolute maximum ratings @ 25°C

Symbol	Parameter	Value	Unit
V _{CC}	Supply voltage	50	V
V _{IN}	Input voltage	-5~12	V
I _O	Output current	100	mA
I _{C(MAX)}	Collector Current	100	mA
P _d	Power dissipation	150	mW
T _j	Junction temperature	150	°C
T _{stg}	Storage temperature	-55~150	°C

T_{R1} Electrical Characteristics @ 25°C

Symbol	Parameter	Min	Typ	Max	Unit
V _{I(off)}	Input voltage (V _{CC} =5V, I _O =100μA)	0.5	---	---	V
V _{I(on)}	Input voltage (V _O =0.3V, I _O =5mA)	---	---	1.1	V
V _{O(on)}	Output voltage (I _O /I _I =5mA/0.25mA)	---	0.1	0.3	V
I _I	Input current (V _I =5V)	---	---	3.6	mA
I _{O(off)}	Output current (V _{CC} =50V, V _I =0)	---	---	0.5	μA
G ₁	DC current gain (V _O =5V, I _O =10mA)	80	---	---	
R ₁	Input resistance	1.54	2.2	2.86	KΩ
R ₂ /R ₁	Resistance ratio	17	21	26	
f _T	Transition frequency (V _{CE} =10V, I _E =5mA, f=100MHz)	---	250	---	MHz

Equivalent circuit



Marking :D10

UMD10N

T_{R2} Absolute maximum ratings (T_a=25°C)

Parameter	Symbol	Limits	Unit
Supply voltage	V _{CC}	-50	V
Input voltage	V _{IN}	-12~5	V
Output current	I _o	-100	mA
	I _{C(MAX)}	-100	
Power dissipation	P _d	150	mW
Junction temperature	T _j	150	°C
Storage temperature	T _{stg}	-55~150	°C

T_{R2} Electrical characteristics (T_a=25°C)

Parameter	Symbol	Min.	Typ	Max.	Unit	Conditions
Input voltage	V _{I(off)}	-0.5			V	V _{CC} =-5V, I _o =-100μA
	V _{I(on)}			-1.1		V _O =-0.3V, I _o =-5mA
Output voltage	V _{O(on)}		-0.1	-0.3	V	I _o /I _i =-5mA/-0.25mA
Input current	I _i			-3.6	mA	V _i =-5V
Output current	I _{O(off)}			-0.5	μA	V _{CC} =-50V, V _i =0
DC current gain	G ₁	80				V _O =-5V, I _o =-10mA
Input resistance	R ₁	1.54	2.2	2.86	KΩ	-
Resistance ratio	R ₂ /R ₁	17	21	26		-
Transition frequency	f _T		250		MHz	V _{CE} =-10V, I _E =-5mA, f=100MHz



Micro Commercial Components

Ordering Information :

Device	Packing
(Part Number)-TP	Tape&Reel;3Kpcs/Reel

Note : Adding "-HF" suffix for halogen free, eg. Part Number-TP-HF

*****IMPORTANT NOTICE*****

Micro Commercial Components Corp. reserves the right to make changes without further notice to any product herein to make corrections, modifications , enhancements , improvements , or other changes . **Micro Commercial Components Corp .** does not assume any liability arising out of the application or use of any product described herein; neither does it convey any license under its patent rights ,nor the rights of others . The user of products in such applications shall assume all risks of such use and will agree to hold **Micro Commercial Components Corp .** and all the companies whose products are represented on our website, harmless against all damages.

*****LIFE SUPPORT*****

MCC's products are not authorized for use as critical components in life support devices or systems without the express written approval of Micro Commercial Components Corporation.

*****CUSTOMER AWARENESS*****

Counterfeiting of semiconductor parts is a growing problem in the industry. Micro Commercial Components (MCC) is taking strong measures to protect ourselves and our customers from the proliferation of counterfeit parts. MCC strongly encourages customers to purchase MCC parts either directly from MCC or from Authorized MCC Distributors who are listed by country on our web page cited below. Products customers buy either from MCC directly or from Authorized MCC Distributors are genuine parts, have full traceability, meet MCC's quality standards for handling and storage. **MCC will not provide any warranty coverage or other assistance for parts bought from Unauthorized Sources.** MCC is committed to combat this global problem and encourage our customers to do their part in stopping this practice by buying direct or from authorized distributors.