

30A Avg.

120 Volts

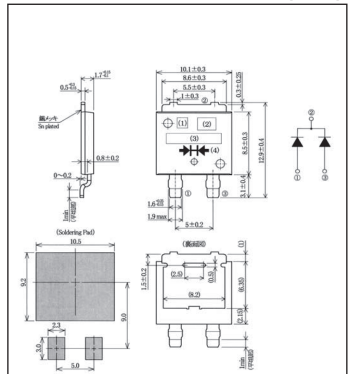
SBD

UCHS30A12

■最大定格 Maximum Ratings (Ta=25°C : unless otherwise specified)

Item	Symbol	Condition		Unit
くり返しピーク逆電圧 Repetitive Peak Reverse Voltage	$V_{RRM}$	120		V
平均整流電流 Average Rectified Forward Current	$I_O$	50Hz 正弦全波, 抵抗負荷 50Hz Full Sine Wave, Resistance Load	$T_c=106^\circ\text{C}$ $V_{RM}=60\text{V}$	30 A
実効順電流 R.M.S. Forward Current	$I_F(\text{RMS})$	33.3 A		
サージ順電流 Surge Forward Current	$I_{FSM}$	250	50Hz正弦全波 1 サイクル 非くり返し 50Hz Full Sine Wave 1cycle, Non-repetitive	A
動作接合温度範囲 Operating Junction Temperature Range	$T_{jw}$	-40~+150 °C		
保存温度範囲 Storage Temperature Range	$T_{stg}$	-40~+150 °C		

■OUTLINE DRAWING(mm)



■APPROX. NET WEIGHT:0.59g

■電氣的・熱的特性 Electrical/Thermal Characteristics

Item	Symbol	Condition	Min.	Typ.	Max.	Unit
ピーク逆電流 Peak Reverse Current	$I_{RM}$	$T_j=25^\circ\text{C}, V_{RM}=V_{RRM}$ , 一素子あたり Per Diode	—	—	100	$\mu\text{A}$
ピーク順電圧 Peak Forward Voltage	$V_{FM}$	$T_j=25^\circ\text{C}, I_{FM}=15\text{A}$ , 一素子あたり Per Diode	—	—	0.90	V
熱抵抗 Thermal Resistance	$R_{th(j-c)}$	接合部・ケース間 Junction to Case	—	—	1.5	$^\circ\text{C}/\text{W}$

■定格・特性曲線

