
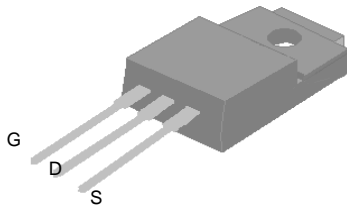


N-channel Enhancement-mode Power MOSFET

PRODUCT SUMMARY

BV_{DSS}	700V
$R_{DS(ON)}$	2.4Ω
I_D	4A

 **Pb-free; RoHS-compliant TO-220FM**



TO-220FM (suffix I)

DESCRIPTION

The SSM04N70BGF-H achieves fast switching performance with low gate charge without a complex drive circuit. It is suitable for high voltage applications such as AC/DC converters, SMPS and general off-line switching circuits.

The SSM04N70BGF-H is in TO-220FM for through-hole mounting where a small footprint is required on the board, and/or an external heatsink is to be attached.

These devices are manufactured with an advanced process, providing improved on-resistance and switching performance.

ABSOLUTE MAXIMUM RATINGS

Symbol	Parameter	Value	Units
V_{DS}	Drain-source voltage	700	V
V_{GS}	Gate-source voltage	±30	V
I_D	Continuous drain current, $T_C = 25^\circ\text{C}$ $T_C = 100^\circ\text{C}$	4	A
		2.5	A
I_{DM}	Pulsed drain current ¹	15	A
P_D	Total power dissipation, $T_C = 25^\circ\text{C}$ Linear derating factor	33	W
		0.26	W/°C
E_{AS}	Single pulse avalanche energy ³	100	mJ
I_{AR}	Avalanche current	4	A
E_{AR}	Repetitive avalanche energy	4	mJ
T_{STG}	Storage temperature range	-55 to 150	°C
T_J	Operating junction temperature range	-55 to 150	°C

THERMAL CHARACTERISTICS

Symbol	Parameter	Value	Units
$R_{\theta JC}$	Maximum thermal resistance, junction-case	3.8	°C/W
$R_{\theta JA}$	Maximum thermal resistance, junction-ambient	65	°C/W

Notes:

1. Pulse width must be limited to avoid exceeding the safe operating area.
2. Pulse width <300us, duty cycle <2%.
3. Starting $T_J = 25^\circ\text{C}$, $V_{DD} = 50\text{V}$, $L = 25\text{mH}$, $R_G = 25\Omega$, $I_{AS} = 4\text{A}$.

ELECTRICAL CHARACTERISTICS (at $T_j = 25^\circ\text{C}$, unless otherwise specified)

Symbol	Parameter	Test Conditions	Min.	Typ.	Max.	Units
BV_{DSS}	Drain-source breakdown voltage	$V_{GS}=0V, I_D=1mA$	700	-	-	V
$\Delta BV_{DSS}/\Delta T_j$	Breakdown voltage temperature coefficient	Reference to 25°C , $I_D=1mA$	-	0.6	-	V/ $^\circ\text{C}$
$R_{DS(ON)}$	Static drain-source on-resistance	$V_{GS}=10V, I_D=2A$	-	-	2.4	Ω
$V_{GS(th)}$	Gate threshold voltage	$V_{DS}=V_{GS}, I_D=250\mu A$	2	-	4	V
g_{fs}	Forward transconductance	$V_{DS}=20V, I_D=1A$	-	2.5	-	S
I_{DSS}	Drain-source leakage current	$V_{DS}=600V, V_{GS}=0V$ $V_{DS}=480V, V_{GS}=0V, T_j = 150^\circ\text{C}$	-	-	10 100	μA μA
I_{GSS}	Gate-source leakage current	$V_{GS}=\pm 30V$	-	-	± 100	nA
Q_g	Total gate charge ²	$I_D=4A$	-	16.7	-	nC
Q_{gs}	Gate-source charge	$V_{DS}=480V$	-	4.1	-	nC
Q_{gd}	Gate-drain ("Miller") charge	$V_{GS}=10V$	-	4.9	-	nC
$t_{d(on)}$	Turn-on delay time ²	$V_{DS}=300V$	-	11	-	ns
t_r	Rise time	$I_D=4A$	-	8.3	-	ns
$t_{d(off)}$	Turn-off delay time	$R_G=10\Omega, V_{GS}=10V$	-	23.8	-	ns
t_f	Fall time	$R_D=75\Omega$	-	8.2	-	ns
C_{iss}	Input capacitance	$V_{GS}=0V$	-	950	-	pF
C_{oss}	Output capacitance	$V_{DS}=25V$	-	65	-	pF
C_{rss}	Reverse transfer capacitance	$f=1.0MHz$	-	6	-	pF

Source-Drain Diode

Symbol	Parameter	Test Conditions	Min.	Typ.	Max.	Units
V_{SD}	Forward voltage ²	$I_S=4A, V_{GS}=0V$	-	-	1.5	V
I_S	Continuous source current (body diode)	$V_D=V_G=0V, V_S=1.3V$	-	-	4	A
I_{SM}	Pulsed source current (body diode) ¹		-	-	15	A

Notes:

1. Pulse width must be limited to avoid exceeding the maximum junction temperature of 150°C .

2. Pulse width $<300\mu s$, duty cycle $<2\%$.

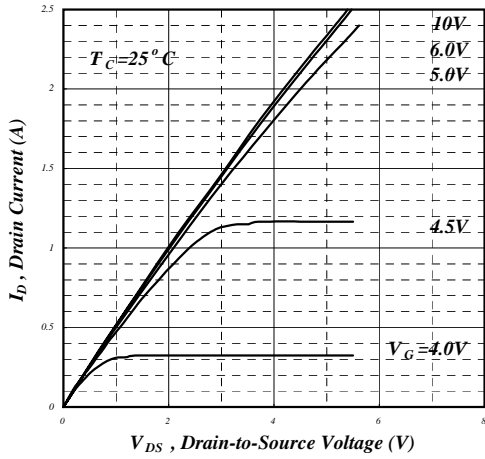


Fig 1. Typical Output Characteristics

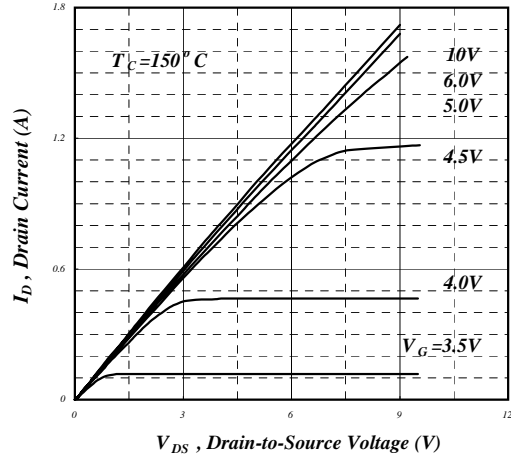


Fig 2. Typical Output Characteristics

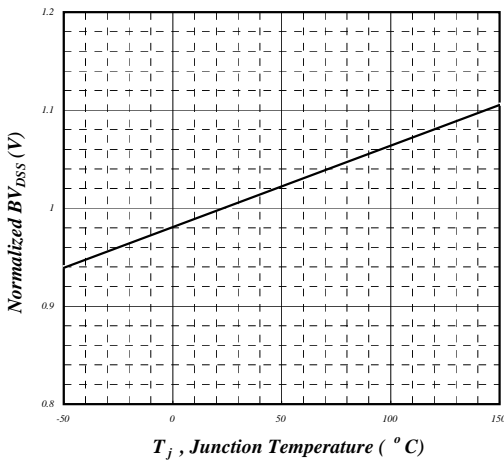


Fig 3. Normalized BV_{DSS} vs. Junction Temperature

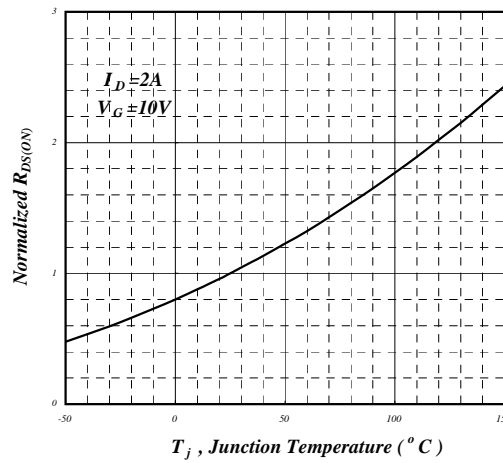


Fig 4. Normalized On-Resistance vs. Junction Temperature

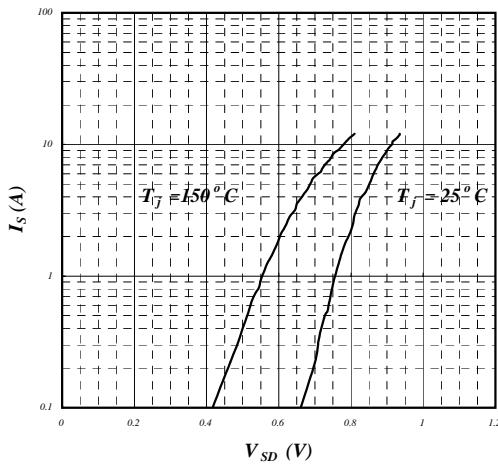


Fig 5. Forward Characteristic of Reverse Diode

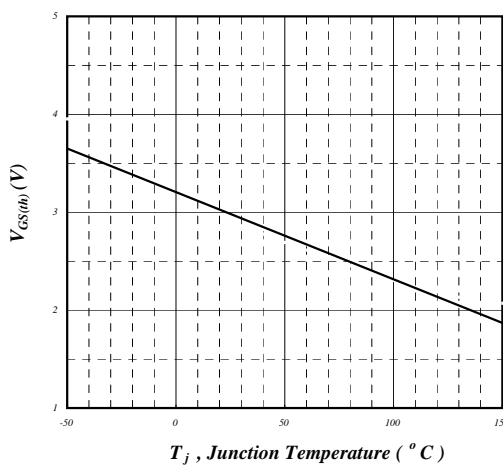


Fig 6. Gate Threshold Voltage vs. Junction Temperature

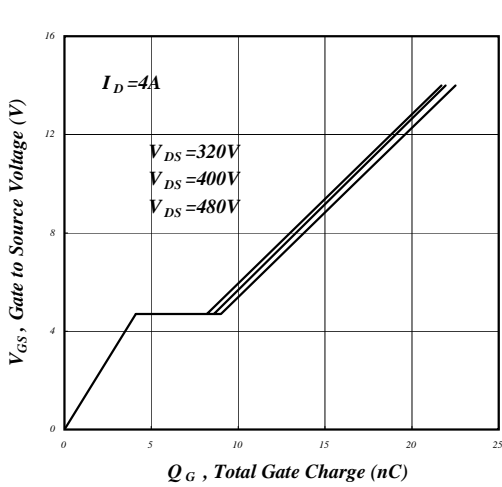


Fig 7. Gate Charge Characteristics

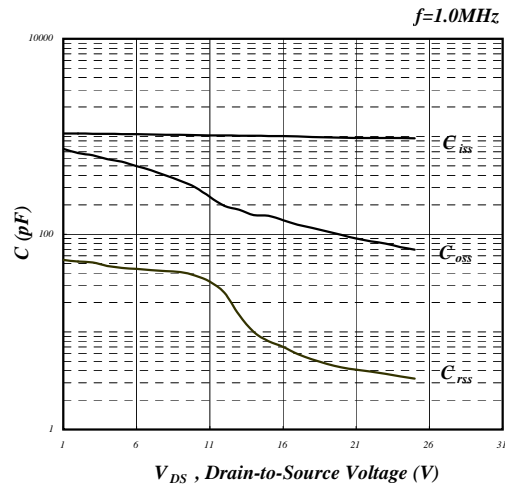


Fig 8. Typical Capacitance Characteristics

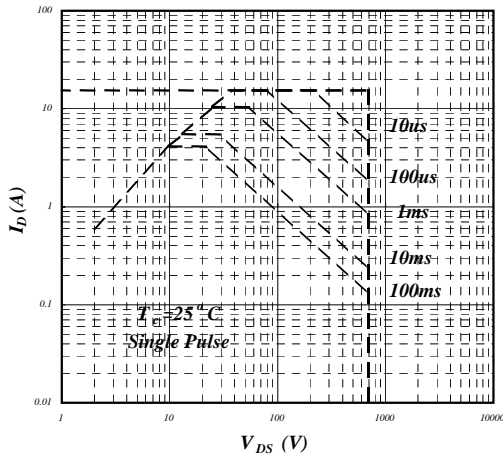


Fig 9. Maximum Safe Operating Area

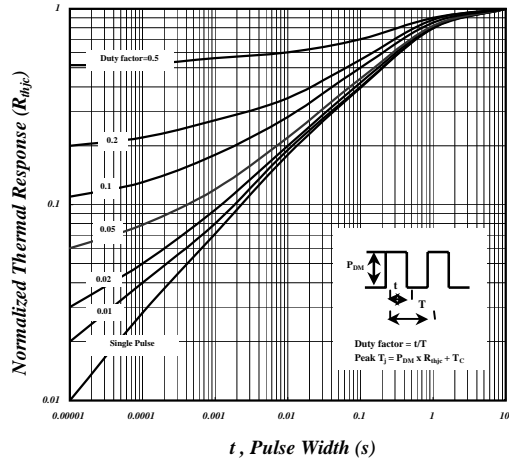


Fig 10. Effective Transient Thermal Impedance

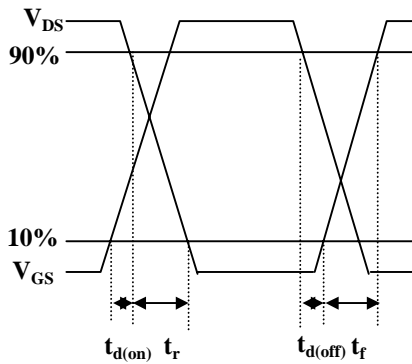


Fig 11. Switching Time Waveform

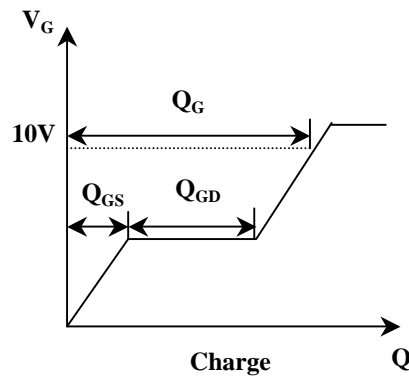
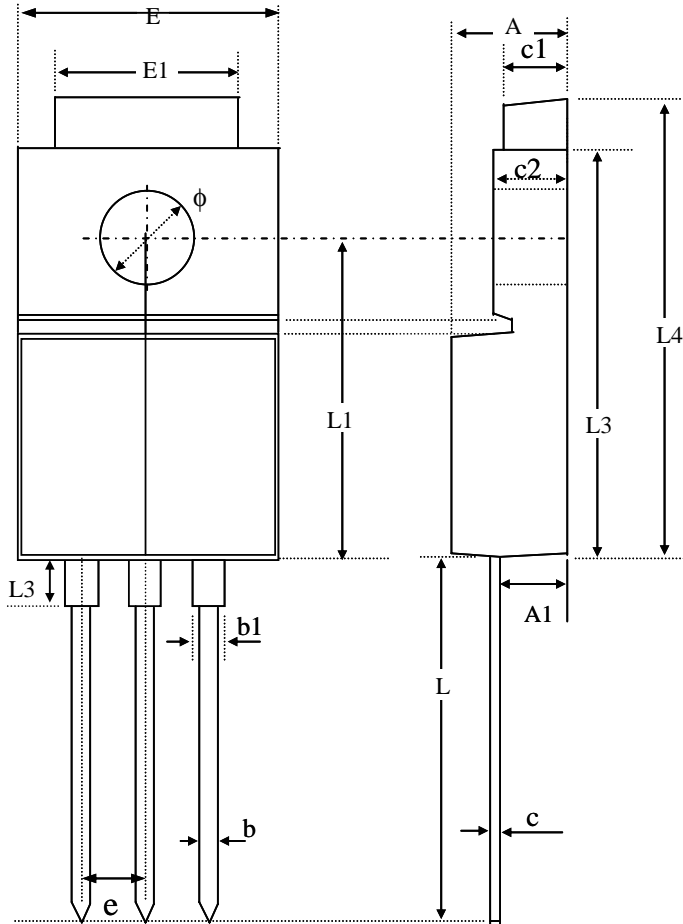
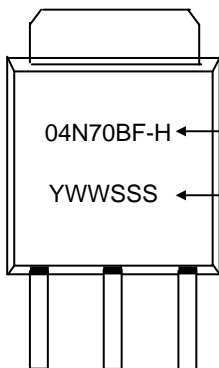


Fig 12. Gate Charge Waveform

PHYSICAL DIMENSIONS - TO-220FM


SYMBOLS	Millimeters		
	MIN	NOM	MAX
A	4.25	4.45	4.65
A1	2.30	2.50	2.70
b	0.60	0.70	0.80
b1	1.00	1.20	1.40
c	0.40	0.50	0.60
c1	2.30	2.50	2.70
c2	2.60	2.80	3.00
E	9.70	10.00	10.30
E1	6.70	7.00	7.30
e	----	2.54	----
L	13.00	14.00	15.00
L1	11.70	12.00	12.30
L3	14.90	15.20	15.50
L4	16.70	17.00	17.30
ϕ	----	3.20	----

1. All dimensions are in millimeters.
2. Dimensions do not include mold protrusions.

PART MARKING - TO-220FM

PART NUMBER: 04N70BF-H = SSM04N70BGF-H

DATE/LOT CODE:

Y = last digit of the year
 WW = work week (01 -> 52)
 SSS = lot code sequence

PACKING: Moisture sensitivity level MSL3

1000pcs in tubes packed inside a moisture barrier bag (MBB).

Information furnished by Silicon Standard Corporation is believed to be accurate and reliable. However, Silicon Standard Corporation makes no guarantee or warranty, express or implied, as to the reliability, accuracy, timeliness or completeness of such information and assumes no responsibility for its use, or for infringement of any patent or other intellectual property rights of third parties that may result from its use. Silicon Standard reserves the right to make changes as it deems necessary to any products described herein for any reason, including without limitation enhancement in reliability, functionality or design. No license is granted, whether expressly or by implication, in relation to the use of any products described herein or to the use of any information provided herein, under any patent or other intellectual property rights of Silicon Standard Corporation or any third parties.