

DIGITRON SEMICONDUCTORS

1N3909-1N3913

FAST RECOVERY RECTIFIER

MAXIMUM RATINGS

Parameter	Symbol	1N3909	1N3910	1N3911	1N3912	1N3913
Working peak reverse voltage	V_{RM}	50V	100V	200V	300V	400V
Operating temperature range	T_J	-65 to +150°C				
Storage temperature range	T_{stg}	-65 to +175°C				
Maximum thermal resistance	$R_{\theta JC}$	0.8°C/W junction to case				
Mounting torque		25-30 inch pounds				
Weight		.54 ounces (15.3 grams) typical				

Add "R" to part numbers for reverse polarity.

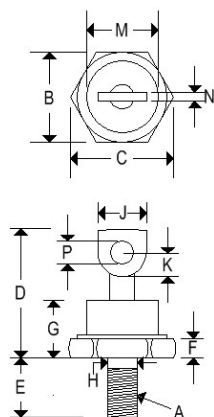
ELECTRICAL CHARACTERISTICS

Parameter	Symbol	Value	Test Conditions
Average forward current	$I_{F(AV)}$	30 Amps	$T_C = 100^\circ\text{C}$, square wave, $R_{\theta JC} = 0.8^\circ\text{C/W}$
Maximum surge current	I_{FSM}	300 Amps	8.3ms, half-sine, $T_C = 100^\circ\text{C}$
Maximum peak forward voltage	V_{FM}	1.40 Volts	$I_{FM} = 50\text{A}$; $T_J = 25^\circ\text{C}^*$
Maximum peak reverse current	I_{RM}	15 μA	V_{RRM} , $T_J = 25^\circ\text{C}$
Maximum peak reverse current	I_{RM}	6.0 mA	V_{RRM} , $T_J = 150^\circ\text{C}$
Maximum reverse recovery time	t_{RR}	200ns	$I_F = 1\text{A dc}$, $V_R = 30\text{V}$, $di/dt = 25\text{A}/\mu\text{s}$
Typical junction capacitance	C_J	130pF	$V_R = 10\text{V}$, $f = 1\text{MHz}$, $T_J = 25^\circ\text{C}$

- * Pulse test: pulse width 300 μsec . Duty cycle 2%

MECHANICAL CHARACTERISTICS

Case	DO-5(R)
Marking	Alpha-numeric
Normal polarity	Cathode is stud
Reverse polarity	Anode is stud (add "R" suffix)



	DO-5(R)			
	Inches		Millimeters	
	Min	Max	Min	Max
A	1/4-28 UNF2A threads			
B	0.669	0.688	16.990	17.480
C	-	0.794	-	20.160
D	-	1.000	-	25.400
E	0.422	0.453	10.720	11.510
F	0.115	0.200	2.920	5.080
G	-	0.450	-	11.430
H	0.220	0.249	5.580	6.320
J	0.250	0.375	6.350	9.530
K	0.156	-	3.960	-
M	-	0.667	-	16.940
N	0.030	0.080	0.760	2.030
P	0.140	0.175	3.560	4.450

Available Non-RoHS (standard) or RoHS compliant (add PBF suffix).

Available as "HR" (high reliability) screened per MIL-PRF-19500, JANTX level. Add "HR" suffix to base part number.

144 Market Street
Kenilworth NJ 07033 USA

phone +1.908.245-7200
fax +1.908.245-0555

sales@digitroncorp.com
www.digitroncorp.com

DIGITRON SEMICONDUCTORS

1N3909-1N3913

FAST RECOVERY RECTIFIER

Figure 1
Typical Forward Characteristics

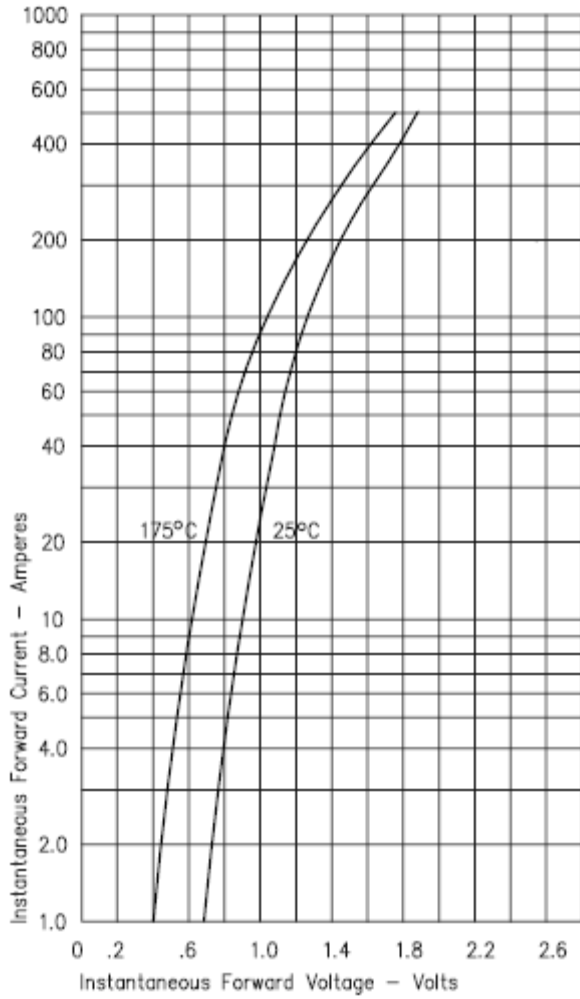


Figure 3
Typical Junction Capacitance

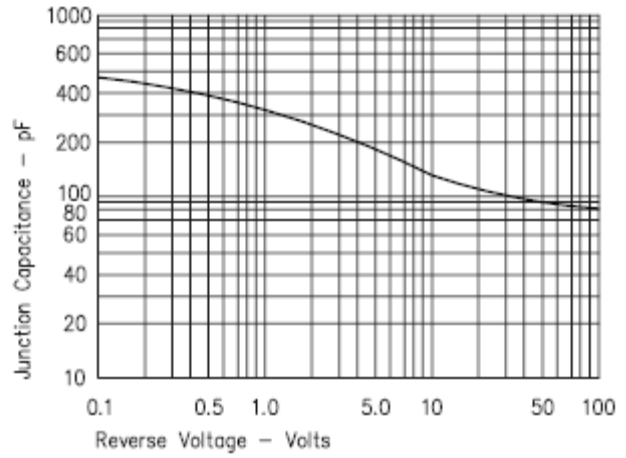


Figure 4
Forward Current Derating

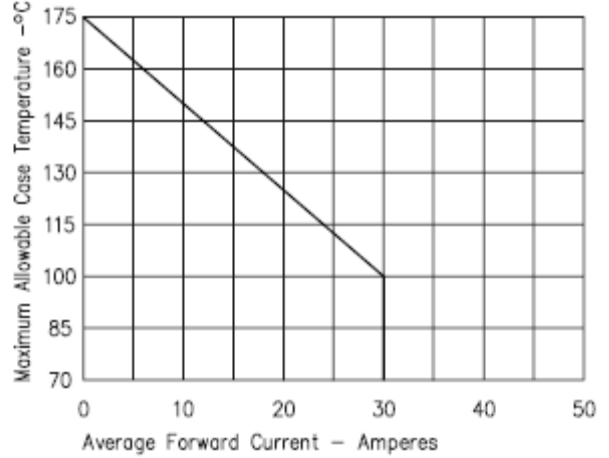


Figure 2
Typical Reverse Characteristics

