

DIGITRON SEMICONDUCTORS

1N5415 – 1N5420

FAST SWITCHING RECTIFIER
GLASS PASSIVATED

MAXIMUM RATINGS

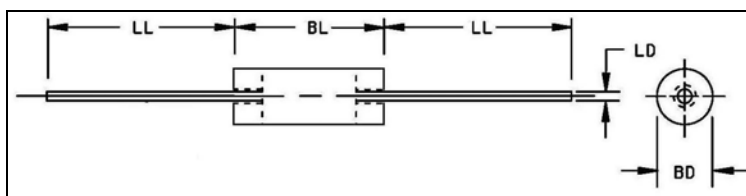
| PEAK INVERSE VOLTAGE | TYPE |
|---|-----------------|
| 50V | 1N5415 |
| 100V | 1N5416 |
| 200V | 1N5417 |
| 400V | 1N5418 |
| 500V | 1N5419 |
| 600V | 1N5420 |
| Maximum Output D.C. Current @ T _A =55°C: @ T _A =100°C: | 3.0A |
| | 2.0A |
| Non-Repetitive Sinusoidal: Surge Current (8.3ms) | 80A |
| Operating Temperature Range: | -65°C to +175°C |
| Storage Temperature Range: | -65°C to +200°C |
| Thermal Resistance θ_{Ω} @ L 3/8" | 20°C/W |

ELECTRICAL CHARACTERISTICS

| TYPE | PIV | MINIMUM REVERSE BREAKDOWN VOLTAGE @ 50 μ A | FORWARD VOLTAGE | | MAXIMUM REVERSE CURRENT | | MAXIMUM REVERSE RECOVERY TIME | |
|--------|------|--|--------------------------|-----------|-------------------------|------------|-------------------------------|-----|
| | | | MIN. | MAX. | 25°C | 100°C | | |
| 1N5415 | 50V | 55V | 0.6V | 1.5V (pk) | 1.0 μ A | 20 μ A | 150 | |
| 1N5416 | 100V | 110V | | | | | 150 | |
| 1N5417 | 200V | 220V | @ 9Adc tp=300 μ s | | 1.0 μ A | 20 μ A | 150 | |
| 1N5418 | 400V | 440V | | | | | 150 | |
| 1N5419 | 500V | 550V | | | | | | 250 |
| 1N5420 | 600V | 660V | | | | | | 400 |

MECHANICAL CHARACTERISTICS

| | |
|------------------|-----------------------------|
| CASE: | Glass |
| MARKING: | Body Painted, Alpha Numeric |
| POLARITY: | Cathode Band |



| Ltr. | Dimensions | | | |
|-----------|---------------|-------|----------------|-------|
| | Inches | | Millimeters | |
| | Min | Max | Min | Max |
| BD | - | 0.145 | - | 3.680 |
| BL | - | 0.300 | - | 7.620 |
| LD | 0.040 ± 0.003 | | 1.020 ± 0.0300 | |
| LL | 0.975 | - | 24.800 | - |

Available Non-RoHS (standard) or RoHS compliant (add PBF suffix).
Available as "HR" (high reliability) screened per MIL-PRF-19500, JANTX level. Add "HR" suffix to base part number.