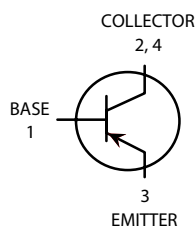
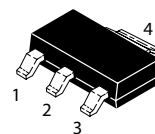


PNP Silicon Epitaxial Transistor

 Lead(Pb)-Free



1. BASE
2. COLLECTOR
3. EMITTER
4. COLLECTOR



SOT-223

ABSOLUTE MAXIMUM RATINGS ($T_A=25^{\circ}\text{C}$)

Rating	Symbol	Value	Unit
Collector to Base Voltage	V_{CBO}	-40	V
Collector to Emitter Voltage	V_{CEO}	-30	V
Collector to Base Voltage	V_{EBO}	-5.0	V
Collector Current	I_C	-3.0	A
Total Device Dissipation $T_A=25^{\circ}\text{C}$	P_D	1.5	W
Junction Temperature	T_j	+150	$^{\circ}\text{C}$
Storage Temperature	T_{stg}	-55 to +150	$^{\circ}\text{C}$

Device Marking

PZT772 = 772

ELECTRICAL CHARACTERISTICS

Characteristics	Symbol	Min	Max	Max	Unit
Collector-Base Breakdown Voltage $I_C=-100\mu\text{A}$, $I_E=0$	BV_{CBO}	-40	-	-	V
Collector-Emitter Breakdown Voltage $I_C=-10\text{mA}$, $I_B=0$	BV_{CEO}	-30	-	-	V
Emitter-Base Breakdown Voltage $I_E=-10\mu\text{A}$, $I_C=0$	BV_{EBO}	-5.0	-	-	V
Collector Cut-Off Current $V_{CB}=-30\text{V}$, $I_E=0$	I_{CBO}	-	-	-1.0	μA
Emitter-Cut-Off Current $V_{EB}=-3\text{V}$, $I_C=0$	I_{EBO}	-	-	-1.0	μA

ELECTRICAL CHARACTERISTICS (T_A=25°C Unless otherwise noted)

Characteristic	Symbol	Min	Typ	Max	Unit
----------------	--------	-----	-----	-----	------

ON CHARACTERISTICS⁽¹⁾

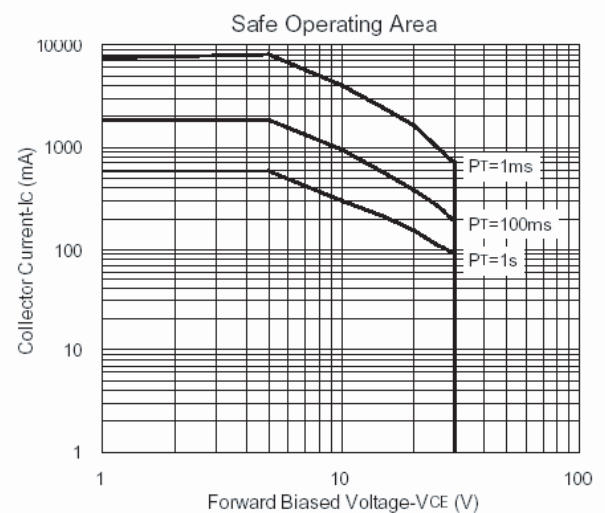
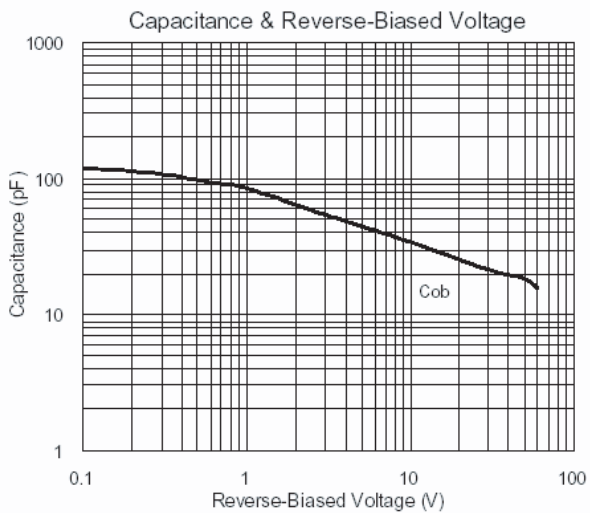
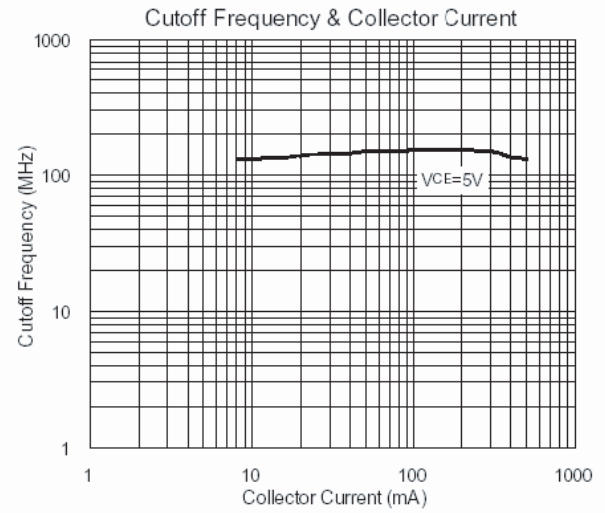
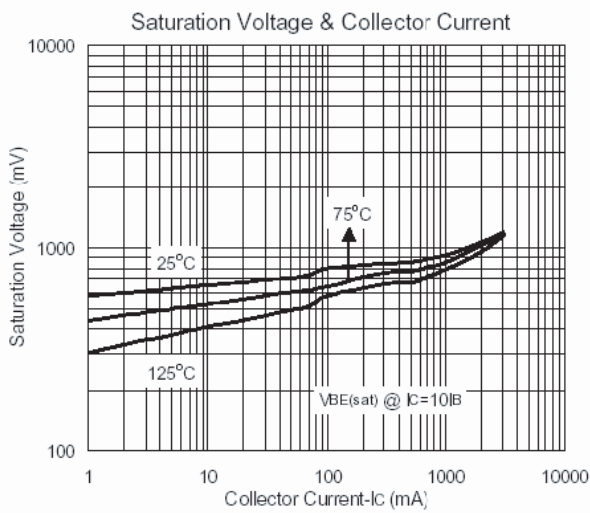
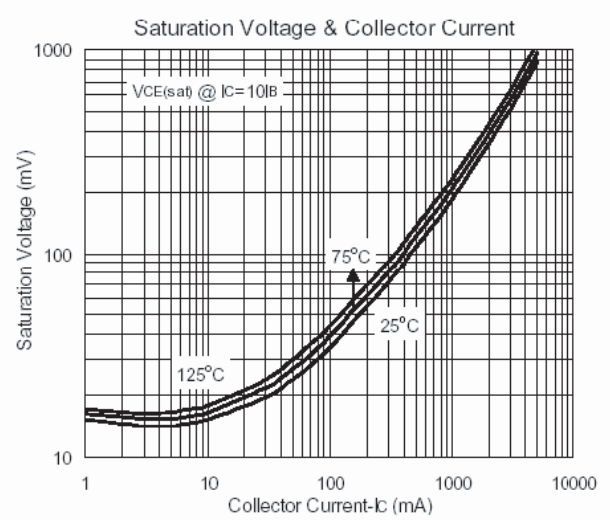
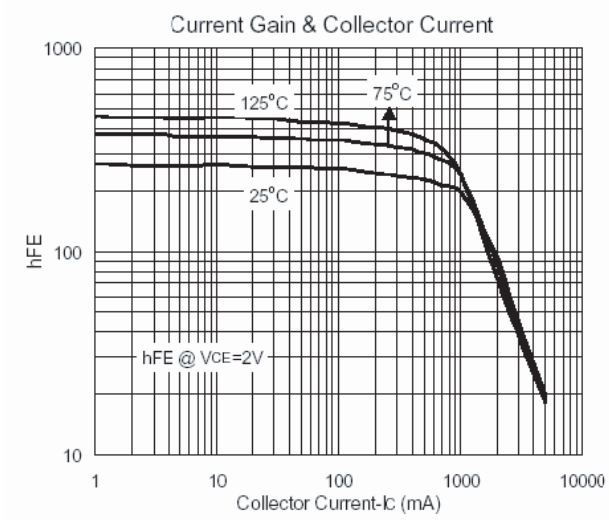
DC Current Gain V _{CE} =-2V, I _C =-20mA V _{CE} =-2V, I _C =-1A	h _{FE1} h _{FE2}	30 100	- 160	- 500	-
Collector-Emitter Saturation Voltage I _C =-2A, I _B =-0.2A	V _{CE(sat)}	-	-0.3	-0.5	V
Base-Emitter On Voltage I _C =-2A, I _B =-0.2A	V _{BE(sat)}	-	-1.0	-2.0	V
Transition Frequency V _{CE} =-20V, I _C =-20mA, f=100MHz	f _T	-	80	-	MHz
Output Capacitance V _{CB} =-10V, I _E =0, f=1MHz	C _{ob}	-	55	-	pF

Note 1. Pulse Test : Pulse width < 380μs, Duty cycle ≤ 2%.

CLASSIFICATION of h_{FE2}

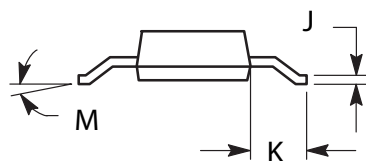
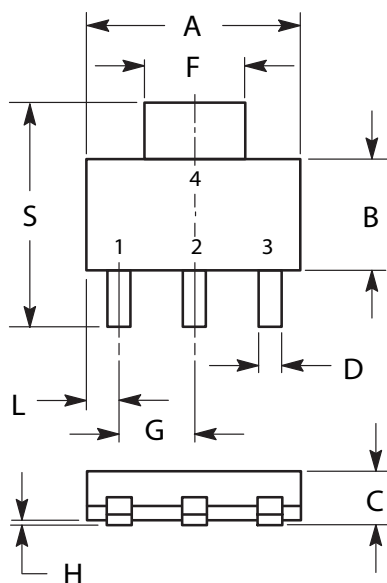
Rank	Q	P	E
Range	100-200	160-320	250-500

Typical Characteristics



SOT-223 Outline Dimensions

unit:mm



DIM	MILLIMETERS	
	MIN	MAX
A	6.30	6.70
B	3.30	3.70
C	1.50	1.75
D	0.60	0.89
F	2.90	3.20
G	2.20	2.40
H	0.020	0.100
J	0.24	0.35
K	1.50	2.00
L	0.85	1.05
M	0°	10°
S	6.70	7.30