

Schottky Barrier Rectifier

General Description

The SDB30A40 surface mounted Schottky rectifier has been designed for applications requiring low forward drop and very small foot prints on PC boards. Typical applications are in disk drives, switching power supplies, converters, free-wheeling diodes, battery charging, and reverse battery protection.



SOD-106

Features and Benefits

- Low forward drop voltage and low reverse leakage current
- Low power rectified
- “Green” device and RoHS compliant device
- Available in full lead (Pb)-free device



Applications

- Portable equipment battery applications
- Switching mode power supplies applications

Ordering Information

Part Number	Marking Code	Package	Packaging
SDB30A40	3A40	SOD-106	Tape & Reel

Marking Information



3A40 = Specific Device Code

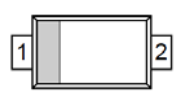
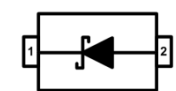
YWW = Year & Week Code Marking

-. Y = Year Code

-. WW = Week Code

■ = Color band denote cathode

Pinning Information

Pin	Description	Simplified Outline	Graphic Symbol
1	Cathode		
2	Anode		

Absolute Maximum Ratings ($T_{amb}=25^{\circ}\text{C}$, Unless otherwise specified)

Characteristic	Symbol	Ratings	Unit
Reverse voltage	V_R	40	V
Forward current	I_F	3	A
Non-repetitive peak forward current (60Hz)	I_{FSM}	70	A
Junction temperature	T_J	150	$^{\circ}\text{C}$
Storage temperature range	T_{stg}	-55 ~ 150	$^{\circ}\text{C}$

Electrical Characteristics ($T_{amb}=25^{\circ}\text{C}$, Unless otherwise specified)

Characteristic	Symbol	Test Condition	Min.	Typ.	Max.	Unit
Forward voltage	V_F ¹⁾	$I_F=3\text{A}$	-	0.5	0.55	V
Reverse current	I_R ²⁾	$V_R=40\text{V}$	-	-	0.5	mA
Thermal Resistance	$R_{th(j-a)}$ ³⁾	Junction to ambient	-	-	76	$^{\circ}\text{C}/\text{W}$
Total capacitance	C_T	$V_R=10\text{V}, f=1\text{MHz}$	-	110	-	pF

¹⁾ Pulse test: $t_p \leq 380\mu\text{s}$, Duty cycle $\leq 2\%$

²⁾ Pulse test: $t_p \leq 5\text{ms}$, Duty cycle $\leq 2\%$

³⁾ Device mounted on glass epoxy PCB (recommanderable minimum solder land)

Rating and Characteristic Curves

Fig. 1 $I_F - V_F$

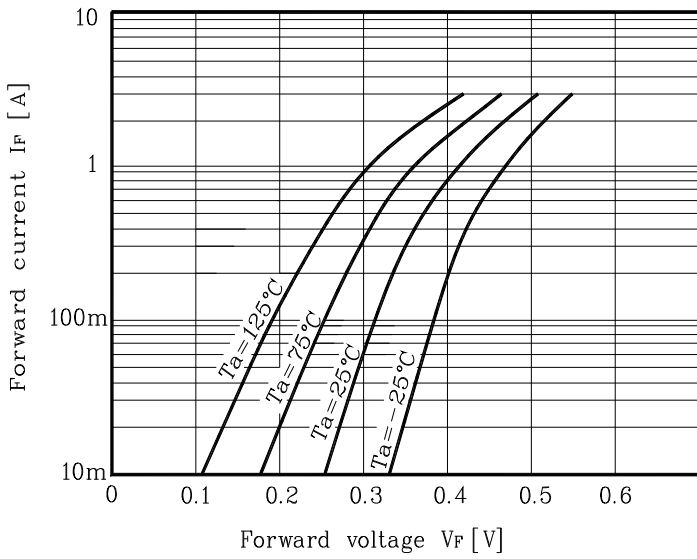


Fig. 2 $I_R - V_R$

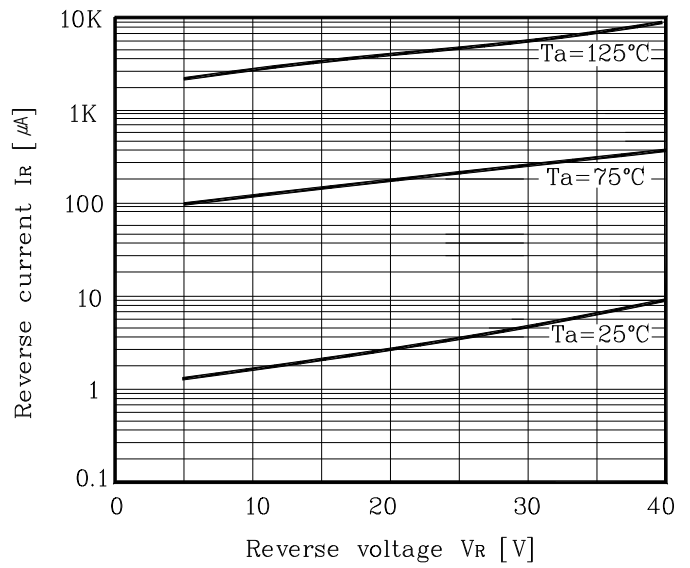


Fig. 3 $C_T - V_R$

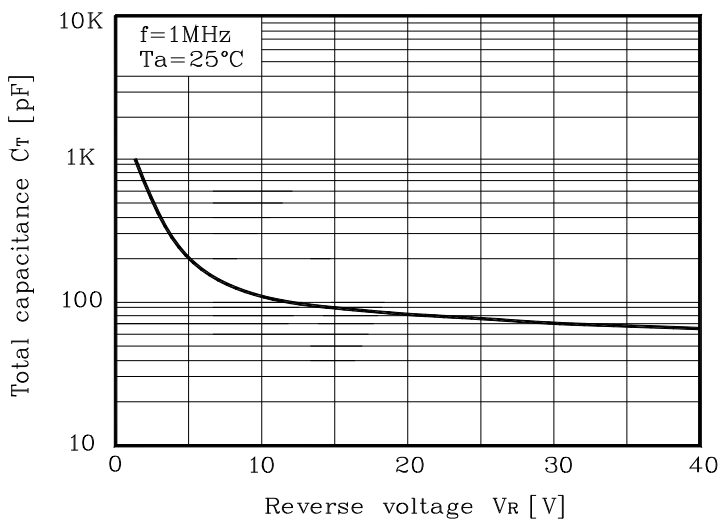
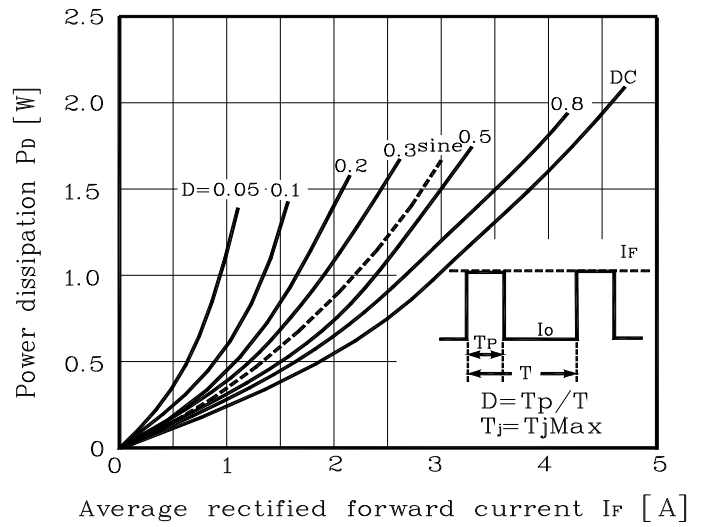
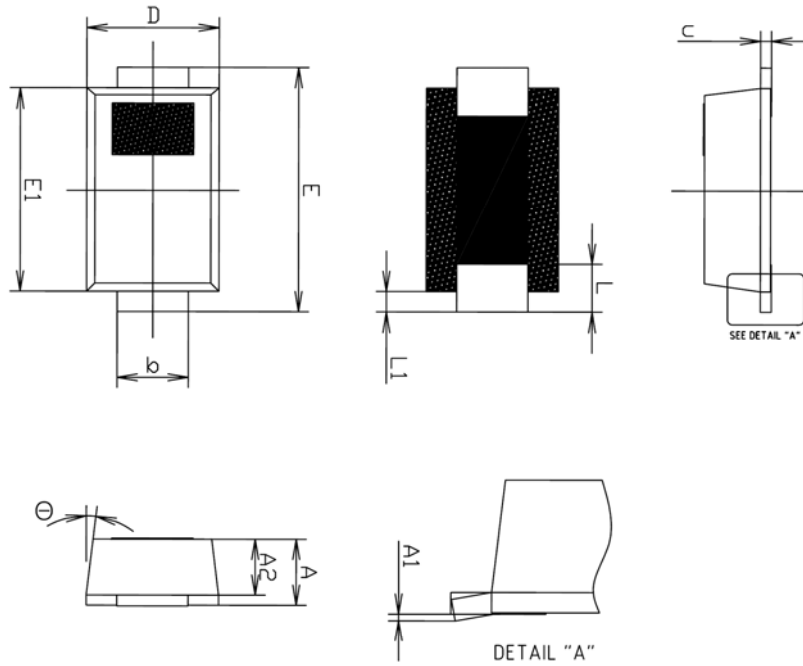


Fig. 4 $P_D - I_F$

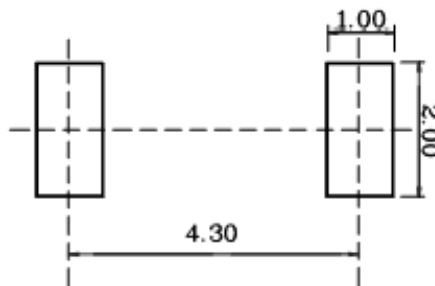


Package Outline Dimensions



SYMBOL	MILLIMETERS			NOTE
	MINIMUM	NOMINAL	MAXIMUM	
A	1.25	1.30	1.35	
A1	0.00	—	0.10	
A2	1.05	1.10	1.15	
b	1.35	1.42	1.49	
c	0.17	0.22	0.27	
D	2.50	2.60	2.70	
E	4.60	4.80	5.00	
E1	3.90	4.00	4.10	
L	0.79	0.94	1.09	
L1	0.30	0.40	0.50	
\ominus	4°	—	10°	

※ Recommend PCB solder land (Unit: mm)



The AUK Corp. products are intended for the use as components in general electronic equipment (Office and communication equipment, measuring equipment, home appliance, etc.).

Please make sure that you consult with us before you use these AUK Corp. products in equipments which require high quality and / or reliability, and in equipments which could have major impact to the welfare of human life(atomic energy control, airplane, spaceship, transportation, combustion control, all types of safety device, etc.). AUK Corp. cannot accept liability to any damage which may occur in case these AUK Corp. products were used in the mentioned equipments without prior consultation with AUK Corp..

Specifications mentioned in this publication are subject to change without notice.