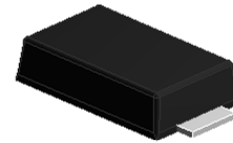


## Features

- Total power dissipation: max, 1.0W
- For use in stabilizing and clipping circuits with high power rating
- Low leakage current
- Moisture sensitivity: level 1, per J-STD-020
- Solder dip 260 °C, 10 s
- Low profile , typical thickness 1.0mm



eSGB

## Maximum Ratings and Thermal Characteristics

(TA = 25 °C unless otherwise noted)

PARAMETER	SYMBOL	Value	UNIT
Zener current		See Next Table	
Power dissipation at Tamb=50	Ptot	1	W
Maximum instantaneous forward voltage at 200mA	V <sub>F</sub>	1.2	V
Thermal resistance junction to ambient air	Rthja	85	/W
Operating junction and storage temperature range	TJ, TSTG	-65 to +175	

## Electrical Characteristics

(TA = 25 °C unless otherwise noted)

Part Number	Zener voltage		Test current	Dynamic impedance	Knee current	Knee impedance	Reverse current	Reverse voltage	Max.DC current
	VZ /V								
	Vz(MIN)	Vz(MAX)	m A	Ω	m A	Ω	μA <sub>dc</sub>	V	m A
L1N4728	3.135	3.465	76	10	1	400	100	1	276
L1N4729	3.42	3.78	69	10	1	400	100	1	252
L1N4730	3.705	4.095	64	9	1	400	50	1	234
L1N4731	4.085	4.515	58	9	1	400	10	1	217
L1N4732	4.465	4.935	53	8	1	500	10	1.5	193
L1N4733	4.845	5.355	49	7	1	550	10	2	178
L1N4734	5.32	5.88	45	5	1	600	10	3	162
L1N4735	5.89	6.51	41	2	1	700	10	4	146
L1N4736	6.46	7.14	37	3.5	1	700	10	5.2	133
L1N4737	7.125	7.875	34	4	0.5	700	10	6	121
L1N4738	7.79	8.61	31	4.5	0.5	700	10	6.5	110



# L1N4728 thru LZ1200

Surface Mount Zener Diodes

Vz Range:3.3 to 200V Power Dissipation:1W

## Electrical Characteristics

(TA = 25 °C unless otherwise noted)

Part Number	Zener voltage		Test current	Dynamic impedance	Knee current	Knee impedance	Reverse current	Reverse voltage	Max.DC current
	VZ /V								
	Vz(MIN)	Vz(MAX)	m A	Ω	m A	Ω	μA <sub>dc</sub>	V	m A
L1N4739	8.645	9.555	28	5	0.5	700	10	7	100
L1N4740	9.5	10.5	25	7	0.25	700	10	8	91
L1N4741	10.45	11.55	23	8	0.25	700	5	8.4	83
L1N4742	11.4	12.6	21	9	0.25	700	5	9.1	76
L1N4743	12.35	13.65	19	10	0.25	700	5	9.9	69
L1N4744	14.25	15.75	17	14	0.25	700	5	11.4	61
L1N4745	15.2	16.8	15.5	16	0.25	700	5	12.2	57
L1N4746	17.1	18.9	14	20	0.25	750	5	13.7	50
L1N4747	19	21	12.5	22	0.25	750	5	15.2	45
L1N4748	20.9	23.1	11.5	23	0.25	750	5	16.7	41
L1N4749	22.8	25.2	10.5	25	0.25	750	5	18.2	38
L1N4750	25.65	28.35	9.5	35	0.25	750	5	20.6	34
L1N4751	28.5	31.5	8.5	40	0.25	1000	5	22.8	30
L1N4752	31.35	34.65	7.5	45	0.25	1000	5	25.1	27
L1N4753	34.2	37.8	7	50	0.25	1000	5	27.4	25
L1N4754	37.05	40.95	6.5	60	0.25	1000	5	29.7	23
L1N4755	40.85	45.15	6	70	0.25	1500	5	32.7	22
L1N4756	44.65	49.35	5.5	80	0.25	1500	5	35.8	19
L1N4757	48.45	53.55	5	95	0.25	1500	5	38.8	18
L1N4758	53.2	58.8	4.5	110	0.25	2000	5	42.6	16
L1N4759	58.9	65.1	4	125	0.25	2000	5	47.1	14
L1N4760	64.6	71.4	3.7	150	0.25	2000	5	51.7	13
L1N4761	71.25	78.8	3.3	175	0.25	2000	5	56	12
L1N4762	77.9	86.1	3	200	0.25	3000	5	62.2	11
L1N4763	86.45	95.6	2.8	250	0.25	3000	5	69.2	10
L1N4764	95	105	2.5	350	0.25	3000	5	76	9
LZ1110	104.5	115.5	2.3	450	0.25	4000	5	83.6	8.6
LZ1120	114	126	2	550	0.25	4500	5	91.2	7.8
LZ1130	123.5	136.5	1.9	700	0.25	5000	5	98.8	7
LZ1150	142.5	157.5	1.7	1000	0.25	6000	5	114	6.4
LZ1160	152	168	1.6	1100	0.25	6500	5	121.6	5.8
LZ1180	171	189	1.4	1200	0.25	7000	5	136.8	5.2
LZ1200	190	210	1.2	1900	0.25	9990	5	152	4.7

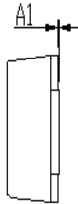
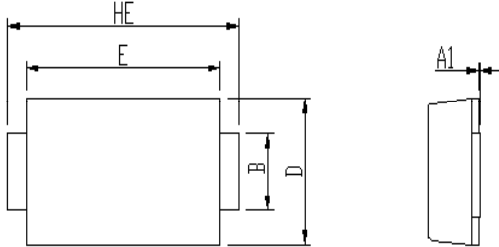


# L1N4728 thru LZ1200

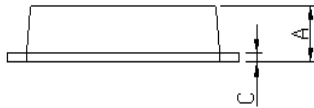
Surface Mount Zener Diodes

Vz Range:3.3 to 200V Power Dissipation:1W

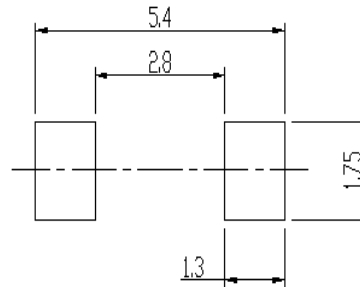
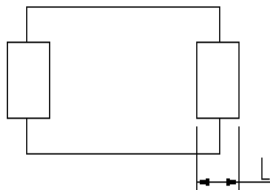
## PACKAGE OUTLINE DIMENSIONS (in millimeters)



DIM	Unit: mm		Unit: inch	
	MIN	MAX	MIN	MAX
A	0.9	1.08	0.035	0.043
A1	0	0.1	0.000	0.004
B	1.25	1.45	0.049	0.057
C	0.1	0.25	0.004	0.010
D	2.6	2.8	0.102	0.110
E	4.1	4.3	0.161	0.169
L	0.7	1.1	0.028	0.043
HE	4.8	5.2	0.189	0.205



Soldering footprint



## PACKING INFORMATION

Packing quantities:

3000 pcs/Reel , 12mm Tape, 13" Reel

Tape & Reel Specification

