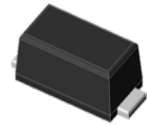


Features

- Glass passivated superfast recovery Rectifiers
- Very low profile - typical height of 1.0 mm
- Low forward voltage drop
- Low leakage current
- Moisture sensitivity: level 1, per J-STD-020
- AEC-Q101 qualified
- High temperature soldering guaranteed: 260 /10 seconds
- Halogen-free according to IEC 61249-2-21 definition



RoHS
COMPLIANT



eSGA
(SOD-123FL)

TYPICAL APPLICATIONS

For use of general purpose rectification in lighting, cellular phone, portable device, power supplies and other consumer applications.

MAXIMUM RATINGS (TA = 25 °C unless otherwise noted)			
PARAMETER	SYMBOL	FU4	UNIT
Maximum repetitive peak reverse voltage	V _{RRM}	400	V
Maximum RMS voltage	V _{RMS}	280	V
Maximum DC blocking voltage	V _{DC}	400	V
Maximum average forward rectified current	I _{F(AV)}	1	A
Peak forward surge current 8.3 ms single half sine-wave superimposed on rated load	I _{FSM}	30	A
Operating junction and storage temperature range	T _J , T _{STG}	- 55 to + 150	°C

ELECTRICAL CHARACTERISTICS (TA = 25 °C unless otherwise noted)				
PARAMETER	TEST CONDITIONS	SYMBOL	FU4	UNIT
Maximum instantaneous forward voltage	1 A	V _F	1.3	Volts
Maximum DC reverse current at rated DC blocking voltage	TA=25	I _R	5.0	μA
	TA=125		100	
Maximum reverse recovery time	I _F =0.5A, I _R =1.0A, I _{rr} =0.25A	t _{rr}	35	nS
Typical junction capacitance	4.0 V, 1 MHz	C _J	17	pF
Typical thermal resistance ¹⁾	junction to ambient	R _{θJA}	66	°C/W
	junction to case	R _{θJC}	32	
	junction to mount	R _{θJM}	1	

Note:1),The thermal resistance from junction to ambient,case or mount,mounted on P.C.B with 5x5mm copper pads,2 OZ,FR4 PCB

RATINGS AND CHARACTERISTICS CURVES

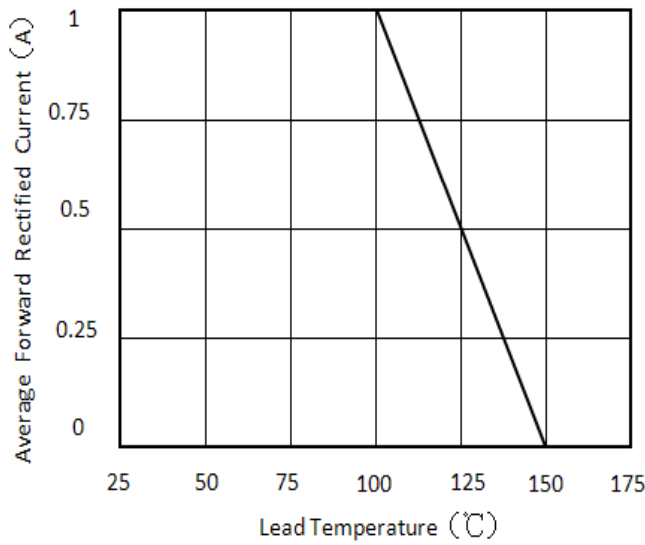


Figure 1. Forward Current Derating Curve

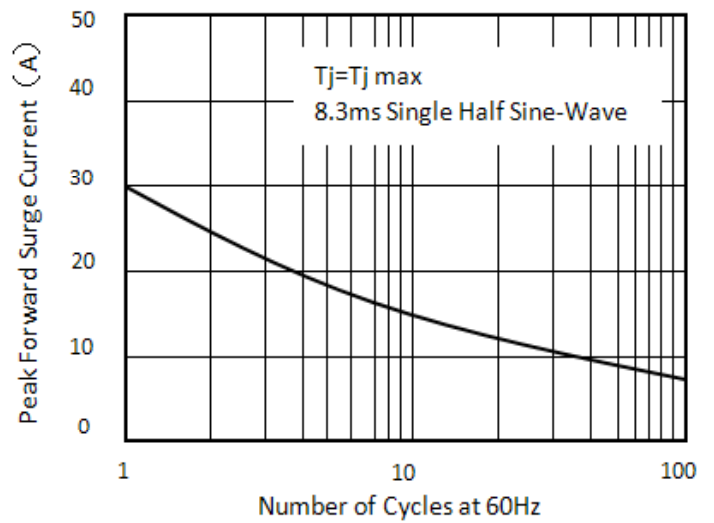


Figure 2. Maximum Non-Repetitive Peak Forward Surge Current

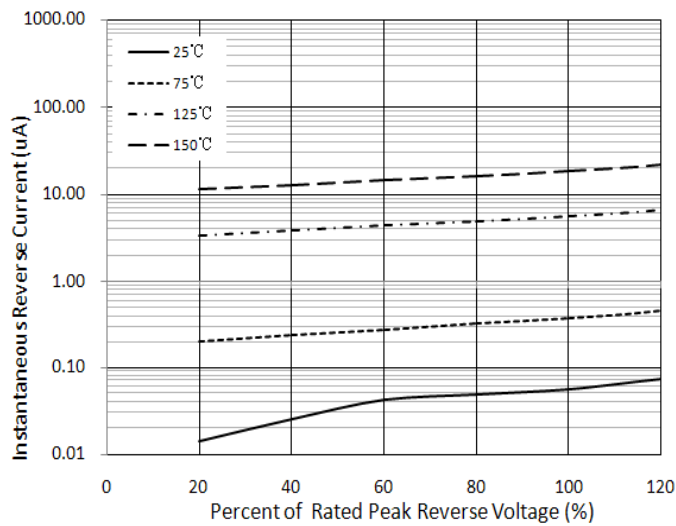


Figure 3. Typical Reverse Characteristics

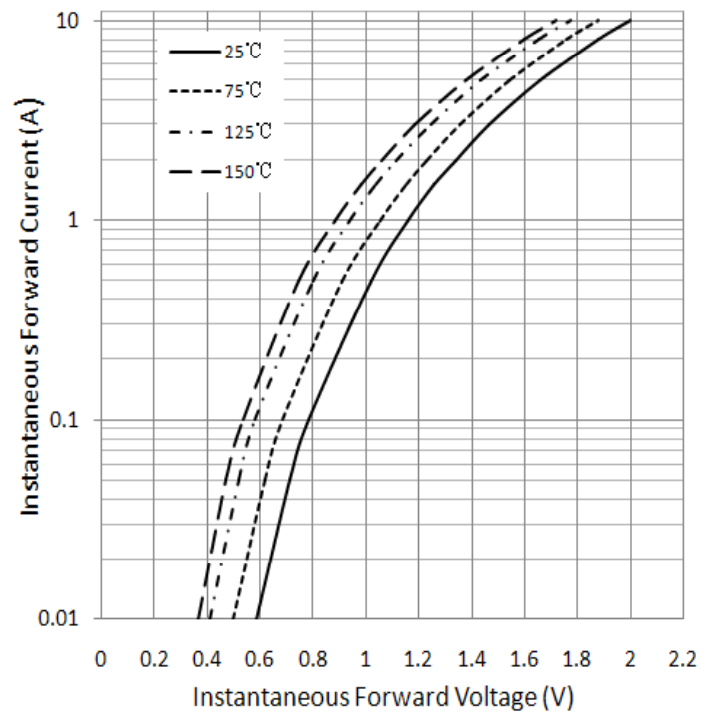
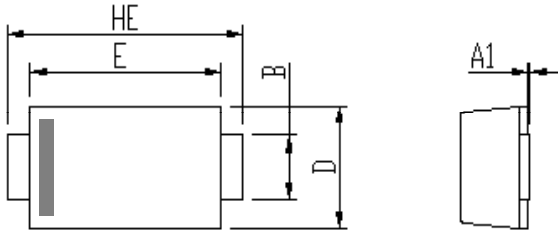
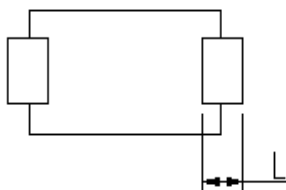
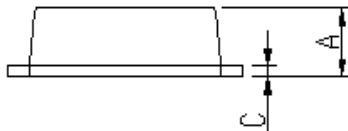


Figure 4. Typical Instantaneous Forward Characteristics

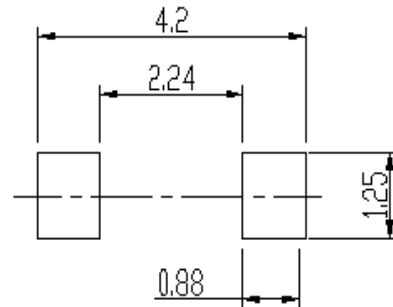
PACKAGE OUTLINE DIMENSIONS



DIM	Unit: mm		Unit: inch	
	MIN	MAX	MIN	MAX
A	0.9	1.08	0.035	0.043
A1	0	0.1	0.000	0.004
B	0.85	1.05	0.033	0.041
C	0.1	0.25	0.004	0.010
D	1.7	2	0.067	0.079
E	2.9	3.1	0.114	0.122
L	0.43	0.83	0.017	0.033
HE	3.5	3.9	0.138	0.154



Soldering footprint



PACKING INFORMATION

Packing quantities:

3000 pcs/Reel, 40 Reels/Box; 8mm Tape, 7" Reel

Tape & Reel Specification

