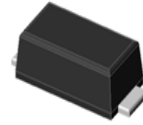


Features

- Glass passivated superfast recovery Rectifiers
- Very low profile - typical height of 1.0 mm
- Low forward voltage drop
- Low leakage current
- Moisture sensitivity: level 1, per J-STD-020
- AEC-Q101 qualified
- High temperature soldering guaranteed: 260 /10 seconds
- Halogen-free according to IEC 61249-2-21 definition



RoHS
COMPLIANT



eSGA
(SOD-123FL)

TYPICAL APPLICATIONS

For use of general purpose rectification in lighting, cellular phone, portable device, power supplies and other consumer applications.

MAXIMUM RATINGS (TA = 25 °C unless otherwise noted)					
PARAMETER	SYMBOL	FU1	FU2	FU3	UNIT
Maximum repetitive peak reverse voltage	VRRM	50	100	200	V
Maximum RMS voltage	VRMS	35	70	140	V
Maximum DC blocking voltage	VDC	50	100	200	V
Maximum average forward rectified current	IF(AV)	1.0			A
Peak forward surge current 8.3 ms single half sine-wave superimposed on rated load	IFSM	30			A
Operating junction and storage temperature range	TJ, TSTG	- 55 to + 150			°C

ELECTRICAL CHARACTERISTICS (TA = 25 °C unless otherwise noted)						
PARAMETER	TEST CONDITIONS	SYMBOL	FU1	FU2	FU3	UNIT
Maximum instantaneous forward voltage	1 A	VF	1.0			Volts
Maximum DC reverse current at rated DC blocking voltage	TA=25 TA=125	IR	5.0 100			µA
Maximum reverse recovery time	IF=0.5A, IR=1.0A, Irr=0.25A	trr	35			nS
Typical junction capacitance	4.0 V, 1 MHz	CJ	17			pF
Typical thermal resistance ¹⁾	junction to ambient	RθJA	66			°C/W
	junction to case	RθJC	32			
	junction to mount	RθJM	1			

Note:1),The thermal resistance from junction to ambient,case or mount,mounted on P.C.B with 5x5mm copper pads,2 OZ,FR4 PCB

RATINGS AND CHARACTERISTICS CURVES

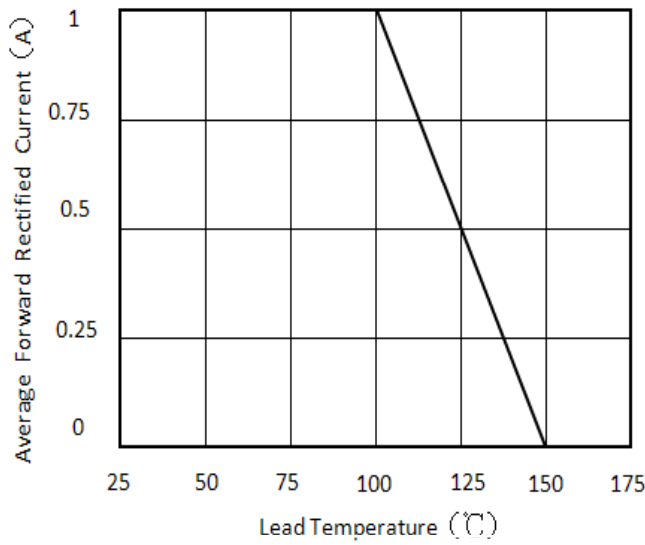


Figure 1. Forward Current Derating Curve

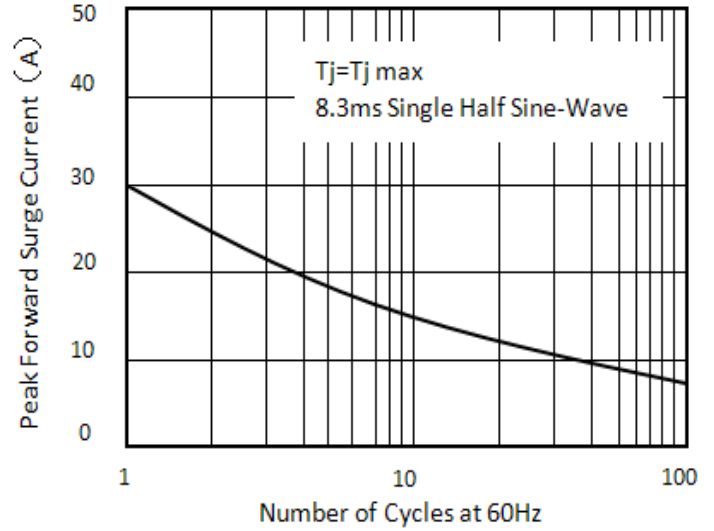


Figure 2. Maximum Non-Repetitive Peak Forward Surge Current

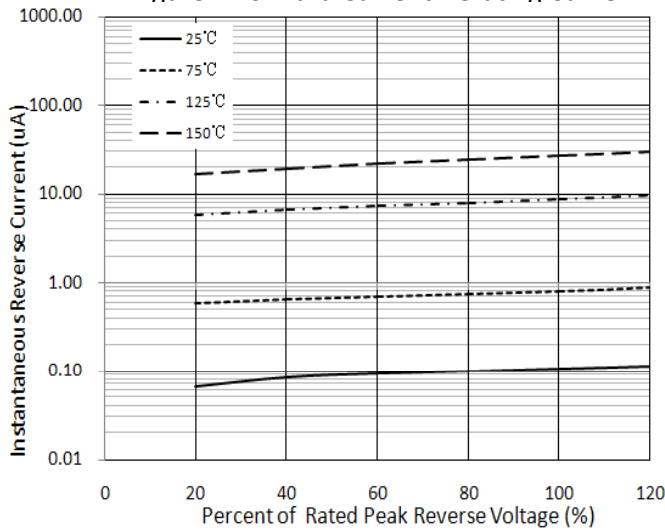


Figure 3. Typical Reverse Characteristics

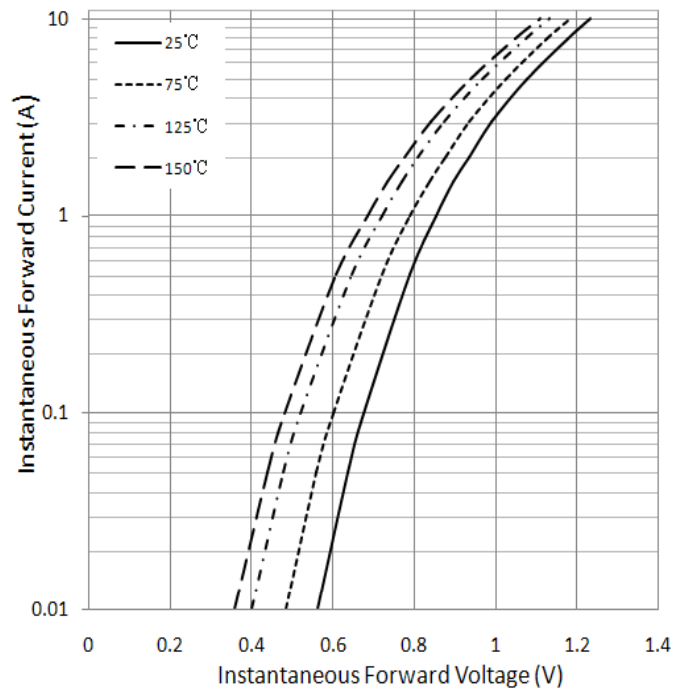
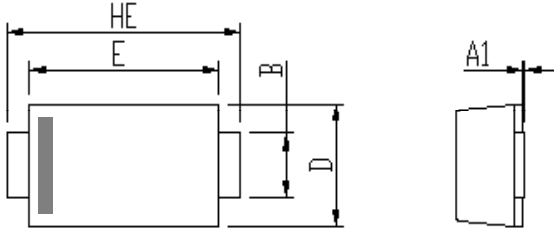
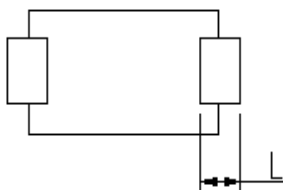
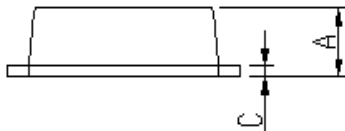


Figure 4. Typical Instantaneous Forward Characteristics

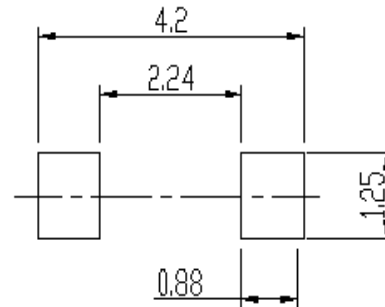
PACKAGE OUTLINE DIMENSIONS



DIM	Unit: mm		Unit: inch	
	MIN	MAX	MIN	MAX
A	0.9	1.08	0.035	0.043
A1	0	0.1	0.000	0.004
B	0.85	1.05	0.033	0.041
C	0.1	0.25	0.004	0.010
D	1.7	2	0.067	0.079
E	2.9	3.1	0.114	0.122
L	0.43	0.83	0.017	0.033
HE	3.5	3.9	0.138	0.154



Soldering footprint



PACKING INFORMATION

Packing quantities:

3000 pcs/Reel, 40 Reels/Box; 8mm Tape, 7" Reel

Tape & Reel Specification

