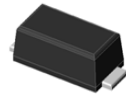


### Features

- Schottky barrier diodes
- Compatible with SOD-123
- Low forward voltage drop
- Low leakage current
- Moisture sensitivity: level 1, per J-STD-020
- AEC-Q101 qualified
- Low profile, Max height 1.08mm



eSGA

### TYPICAL APPLICATIONS

For use of fast switching in RF module, lighting, cellular phone, portable device, power supplies and other consumer applications.

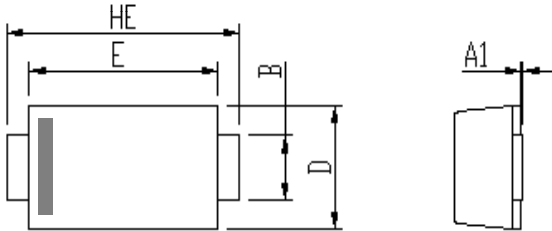
MAXIMUM RATINGS (T <sub>A</sub> = 25 °C unless otherwise noted)									
PARAMETER	SYMBOL	FS22N	FS22NS	FSL23	FSL23S	FSL24	FS24N	FSL26	UNIT
Maximum repetitive peak reverse voltage	V <sub>RRM</sub>	20	20	30	30	40	40	60	V
Maximum RMS voltage	V <sub>RMS</sub>	14	14	21	21	28	28	42	V
Maximum DC blocking voltage	V <sub>DC</sub>	20	20	30	30	40	40	60	V
Maximum average forward rectified current	I <sub>F(AV)</sub>	2.0							A
Peak forward surge current 8.3 ms single half sine-wave superimposed on rated load	I <sub>FSM</sub>	50				80		50	A
Operating junction and storage temperature range	T <sub>J</sub> , T <sub>STG</sub>	- 55 to + 125							°C

ELECTRICAL CHARACTERISTICS (T <sub>A</sub> = 25 °C unless otherwise noted)										
PARAMETER	TEST CONDITIONS	SYMBOL	FS22N	FS22NS	FSL23	FSL23S	FSL24	FS24N	FSL26	UNIT
Maximum instantaneous forward voltage	2 A	V <sub>F</sub>	0.43	0.45	0.4	0.43	0.43	0.45	0.55	Volts
Maximum DC reverse current at rated DC blocking voltage	T <sub>A</sub> =25	I <sub>R</sub>	0.5	0.5	1	0.5	1	1	2	mA
	T <sub>A</sub> =100									
Typical junction capacitance	4.0 V, 1 MHz	C <sub>J</sub>								pF
Typical thermal resistance	junction to lead	R <sub>θJL</sub>	20							°C/W

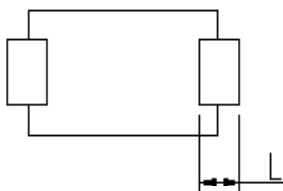
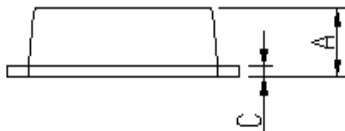
## RATINGS AND CHARACTERISTICS CURVES

(TBD)

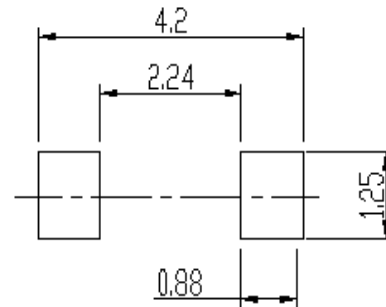
## PACKAGE OUTLINE DIMENSIONS



DIM	Unit: mm		Unit: inch	
	MIN	MAX	MIN	MAX
A	0.9	1.08	0.035	0.043
A1	0	0.1	0.000	0.004
b	0.85	1.05	0.033	0.041
c	0.1	0.25	0.004	0.010
D	1.7	2	0.067	0.079
E	2.9	3.1	0.114	0.122
L	0.43	0.83	0.017	0.033
HE	3.5	3.9	0.138	0.154



Soldering footprint



## PACKING INFORMATION

**Packing quantities:**

3000 pcs/Reel, 40 Reels/Box; 8mm Tape, 7" Reel

**Tape & Reel Specification**

