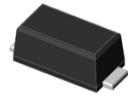


### Features

- Schottky barrier diodes
- Compatible with SOD-123
- Low forward voltage drop
- Low leakage current
- Moisture sensitivity: level 1, per J-STD-020
- AEC-Q101 qualified
- Low profile, Max height 1.08mm



eSGA

### TYPICAL APPLICATIONS

For use of fast switching in RF module, lighting, cellular phone, portable device, power supplies and other consumer applications.

MAXIMUM RATINGS (TA = 25 °C unless otherwise noted)										
PARAMETER	SYMBOL	FS12	FS14	FS16	FS1B	FS1BH	FS1B5H	FS1CH	UNIT	
Maximum repetitive peak reverse voltage	VRRM	20	40	60	100	100	150	200	V	
Maximum RMS voltage	VRMS	14	28	42	70	70	105	140	V	
Maximum DC blocking voltage	VDC	20	40	60	100	100	150	200	V	
Maximum average forward rectified current	IF(AV)	1.0								A
Peak forward surge current 8.3 ms single half sine-wave superimposed on rated load	IFSM	40			30					A
Operating junction and storage temperature range	TJ, TSTG	- 55 to + 150				- 55 to + 175				°C

ELECTRICAL CHARACTERISTICS (TA = 25 °C unless otherwise noted)											
PARAMETER	TEST CONDITIONS	SYMBOL	FS12	FS14	FS16	FS1B	FS1BH	FS1B5H	FS1CH	UNIT	
Maximum instantaneous forward voltage	1 A	VF	0.45	0.53	0.65	0.8	0.8	0.85	0.85	Volts	
Maximum DC reverse current at rated DC blocking voltage	TA=25	IR	0.3			0.2				mA	
	TA=125		10								
Typical junction capacitance	4.0 V, 1 MHz	CJ	110								pF
Typical thermal resistance	junction to lead	REJL	20								°C/W



# FS12 thru FS1CH

Surface Mount Schottky Rectifier

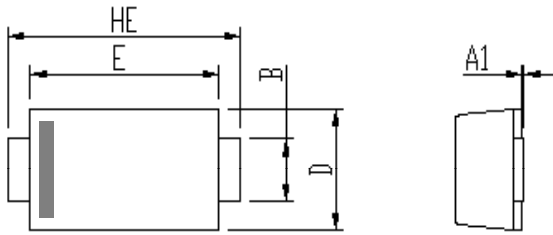
Reverse Voltage 20~200V Forward Current 1A

---

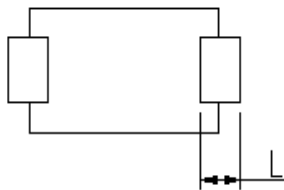
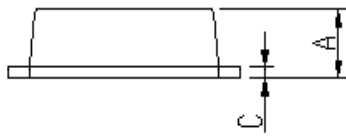
## RATINGS AND CHARACTERISTICS CURVES

(TBD)

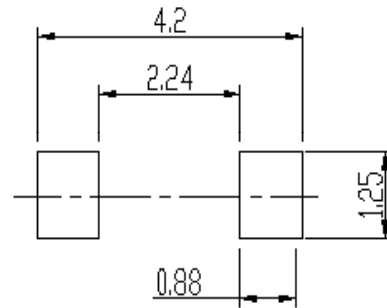
## PACKAGE OUTLINE DIMENSIONS



DIM	Unit: mm		Unit: inch	
	MIN	MAX	MIN	MAX
A	0.9	1.08	0.035	0.043
A1	0	0.1	0.000	0.004
b	0.85	1.05	0.033	0.041
c	0.1	0.25	0.004	0.010
D	1.7	2	0.067	0.079
E	2.9	3.1	0.114	0.122
L	0.43	0.83	0.017	0.033
HE	3.5	3.9	0.138	0.154



Soldering footprint



## PACKING INFORMATION

### Packing quantities:

3000 pcs/Reel, 40 Reels/Box; 8mm Tape, 7" Reel

### Tape & Reel Specification

