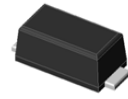


Features

- Super Low VF Schottky barrier diodes
- Compatible with SOD-123
- Moisture sensitivity: level 1, per J-STD-020
- AEC-Q101 qualified
- Low profile, Max height 1.08mm



eSGA

TYPICAL APPLICATIONS

For use of fast switching in RF module, lighting, cellular phone, portable device, power supplies and other consumer applications.

MAXIMUM RATINGS (TA = 25 °C unless otherwise noted)										
PARAMETER	SYMBOL	FSL12	FSL13	FSL14	FSL15	FSL16	FSL13S	FSL14S	UNIT	
Maximum repetitive peak reverse voltage	V _{RRM}	20	30	40	50	60	30	40	V	
Maximum RMS voltage	V _{RMS}	14	21	28	35	42	21	28	V	
Maximum DC blocking voltage	V _{DC}	20	30	40	50	60	30	40	V	
Maximum average forward rectified current	I _{F(AV)}	1.0								A
Peak forward surge current 8.3 ms single half sine-wave superimposed on rated load	I _{FSM}	40						25	30	A
Operating junction and storage temperature range	T _J , T _{STG}	-55 to +125								°C

ELECTRICAL CHARACTERISTICS (TA = 25 °C unless otherwise noted)											
PARAMETER	TEST CONDITIONS	SYMBOL	FSL12	FSL13	FSL14	FSL15	FSL16	FSL13S	FSL14S	UNIT	
Maximum instantaneous forward voltage	1 A	V _F	0.41	0.4	0.45	0.5	0.55	0.45	0.48	Volts	
Maximum DC reverse current at rated DC blocking voltage	TA=25	I _R	0.5	2	1	0.5	1	0.5	0.5	mA	
	TA=125		10								
Typical junction capacitance	4.0 V, 1 MHz	C _J					110				pF
Typical thermal resistance	junction to lead	R _{θJL}					20				°C/W



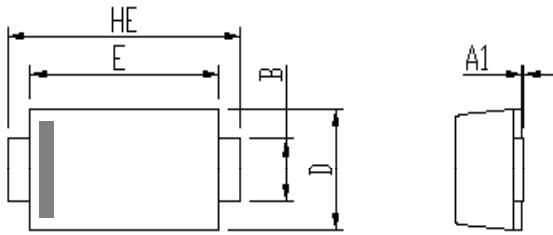
FSL12 thru FSL16

Surface Mount Schottky Rectifier
Reverse Voltage 20~60V Forward Current 1A

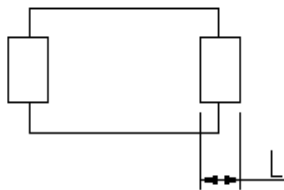
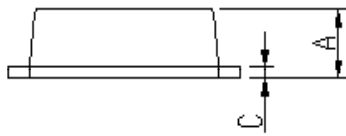
RATINGS AND CHARACTERISTICS CURVES

(TBD)

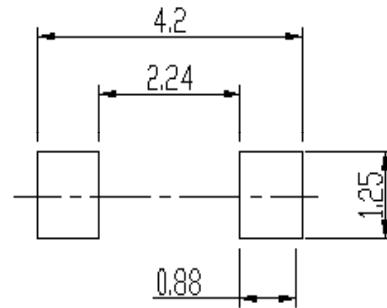
PACKAGE OUTLINE DIMENSIONS



DIM	Unit: mm		Unit: inch	
	MIN	MAX	MIN	MAX
A	0.9	1.08	0.035	0.043
A1	0	0.1	0.000	0.004
b	0.85	1.05	0.033	0.041
c	0.1	0.25	0.004	0.010
D	1.7	2	0.067	0.079
E	2.9	3.1	0.114	0.122
L	0.43	0.83	0.017	0.033
HE	3.5	3.9	0.138	0.154



Soldering footprint



PACKING INFORMATION

Packing quantities:

3000 pcs/Reel, 40 Reels/Box; 8mm Tape, 7" Reel

Tape & Reel Specification

