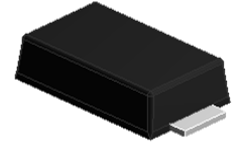


Features

- Schottky barrier diodes
- Low forward voltage drop
- Low leakage current
- Moisture sensitivity: level 1, per J-STD-020
- Solder dip 260 °C, 10 s
- Low profile , typical thickness 1.0mm



eSGB

TYPICAL APPLICATIONS

For use in low voltage,high frequency inverters,free wheeling, and polarity protection application

MAXIMUM RATINGS (TA = 25 °C unless otherwise noted)											
PARAMETER	SYMBOL	LS22	LS23	LS24	LS25	LS26	LS27	LS28	LS29	LS2B	UNIT
Maximum repetitive peak reverse voltage	V _{RRM}	20	30	40	50	60	70	80	90	100	V
Maximum RMS voltage	V _{RMS}	14	21	28	35	42	49	56	63	70	V
Maximum DC blocking voltage	V _{DC}	20	30	40	50	60	70	80	90	100	V
Maximum average forward rectified current at TL (See Fig.1)	I _{F(AV)}	2.0									A
Peak forward surge current 8.3 ms single half sine-wave superimposed on rated load	I _{FSM}	50									A
Operating junction and storage temperature range	T _J , T _{STG}	- 55 to + 150									°C

ELECTRICAL CHARACTERISTICS (TA = 25 °C unless otherwise noted)													
PARAMETER	TEST CONDITIONS	SYMBOL	LS22	LS23	LS24	LS25	LS26	LS27	LS28	LS29	LS2B	UNIT	
Maximum instantaneous forward voltage	I _F =2A, T _j =25	V _F	0.55			0.70		0.85				Volts	
Maximum DC reverse current at rated DC blocking voltage	TA=25	I _R	0.5									mA	
	TA=125		20										
Typical junction capacitance	4.0 V, 1 MHz	C _J	110					60				pF	
Typical thermal resistance	junction to lead	R _{θJL}	15										°C/W

RATINGS AND CHARACTERISTICS CURVES

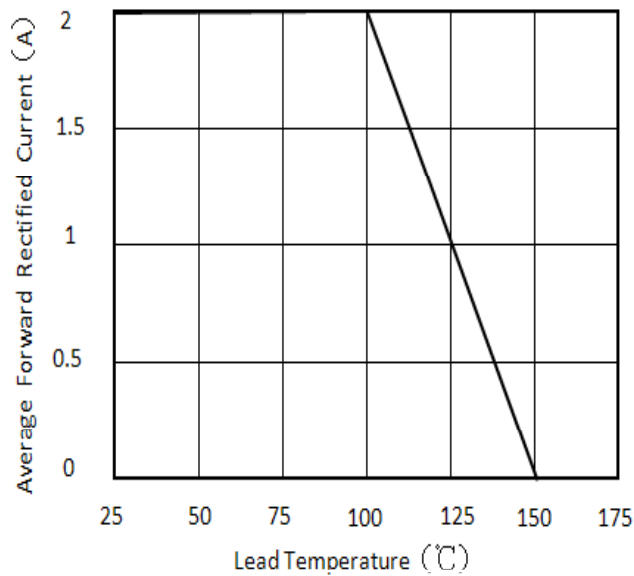


Figure 1. Forward Current Derating Curve

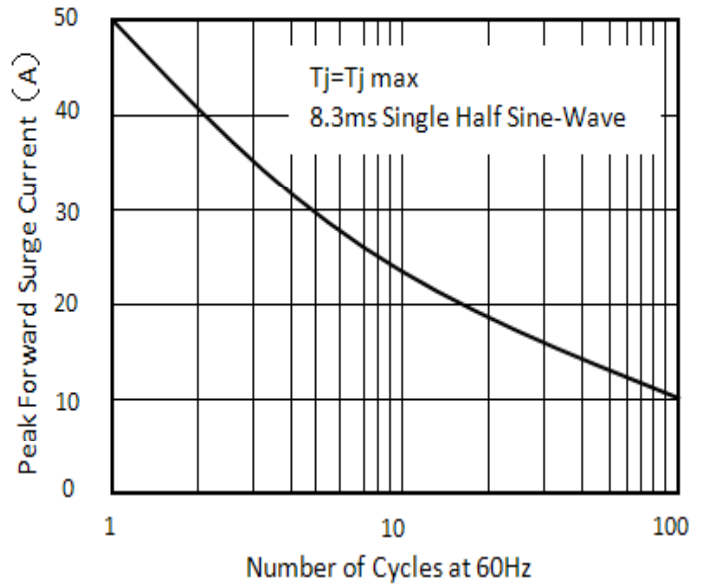


Figure 2. Maximum Non-Repetitive Peak Forward Surge Current

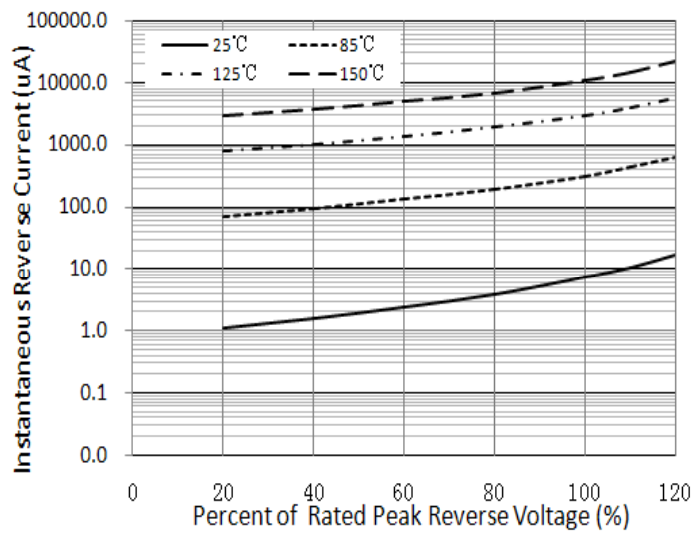


Figure 3. Typical Reverse Characteristics

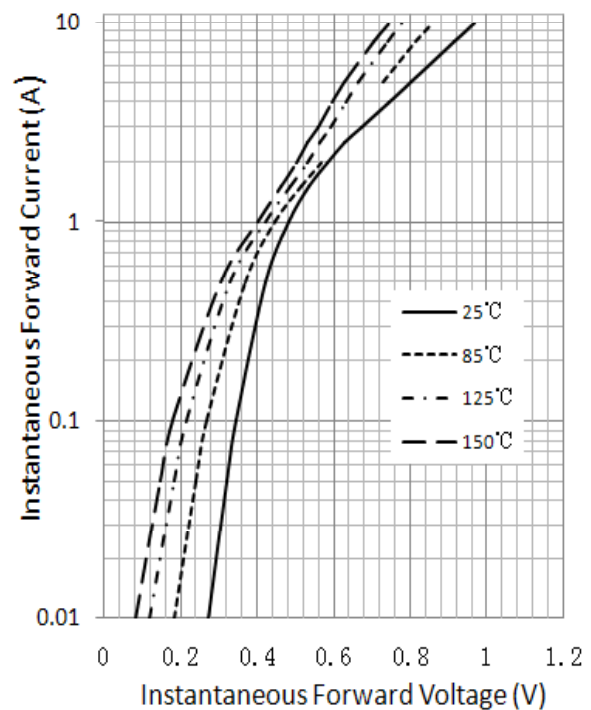
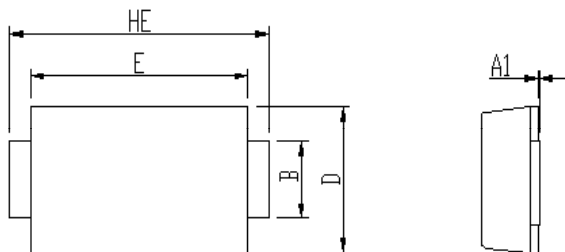
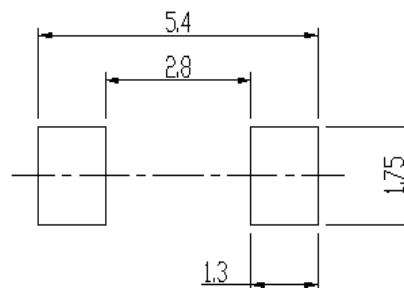
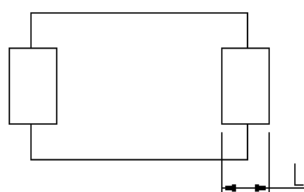
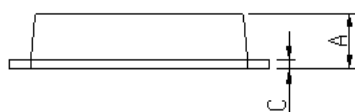


Figure 4. Typical Instantaneous Forward Characteristi

PACKAGE OUTLINE DIMENSIONS (in millimeters)



DIM	Unit: mm		Unit: inch	
	MIN	MAX	MIN	MAX
A	0.92	1.08	0.036	0.043
A1	0	0.1	0.000	0.004
B	1.25	1.45	0.049	0.057
C	0.1	0.25	0.004	0.010
D	2.6	2.8	0.102	0.110
E	4.1	4.3	0.161	0.169
L	0.8	1.0	0.031	0.039
HE	4.8	5.2	0.189	0.205



PACKING INFORMATION

Packing quantities:

3000 pcs/Reel , 12mm Tape, 13" Reel

Tape & Reel Specification

