

# NSBA114EDP6T5G Series

Preferred Devices

## Dual Digital Transistors (BRT)

### PNP Silicon Surface Mount Transistors with Monolithic Bias Resistor Network

This new series of digital transistors is designed to replace a single device and its external resistor bias network. The digital transistor contains a single transistor with a monolithic bias network consisting of two resistors; a series base resistor and a base-emitter resistor. The digital transistor eliminates these individual components by integrating them into a single device. The use of a digital transistor can reduce both system cost and board space. The device is housed in the SOT-963 package which is designed for low power surface mount applications.

#### Features

- Simplifies Circuit Design
- Reduces Board Space
- Reduces Component Count
- The SOT-963 Package can be Soldered using Wave or Reflow.
- Available in 4 mm, 8000 Unit Tape & Reel
- These are Pb-Free Devices
- These are Halide-Free Devices

#### MAXIMUM RATINGS (T<sub>A</sub> = 25°C unless otherwise noted)

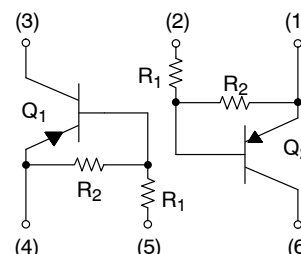
Rating	Symbol	Value	Unit
Collector-Base Voltage	V <sub>CBO</sub>	50	Vdc
Collector-Emitter Voltage	V <sub>CEO</sub>	50	Vdc
Collector Current	I <sub>C</sub>	100	mAdc

Stresses exceeding Maximum Ratings may damage the device. Maximum Ratings are stress ratings only. Functional operation above the Recommended Operating Conditions is not implied. Extended exposure to stresses above the Recommended Operating Conditions may affect device reliability.



ON Semiconductor®

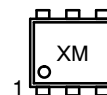
<http://onsemi.com>



#### MARKING DIAGRAM



SOT-963  
CASE 527AD



- X = Specific Device Code
- M = Date Code
- = Pb-Free Package

#### ORDERING INFORMATION

Device	Package	Shipping†
NSBA114EDP6T5G	SOT-963 (Pb-Free)	8000 / Tape & Reel

†For information on tape and reel specifications, including part orientation and tape sizes, please refer to our Tape and Reel Packaging Specifications Brochure, BRD8011/D.

#### DEVICE MARKING INFORMATION

See specific marking information in the device marking table on page 2 of this data sheet.

Preferred devices are recommended choices for future use and best overall value.

# NSBA114EDP6T5G Series

## THERMAL CHARACTERISTICS

Characteristic	Symbol	Max	Unit
<b>SINGLE HEATED</b>			
Total Device Dissipation $T_A = 25^\circ\text{C}$ (Note 1) Derate above $25^\circ\text{C}$	$P_D$	231 1.9	mW mW/ $^\circ\text{C}$
Thermal Resistance (Note 1) Junction-to-Ambient	$R_{\theta JA}$	540	$^\circ\text{C}/\text{W}$
Total Device Dissipation $T_A = 25^\circ\text{C}$ (Note 2) Derate above $25^\circ\text{C}$	$P_D$	269 2.2	mW mW/ $^\circ\text{C}$
Thermal Resistance (Note 2) Junction-to-Ambient	$R_{\theta JA}$	464	$^\circ\text{C}/\text{W}$
<b>DUAL HEATED</b> (Note 3)			
Total Device Dissipation $T_A = 25^\circ\text{C}$ (Note 1) Derate above $25^\circ\text{C}$	$P_D$	339 2.7	mW mW/ $^\circ\text{C}$
Thermal Resistance (Note 1) Junction-to-Ambient	$R_{\theta JA}$	369	$^\circ\text{C}/\text{W}$
Total Device Dissipation $T_A = 25^\circ\text{C}$ (Note 2) Derate above $25^\circ\text{C}$	$P_D$	408 3.3	mW mW/ $^\circ\text{C}$
Thermal Resistance (Note 2) Junction-to-Ambient	$R_{\theta JA}$	306	$^\circ\text{C}/\text{W}$
Junction and Storage Temperature	$T_J, T_{stg}$	-55 to +150	$^\circ\text{C}$

- FR-4 @ 100 mm<sup>2</sup>, 1 oz. copper traces, still air.
- FR-4 @ 500 mm<sup>2</sup>, 1 oz. copper traces, still air.
- Dual heated values assume total power is sum of two equally powered channels.

## ORDERING INFORMATION, DEVICE MARKING AND RESISTOR VALUES

Device	Marking*	R1 (k)	R2 (k)	Package	Shipping <sup>†</sup>
NSBA114EDP6T5G	F (180°)	10	10	SOT-963 (Pb-Free)	8000/Tape & Reel
NSBA124EDP6T5G	E (90°)	22	22		
NSBA144EDP6T5G	E (270°)	47	47		
NSBA114YDP6T5G	Q (0°)	10	47		
NSBA123TDP6T5G	L (90°)	2.2	∞		
NSBA143EDP6T5G	F (90°)	4.7	4.7		
NSBA143ZDP6T5G	K (90°)	4.7	47		
NSBA123JDP6T5G	P (90°)	2.2	47		
NSBA144WDP6T5G	J (90°)	47	22		
NSBA114TDP6T5G	T (180°)	10	∞		
NSBA115TDP6T5G	V (180°)	100	∞		

<sup>†</sup>For information on tape and reel specifications, including part orientation and tape sizes, please refer to our Tape and Reel Packaging Specification Brochure, BRD8011/D.

\*(XX°) = Degree rotation in the clockwise direction.

## NSBA114EDP6T5G Series

### ELECTRICAL CHARACTERISTICS ( $T_A = 25^\circ\text{C}$ unless otherwise noted)

Characteristic	Symbol	Min	Typ	Max	Unit
<b>OFF CHARACTERISTICS</b>					
Collector–Base Cutoff Current ( $V_{CB} = 50\text{ V}$ , $I_E = 0$ )	$I_{CBO}$	–	–	100	nAdc
Collector–Emitter Cutoff Current ( $V_{CE} = 50\text{ V}$ , $I_B = 0$ )	$I_{CEO}$	–	–	500	nAdc
Emitter–Base Cutoff Current ( $V_{EB} = 6.0\text{ V}$ , $I_C = 0$ )	$I_{EBO}$	–	–	0.5	mAdc
NSBA114EDP6T5G		–	–	0.2	
NSBA124EDP6T5G		–	–	0.1	
NSBA144EDP6T5G		–	–	0.2	
NSBA114YDP6T5G		–	–	4.0	
NSBA123TDP6T5G		–	–	0.9	
NSBA114TDP6T5G		–	–	1.5	
NSBA143EDP6T5G		–	–	0.1	
NSBA115TDP6T5G		–	–	0.18	
NSBA143ZDP6T5G		–	–	0.2	
NSBA123JDP6T5G		–	–	0.13	
NSBA144WDP6T5G		–	–		
Collector–Base Breakdown Voltage ( $I_C = 10\ \mu\text{A}$ , $I_E = 0$ )	$V_{(BR)CBO}$	50	–	–	Vdc
Collector–Emitter Breakdown Voltage (Note 4) ( $I_C = 2.0\text{ mA}$ , $I_B = 0$ )	$V_{(BR)CEO}$	50	–	–	Vdc
<b>ON CHARACTERISTICS (Note 4)</b>					
DC Current Gain ( $V_{CE} = 10\text{ V}$ , $I_C = 5.0\text{ mA}$ )	$h_{FE}$	35	60	–	
NSBA114EDP6T5G		60	100	–	
NSBA124EDP6T5G		80	140	–	
NSBA144EDP6T5G		80	140	–	
NSBA114YDP6T5G		80	140	–	
NSBA115TDP6T5G/NSBA123TDP6T5G		160	350	–	
NSBA143EDP6T5G		15	27	–	
NSBA143ZDP6T5G		80	140	–	
NSBA123JDP6T5G		80	140	–	
NSBA144WDP6T5G		80	140	–	
NSBA114TDP6T5G		160	250	–	
Collector–Emitter Saturation Voltage ( $I_C = 10\text{ mA}$ , $I_E = 0.3\text{ mA}$ ) NSBA114EDP6T5G/NSBA124EDP6T5G/NSBA144EDP6T5G NSBA114YDP6T5G/NSBA123TDP6T5G NSBA123JDP6T5G/NSBA144EDP6T5G ( $I_C = 10\text{ mA}$ , $I_B = 1\text{ mA}$ ) NSBA143ZDP6T5G/NSBA143EDP6T5G/NSBA114TDP6T5G ( $I_C = 10\text{ mA}$ , $I_B = 5\text{ mA}$ ) NSBA115TDP6T5G	$V_{CE(sat)}$	–	–	0.25	Vdc
Output Voltage (on) ( $V_{CC} = 5.0\text{ V}$ , $V_B = 2.5\text{ V}$ , $R_L = 1.0\text{ k}\Omega$ )	$V_{OL}$	–	–	0.2	Vdc
NSBA114TDP6T5G		–	–	0.2	
NSBA114EDP6T5G		–	–	0.2	
NSBA124EDP6T5G		–	–	0.2	
NSBA114YDP6T5G		–	–	0.2	
NSBA123TDP6T5G		–	–	0.2	
NSBA143EDP6T5G		–	–	0.2	
NSBA143ZDP6T5G		–	–	0.2	
NSBA123JDP6T5G		–	–	0.2	
( $V_{CC} = 5.0\text{ V}$ , $V_B = 3.5\text{ V}$ , $R_L = 1.0\text{ k}\Omega$ )		–	–	0.2	
( $V_{CC} = 5.0\text{ V}$ , $V_B = 4.0\text{ V}$ , $R_L = 1.0\text{ k}\Omega$ )		–	–	0.2	
( $V_{CC} = 5.0\text{ V}$ , $V_B = 5.0\text{ V}$ , $R_L = 1.0\text{ k}\Omega$ )		–	–	0.2	
Output Voltage (off) ( $V_{CC} = 5.0\text{ V}$ , $V_B = 0.5\text{ V}$ , $R_L = 1.0\text{ k}\Omega$ ) NSBA114EDP6T5G/NSBA124EDP6T5G/NSBA144EDP6T5G NSBA114YDP6T5G/NSBA143ZDP6T5G/NSBA123JDP6T5G NSBA144WDP6T5G ( $V_{CC} = 5.0\text{ V}$ , $V_B = 0.25\text{ V}$ , $R_L = 1.0\text{ k}\Omega$ ) NSBA123TDP6T5G/NSBA143EDP6T5G/ NSBA114TDP6T5G/NSBA115TDP6T5G	$V_{OH}$	4.9	–	–	Vdc

4. Pulse Test: Pulse Width < 300  $\mu\text{s}$ , Duty Cycle < 2.0%

## NSBA114EDP6T5G Series

### ELECTRICAL CHARACTERISTICS (T<sub>A</sub> = 25°C unless otherwise noted) (Continued)

Characteristic		Symbol	Min	Typ	Max	Unit
Input Resistor	NSBA114TDP6T5G	R1	7.0	10	13	kΩ
	NSBA114EDP6T5G		7.0	10	13	
	NSBA124EDP6T5G		15.4	22	28.6	
	NSBA144EDP6T5G		32.9	47	61.1	
	NSBA114YDP6T5G		7.0	10	13	
	NSBA123TDP6T5G		1.5	2.2	2.9	
	NSBA143EDP6T5G		3.3	4.7	6.1	
	NSBA143ZDP6T5G		3.3	4.7	6.1	
	NSBA123JDP6T5G		1.54	2.2	2.86	
	NSBA144WDP6T5G		32.9	47	61.1	
	NSBA115TDP6T5G		70	100	130	
Resistor Ratio	NSBA114EDP6T5G/NSBA124EDP6T5G	R <sub>1</sub> /R <sub>2</sub>	0.8	1.0	1.2	
	NSBA144EDP6T5G/NSBA143EDP6T5G		0.17	0.21	0.25	
	NSBA114YDP6T5G		-	-	-	
	NSBA123TDP6T5G/NSBA114TDP6T5G/					
	NSBA115TDP6T5G					
	NSBA143ZDP6T5G		0.055	0.1	0.185	
	NSBA123JDP6T5G		0.038	0.047	0.056	
	NSBA144WDP6T5G		1.7	2.1	2.6	

# NSBA114EDP6T5G Series

## TYPICAL ELECTRICAL CHARACTERISTICS – NSBA114EDP6T5G

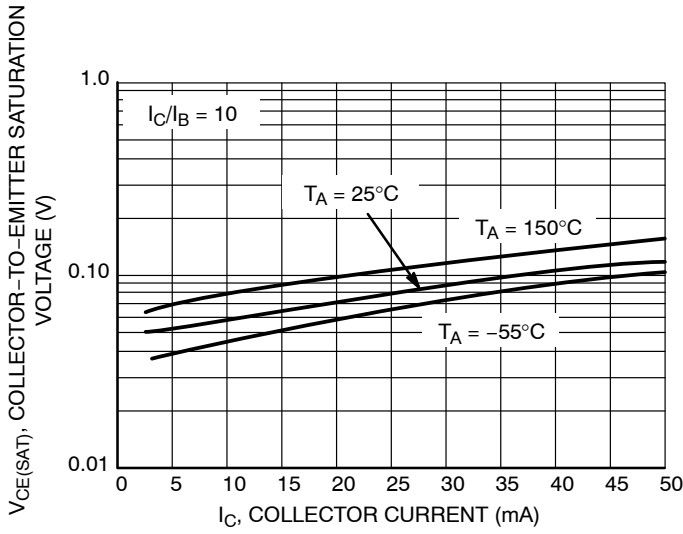


Figure 1.  $V_{CE(sat)}$  vs.  $I_C$

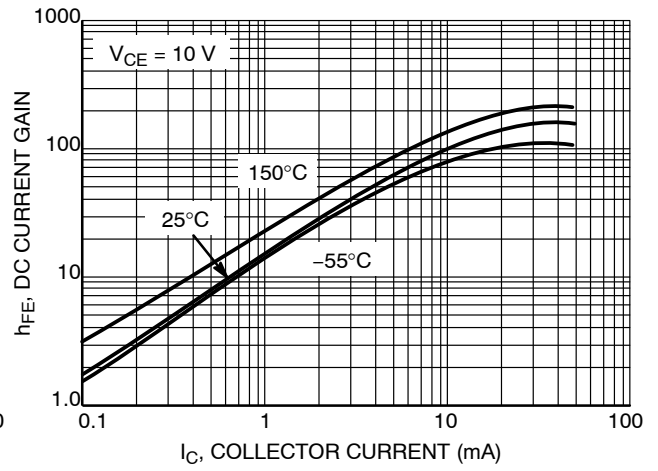


Figure 2. DC Current Gain

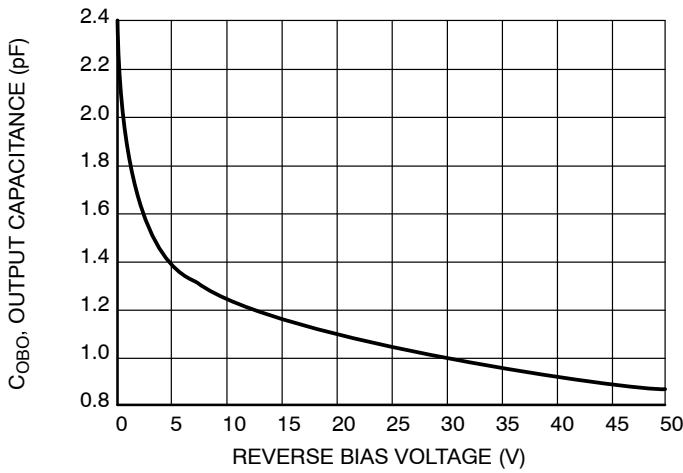


Figure 3. Output Capacitance

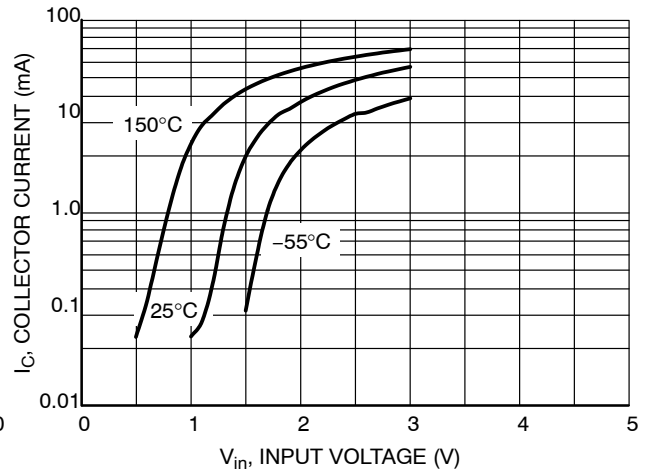


Figure 4. Output Current vs. Input Voltage

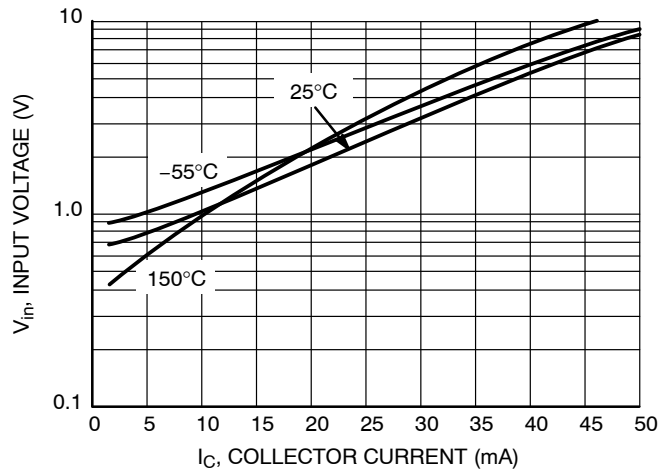
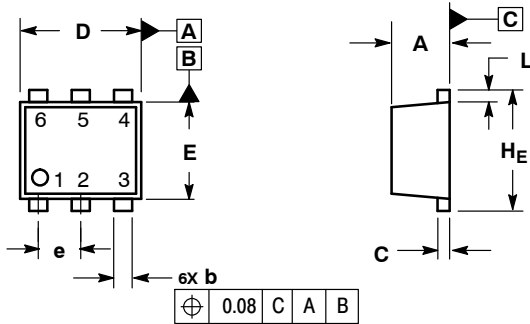


Figure 5. Input Voltage vs. Output Current

# NSBA114EDP6T5G Series

## PACKAGE DIMENSIONS

SOT-963  
CASE 527AD-01  
ISSUE D

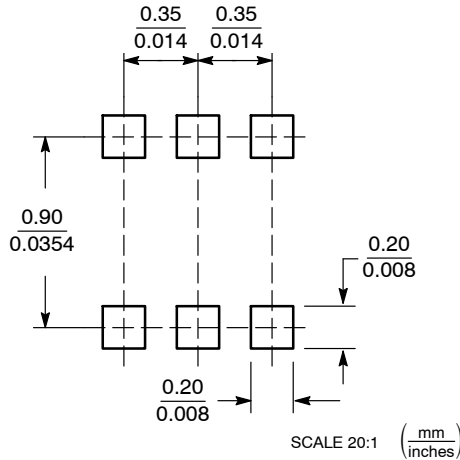


NOTES:

1. DIMENSIONING AND TOLERANCING PER ANSI Y14.5M, 1982.
2. CONTROLLING DIMENSION: MILLIMETERS
3. MAXIMUM LEAD THICKNESS INCLUDES LEAD FINISH THICKNESS. MINIMUM LEAD THICKNESS IS THE MINIMUM THICKNESS OF BASE MATERIAL.

DIM	MILLIMETERS			INCHES		
	MIN	NOM	MAX	MIN	NOM	MAX
A	0.34	0.37	0.40			
b	0.10	0.15	0.20	0.004	0.006	0.008
C	0.07	0.12	0.17	0.003	0.005	0.007
D	0.95	1.00	1.05	0.037	0.039	0.041
E	0.75	0.80	0.85	0.03	0.032	0.034
e	0.35 BSC			0.014 BSC		
L	0.05	0.10	0.15	0.002	0.004	0.006
HE	0.95	1.00	1.05	0.037	0.039	0.041

### SOLDERING FOOTPRINT\*



\*For additional information on our Pb-Free strategy and soldering details, please download the ON Semiconductor Soldering and Mounting Techniques Reference Manual, SOLDERRM/D.

ON Semiconductor and are registered trademarks of Semiconductor Components Industries, LLC (SCILLC). SCILLC reserves the right to make changes without further notice to any products herein. SCILLC makes no warranty, representation or guarantee regarding the suitability of its products for any particular purpose, nor does SCILLC assume any liability arising out of the application or use of any product or circuit, and specifically disclaims any and all liability, including without limitation special, consequential or incidental damages. "Typical" parameters which may be provided in SCILLC data sheets and/or specifications can and do vary in different applications and actual performance may vary over time. All operating parameters, including "Typicals" must be validated for each customer application by customer's technical experts. SCILLC does not convey any license under its patent rights nor the rights of others. SCILLC products are not designed, intended, or authorized for use as components in systems intended for surgical implant into the body, or other applications intended to support or sustain life, or for any other application in which the failure of the SCILLC product could create a situation where personal injury or death may occur. Should Buyer purchase or use SCILLC products for any such unintended or unauthorized application, Buyer shall indemnify and hold SCILLC and its officers, employees, subsidiaries, affiliates, and distributors harmless against all claims, costs, damages, and expenses, and reasonable attorney fees arising out of, directly or indirectly, any claim of personal injury or death associated with such unintended or unauthorized use, even if such claim alleges that SCILLC was negligent regarding the design or manufacture of the part. SCILLC is an Equal Opportunity/Affirmative Action Employer. This literature is subject to all applicable copyright laws and is not for resale in any manner.

### PUBLICATION ORDERING INFORMATION

**LITERATURE FULFILLMENT:**  
Literature Distribution Center for ON Semiconductor  
P.O. Box 5163, Denver, Colorado 80217 USA  
**Phone:** 303-675-2175 or 800-344-3860 Toll Free USA/Canada  
**Fax:** 303-675-2176 or 800-344-3867 Toll Free USA/Canada  
**Email:** orderlit@onsemi.com

**N. American Technical Support:** 800-282-9855 Toll Free USA/Canada  
**Europe, Middle East and Africa Technical Support:**  
Phone: 421 33 790 2910  
**Japan Customer Focus Center**  
Phone: 81-3-5773-3850

**ON Semiconductor Website:** [www.onsemi.com](http://www.onsemi.com)

**Order Literature:** <http://www.onsemi.com/orderlit>

For additional information, please contact your local Sales Representative

# Mouser Electronics

Authorized Distributor

Click to View Pricing, Inventory, Delivery & Lifecycle Information:

## ON Semiconductor:

[NSBA114EDP6T5G](#) [NSBA144EDP6T5G](#) [NSBA114TDP6T5G](#) [NSBA115TDP6T5G](#) [NSBA123JDP6T5G](#)  
[NSBA123TDP6T5G](#) [NSBA114YDP6T5G](#) [NSBA124EDP6T5G](#) [NSBA143EDP6T5G](#) [NSBA143ZDP6T5G](#)  
[NSBA144WDP6T5G](#)