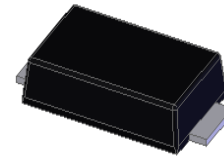


Features

- Schottky barrier diodes
- Low forward voltage drop
- Low leakage current
- Moisture sensitivity: level 1, per J-STD-020
- Solder dip 260 °C, 10 s
- Low profile



GOODARK: eSGB

TYPICAL APPLICATIONS

For use of fast switching in RF module, lighting, cellular phone, portable device, power supplies, and other consumer applications.

MAXIMUM RATINGS (TA = 25 °C unless otherwise noted)											
PARAMETER	SYMBOL	LS12	LS14	LS16	LS18	LS19	LS1B	LS1BH	LS1B5H	LS1CH	UNIT
Maximum repetitive peak reverse voltage	VRRM	20	40	60	80	90	100	100	150	200	V
Maximum RMS voltage	VRMS	14	28	42	56	63	70	70	105	140	V
Maximum DC blocking voltage	VDC	20	40	60	80	90	100	100	150	200	V
Maximum average forward rectified current	IF(AV)	1.0									A
Peak forward surge current 8.3 ms single half sine-wave superimposed on rated load	IFSM	30									A
Operating junction and storage temperature range	TJ, TSTG	- 55 to + 150						- 55 to + 175			°C

ELECTRICAL CHARACTERISTICS (TA = 25 °C unless otherwise noted)												
PARAMETER	TEST CONDITIONS	SYMBOL	LS12	LS14	LS16	LS18	LS19	LS1B	LS1BH	LS1B5H	LS1CH	UNIT
Maximum instantaneous forward voltage	IF=1A, Tj=25	VF	0.45	0.53	0.65	0.82			0.85	0.85	Volts	
Maximum DC reverse current at rated DC blocking voltage	TA=25	IR	0.3									mA
	TA=100		10									
Typical junction capacitance	4.0 V, 1 MHz	CJ	50						pF			
Typical thermal resistance	junction to lead	RθJL ¹⁾	19						°C/W			

Note1: Thermal resistance from junction to lead, mounted on PCB with 0.315 × 0.315 " (8.0 × 8.0mm) copper pads

RATINGS AND CHARACTERISTICS CURVES

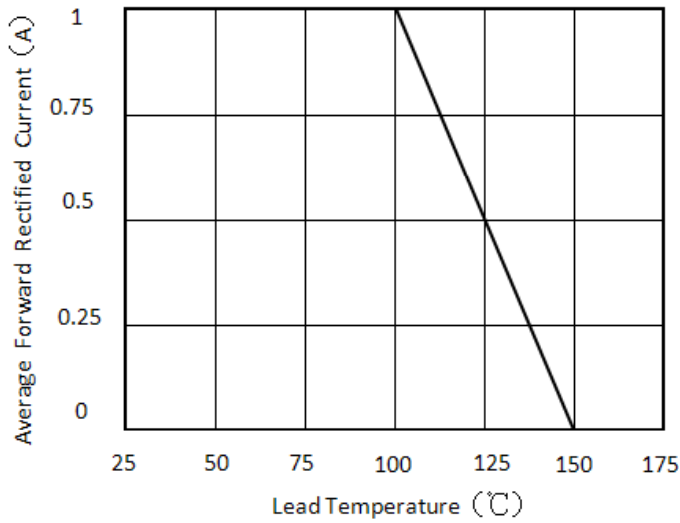


Figure 1. Forward Current Derating Curve

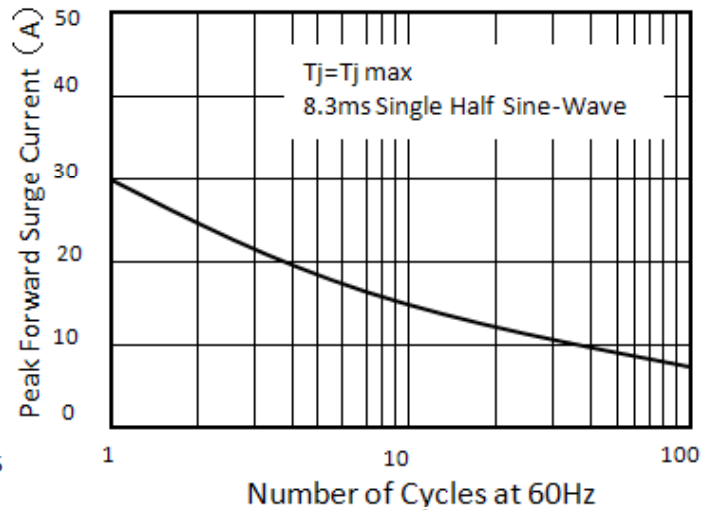


Figure 2. Maximum Non-Repetitive Peak Forward Surge Current

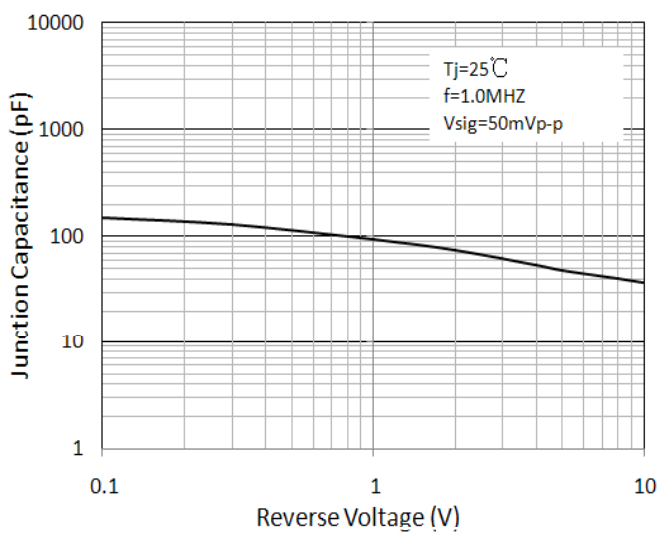


Figure 3. Typical Junction Capacitance

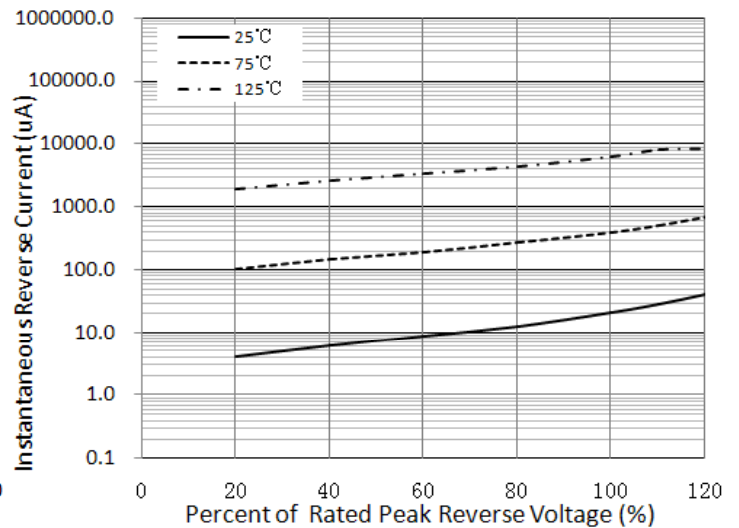


Figure 4. Typical Reverse Characteristics

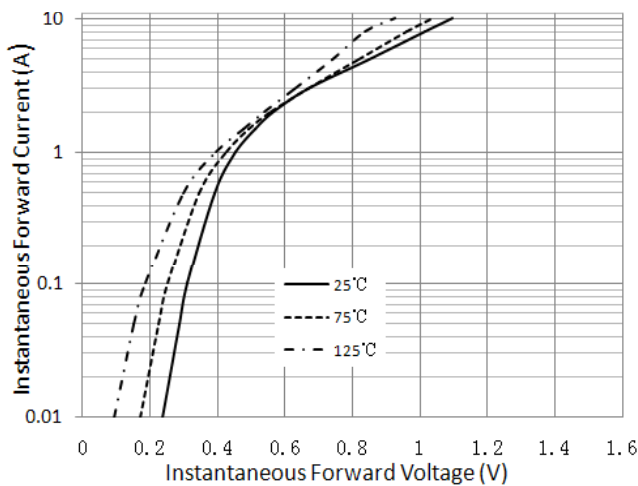
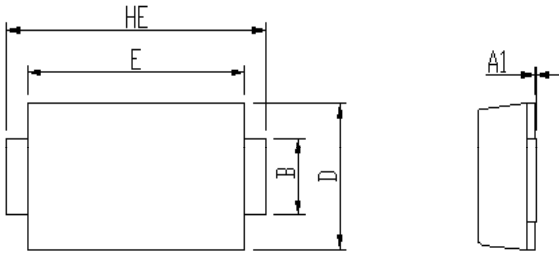
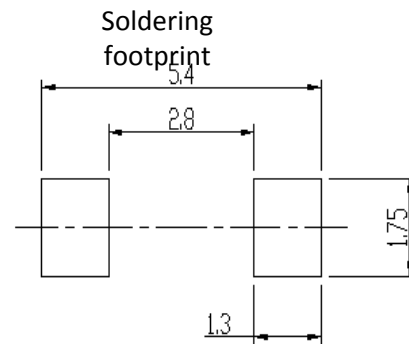
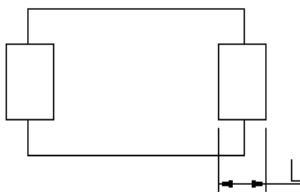
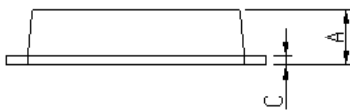


Figure 5. Typical Instantaneous Forward Characteristics

PACKAGE OUTLINE DIMENSIONS (in millimeters)



DIM	Unit: mm		Unit: inch	
	MIN	MAX	MIN	MAX
A	0.92	1.08	0.036	0.043
A1	0	0.1	0.000	0.004
B	1.25	1.45	0.049	0.057
C	0.1	0.25	0.004	0.010
D	2.6	2.8	0.102	0.110
E	4.1	4.3	0.161	0.169
L	0.7	1.1	0.028	0.043
HE	4.8	5.2	0.189	0.205



PACKING INFORMATION

Packing quantities:

3000 pcs/Reel , 12mm Tape, 13" Reel

Tape & Reel Specification

