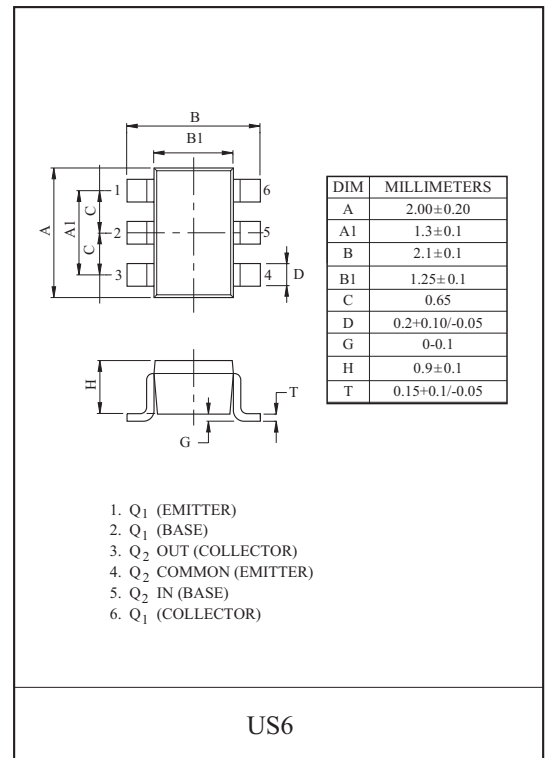
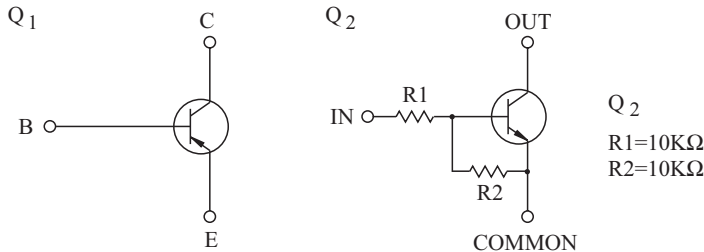


SWITCHING APPLICATION.
INTERFACE CIRCUIT AND DRIVER CIRCUIT APPLICATION.

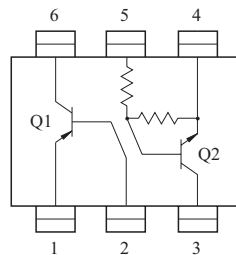
FEATURES

- Including two devices in US6.
(Ultra Super mini type with 6 leads.)
- With Built-in bias resistors.
- Simplify circuit design.
- Reduce a quantity of parts and manufacturing process.

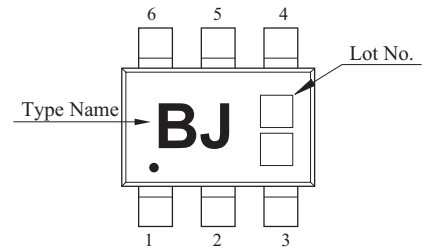
EQUIVALENT CIRCUIT



EQUIVALENT CIRCUIT (TOP VIEW)



Marking



Q1 MAXIMUM RATING (Ta=25 °C)

CHARACTERISTIC	SYMBOL	RATING	UNIT
Collector-Base Voltage	V _{CBO}	-15	V
Collector-Emitter Voltage	V _{CEO}	-12	V
Emitter-Base Voltage	V _{EBO}	-6	V
Collector Current	I _C	-500	mA
	I _{CP} *	-1	A

* Single pulse Pw=1mS.

Q2 MAXIMUM RATING (Ta=25 °C)

CHARACTERISTIC	SYMBOL	RATING	UNIT
Output Voltage	V _O	50	V
Input Voltage	V _I	30, -10	V
Output Current	I _O	100	mA

Q1, Q2 MAXIMUM RATING (Ta=25 °C)

CHARACTERISTIC	SYMBOL	RATING	UNIT
Power Dissipation	P _D *	200	mW
Junction Temperature	T _j	150	°C
Storage Temperature Range	T _{stg}	-55 ~ 150	°C

* Total Raing.

KTX215U

Q1 ELECTRICAL CHARACTERISTICS (Ta=25 °C)

CHARACTERISTIC	SYMBOL	TEST CONDITION	MIN.	TYP.	MAX.	UNIT
Collector Cut-off Current	I_{CBO}	$V_{CB}=-15V, I_E=0$	-	-	-100	nA
Collector-Base Breakdown Voltage	$V_{(BR)CBO}$	$I_E=-10\mu A$	-15	-	-	V
Collector-Emitter Breakdown Voltage	$V_{(BR)CEO}$	$I_C=-1mA$	-12	-	-	V
Emitter-Base Breakdown Voltage	$V_{(BR)EBO}$	$I_E=-10\mu A$	-6	-	-	V
DC Current Gain	h_{FE}	$V_{CE}=-2V, I_C=-10mA$	270	-	680	-
Collector-Emitter Saturation Voltage	$V_{CE(sat)}$	$I_C=-200mA, I_B=-10mA$	-	-100	-250	mV
Transition Frequency	f_T	$V_{CE}=-2V, I_C=-10mA, f_T=100MHz$	-	260	-	MHz
Collector Output Capacitance	C_{ob}	$V_{CB}=-10V, I_E=0, f=1MHz$	-	6.5	-	pF

Q2 ELECTRICAL CHARACTERISTICS (Ta=25 °C)

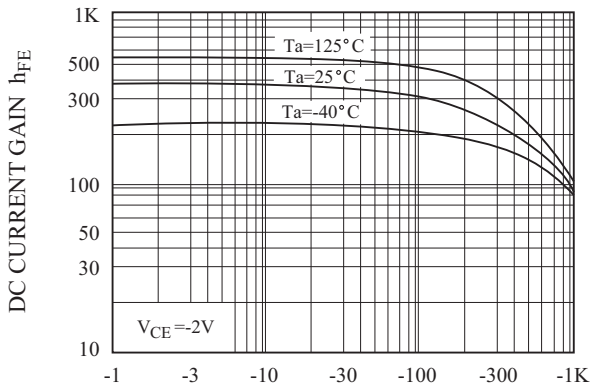
CHARACTERISTIC	SYMBOL	TEST CONDITION	MIN.	TYP.	MAX.	UNIT.
Output Cut-off Current	$I_{O(OFF)}$	$V_O=50V, V_I=0$	-	-	500	nA
DC Current Gain	G_I	$V_O=5V, I_O=10mA$	50	80	-	
Output Voltage	$V_{O(ON)}$	$I_O=10mA, I_I=0.5mA$	-	0.1	0.3	V
Input Voltage (ON)	$V_{I(ON)}$	$V_O=0.2V, I_O=5mA$	-	1.8	2.4	V
Input Voltage (OFF)	$V_{I(OFF)}$	$V_O=5V, I_O=0.1mA$	1.0	1.2	-	V
Transition Frequency	f_T^*	$V_O=10V, I_O=5mA$	-	200	-	MHz
Input Current	I_I	$V_I=5V$	-	-	0.88	mA

Note : * Characteristic of Transistor Only.

KTX215U

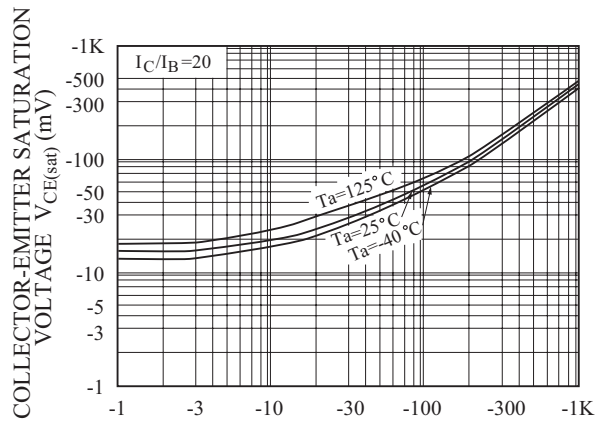
Q₁ (PNP TRANSISTOR)

$h_{FE} - I_C$



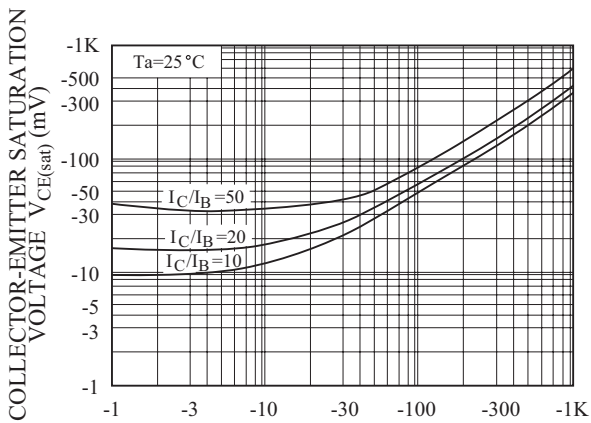
COLLECTOR CURRENT I_C (mA)

$V_{CE(sat)} - I_C$



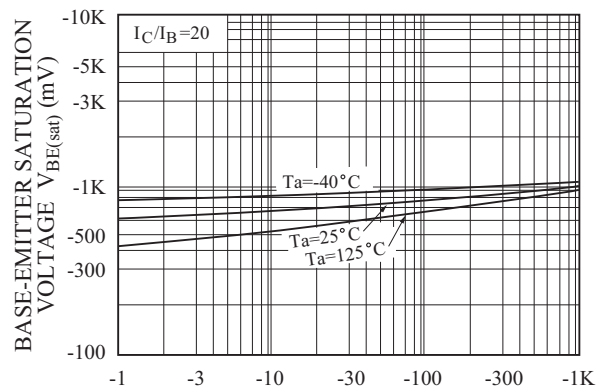
COLLECTOR CURRENT I_C (mA)

$V_{CE(sat)} - I_C$



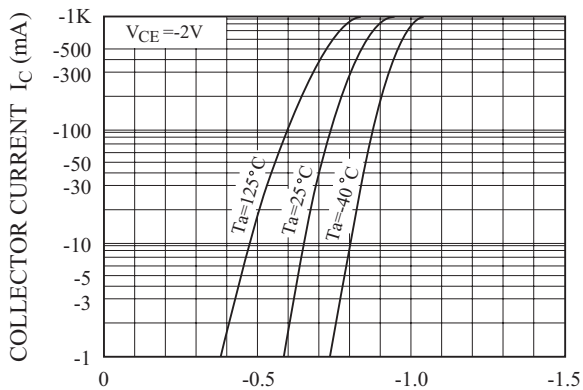
COLLECTOR CURRENT I_C (mA)

$V_{BE(sat)} - I_C$



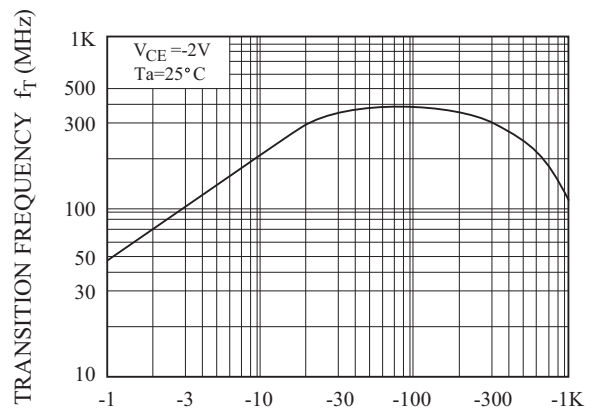
COLLECTOR CURRENT I_C (mA)

$I_C - V_{BE}$



BASE-EMITTER VOLTAGE V_{BE} (V)

$f_T - I_C$

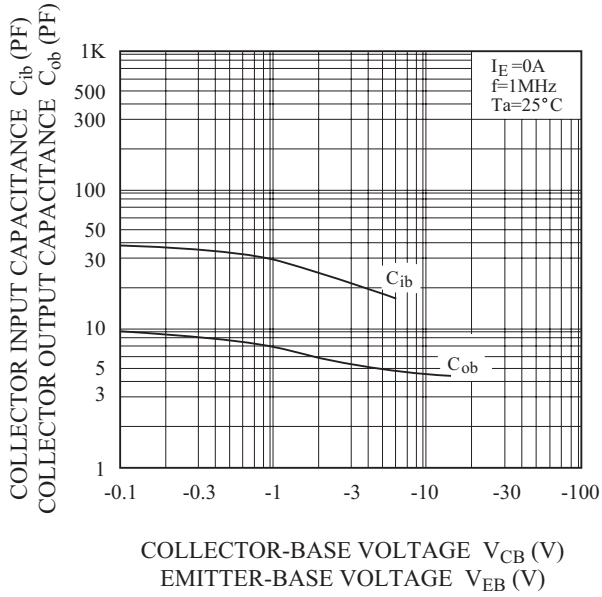


COLLECTOR CURRENT I_C (mA)

KTX215U

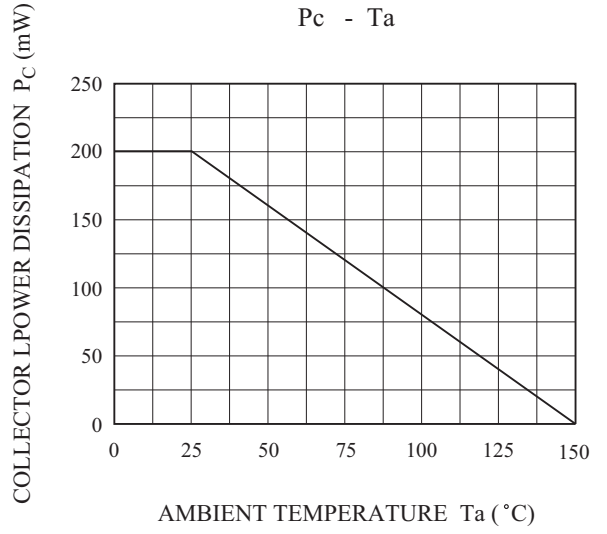
Q₁ (PNP TRANSISTOR)

$$C_{ob} - V_{CB}, C_{ib} - V_{EB}$$



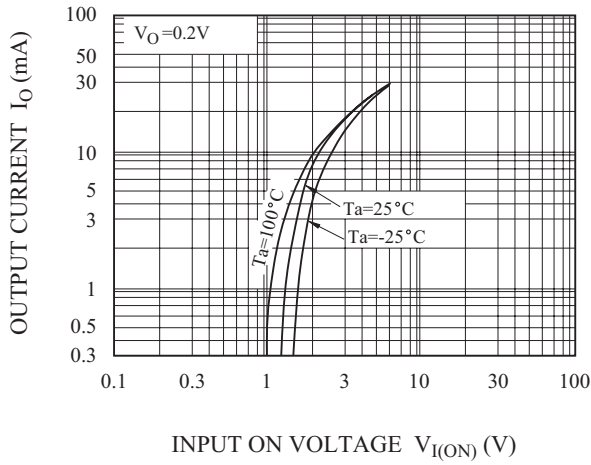
TOTAL POWER DISSIPATION

$$P_c - T_a$$

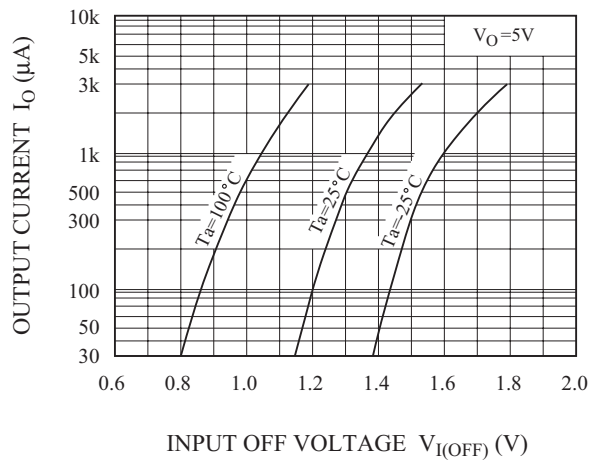


Q₂ (NPN TRANSISTOR With Built-in Bias Resistors)

$$I_O - V_{I(ON)}$$



$$I_O - V_{I(OFF)}$$



$$G_I - I_O$$

