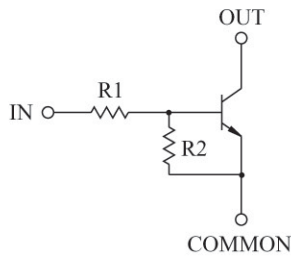


SWITCHING APPLICATION.
INTERFACE CIRCUIT AND DRIVER CIRCUIT APPLICATION.

FEATURES

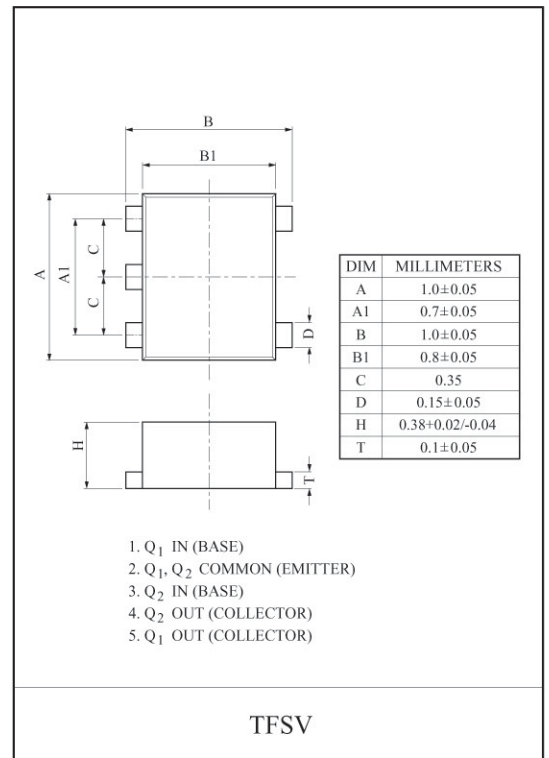
- With Built-in Bias Resistors.
- Simplify Circuit Design.
- Reduce a Quantity of Parts and Manufacturing Process.
- Thin Fine Pitch Super mini 5pin Package.

EQUIVALENT CIRCUIT

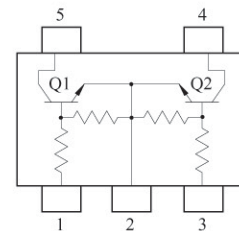


BIAS RESISTOR VALUES

TYPE NO.	R1(kΩ)	R2(kΩ)
KRC657F	10	47
KRC658F	22	47
KRC659F	47	22



EQUIVALENT CIRCUIT (TOP VIEW)



MAXIMUM RATING (Ta=25°C)

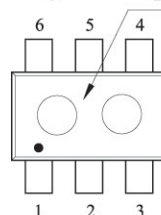
CHARACTERISTIC		SYMBOL	RATING	UNIT
Output Voltage	KRC657F~659F	V_O	20	V
Input Voltage	KRC657F	V_I	10/-6	V
	KRC658F		10/-7	
	KRC659F		10/-15	
Output Current	KRC657F~659F	I_O	50	mA
Power Dissipation		P_D^*	50	mW
Junction Temperature		T_j	150	°C
Storage Temperature Range		T_{stg}	55 ~ 150	°C

* Total Rating.

MARK SPEC

TYPE	KRC657F	KRC658F	KRC659F
MARK	JG	JH	JJ

Marking

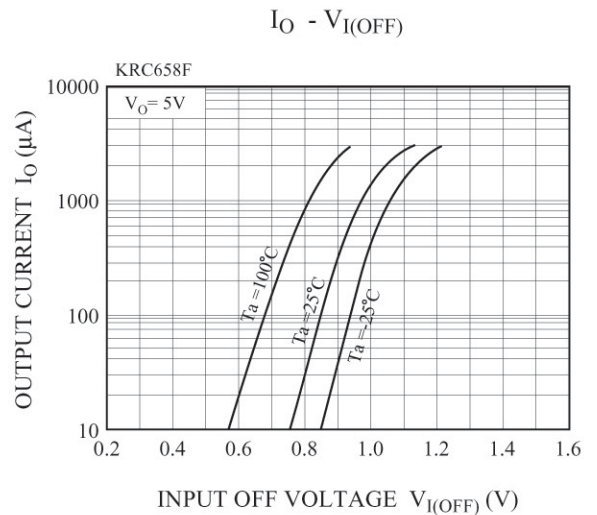
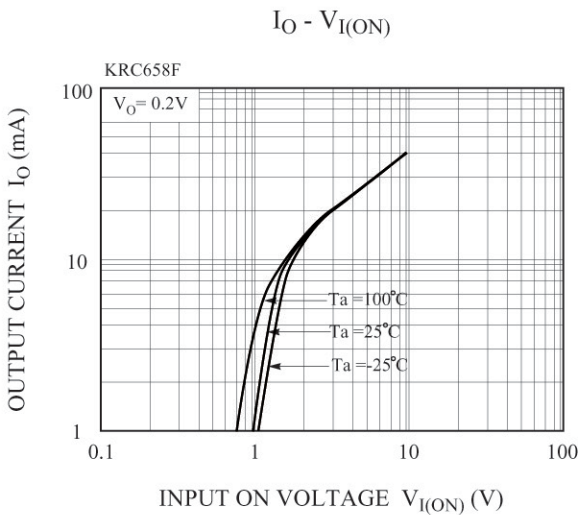
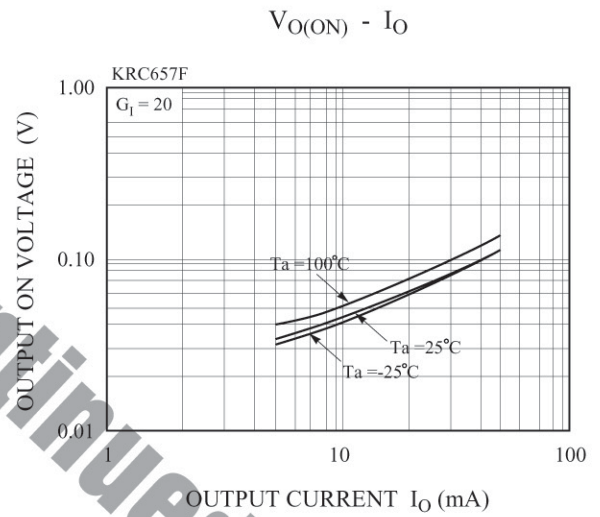
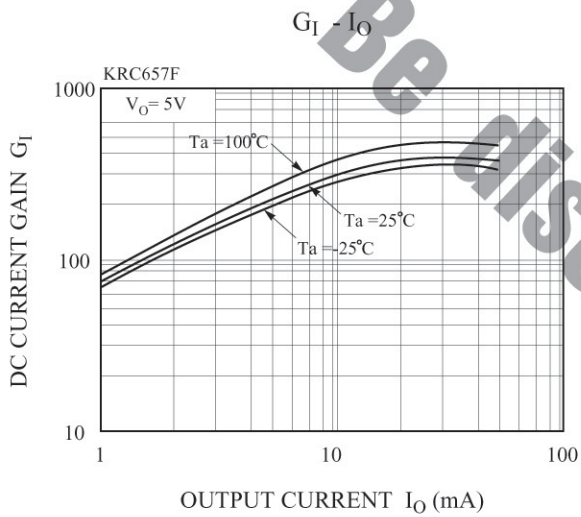
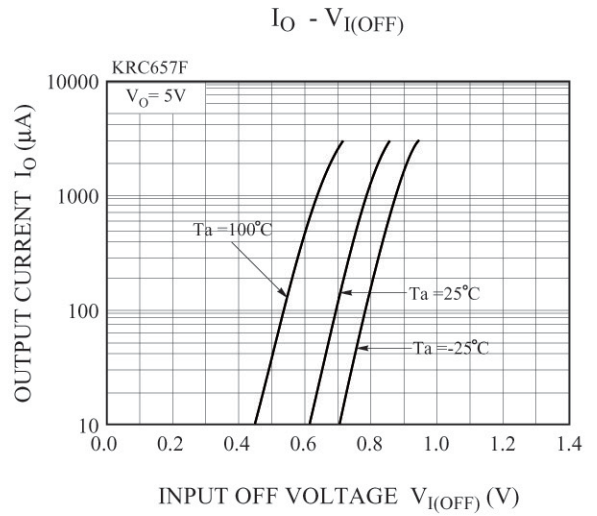
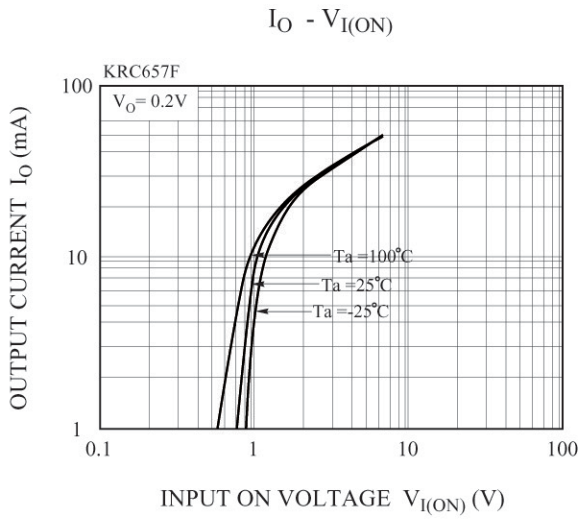


KRC657F~KRC659F

ELECTRICAL CHARACTERISTICS (Ta=25°C)

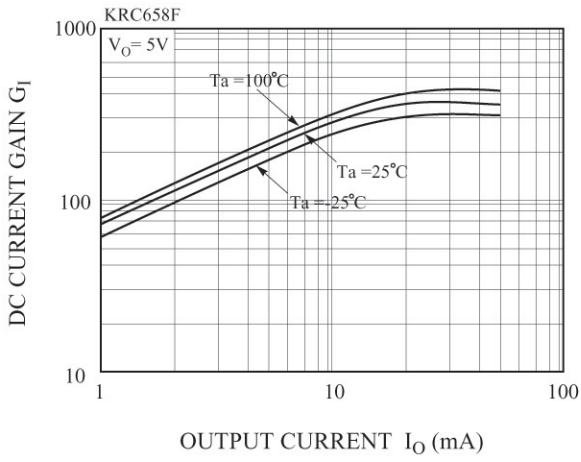
CHARACTERISTIC		SYMBOL	TEST CONDITION	MIN.	TYP.	MAX.	UNIT
Output Cut-off Current	KRC657F~659F	$I_{O(OFF)}$	$V_O=20V, V_I=0$	-	-	500	nA
DC Current Gain	KRC657F	G_I	$V_O=5V, I_O=10mA$	120	-	-	
	KRC658F			120	-	-	
	KRC659F			100	-	-	
Output Voltage	KRC657F~659F	$V_{O(ON)}$	$I_O=5mA, I_I=0.25mA$	-	-	0.15	V
Input Voltage (ON)	KRC657F	$V_{I(ON)}$	$V_O=0.2V, I_O=5mA$	-	-	1.5	V
	KRC658F			-	-	2.2	
	KRC659F			-	-	5.0	
Input Voltage (OFF)	KRC657F	$V_{I(OFF)}$	$V_O=5V, I_O=0.1mA$	0.5	-	-	V
	KRC658F			0.6	-	-	
	KRC659F			1.3	-	-	
Input Current	KRC657F	I_I	$V_I=5V$	-	-	0.88	mA
	KRC658F			-	-	0.36	
	KRC659F			-	-	0.16	
Input Resistor	KRC657F	R1	-	7	10	13	kΩ
	KRC658F			15.4	22	28.6	
	KRC659F			32.9	47	61.1	
Resistor Ratio	KRC657F	R2/R1	-	3.7	4.7	5.7	
	KRC658F			1.7	2.1	2.6	
	KRC659F			0.37	0.47	0.57	

KRC657F~KRC659F

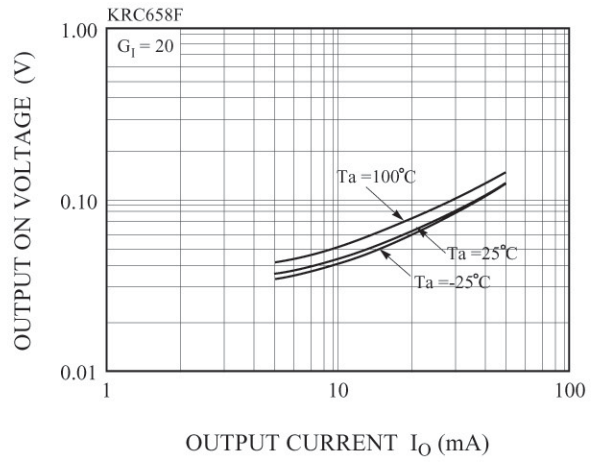


KRC657F~KRC659F

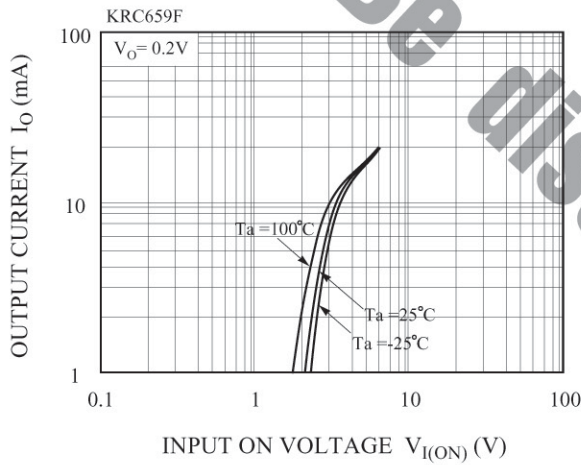
$G_I - I_O$



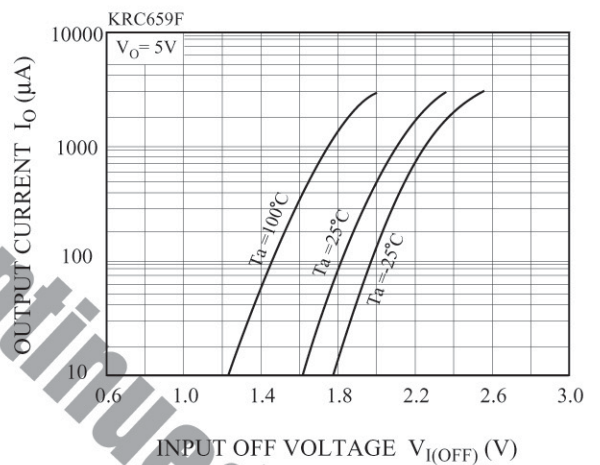
$V_{O(ON)} - I_O$



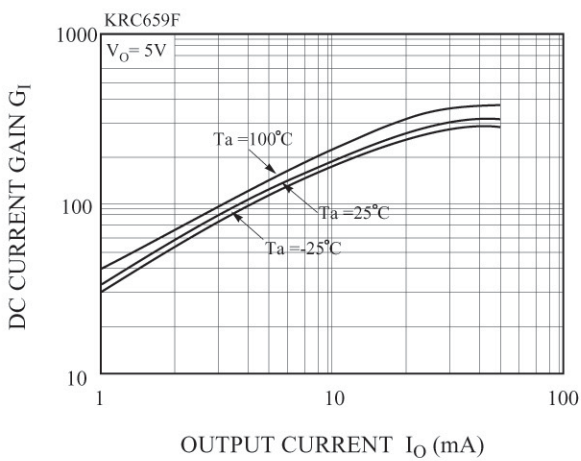
$I_O - V_{I(ON)}$



$I_O - V_{I(OFF)}$



$G_I - I_O$



$V_{O(ON)} - I_O$

