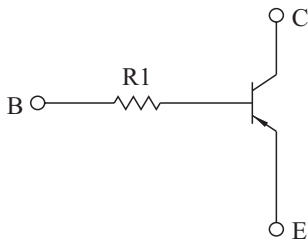


SWITCHING APPLICATION.  
INTERFACE CIRCUIT AND DRIVER CIRCUIT APPLICATION.

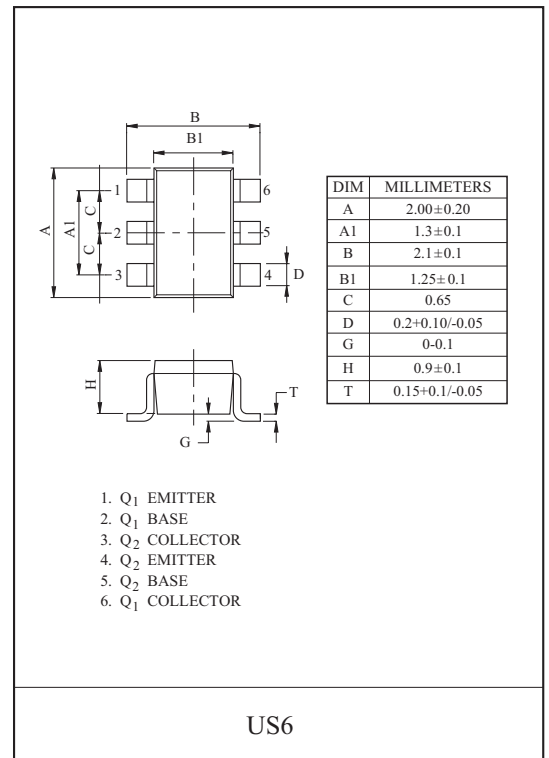
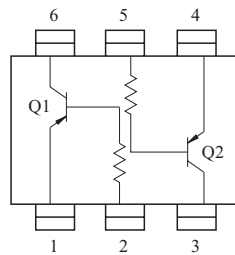
### FEATURES

- With Built-in Bias Resistors.
- Simplify Circuit Design.
- Reduce a Quantity of Parts and Manufacturing Process.
- High Packing Density.

### EQUIVALENT CIRCUIT



### EQUIVALENT CIRCUIT (TOP VIEW)



### MAXIMUM RATING (Ta=25 °C)

CHARACTERISTIC	SYMBOL	RATING	UNIT	CHARACTERISTIC	SYMBOL	RATING	UNIT
Collector-Base Voltage	V <sub>CBO</sub>	-50	V	Collector Power Dissipation	P <sub>C</sub> *	200	mW
Collector-Emitter Voltage	V <sub>CEO</sub>	-50	V	Junction Temperature	T <sub>j</sub>	150	°C
Emitter-Base Voltage	V <sub>EBO</sub>	-5	V	Storage Temperature Range	T <sub>stg</sub>	-55 ~ 150	°C
Collector Current	I <sub>C</sub>	-100	mA	* Total Rating.			

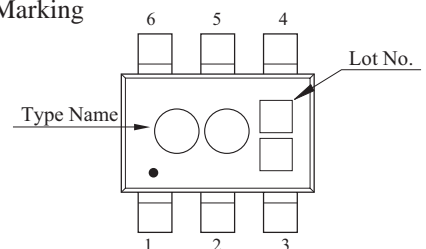
### ELECTRICAL CHARACTERISTICS (Ta=25 °C)

CHARACTERISTIC	SYMBOL	TEST CONDITION	MIN.	TYP.	MAX.	UNIT	
Collector Cut-off Current	I <sub>CBO</sub>	V <sub>CB</sub> =-50V, I <sub>E</sub> =0	-	-	-100	nA	
Emitter Cut-off Current	I <sub>EBO</sub>	V <sub>EB</sub> =-5V, I <sub>C</sub> =0	-	-	-100	nA	
DC Current Gain	h <sub>FE</sub>	V <sub>CE</sub> =-5V, I <sub>C</sub> =-1mA	120	-	-		
Collector-Emitter Saturation Voltage	V <sub>CE(sat)</sub>	I <sub>C</sub> =-10mA, I <sub>B</sub> =-0.5mA	-	-0.1	-0.3	V	
Transition Frequency	f <sub>T</sub> *	V <sub>CE</sub> =-10V, I <sub>C</sub> =-5mA	-	250	-	MHz	
Input Resistor	KRA760U	R <sub>I</sub>		-	4.7	-	k Ω
	KRA761U			-	10	-	
	KRA762U			-	100	-	
	KRA763U			-	22	-	
	KRA764U			-	47	-	

### MARK SPEC

TYPE	KRA760U	KRA761U	KRA762U	KRA763U	KRA764U
MARK	PK	PM	PN	PO	PP

### Marking

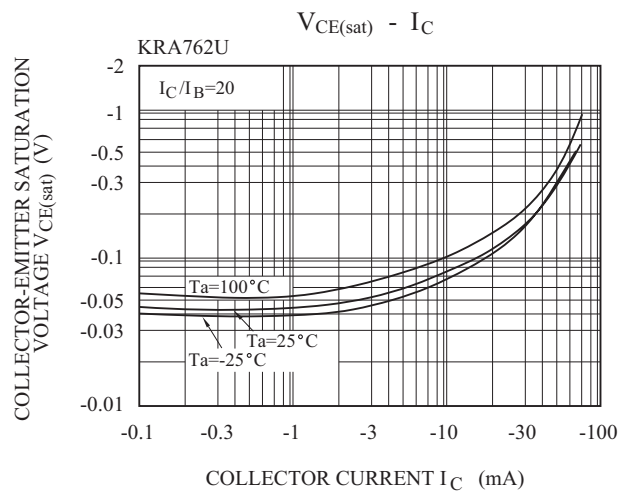
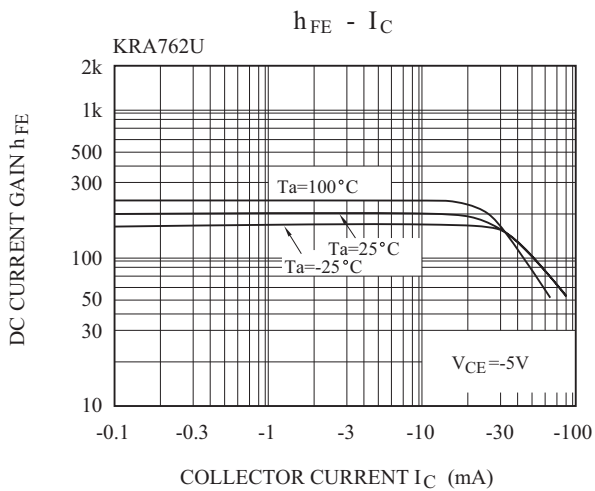
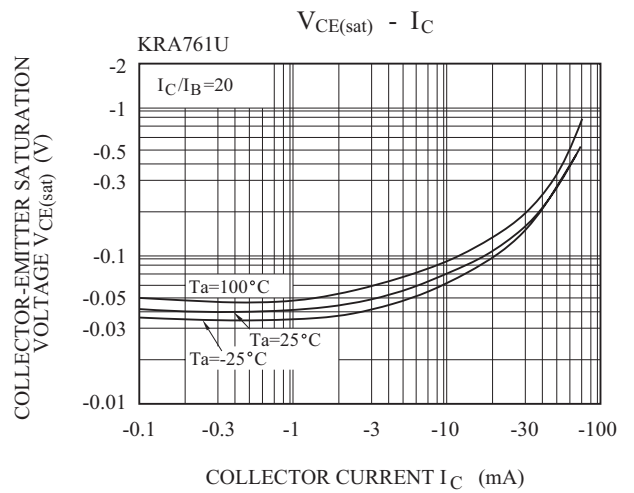
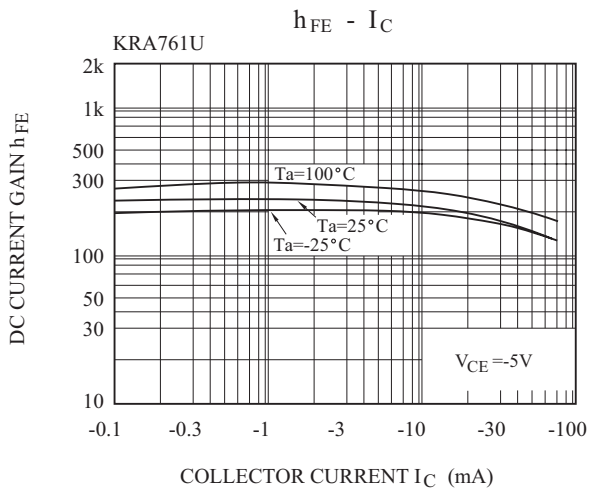
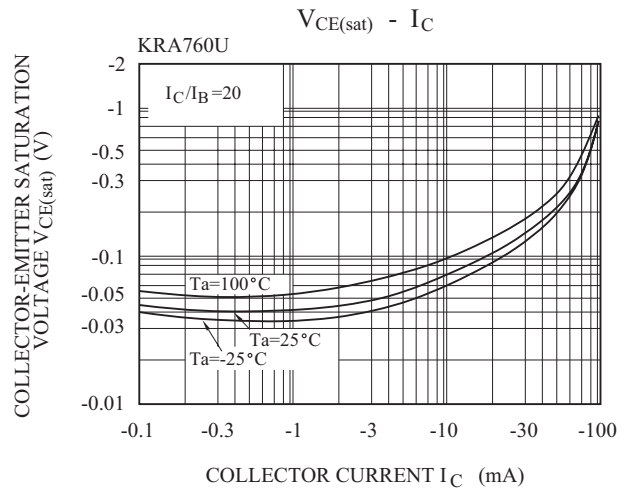
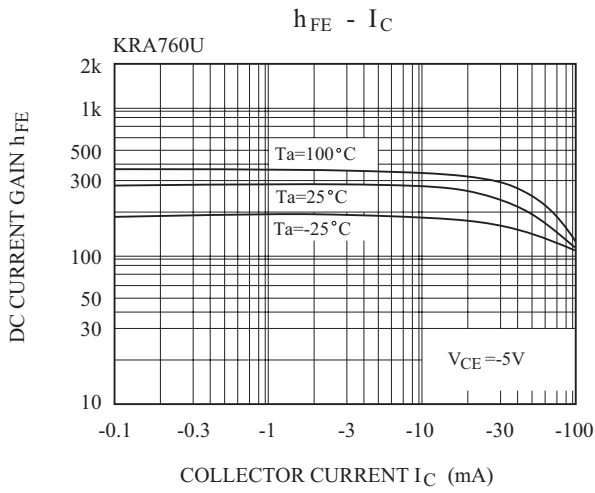


# KRA760U~KRA764U

## ELECTRICAL CHARACTERISTICS (Ta=25 °C)

CHARACTERISTIC		SYMBOL	TEST CONDITION	MIN.	TYP.	MAX.	UNIT
Switching Time	Rise Time	KRA760U	V <sub>O</sub> =-5V V <sub>IN</sub> =-5V R <sub>L</sub> =1k Ω	-	0.2	-	μS
		KRA761U		-	0.065	-	
		KRA762U		-	0.4	-	
		KRA763U		-	0.1	-	
		KRA764U		-	0.15	-	
	Storage Time	KRA760U		-	2.0	-	
		KRA761U		-	1.7	-	
		KRA762U		-	3.0	-	
		KRA763U		-	2.0	-	
		KRA764U		-	1.5	-	
	Fall Time	KRA760U		-	0.3	-	
		KRA761U		-	0.3	-	
		KRA762U		-	1.7	-	
		KRA763U		-	0.8	-	
		KRA764U		-	1.5	-	

# KRA760U~KRA764U



# KRA760U~KRA764U

