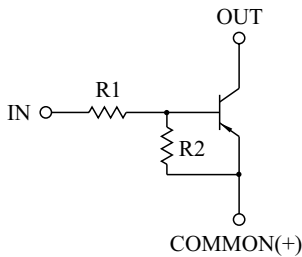


SWITCHING APPLICATION.
INTERFACE CIRCUIT AND DRIVER CIRCUIT APPLICATION.

FEATURES

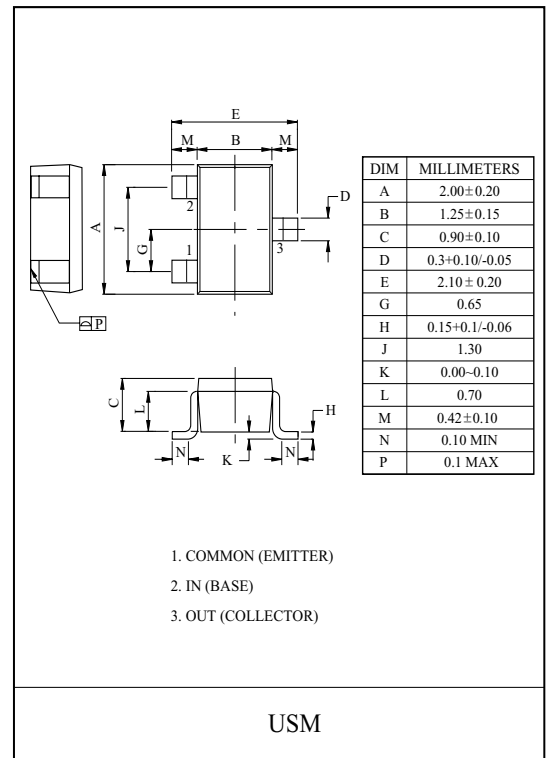
- With Built-in Bias Resistors
- Simplify Circuit Design
- Reduce a Quantity of Parts and Manufacturing Process
- High Packing Density.

EQUIVALENT CIRCUIT



BIAS RESISTOR VALUES

TYPE NO.	R1(k)	R2(k)
KRA307	10	47
KRA308	22	47



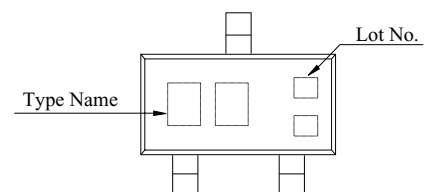
MAXIMUM RATING (Ta=25)

CHARACTERISTIC		SYMBOL	RATING	UNIT
Output Voltage	KRA307 308	V_O	-50	V
Input Voltage	KRA307	V_I	-30, 6	V
	KRA308		-40, 7	
Output Current	KRA307 308	I_O	-100	mA
Power Dissipation		P_D	100	mW
Junction Temperature		T_j	150	
Storage Temperature Range		T_{stg}	-55 150	

MARK SPEC

TYPE	KRA307	KRA308
MARK	PH	PI

Marking



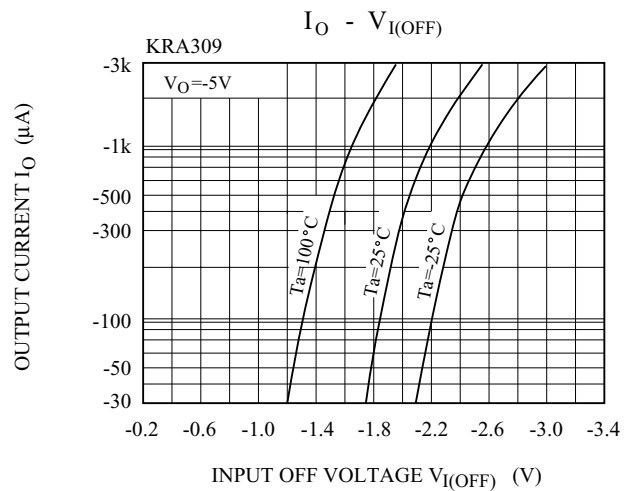
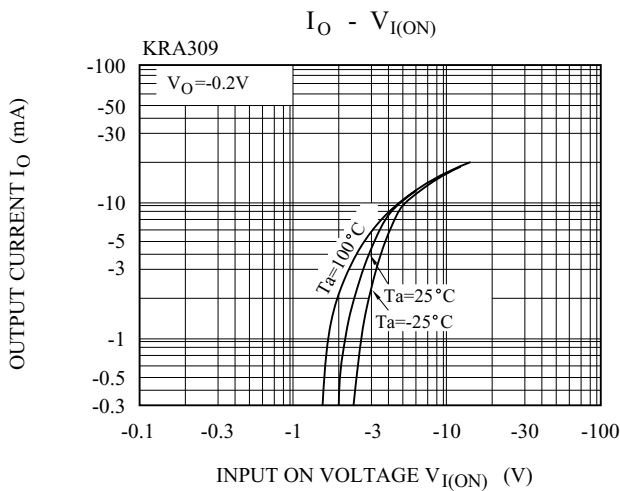
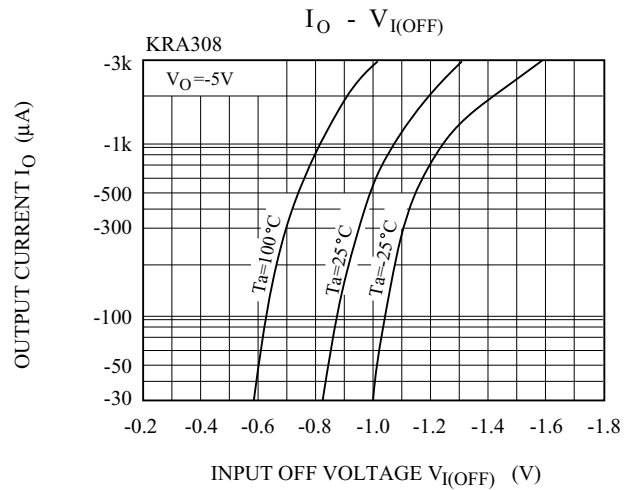
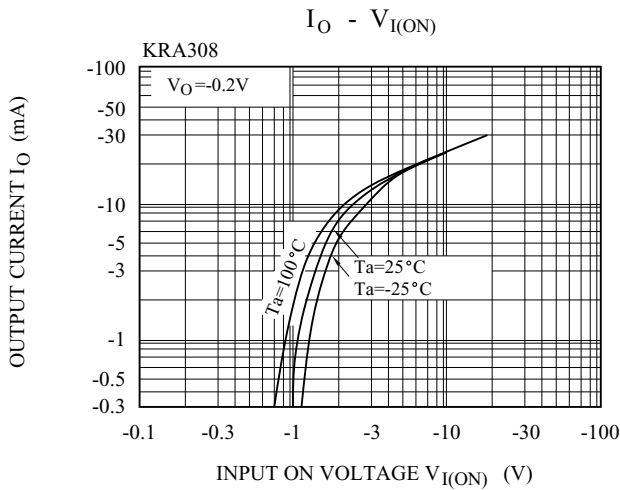
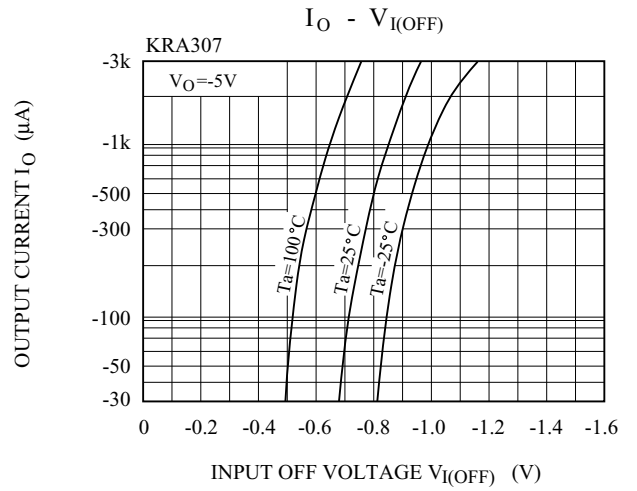
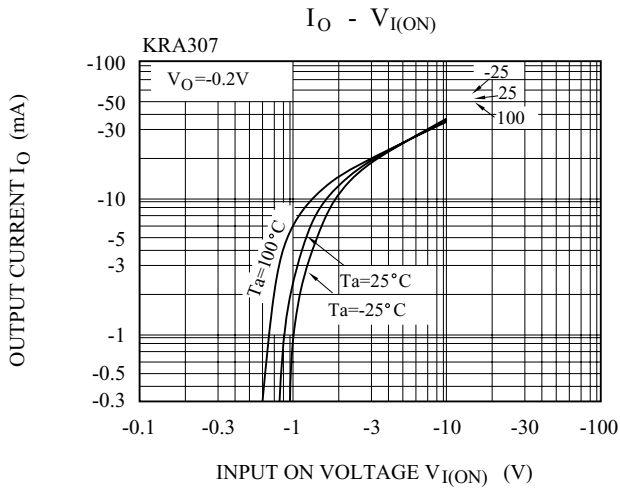
KRA307~KRA308

ELECTRICAL CHARACTERISTICS (Ta=25)

CHARACTERISTIC		SYMBOL	TEST CONDITION	MIN.	TYP.	MAX.	UNIT	
Output Cut-off Current		KRA307 308	$I_{O(OFF)}$	$V_O=-50V, V_I=0$	-	-	-500	nA
DC Current Gain		KRA307	G_I	$V_O=-5V, I_O=-10mA$	80	150	-	
		KRA308			80	150	-	
Output Voltage		KRA307 308	$V_{O(ON)}$	$I_O=-10mA, I_I=-0.5mA$	-	-0.1	-0.3	V
Input Voltage (ON)		KRA307	$V_{I(ON)}$	$V_O=-0.2V, I_O=-5mA$	-	-1.2	-1.8	V
		KRA308			-	-1.8	-2.6	
Input Voltage (OFF)		KRA307	$V_{I(OFF)}$	$V_O=-5V, I_O=-0.1mA$	-0.5	-0.75	-	V
		KRA308			-0.6	-0.88	-	
Transition Frequency		KRA307 308	f_T^*	$V_O=-10V, I_O=-5mA$	-	200	-	MHz
Input Current		KRA307	I_I	$V_I=-5V$	-	-	-0.88	mA
		KRA308			-	-	-0.36	
Switching Time	Rise Time	KRA307	t_r	$V_O=-5V, V_{IN}=-5V$ $R_L=1k$	-	0.07	-	μs
		KRA308			-	0.20	-	
	Storage Time	KRA307	t_{stg}		-	1.1	-	
		KRA308			-	1.3	-	
Fall Time	KRA307	t_f	-	0.35	-			
	KRA308		-	0.4	-			
Input Resistor		KRA307	R1	-	7	10	13	k
		KRA308			15.4	22	28.6	
Resistor Ratio		KRA307	R2/R1	-	3.7	4.7	5.7	
		KRA308			1.7	2.1	2.6	

Note : * Characteristic of Transistor Only.

KRA307~KRA308



KRA307~KRA308

