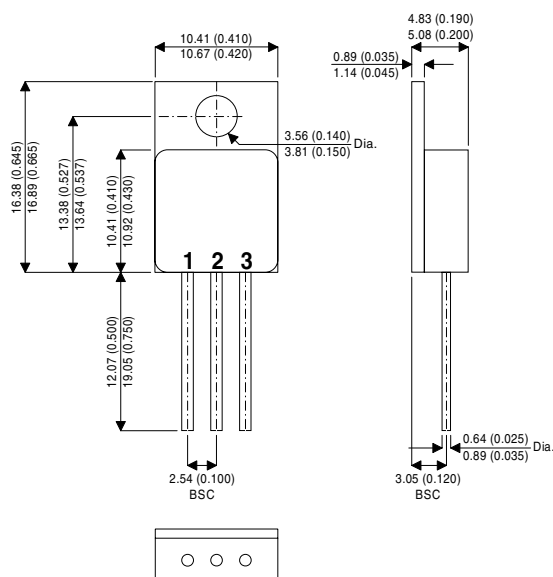


MECHANICAL DATA

Dimensions in mm (inches)


TO-257AA – Metal Package

Pad 1 – Gate Pad 2 – Drain Pad 3 – Source

**N-CHANNEL
POWER MOSFET
FOR HI-REL
APPLICATIONS**

V_{DSS}	100V
$I_{D(cont)}$	18A
$R_{DS(on)}$	0.092Ω

FEATURES

- HERMETICALLY SEALED TO257AA METAL PACKAGE
- SIMPLE DRIVE REQUIREMENTS
- LIGHTWEIGHT
- SCREENING OPTIONS AVAILABLE
- ALL LEADS ISOLATED FROM CASE

ABSOLUTE MAXIMUM RATINGS ($T_{case} = 25^{\circ}C$ unless otherwise stated)

V_{GS}	Gate – Source Voltage	±20V
I_D	Continuous Drain Current @ $T_{case} = 25^{\circ}C$	18A
I_D	Continuous Drain Current @ $T_{case} = 100^{\circ}C$	12A
I_{DM}	Pulsed Drain Current	72A
P_D	Power Dissipation @ $T_{case} = 25^{\circ}C$	50W
	Linear Derating Factor	0.48W/°C
T_J, T_{stg}	Operating and Storage Temperature Range	-55 to 150°C
$R_{\theta JC}$	Thermal Resistance Junction to Case	2.1°C/W max.
$R_{\theta JA}$	Thermal Resistance Junction to Ambient	80°C/W max.

Semelab Plc reserves the right to change test conditions, parameter limits and package dimensions without notice. Information furnished by Semelab is believed to be both accurate and reliable at the time of going to press. However Semelab assumes no responsibility for any errors or omissions discovered in its use. Semelab encourages customers to verify that datasheets are current before placing orders.

ELECTRICAL CHARACTERISTICS ($T_C = 25^\circ\text{C}$ unless otherwise stated)

Parameter	Test Conditions	Min.	Typ.	Max.	Unit	
STATIC ELECTRICAL RATINGS						
BV_{DSS}	Drain – Source Breakdown Voltage	$V_{GS} = 0$	$I_D = 1\text{mA}$	100	V	
ΔBV_{DSS}	Temperature Coefficient of Breakdown Voltage	Reference to 25°C $I_D = 1\text{mA}$		0.1	$\text{V}/^\circ\text{C}$	
$R_{DS(on)}$	Static Drain – Source On–State Resistance	$V_{GS} = 10\text{V}$	$I_D = 12\text{A}$		0.092	
		$V_{GS} = 10\text{V}$	$I_D = 18\text{A}$		0.11	
$V_{GS(th)}$	Gate Threshold Voltage	$V_{DS} = V_{GS}$	$I_D = 250\mu\text{A}$	2	4	V
g_{fs}	Forward Transconductance	$V_{DS} \geq 15\text{V}$	$I_{DS} = 12\text{A}$	9.1	$\text{S}(\bar{\nu})$	
I_{DSS}	Zero Gate Voltage Drain Current	$V_{GS} = 0$	$V_{DS} = 0.8BV_{DSS}$		25	μA
			$T_J = 125^\circ\text{C}$		250	
I_{GSS}	Forward Gate – Source Leakage	$V_{GS} = 20\text{V}$			100	nA
I_{GSS}	Reverse Gate – Source Leakage	$V_{GS} = -20\text{V}$			-100	
DYNAMIC CHARACTERISTICS						
C_{iss}	Input Capacitance	$V_{GS} = 0$		1660	pF	
C_{oss}	Output Capacitance	$V_{DS} = 25\text{V}$		550		
C_{rss}	Reverse Transfer Capacitance	$f = 1\text{MHz}$		120		
Q_g	Total Gate Charge	$V_{GS} = 10\text{V}$	$I_D = 18\text{A}$	30	59	nC
		$V_{DS} = 0.5BV_{DSS}$				
Q_{gs}	Gate – Source Charge	$I_D = 18\text{A}$		2.4	12	nC
Q_{gd}	Gate – Drain (“Miller”) Charge	$V_{DS} = 0.5BV_{DSS}$		12	30.7	
$t_{d(on)}$	Turn–On Delay Time	$V_{DD} = 50\text{V}$ $I_D = 18\text{A}$ $R_G = 9.1\Omega$			21	ns
t_r	Rise Time				145	
$t_{d(off)}$	Turn–Off Delay Time				64	
t_f	Fall Time				105	
SOURCE – DRAIN DIODE CHARACTERISTICS						
I_S	Continuous Source Current				18	A
I_{SM}	Pulse Source Current				73	
V_{SD}	Diode Forward Voltage	$I_S = 18\text{A}$	$T_J = 25^\circ\text{C}$		1.5	V
		$V_{GS} = 0$				
t_{rr}	Reverse Recovery Time	$I_S = 18\text{A}$	$T_J = 25^\circ\text{C}$		400	ns
Q_{rr}	Reverse Recovery Charge	$d_i / d_t \leq 100\text{A}/\mu\text{s}$		$V_{DD} \leq 50\text{V}$	2.4	μC
PACKAGE CHARACTERISTICS						
L_D	Internal Drain Inductance	(from 6mm down drain lead pad to centre of die)		8.7	nH	
L_S	Internal Source Inductance	(from 6mm down source lead to centre of source bond pad)		8.7		

Semelab Plc reserves the right to change test conditions, parameter limits and package dimensions without notice. Information furnished by Semelab is believed to be both accurate and reliable at the time of going to press. However Semelab assumes no responsibility for any errors or omissions discovered in its use. Semelab encourages customers to verify that datasheets are current before placing orders.