

### General Description

The MDI5N40 / MDD5N40 use advanced Magnachip's MOSFET Technology, which provides low on-state resistance, high switching performance and excellent quality.

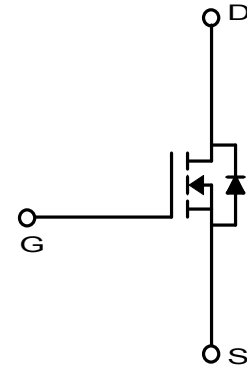
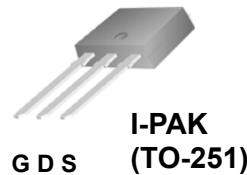
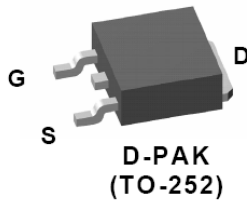
MDI5N40 is suitable device for SMPS, HID and general purpose applications.

### Features

- $V_{DS} = 400V$
  - $I_D = 3.4A$
  - $R_{DS(ON)} \leq 1.6\Omega$
- @ $V_{GS} = 10V$   
@ $V_{GS} = 10V$

### Applications

- Power Supply
- PFC
- Ballast



### Absolute Maximum Ratings (Ta = 25°C)

Characteristics		Symbol	Rating	Unit
Drain-Source Voltage		$V_{DSS}$	400	V
Gate-Source Voltage		$V_{GSS}$	±30	V
Continuous Drain Current	$T_C=25^\circ C$	$I_D$	3.4	A
	$T_C=100^\circ C$		2.15	A
Pulsed Drain Current <sup>(1)</sup>		$I_{DM}$	13.6	A
Power Dissipation	$T_C=25^\circ C$	$P_D$	45	W
	Derate above 25 °C		0.36	W/°C
Peak Diode Recovery $dv/dt^{(3)}$		$Dv/dt$	4.5	V/ns
Repetitive Pulse Avalanche Energy <sup>(4)</sup>		$E_{AR}$	4.5	mJ
Single Pulse Avalanche Energy <sup>(4)</sup>		$E_{AS}$	170	mJ
Junction and Storage Temperature Range		$T_J, T_{stg}$	-55~150	°C

### Thermal Characteristics

Characteristics	Symbol	Rating	Unit
Thermal Resistance, Junction-to-Ambient <sup>(1)</sup>	$R_{\theta JA}$	110	°C/W
Thermal Resistance, Junction-to-Case <sup>(1)</sup>	$R_{\theta JC}$	2.75	

## Ordering Information

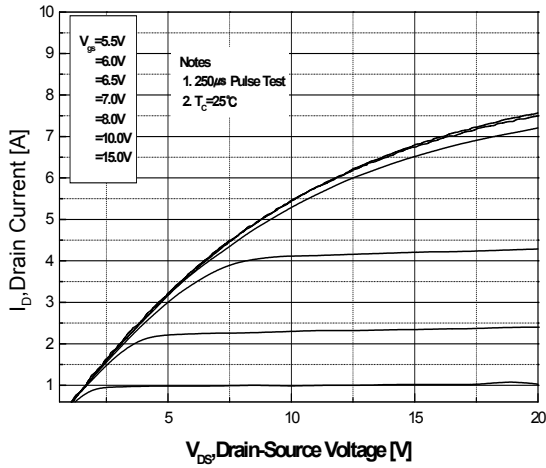
Part Number	Temp. Range	Package	Packing	RoHS Status
MDI5N40TH	-55~150°C	I-Pak	Tube	Halogen Free
MDD5N40RH	-55~150°C	D-Pak	Reel	Halogen Free

## Electrical Characteristics (Ta =25°C)

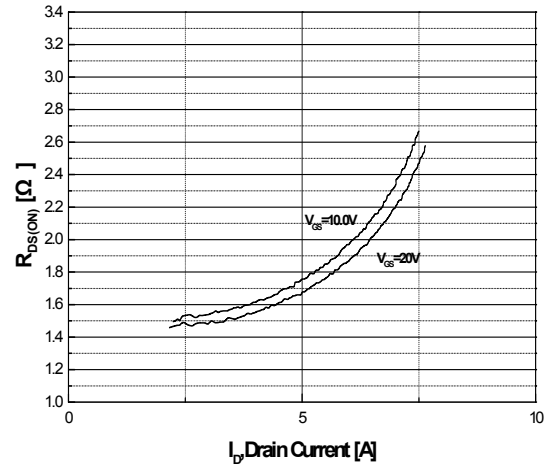
Characteristics	Symbol	Test Condition	Min	Typ	Max	Unit
<b>Static Characteristics</b>						
Drain-Source Breakdown Voltage	$BV_{DSS}$	$I_D = 250\mu A, V_{GS} = 0V$	400	-	-	V
Gate Threshold Voltage	$V_{GS(th)}$	$V_{DS} = V_{GS}, I_D = 250\mu A$	3.0	-	5.0	
Drain Cut-Off Current	$I_{DSS}$	$V_{DS} = 400V, V_{GS} = 0V$	-	-	1	$\mu A$
Gate Leakage Current	$I_{GSS}$	$V_{GS} = \pm 30V, V_{DS} = 0V$	-	-	100	nA
Drain-Source ON Resistance	$R_{DS(ON)}$	$V_{GS} = 10V, I_D = 1.7A$		1.2	1.6	$\Omega$
Forward Transconductance	$g_{fs}$	$V_{DS} = 30V, I_D = 1.7A$	-	2.0	-	S
<b>Dynamic Characteristics</b>						
Total Gate Charge	$Q_g$	$V_{DS} = 320V, I_D = 3.4A, V_{GS} = 10V^{(3)}$	-	9		nC
Gate-Source Charge	$Q_{gs}$		-	2.5		
Gate-Drain Charge	$Q_{gd}$		-	4		
Input Capacitance	$C_{iss}$	$V_{DS} = 25V, V_{GS} = 0V, f = 1.0MHz$	-	290		pF
Reverse Transfer Capacitance	$C_{rss}$		-	3		
Output Capacitance	$C_{oss}$		-	46		
Turn-On Delay Time	$t_{d(on)}$	$V_{GS} = 10V, V_{DS} = 200V, I_D = 3.4A, R_G = 25\Omega^{(3)}$	-	12		ns
Rise Time	$t_r$		-	25		
Turn-Off Delay Time	$t_{d(off)}$		-	20		
Fall Time	$t_f$		-	30		
<b>Drain-Source Body Diode Characteristics</b>						
Maximum Continuous Drain to Source Diode Forward Current	$I_S$		-	3.4	-	A
Source-Drain Diode Forward Voltage	$V_{SD}$	$I_S = 3.4A, V_{GS} = 0V$	-		1.4	V
Body Diode Reverse Recovery Time	$t_{rr}$	$I_F = 3.4A, di/dt = 100A/\mu s^{(3)}$	-	200		ns
Body Diode Reverse Recovery Charge	$Q_{rr}$		-	1.0		$\mu C$

Note :

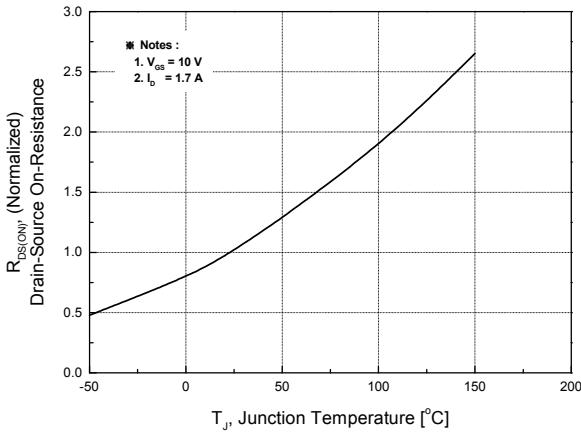
- Pulse width is based on  $R_{\theta JC}$  &  $R_{\theta JA}$  and the maximum allowed junction temperature of 150°C.
- Pulse test: pulse width  $\leq 300\mu s$ , duty cycle  $\leq 2\%$ , pulse width limited by junction temperature  $T_J(MAX)=150^\circ C$ .
- $I_{SD} \leq 3.4A$ ,  $di/dt \leq 200A/\mu s$ ,  $V_{DD}=50V$ ,  $R_g = 25\Omega$ , Starting  $T_J=25^\circ C$
- $L = 26.0mH$ ,  $I_{AS}=3.4A$ ,  $V_{DD}=50V$ ,  $R_g = 25\Omega$ , Starting  $T_J=25^\circ C$



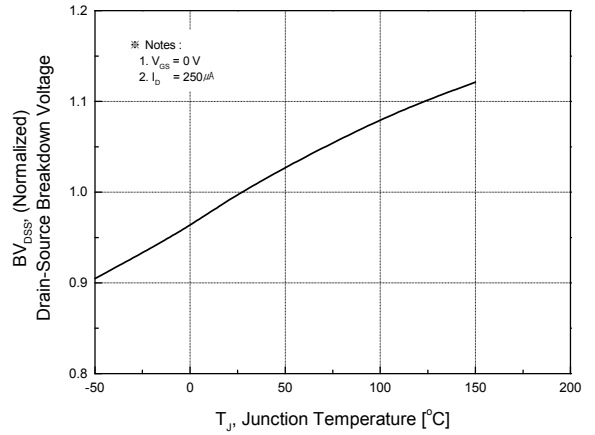
**Fig.1 On-Region Characteristics**



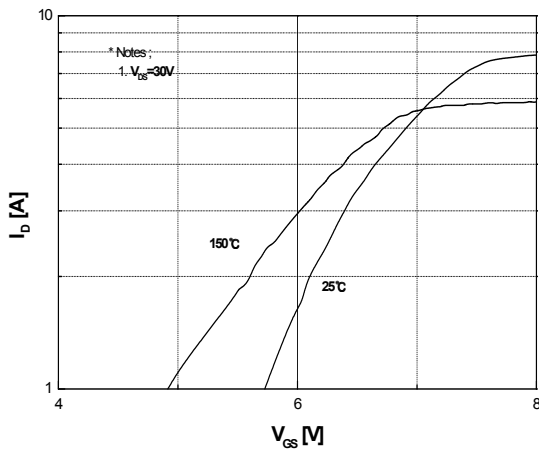
**Fig.2 On-Resistance Variation with Drain Current and Gate Voltage**



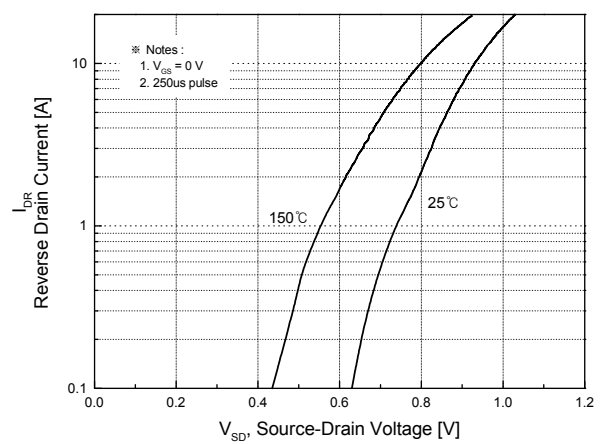
**Fig.3 On-Resistance Variation with Temperature**



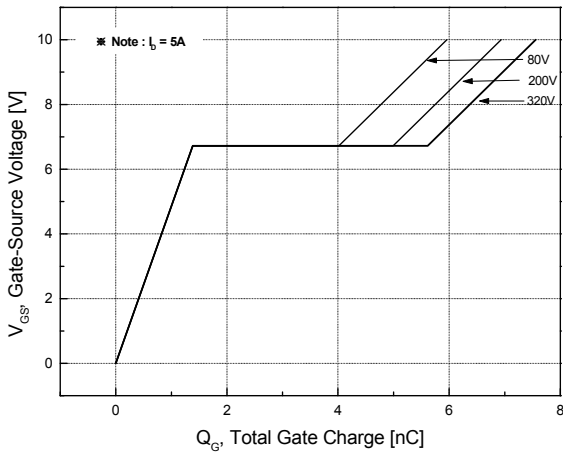
**Fig.4 Breakdown Voltage Variation vs. Temperature**



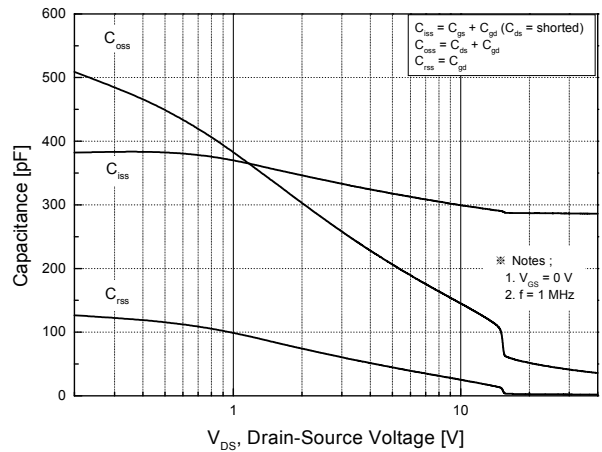
**Fig.5 Transfer Characteristics**



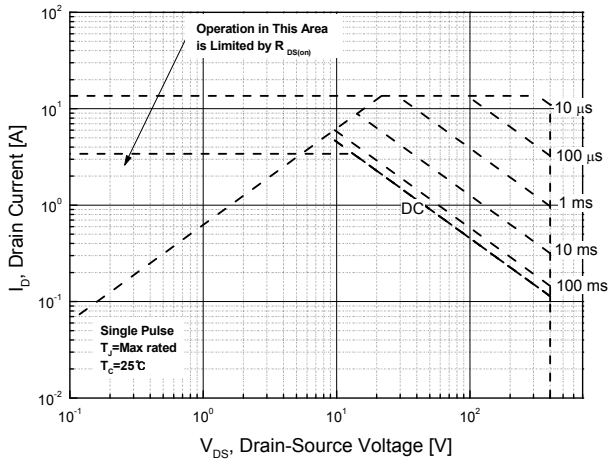
**Fig.6 Body Diode Forward Voltage Variation with Source Current and Temperature**



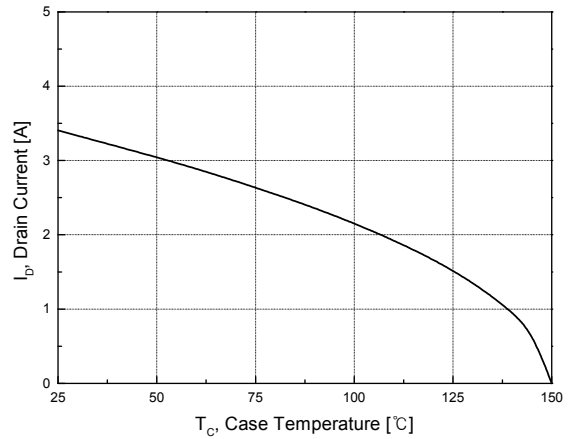
**Fig.7 Gate Charge Characteristics**



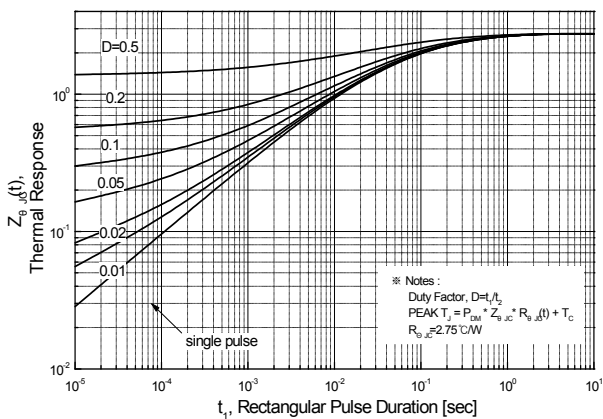
**Fig.8 Capacitance Characteristics**



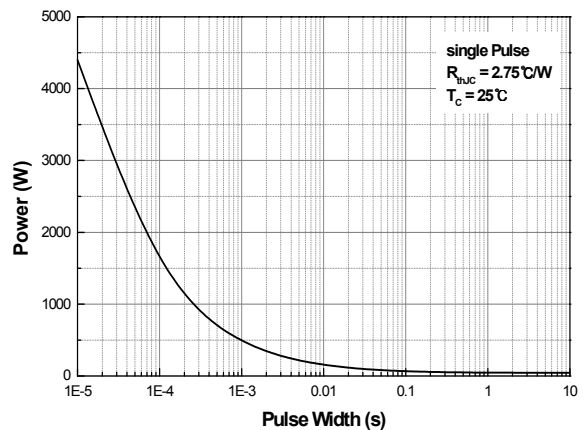
**Fig.9 Maximum Safe Operating Area**



**Fig.10 Maximum Drain Current vs. Case Temperature**



**Fig.11 Transient Thermal Response Curve**

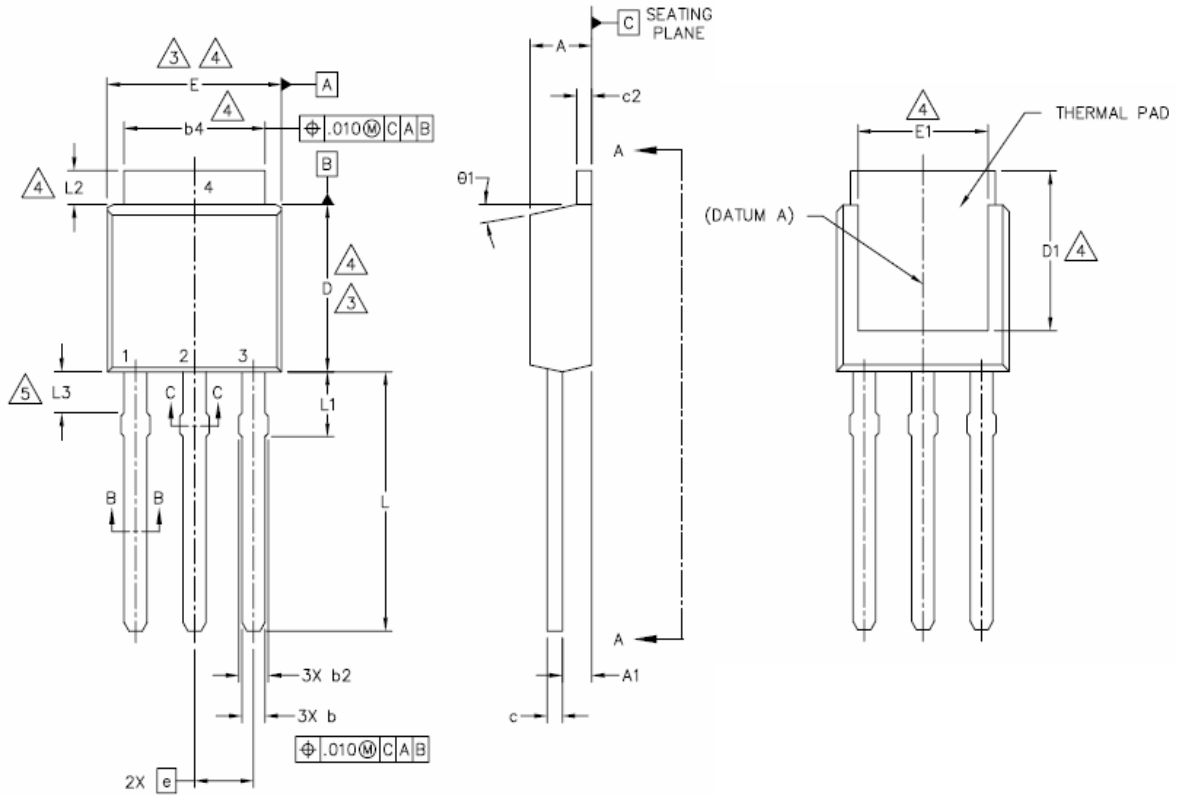


**Fig.12 Single Pulse Maximum Power Dissipation**

**Physical Dimension**

**TO-251 (IPAK)**

Dimensions are in millimeters, unless otherwise specified

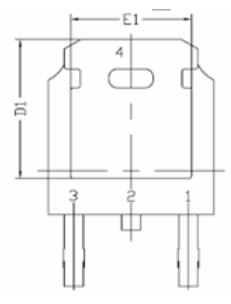
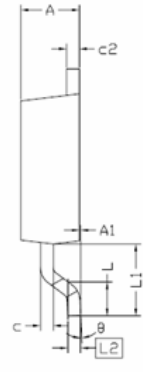
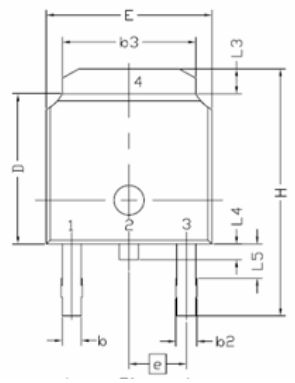


SYMBOL	MIN	NOM	MAX
A	2.18	-	2.39
A1	0.89	-	1.14
b	0.64	-	0.89
b1	0.64	0.71	0.79
b2	0.76	-	1.14
b4	4.95	-	5.46
c	0.46	-	0.61
c2	0.46	-	0.89
D	5.97	6.10	6.22
D1	4.75	-	
E	6.35	-	6.73
E1	4.32	-	0.00
e	2.30 BSC		
L	8.89	-	9.65
L1	1.80	-	2.29
L2	0.70	-	1.27
L3	1.14	-	1.52

**Physical Dimension**

**D-PAK, 3L**


Dimensions are in millimeters, unless otherwise specified



Symbol	Min.	Nom.	Max.
E	6.35	-	6.73
L	1.40	1.52	1.78
L1	2.74 REF		
L2	0.508 BCS		
L3	0.89	-	1.27
L4	-	-	1.02
L5	1.14	-	1.52
D	5.97	6.10	6.22
H	9.40	-	10.41
b	0.64	-	0.89
b2	0.76	-	1.14
b3	4.95	-	5.46
e	2.286 BSC		
A	2.18	-	2.39
A1	-	-	0.13
c	0.46	-	0.61
c2	0.46	-	0.89
D1	5.21	-	-
E1	4.32	-	-
ø	0.00	-	10.00

**DISCLAIMER:**

The Products are not designed for use in hostile environments, including, without limitation, aircraft, nuclear power generation, medical appliances, and devices or systems in which malfunction of any Product can reasonably be expected to result in a personal injury. Seller's customers using or selling Seller's products for use in such applications do so at their own risk and agree to fully defend and indemnify Seller.

MagnaChip reserves the right to change the specifications and circuitry without notice at any time. MagnaChip does not consider responsibility for use of any circuitry other than circuitry entirely included in a MagnaChip product.  is a registered trademark of MagnaChip Semiconductor Ltd.