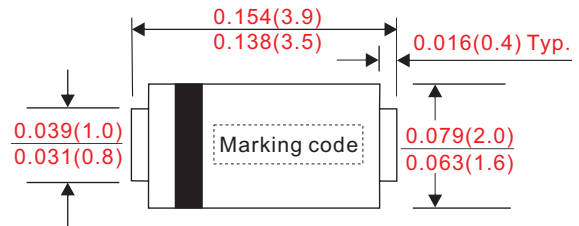


### ■ Features

- Low profile surface mounted application in order to optimize board space.
- High current capability.
- High surge capability.
- Ultrafast recovery time for high efficiency.
- Glass passivated chip junction.
- Suffix "G" indicates Halogen free parts, ex. BUGP4001WG-S.
- Lead-free parts meet environmental standards of MIL-STD-19500 /228

### ■ Outline

SOD-123S



Dimensions in inches and (millimeters)

### ■ Mechanical data

- Epoxy: UL94-V0 rated flame retardant
- Case : Molded plastic, SOD-123S
- Terminals : Solder plated, solderable per MIL-STD-750, Method 2026
- Polarity : Indicated by cathode band
- Weight : Approximated 0.018 gram

### ■ Maximum ratings and electrical characteristics

Rating at 25°C ambient temperature unless otherwise specified. Single phase, half wave, 60Hz, resistive or inductive load. For capacitive load, derate current by 20%.

Parameter	Conditions	Symbol	MIN.	TYP.	MAX.	UNIT
Forward rectified current		$I_O$			1.0	A
Forward surge current	8.3ms single half sine-wave superimposed on rate load (JEDEC method)	$I_{FSM}$			30	A
Reverse current	$V_R = V_{RRM}$ $T_A = 25^\circ\text{C}$	$I_R$			5.0	uA
	$V_R = V_{RRM}$ $T_A = 125^\circ\text{C}$				100	
Storage temperature		$T_{STG}$	-55		+150	°C

Symbol	Marking code	Max. repetitive peak reverse voltage $V_{RRM}$ (V)	Max. RMS voltage $V_{RMS}$ (V)	Max. DC blocking voltage $V_R$ (V)	Max. forward voltage @1A, $T_A = 25^\circ\text{C}$ $V_F$ (V)	Max. reverse recovery time(1) $T_{rr}$ (ns)	Operating temperature $T_J$ (°C)
BUGP4001W-S	H1	50	35	50	1.0	50	-55 ~ +150
BUGP4002W-S	H2	100	70	100			
BUGP4003W-S	H3	200	140	200			
BUGP4004W-S	H4	400	280	400	1.40	75	
BUGP4005W-S	H5	600	420	600			
BUGP4006W-S	H6	800	560	800			
BUGP4007W-S	H7	1000	700	1000			

Note : 1.  $I_F = 0.5A$ ,  $I_R = 1.0A$ ,  $I_{RR} = 0.25A$

Rating and characteristic curves

FIG.1-TYPICAL FORWARD CHARACTERISTICS

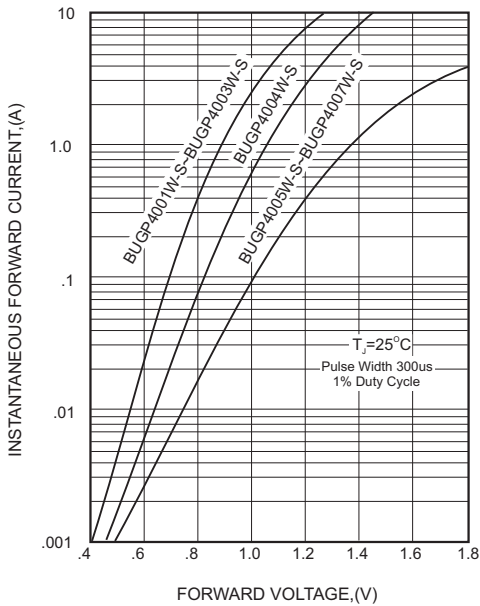


FIG.2-TYPICAL FORWARD CURRENT DERATING CURVE

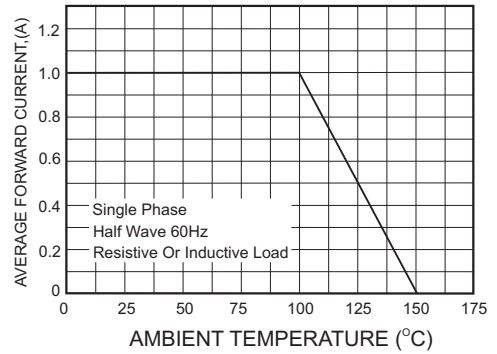
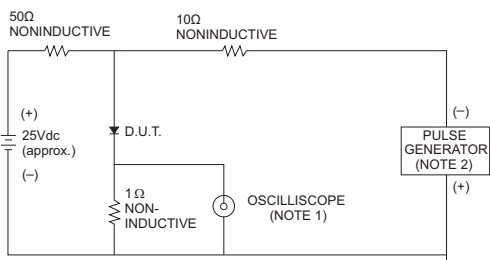


FIG.3- TEST CIRCUIT DIAGRAM AND REVERSE RECOVERY TIME CHARACTERISTICS



NOTES: 1. Rise Time= 7ns max., Input Impedance= 1 megohm.22pF.  
2. Rise Time= 10ns max., Source Impedance= 50 ohms.

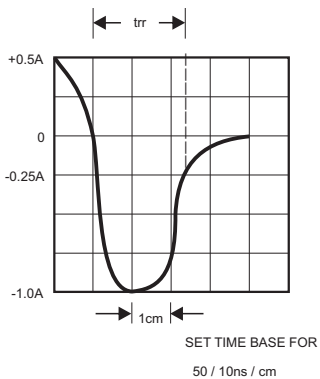


FIG.4-MAXIMUM NON-REPETITIVE FORWARD SURGE CURRENT

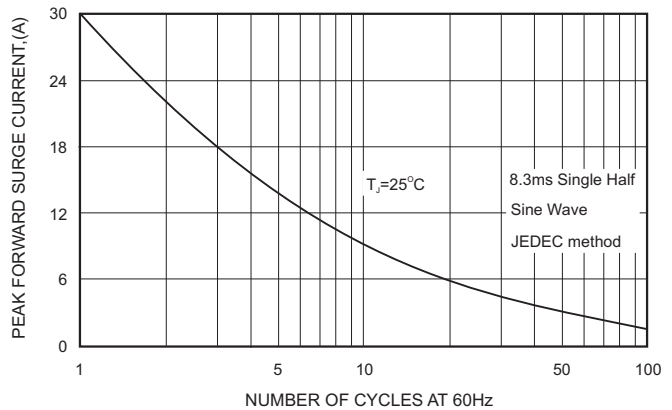
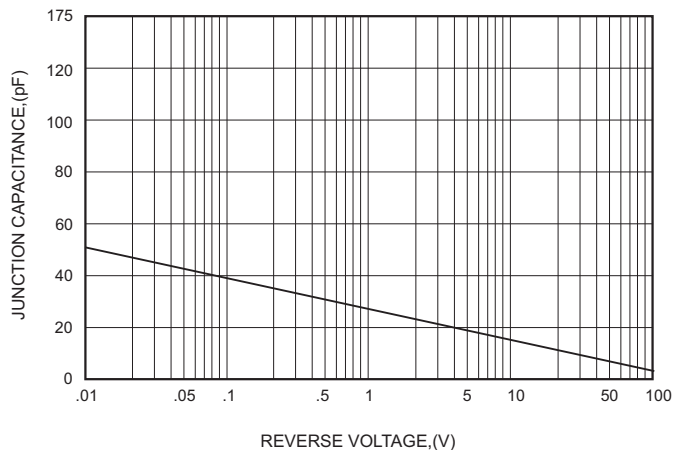
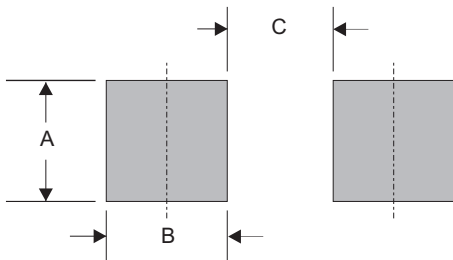


FIG.5-TYPICAL JUNCTION CAPACITANCE



■ SOD-123S foot print



A	B	C
0.044 (1.10)	0.039 (1.00)	0.079 (2.00)

Dimensions in inches and (millimeters)

- CITC reserves the right to make changes to this document and its products and specifications at any time without notice.
- Customers should obtain and confirm the latest product information and specifications before final design, purchase or use.
- CITC makes no warranty, representation or guarantee regarding the suitability of its products for any particular purpose, nor does CITC assume any liability for application assistance or customer product design.
- CITC does not warrant or accept any liability with products which are purchased or used for any unintended or unauthorized application.
- No license is granted by implication or otherwise under any intellectual property rights of CITC.
- CITC products are not authorized for use as critical components in life support devices or systems without express written approval of CITC.